

UNIVERSITY OF ILLINOIS

**STUDENT HOUSING
HANDBOOK**

1943 - 1944

Issued by the Division of Student Housing

UNIVERSITY OF ILLINOIS BULLETIN

UNIVERSITY OF ILLINOIS

BOARD OF TRUSTEES

Members ex Officio

DWIGHT H. GREEN, Governor of Illinois.....Springfield
VERNON L. NICKELL, Superintendent of Public Instruction.....Springfield

Elected Members

(Term 1939-1945)

FRANK A. JENSEN.....LaSalle
ORVILLE M. KARRAKER.....405 Centennial Building, Springfield
DR. KARL A. MEYER.....Cook County Hospital, Chicago

(Term 1941-1947)

JOHN R. FORNOF.....122 S. Bloomington Street, Streator
MRS. HELEN M. GRIGSBY.....Pittsfield
PARK LIVINGSTON.....20 N. Wacker Drive, Chicago

(Term 1943-1949)

CHESTER R. DAVIS.....69 W. Washington Street, Chicago
DR. MARTIN G. LUKE.....1448 Lake Shore Drive, Chicago
FRANK H. MCKELVEY.....1023 Woodland Avenue, Springfield

Officers of the Board

PARK LIVINGSTON, President.....Chicago
HARRISON E. CUNNINGHAM, Secretary.....Urbana
IRVIN L. PORTER, Treasurer.....First National Bank, Chicago
LLOYD MOREY, Comptroller.....Urbana

OFFICERS OF ADMINISTRATION

ARTHUR CUTTS WILLARD, B.S., D.Eng., LL.D., *President of the University*
ALBERT JAMES HARNO, B.S., LL.B., LL.D., Litt.D., *Provost*
ROBERT DANIEL CARMICHAEL, Ph.D., *Dean of the Graduate School*
FRED HAROLD TURNER, Ph.D., *Dean of Men*
MARIA LEONARD, A.M., Litt.D., *Dean of Women*
GEORGE PHILIP TUTTLE, B.S., *Registrar*

UNIVERSITY OF ILLINOIS BULLETIN Volume 40, Number 42 JUNE 8, 1943
Published weekly by the University of Illinois. Entered as second-class matter at the post office at Urbana, Illinois, under the Act of August 24, 1912. Office of Publication, 358 Administration Building, Urbana, Illinois. Acceptance for mailing at the special rate of postage provided for in Section 1103, Act of October 3, 1917, authorized July 31, 1918.



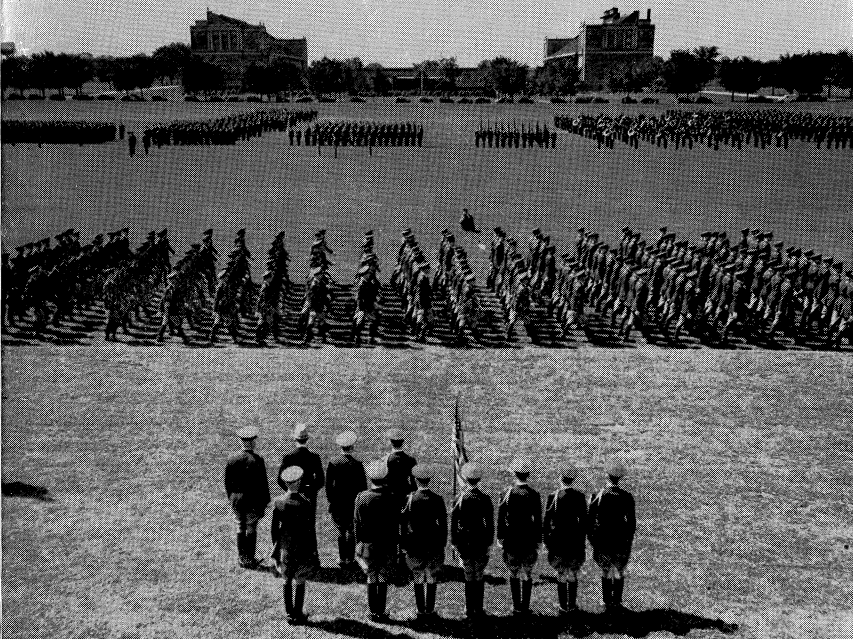
Student housing has long been recognized as an important factor in maintaining high standards of scholastic attainment. In 1939 the Division of Student Housing was created at the University of Illinois for the purpose of improving standards of health, safety, study conditions, and social facilities in student homes. The University is always interested in the welfare of its students and will continue to protect the best interests of the student body and the University community during wartime, as during peacetime, with every resource at its command.

A.C. Willard

President

CONTENTS

	PAGE
President's Message	1
The University's Part in the War Effort	3
Introduction	4
Types of Residences for Women Students	5
University Women's Residence Halls	5
Women's Cooperative Type Houses	6
Privately Owned Residence Halls for Women	6
Privately Operated Student Homes for Women	7
Sororities	8
Types of Residences for Men Students	10
Residence Halls for Men Students	10
Men's Cooperative Units	10
Privately Operated Student Homes for Men	11
Map of Campus	12
Fraternities	14
Choosing a Student Home	15
Housing Regulations	17
Additional Regulations Governing Women Students	20
University Student Housing Policies	22
Standards for Approved Student Homes	22
University Calendar	Inside back cover



In Review

The University's Part in the War Effort

The University of Illinois has pledged its resources in the fight to maintain the United States as an independent, democratic nation. A large and competent staff, a well-equipped plant, and the accumulative experience of seventy-five years in higher education and research have been placed at the disposal of the state and federal governments. Accelerated programs of teaching and research enable the student to complete requirements for graduation in three, rather than four, years.

The United States Navy has over 1500 trainees in its Signal and Diesel schools which are maintained at the University of Illinois. These men are housed and fed, as well as instructed, in University buildings. Early in 1943 the University of Illinois was selected as a center for Army and Navy Engineering Specialists' Training. As this program is developed, it is anticipated that many more members of the armed services will be sent here for instruction.

All University-owned residence halls for both men and women are now under contract to the armed forces. It is probable that many privately owned units will be utilized in lodging additional groups of Army and Navy trainees. Despite these new demands for housing facilities, an ample supply of attractive accommodations for both men and women will be maintained under University standards. The first responsibility of the University is to the war effort, but this obligation can be discharged in full only when adequate training for effective citizenship is continued for those men and women who attend the University as regularly enrolled students.

INTRODUCTION

After receiving your permit to enter the University, your first concern is to locate a place to live. The cost of room and board is the largest item in your University budget and represents an investment which can pay large returns in efficiency as a student and a member of the University community. You will probably want to compare several types of residences before making a final selection, and it is advisable that you inspect the rooms personally rather than make reservations by mail. It is the purpose of this booklet to give general information about student housing, and to familiarize you with the types of residences available.

The University of Illinois campus in Urbana-Champaign is one of the world's largest student communities. It lies between and adjoining the two cities which have a total population of 37,000 persons. Approximately two-thirds of the University students live in Champaign, the remainder in Urbana and nearby communities. In both Champaign and Urbana, the large majority of students reside in privately operated student homes, fraternities or sororities, and residence halls. Housing units vary in capacity from one to several hundred.

As a student you cannot do your best work under unsatisfactory housing conditions. The Division of Student Housing was established by the University Board of Trustees to supervise standards of health, safety and comfort in residences for students. Approved student homes are supervised by a person recognized by the University, and responsible to it for making effective housing regulations and standards of the University and of local and state agencies.

All unmarried undergraduates, both men and women, are required to live in University approved houses unless they are living with relatives or have special permission from the Division of Student Housing to reside elsewhere.

Room rental agreements for the semester period are provided by the University in the interest of uniformity and sound business procedure, and are optional with both student tenants and housemothers. If an agreement is signed by both student and housemother, the Division of Student Housing will enforce the contract, and will assist in the settlement of damage claims. Fraternities and sororities, as a rule, do not use specific agreements, although residence in these houses implies the obligation to meet house bills and other charges.

University rules provide that students should become acquainted with and observe University regulations governing them in their place of residence. University officers and housemothers are responsible for requiring observance of these regulations.

Housing information may be secured from the Division of Student Housing, 102 Illini Hall, Urbana, Illinois. Men and women staff members are available for personal interviews from 8:00 A.M. to 5:00 P.M. These offices are also open on Saturday afternoons and Sundays during the pre-registration period.



Waiting
for
Lunch

Types of Residences for Women Students

Five types of college homes are available for women students: University residence halls, cooperative type houses, privately-operated residence halls, approved student homes, and sororities. All of these student residences are supervised by approved chaperons. Undergraduate women students, not residing with parent, guardian, or near relative, are required to live in these houses unless they have permission from the Division of Student Housing to reside elsewhere.

University Residence Halls are now under contract to the armed forces. Under ordinary circumstances they offer room and board for three hundred undergraduate women at rates from \$350 to \$400 an occupant for the academic year. They are located near the campus and afford cultured, comfortable college homes for women students.



Study Room



A Co-op
Kitchen

Women's Cooperative Type Houses normally accommodate approximately 150 women in units of from fifteen to forty residents. The average price for this type of housing is \$28 a month for both room and board. Each girl assumes her share of the work necessary to maintain the household, the time for which averages about one hour per day. Membership is open to undergraduate women students on the basis of need, scholastic attainment, and superior qualities of character and personality. Applications for membership in some houses of this type may be secured in the office of the Dean of Women prior to July first. In the case of the other units, applications are presented directly to the individual house committees. The demand for housing of this kind ordinarily exceeds the supply available; it is, therefore, advisable to secure such accommodations as early as possible.

Privately Owned Residence Halls for Women are operated by their own boards of directors who employ experienced, cultured chaperons to supervise



Fireside
Comfort

the halls and maintain University standards in these units. There are two halls of this kind which are open to undergraduate women; one accommodates 67 persons, the other 45. Prices for room and board range from \$330 to \$404 for the academic year. Applications for residence should be filed at the offices of the respective units.

Privately Operated Student Homes are maintained by the Urbana-Champaign townspeople and are approved under regulations and standards established by the University and enforced by the Dean of Women and the Division of Student Housing. They offer room and board, room only, and room accommodations with light housekeeping facilities. Over 1000 undergraduate women live in residences of this kind which range in student capacity from five to over forty.

Some of the larger privately owned student homes provide social programs and all women students are eligible to participate in the activity programs fostered by the University.

Roommates
Study



Page six

After the
Ten o'clock
Exam





**Morning
Mail**



**Relaxation
in the
Lounge**

Rental agreements cover a semester period. Prices for room and board are usually quoted by the month, and range from \$45 to \$50. Those houses offering room only or room with light housekeeping facilities have monthly rates which vary between \$14 and \$18 per month.

These prices do not include any laundry other than bedding, but most houses will allow students to do their personal laundry.

Complete information concerning the facilities afforded by the many privately operated student homes for women is available at the office of the Division of Student Housing, where up-to-date lists of available quarters are maintained throughout the renting season.

Sororities on the University of Illinois' campus number 22, and they house over 750 undergraduate women, in groups with an average membership of about 35 students. Women interested in sorority affiliations who have no friends in Illinois chapters, may secure information concerning invitations

to fall rushing from the Panhellenic Adviser, 100 Woman's Building, Urbana, Illinois.

Rushing includes the entertainment of prospective members at teas, breakfasts, luncheons, and dinners. During the rushing period, rushees make *temporary* room arrangements, and must live in regularly approved homes for undergraduate women. Lists of these quarters may be obtained from the Division of Student Housing or at 100 Woman's Building. All members and pledges of sororities live in chapter houses under the direction of a mature chaperon.

House bills average fifty-two dollars monthly, payable in advance. Although more expensive than other housing units, the sorority offers excellent opportunities for the development of responsibility, leadership and personality. Since one of the main functions of a sorority is to maintain high academic standards, new initiates and pledges are advised as to the best methods of study and are encouraged to fulfill both social and scholastic requirements.

**Study and
Conversation**



Page eight



Study Hours



Almost Time for That Three o'clock

Types of Residences for Men Students

Homes for University men include the following classifications: residence halls, cooperative houses, fraternities, and privately operated student homes. All unmarried undergraduate men not residing with parents or relatives are required to live in University approved quarters unless they have special permission to reside elsewhere.

Residence Halls for Men, operated by the University, are now reserved for the use of Army and Navy trainees. In normal times they offer facilities for over 450 students. One hall has room accommodations only, at prices which range from \$108 to \$153 for the academic year. All other room spaces are rented with board and vary in price from \$375 to \$435 for the academic year. There are three privately owned residence halls for men which accommodate a total of almost 500 students. Room and board accommodations are available in one hall at approximately \$450 for the school year. Prices in units offering room only vary from \$90 to \$150 for the school year. Applications for residence in privately operated residence halls should be made directly to the managers of the halls.

Cooperative Houses have facilities for 250 men in groups of from 15 to 40. In these units students work approximately one hour per day, and pay slightly over \$25 per month for room and board. Men in doubt concerning their ability to stay in school for at least a year should not reserve a space in these units since they are closely budgeted and the loss of a member might seriously handicap the operation of the house. Members are selected on the basis of need, scholarship, character and personality. Housing organizations of this type offer satisfactory facilities at minimum cost and afford excellent opportunities for the development of individual character and responsibility. Further information concerning cooperative housing may be secured from the Division of Student Housing.

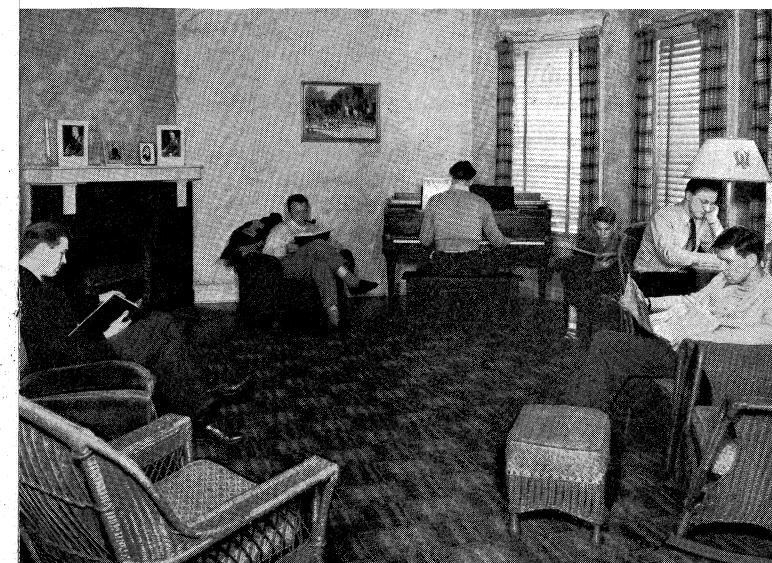


Boning Up

Privately Operated Student Homes for Men are approved under University housing standards and display the sign—

Approved Rooms
for Men
University of Illinois

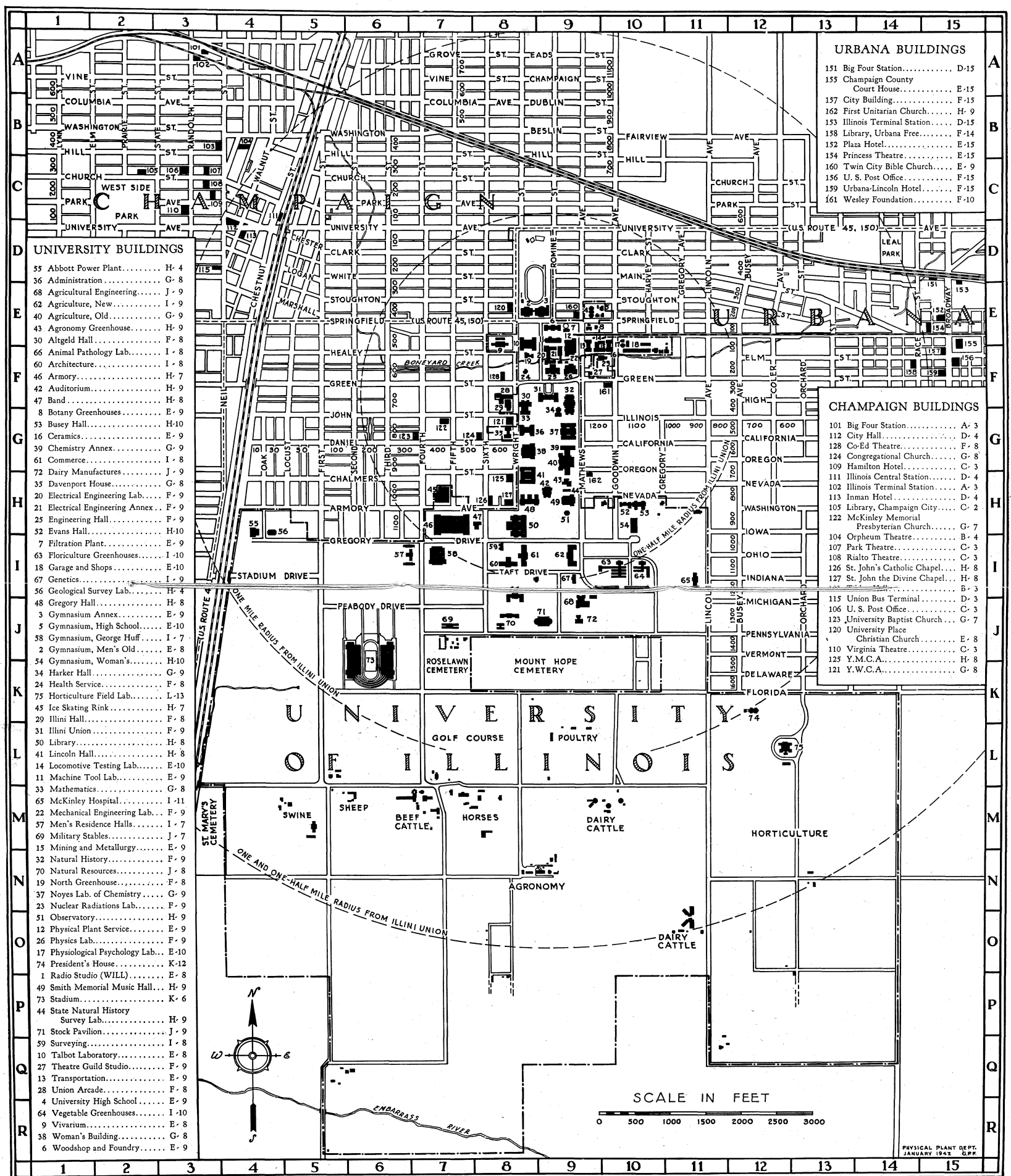
They range in capacity from 2 to 40 and provide housing for over 2500 students. Some of these houses serve meals, and a few have light housekeeping accommodations. Room rentals range from \$100 to \$175 for the school year of approximately nine months, depending on the number of occupants in the room, location, and general attractiveness. Room and board are available at prices from \$350 to \$450 for the school year. All privately operated student homes are supervised by housemothers who are approved by the University and are responsible for maintenance of University regulations in their respective homes.



Relaxation

STUDENT HOUSING AREA

University of Illinois



Wright Street, running north and south, divides the twin cities. On the west side, Champaign, the blocks start with six hundred and grow progressively smaller with each block west from the campus. On the east side, Urbana, the blocks start with twelve hundred and grow progressively smaller with each block east from the campus.



Music
in the
Lounge

National Fraternities house approximately 2000 men in groups of 25 to 50. Both meals and lodgings are provided in each of the 55 fraternity chapter houses. Fraternity house bills average approximately \$55 a month which ordinarily includes chapter dues and an entertainment fee as well as the charge for room and board. Some houses are supervised by resident housemothers and others by resident tutorial advisers, each group is responsible to University officials and to its Alumni Board for proper management of its organization. Membership in fraternities is by invitation only. "Rushing" appointments may be made during the preregistration period when fraternities select new members. New men interested in membership should communicate with the Dean of Men for rushing dates and other information if they have no other fraternity contacts at Illinois. During the fraternity rushing period rushees engage *temporary* quarters and should clearly stipulate the terms of their residence. A list of these accommodations is maintained in the office of the Dean of Men and the Division of Student Housing.



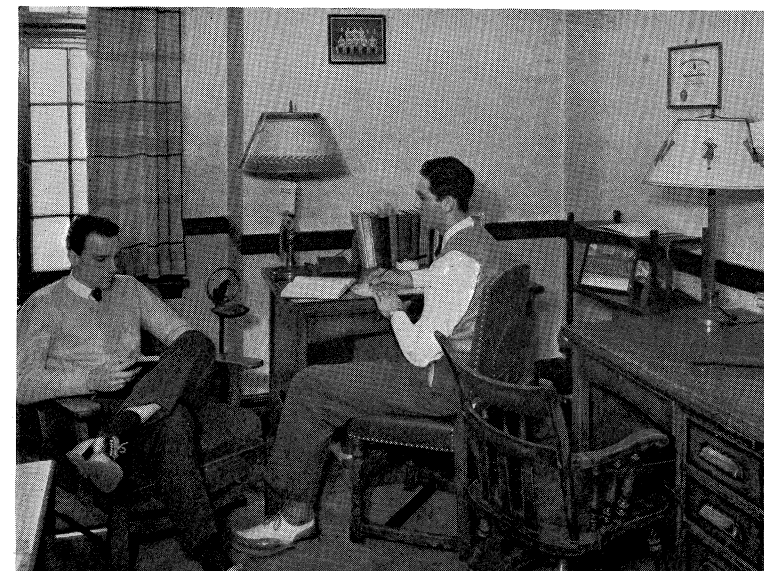
A Co-op
Study Room

Choosing a Student Home

After deciding on the type of residence which you prefer, you should then select the one from the group which seems best to fit your individual needs. Such points as location, furnishings, comfort, housekeeping, and cost should be considered before a room is contracted for. Any adjustments in the room or the rental arrangement are much better made before than after you have become a tenant.

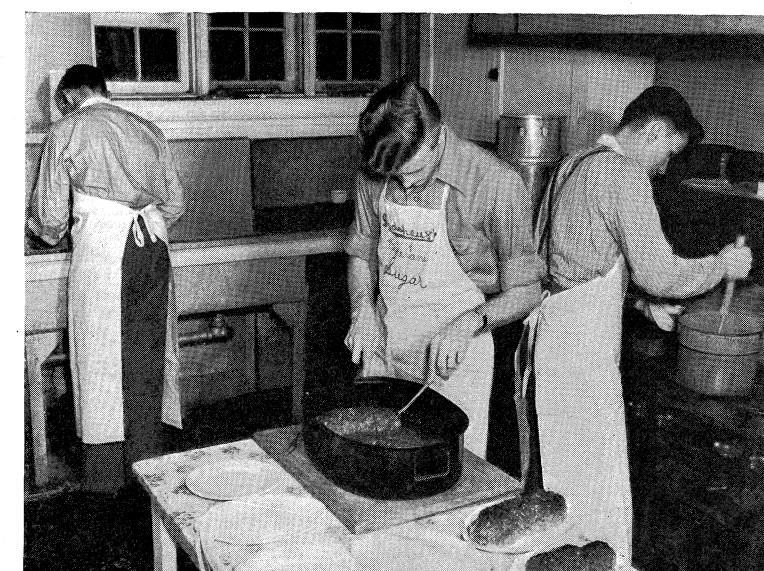
Copies of a semester rental agreement, use of which is optional with both housemother and student, are provided by the University. Their use contributes to a more satisfactory business relationship. Do not sign any rental agreement which you do not understand. If you have questions concerning a contract involving room rental call the Division of Student Housing at 6-2594. These agreements are binding once they are executed.

Academic
Collaboration



Page fourteen

Kitchen Duty





Residence Hall
Lounge

Call at the Housing Division for late listings—Fraternities and sororities will send you full information concerning "rushing." If you have no personal contacts with the members of these houses, address the Dean of Men or Dean of Women for details of the "rushing" program.

It is always wise to call at the offices of the Housing Division before beginning your survey of housing units. Up-to-date room lists are maintained throughout the renting season and particular attention is given to the personal problems of the individual student in finding a University home.

Choose your campus home carefully and thoughtfully after a personal inspection and with regard to your comfort and convenience. Do not make any commitments or create any contractual obligation until you are completely satisfied with the arrangements and able to carry out your responsibilities. If you rent temporary quarters be sure to specify the terms of your rental arrangement.

Residence Hall
Study Room



Housing Regulations for Undergraduate Students

As University students you are held responsible for observance of certain specific regulations and customs governing various student activities and relationships. In the supervision of her home, your housemother has agreed to further your best interests and those of the University. Work with her for the common good of your group and the University.

Chapter X of the "Code on Student Affairs" clearly states the housing regulations, and the following excerpts are taken from that booklet.

Types of Housing—Non-resident undergraduate students must reside in residence halls, cooperative houses, group houses, fraternity or sorority houses, and in approved privately operated student homes, unless they have permission from the University to reside elsewhere.

Supervision and Chaperonage—Non-resident unmarried undergraduate students may not occupy living quarters in which there does not reside some mature person in general charge approved by the University.

Duties of a Housemother—The housemother is expected to supervise the house properly, to maintain a comfortable temperature, to clean rooms and bath, to provide clean linen, to exercise due care in admitting strangers, and otherwise to look after the general well-being of the occupants of her house.

Use of Utilities—Care should be exercised by student tenants to turn off lights, gas, and water when they are not in use.

Refreshments in the Kitchen





The Broadwalk

Room Contracts—The contracts for rooms in approved student homes shall be provided by the University and, if properly executed, enforced under conditions prescribed by the Division of Student Housing. If any difficulties arise, they shall be duly acted on by responsible University officers to promote the best interests of all concerned.

Guests—The student tenant shall not lodge a guest in his or her room at any time without the knowledge and consent of the housemother. Men students may not have women guests in their houses without approved chaperonage.

Quiet Hours—Quiet hours shall be observed from 8:00 to 12:00 and from 1:00 to 4:00 during the day, and shall be maintained after 7:30 each evening except Friday and Saturday.

Liquor and Gambling Forbidden—Intoxicating liquor in any form and gambling shall not be permitted in or about student residences at any time.

Refuse Disposal—All refuse must be properly disposed of by the occupant in metal receptacles and depositories provided by the housemother for such purpose.

Protection—It shall be the joint duty of students and housemother to agree on measures for protection from fire, theft, etc., and the type and placing of locks to be provided or used.

Damage Claims—Student tenants shall be held liable for damage done to their room or furnishings, other than that due to ordinary wear. They may exercise a choice of satisfactorily repairing the damaged article or replacing it. Complaints for excessive damage may be referred to the Division of Student Housing.

Recognition of Fraternities and Men's Houses—University recognition of national or local social or professional fraternities, or men's houses, will be granted by the Committee on Student Affairs on compliance with such conditions as the Committee may prescribe. Each fraternity and organized men's house must keep on file with the Dean of Men a complete and up-to-date list of their officers, members, and pledges. Each sorority and organized women's house shall also keep on file with the Dean of Women a correct and complete list of all actives, pledge members, and current list of officers.

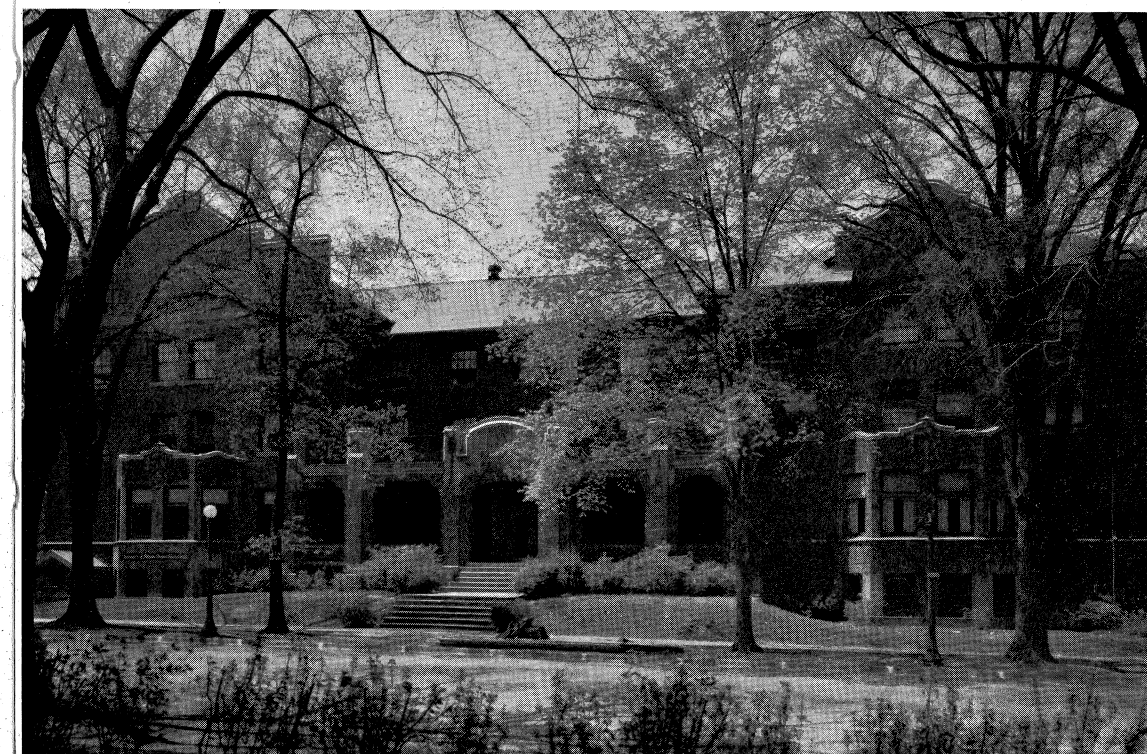
Non-Members in Sororities and Fraternities—No fraternity, sorority, local club, or other student organization may permit any person not a regularly registered student or otherwise regularly connected with the organization, to reside at its house at any time without permission of the Committee on Student Affairs.

Women Guests in Fraternities and Men's Houses—Women may be guests in these houses on Wednesday from 5:00 to 7:30 P.M., on Friday from 9:00 to 12:00 P.M., on Saturday from 9:00 to 12:00 P.M., and on Sunday from 12:00 to 3:00 and from 5:00 to 9:00 P.M. *Housemothers Shall Be Present During the Above Hours Without Exception.*

Student Cooperative Housing Unit—Without assuming liability, financial or otherwise, for claims arising from their operation, the University recognizes student cooperative housing units as provided herein: Fifteen or more students may organize such a unit and request approval by the Division of Student Housing provided they admit to membership properly certified individuals; secure the sponsorship of a responsible organization or individual and an acceptable housemother; mutually agree to share maintenance, cost, and labor on an equal basis without profit; and observe general regulations of the University.

Membership—Applications for membership in a cooperative housing group must be approved by the Division of Student Housing with advice from the Deans of Men and Women. Need, character, and scholastic attainment are considered, and students on scholastic probation or under disciplinary penalties shall not be granted membership.

Illini Hall—Home of the Housing Division



Requirements Before Undertaking Contracts—A group requesting University approval may not enter into contracts or receive a charter until it has submitted to the Division of Student Housing for approval, the following: (a) a statement signed by the sponsor in which he agrees to assume responsibility for a sound financial policy for the group, maintenance of close relations with University officers, and the observance of the University housing regulations; (b) a list of prospective members; (c) a detailed operating budget covering the ensuing year; (d) a description of the proposed residence and conditions of occupancy. Groups whose reports are acceptable shall be granted a charter to be renewed annually on evidence of satisfactory operation.

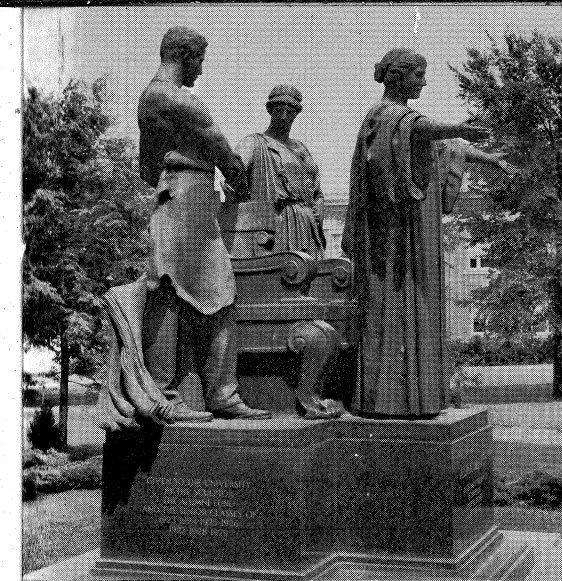
Financial Report—A cooperative house shall file monthly financial reports with the sponsor and the Division of Student Housing. At the close of each semester, a complete report shall be submitted covering expenditures, a budget for the coming semester, and a record of any changes in membership.

Additional Regulations Governing Women Students

All undergraduate women students and their guests and visiting alumnae are governed by these University regulations regardless of the type of residence they select. These regulations are in effect during both Winter and Summer Sessions, and for all vacations except the one following the Summer Session.

1. **Quiet Hours** shall be observed from 8:00 to 12:00 and from 1:00 to 4:00 o'clock during the day. Quiet shall be maintained after 7:30 o'clock each evening except Friday and Saturday.

Illini Union—Center of Student Campus Life



Alma Mater

2. **Signing-out Books** should be used by students for registering plans with chaperon or housemother, when absent from residences in the evening.

3. **Locking of House** shall be done at the closing hour and unlocking only by the chaperon or housemother. Key privilege is not to be given. Food orders are to be delivered before the closing hour.

4. **Regular Closing Hours** are 10:30 on week nights, 1:00 A.M. on Fridays and Saturdays, and 10:30 P.M. on Sundays. During registration week, final examination week, and commencement week, the closing hour for women is 11:00 P.M. There are two or three special functions during the year at which time the closing hour for women will be 2:30 A.M.

5. **Late Permissions** are given only with special permission from the chaperon or housemother, and may be granted only for unusual and infrequent occasions.

6. **Men Callers** should not be received by University women in their houses before 4:00 P.M. during the school term, excluding Saturday and Sunday afternoons. They should always leave at the regular closing hour.

7. **Permission for Leaving Town** is obtained by consulting the housemother or chaperon. She must be informed of time of departure, visiting address, hour of return, and traveling companion. During the school term the student must present the housemother with a letter of permission from her parents. Women are not to arrive or leave town on trains after closing hours.

8. **Undergraduate and Graduate Rooms** are listed at the Division of Student Housing. Undergraduates may live only in University approved homes and graduates may not live in the same house with undergraduates. Non-students may not reside in undergraduate houses.

9. **Change of Residence** may be arranged by securing permission from the Dean of Women and the Division of Student Housing.

10. **Women in Men's Houses** are not allowed without an approved chaperon, and they shall not be permitted to sell articles in Men's Houses.

University Student Housing Policies

All undergraduate and graduate students not residing with parent, guardian, or relative, shall be required to live in places that have been approved by the University unless they have permission from the Division of Student Housing to reside elsewhere.

The housing policy of the University covers standards of health, safety, comfort, moral surroundings, study conditions, social facilities, and reasonableness of charge. The policy is determined by the University and is in accord with recommendations of the American Public Health Association. Student housemothers are held responsible for maintenance of the conditions stated in the policy. The Division of Student Housing acts for the University in enforcement of all housing regulations and in the adjustment and enforcement of room rental contracts.

Standards for Approved Student Homes

1. Size—The capacity of student rooms shall be determined by the Division of Student Housing upon the minimum basis of 500 cubic feet and 63 square feet per student. In the interest of satisfactory study conditions and scholarship, a room shall not be occupied by more than two students unless approved by the Division of Student Housing. Closet space at least 22 inches deep and 3 feet or more in width shall be provided for each individual. Rooms used solely for sleeping shall afford at least 400 cubic feet of air space per person and 50 square feet per bed space. Basement rooms will not be approved.

2. Furnishings—Each student shall have for his or her own use: one study desk or table (work surface of 30 to 40 inches is recommended); one straight-back study chair; one dresser or chest of drawers; adequate book shelves; one mirror; and one metal waste basket. In single rooms, one easy chair or lounge cot shall be provided. Double rooms shall include one easy chair if the students sleep in their rooms. Two easy chairs or one easy chair and a lounge

cot shall be provided in double rooms if students sleep in the dormitory. Floor covering, preferably noise-reducing and sanitary in character, and proper curtains and window shades, shall be provided.

3. Beds and Bedding—Single beds at least 36 inches wide (preferably 39 inches) shall be provided. Double-deck beds are considered undesirable "as favoring mouth spray infection." A space of at least 50 square feet per bed shall be provided and beds must be at least three feet apart. Beds shall possess suitable springs in good repair, a comfortable sanitary mattress, and mattress pad. Pillows, pillowcases, and sheets shall be provided by the housemother who shall be responsible for weekly laundering of sheets and pillowcases. The housemother shall provide other bedding in the absence of a specific agreement to the contrary.

4. Bathroom Facilities—An approved student home shall provide one bathroom (including tub or shower, lavatory, and stool) for its first unit of six individuals and an additional unit for every ten persons or portion thereof residing on the premises. Hot water shall be available from 7:00 A.M. until 10:00 P.M.

5. Plumbing—In order to receive and maintain University approval of a student home, its operator shall present to the University a report from the city plumbing inspector on an inspection of the premises made by him and setting forth his findings and conclusions. The University will decline approval of any home whose sanitary and safety standards are below the minimum provided in "Minimum Requirements for Plumbing," of the U. S. Bureau of Standards.

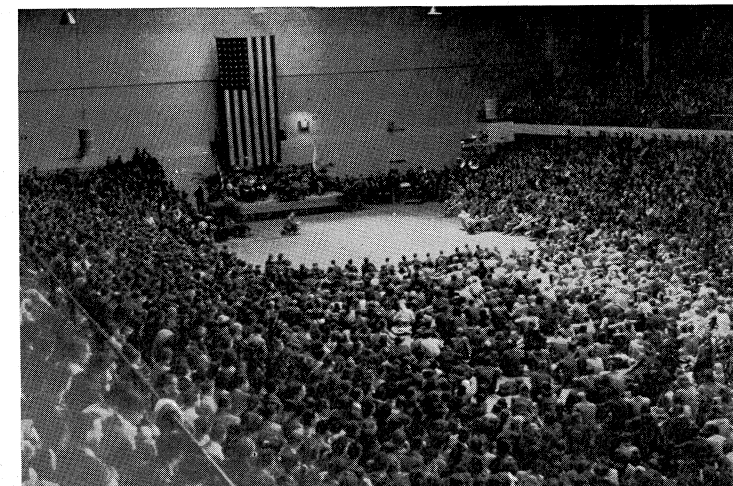
6. Heat and Ventilation—Comfortable temperatures shall be maintained in all study rooms occupied by students between 7:00 A.M. and 11:00 P.M. during the heating season. Provision shall be made to maintain a satisfactory relative humidity. (Some type of window ventilator is recommended in each student room.)

7. Living Room—(a) *Men's Houses*. Each home for more than six men must provide a common and accessible living room or recreation room for the reasonable use of students. (b) *Women's Houses*. Each home for women must have adequate living room facilities available for use of the women students and their guests.

Student
Election



War Convocation
December 11, 1941





Chief Illiniwek

8. Safety—Student homes must comply with all State and city safety laws and ordinances, as well as University requirements in order to minimize fire hazards. To receive and maintain University approval, the student home operator shall secure certificates of safety approval from appropriate city authorities. For the mutual protection of students and house operators all electrical appliances furnished by and for student tenants must comply with Underwriters' Laboratories Safety Standards.

9. Lighting—The glass area in every study and sleeping room shall be at least 15% of all floor space to provide adequate natural lighting. In addition to the general illumination, each student shall be provided with an Illuminating Engineering Society specification study lamp using a 100-watt incandescent bulb for artificial study lighting. Adequate, properly located

electrical outlets shall be provided for dressing table or other necessary lighting. Bulbs shall be furnished and replaced by the housemother. For the purpose of securing proper lighting, room ceilings and sidewalls should be light in color.

10. Electrical Appliances—Each student shall have the privilege of 2 connected electrical appliance units in addition to the study lamp. Additional appliances may be mutually agreed on. There shall be no cooking, ironing, or heating appliances used without specific permission of the housemother.

11. Telephone Service—A house operator must provide telephone service for the reasonable use of student tenants. Special individual house regulations should be made concerning the hours of use, length of call, etc. There must be a phone available at all hours for emergencies.

12. Housekeeping Standards—Houses must be kept clean and sanitary, conforming to standards prescribed by the Division of Student Housing. A house operator shall be responsible for having beds made daily. All rooms used by students must be cared for daily and thoroughly cleaned at least once a week. Bathrooms and fixtures must be cleaned daily. The housemother is held responsible for maintenance of these standards and unsatisfactory housekeeping may warrant revocation of University approval.

13. The Housemother—The housemother of a student home must be approved by the Dean of Women and the Director of Student Housing. She shall be of good health and character, temperamentally suited to her duties as housemother. Her record and experience should indicate business integrity, emotional stability, and the ability to understand and cooperate with young men and women. She shall have no other employment or duties which will take her away from the house at any regular period.

14. House and Surroundings—An approved student home shall present a neat and generally attractive external appearance. Front and rear yards shall be free from offensive and unsightly debris or unsanitary conditions attracting vermin or insects. Entrances, halls, and stairways shall be clean and unobstructed, lighted, and maintained with due regard for public safety.

UNIVERSITY CALENDAR FOR 1943-1944

URBANA DEPARTMENTS

1943

SUMMER TERM

June 8, Tuesday—June 11, Friday . . . Entrance examinations
June 11, Friday—June 15, Tuesday . . . Freshman week program
June 14, Monday Registration of graduates and undergraduates
June 15, Tuesday, 8 A.M. Instruction begins
July 4, Sunday Independence Day (no classes July 5)
Aug. 6, Friday—Aug. 7, Saturday Examinations in eight-week courses
Sept. 24, Friday—Oct. 2, Saturday Examinations in sixteen-week courses

1943

FIRST SEMESTER

Sept. 28, Tuesday—Oct. 1, Friday Entrance examinations
Oct. 7, Thursday—Oct. 12, Tuesday . . . Freshman week program
Oct. 8, Friday—Oct. 9, Saturday Registration of graduate students
Oct. 9, Saturday Registration of freshmen
Oct. 11, Monday—Oct. 12, Tuesday . . . Registration of upperclassmen
Oct. 13, Wednesday, 8 A.M. Instruction begins
Nov. 25, Thursday Thanksgiving Day
Dec. 3, Friday Illinois Day (State admitted to the Union, 1818)
Dec. 22, Wednesday, 8 A.M. Holiday recess begins
Dec. 29, Wednesday, 8 A.M. Holiday recess ends

1944

Jan. 28, Friday—Feb. 5, Saturday Semester examinations

1944

SECOND SEMESTER

Feb. 2, Wednesday—Feb. 5, Saturday . . Entrance examinations
Feb. 11, Friday—Feb. 12, Saturday . . . Registration of graduate students
Feb. 14, Monday—Feb. 15, Tuesday . . . Registration of undergraduates
Feb. 16, Wednesday, 8 A.M. Instruction begins
March 2, Thursday University Day (University opened, 1868)
May 5, Friday Honors Day
May 26, Friday—June 3, Saturday . . . Semester examinations
May 30, Tuesday Memorial Day
June 4, Sunday Baccalaureate and Commencement Exercises

1944

SUMMER TERM

June 6, Tuesday—June 9, Friday Entrance examinations
June 12, Monday Summer term begins
July 4, Tuesday Independence Day
Aug. 5, Saturday Eight-week courses end
Sept. 30, Saturday Summer term ends