

**THE**  
**ILLINOIS**  
**LOYALTY**  
**SONG**

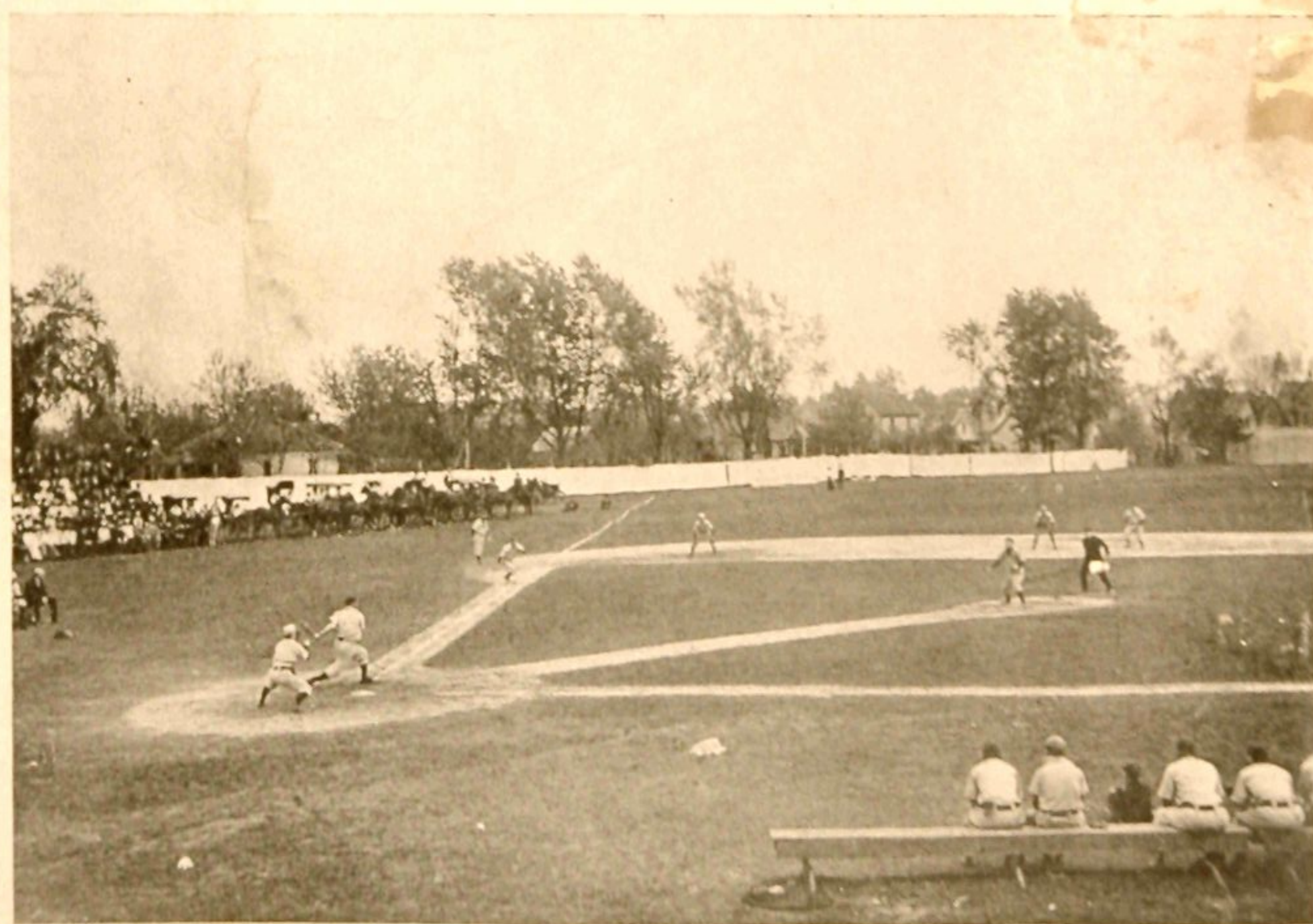


PHOTO COPYRIGHT

1904 BY W.K.WILEY.

PRICE TWENTY-FIVE CENTS

U. OF I. SUPPLY STORE, AGENTS, CHAMPAIGN, ILLINOIS.



# We're Loyal To You, Illinois.

T. H. GUILD.

The piano introduction consists of two staves. The right hand begins with a treble clef, a key signature of two sharps (F# and C#), and a common time signature. It features a series of chords and melodic lines, including a prominent eighth-note pattern in the first few measures. The left hand starts with a bass clef and provides a harmonic accompaniment with chords and a steady eighth-note bass line.

We're loy-al to you, Il - li - nois, ————— We're "Or - ange and

The piano accompaniment for the first vocal line continues with two staves. The right hand features a series of chords and melodic fragments that support the vocal melody. The left hand maintains a consistent harmonic and rhythmic accompaniment.

Blue," Il - li - nois, ————— We'll back you to stand 'Gainst the

The piano accompaniment for the second vocal line continues with two staves. The right hand features a series of chords and melodic fragments that support the vocal melody. The left hand maintains a consistent harmonic and rhythmic accompaniment.

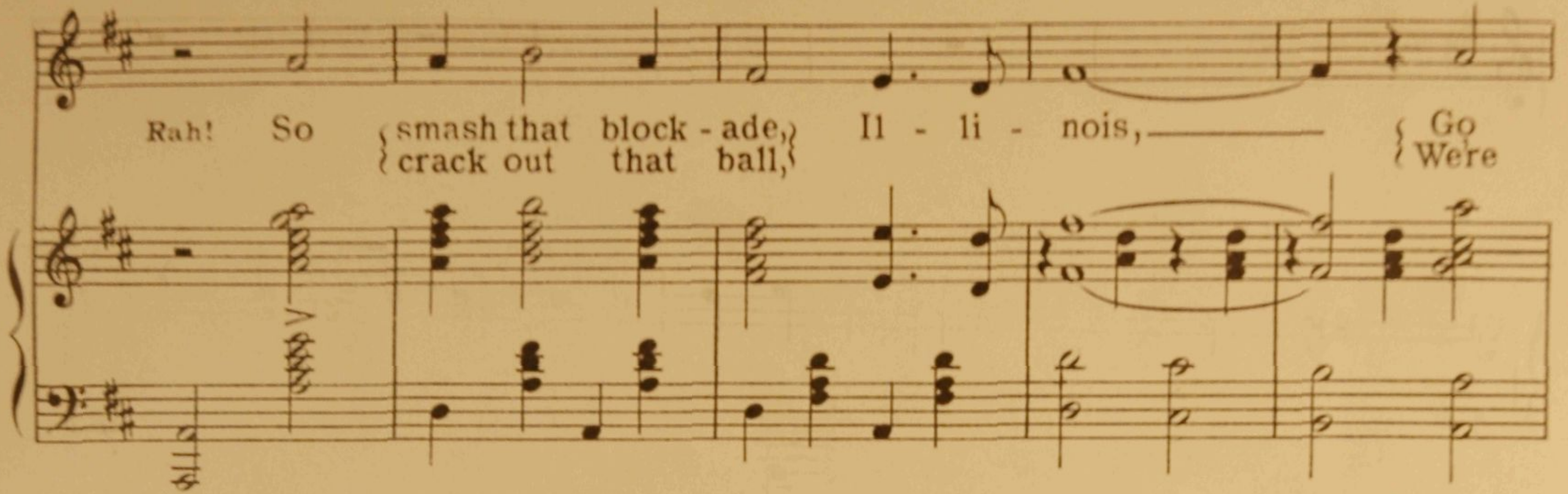
best in the land, For we know you have sand, Il - li - nois, Rah!

The piano accompaniment for the third vocal line continues with two staves. The right hand features a series of chords and melodic fragments that support the vocal melody. The left hand maintains a consistent harmonic and rhythmic accompaniment.



C  
IlbuSil

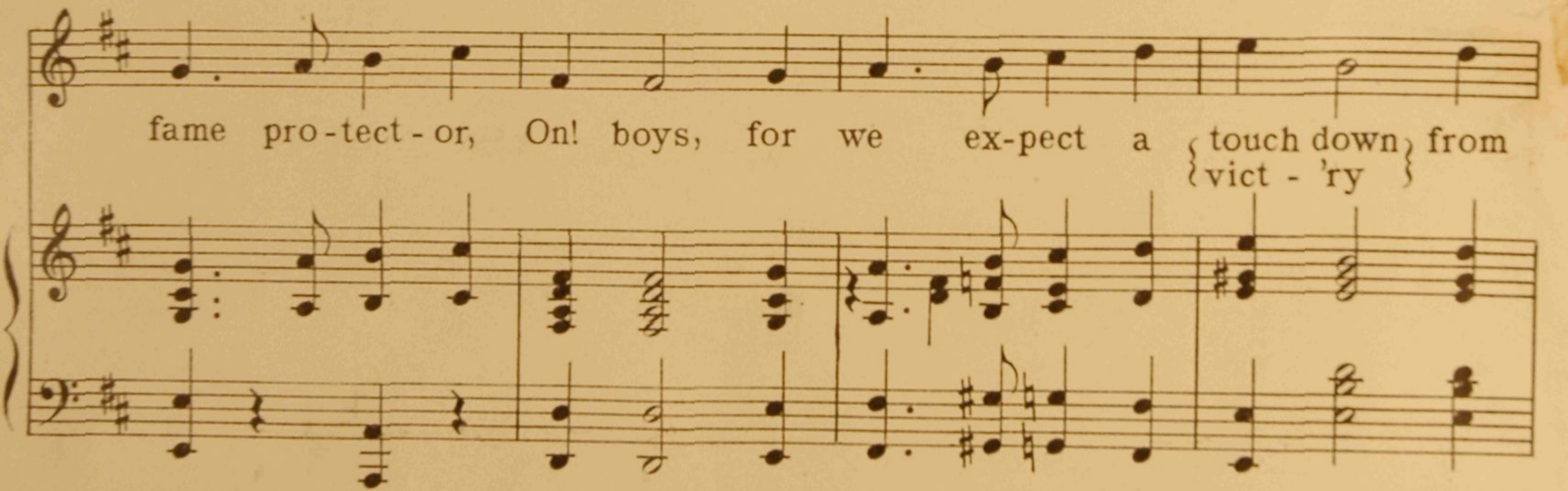
Rah! So {smash that block - ade,} Il - li - nois, {Go  
crack out that ball,} Were



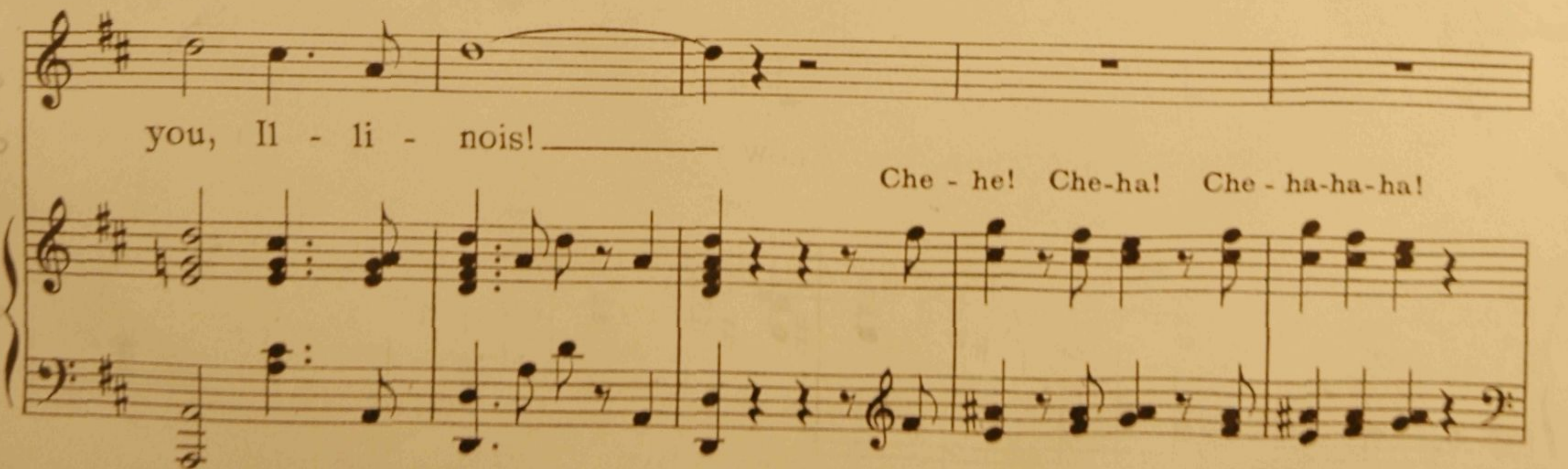
crash - ing a head,} Il - li - nois; Our team is our  
back - ing you all, }



fame pro - tect - or, On! boys, for we ex - pect a {touch down} from  
vict - ry }



you, Il - li - nois! \_\_\_\_\_  
Che - he! Che - ha! Che - ha - ha - ha!





Che - he! Che-ha! Che - ha-ha - ha!

Il - li - nois! Il - li - nois! Il - li - nois!

*R.H.*

Fling out that dear old flag of Or-ange and Blue, Lead on your

sons and daugh-ters, fight-ing for you; Like men of old, on gi - ants



Plac-ing re - li - ance, Shout-ing de - fi - ance\_ Os - key-wow-wow! A-mid the

broad green plains that nour-ish our land, For ho - nest La - bor

and for Learn-ing we stand, And un - to thee we pledge our

heart and hand, Dear Al - ma Ma - ter Il - li - nois.