

University · of · Illinois

More than 2,000 Different Courses Are Offered During the School Year in the Various Curricula



In the Front Rank of the World's Great Universities



(1) The Library (2) The "Broadwalk" Between Classes (3) The Auditorium (4) Memorial Stadium (5) The Combined Booths



Built By and For the People of the State of Illinois



Instruction May Be Had in the Following Schools and Colleges

In Urbana - Champaign

- | | |
|---|---|
| Graduate School (for advanced work) | College of Agriculture |
| College of Liberal Arts and Sciences | College of Education |
| College of Commerce and Business Administration | College of Law |
| College of Engineering, including courses in Ceramics, Civil, Electrical, Mechanical, Mining, and Railway | College of Fine and Applied Arts, including courses in Art, Architecture, Landscape Architecture, Music |
| | Library School |
| | School of Journalism |
| | School of Physical Education |

In Chicago

- | | |
|----------------------|---------------------|
| College of Medicine | College of Pharmacy |
| College of Dentistry | |

COURSES BY CORRESPONDENCE

The University has recently inaugurated a plan whereby those persons who wish to take work towards a degree but who cannot at the present time attend the University in person, may enroll for Extension Courses.

Courses are now being offered in English literature, history, mathematics, political science, civil engineering, electrical engineering, mechanical engineering, mining engineering, railway engineering, general engineering, drawing, physics, mechanics, accountancy, business law, advertising, economics, French, and German.

Fees are at the rate of five dollars per semester hour of credit. For complete information write to the Director, University Extension, Urbana, Illinois.

Estimated Annual Expense Budgets for University of Illinois Students

	Minimum Budget	Maximum Budget
1. Room (9 months)	\$ 72.00	\$ 90.00
2. Board (9 months)	200.00	225.00
3. Clothing	40.00	75.00
4. Tuition (incidental fee)	70.00*	70.00*
5. Fees (if laboratory courses are taken)	5.00	5.00
6. Locker	4.00	4.00
7. Hospital Association	6.00*	6.00*
8. Text Books	20.00*	30.00*
9. Supplies	4.00	18.00
10. Railroad Fare (average 125 miles)	10.00*	20.00*
11. Laundry	9.00*	9.00*
12. Miscellaneous	20.00	90.00*
	\$460.00	\$642.00

*\$10.00 deposit on railroad tickets required. The amount when tickets are issued. *\$10.00 deposit on hospital association. *\$10.00 deposit on text books. *\$10.00 deposit on laundry. *\$10.00 deposit on miscellaneous.

Tuition... \$70.00 per year

The Major Cost of Your Education at Illinois Comes from State Funds

This poster is produced to answer in advance as many as possible of the thousands of inquiries normally made each year by high school students of the state. For additional information write to the Public Information Office, 362 Administration Building, Urbana, Illinois

University · of · Illinois

More than 2,000 Different Courses Are Offered
During the School Year in the Various Curricula



In the Front
Rank of the
World's
Great
Universities



Built By
and For
the People
of the State
of Illinois

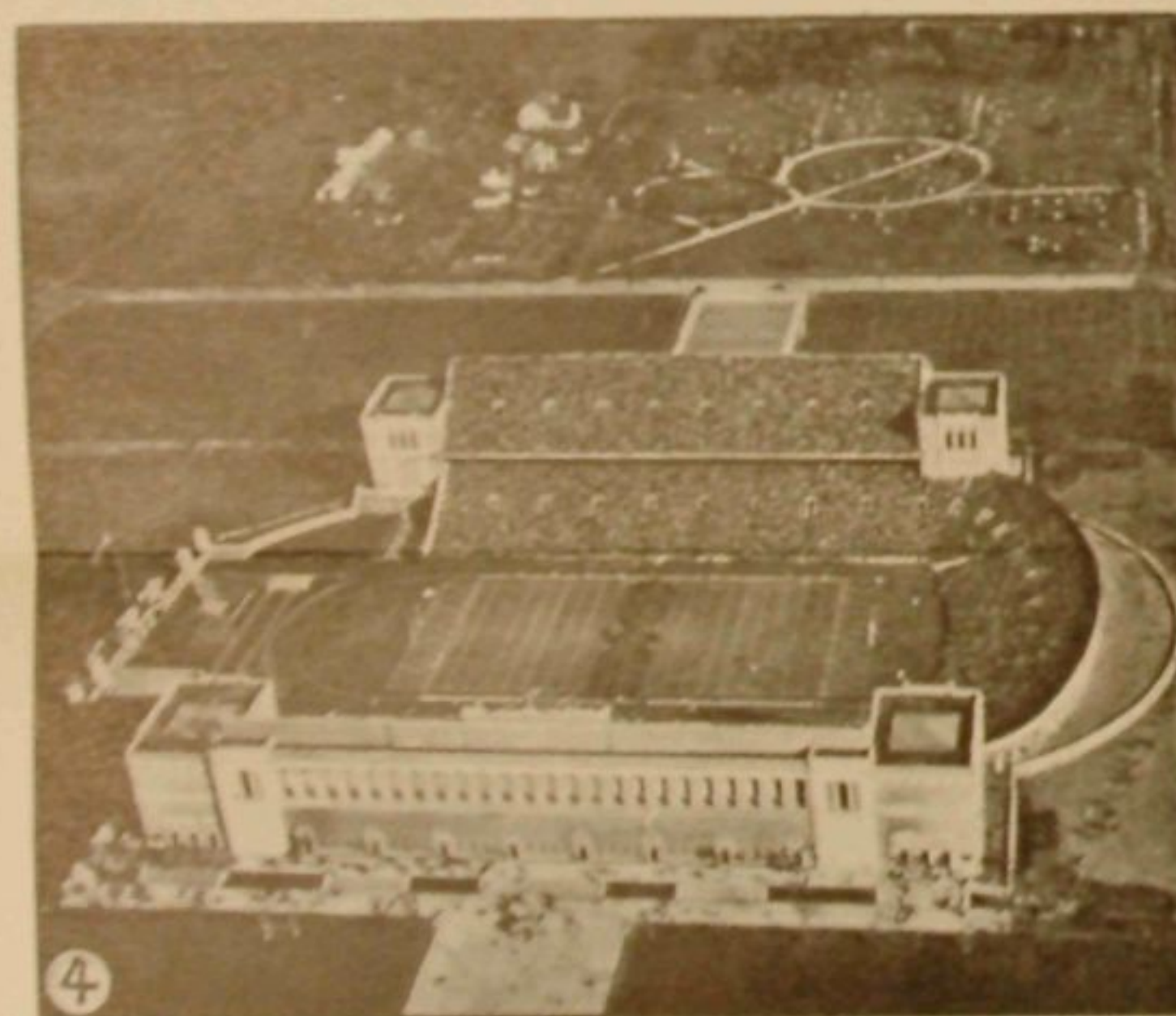
During the School Year in the Various Curricula



In the Front Rank of the World's Great Universities



Built By and For the People of the State of Illinois



(1) The Library (2) The "Broadwalk" Between Classes (3) The Auditorium (4) Memorial Stadium (5) The Combined Bands



Instruction May Be Had in the Following Schools and Colleges

In Urbana - Champaign

- | | |
|---|---|
| Graduate School (for advanced work) | College of Agriculture |
| College of Liberal Arts and Sciences | College of Education |
| College of Commerce and Business Administration | College of Law |
| | College of Fine and Applied Arts, including courses in Art, Architecture, Landscape |

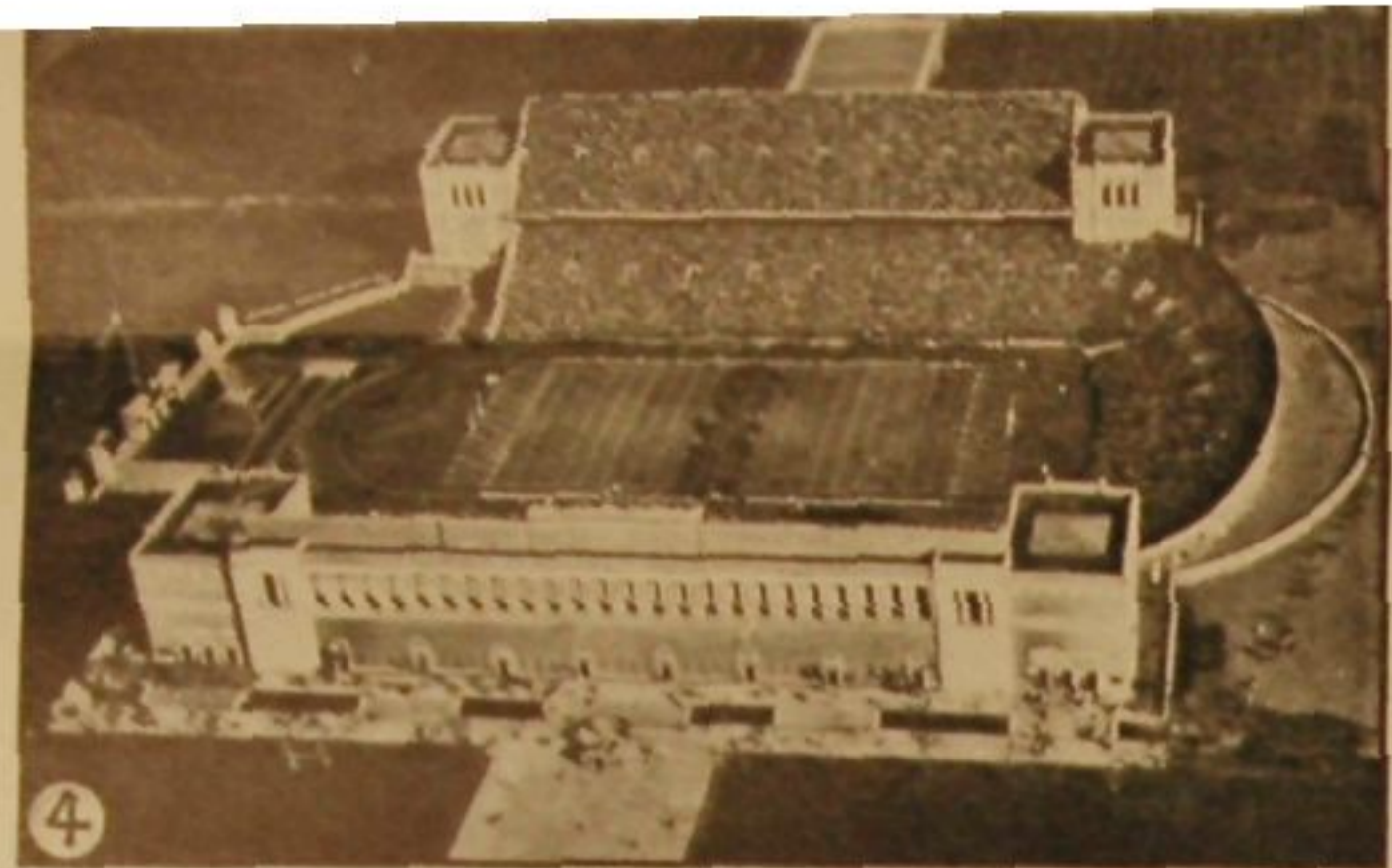
COURSES BY CORRESPONDENCE

The University has recently inaugurated a plan whereby those persons who wish to take work towards a degree but who cannot at the present time attend the University in person, may enroll for Extension Courses.

Courses are now being offered in English literature, history, mathematics, political science, civil engineering, electrical engineer-

Estimated Annual Expense Budgets for University of Illinois Students

	Minimum Budget	Moderate Budget
1. Room (9 months)	\$ 72.00	\$ 90.00
2. Board (9 months)	200.00	225.00
3. Clothing	40.00	75.00
4. Tuition (incidental fee)	70.00 ¹	70.00 ¹
5. Fees (if laboratory courses are taken)	5.00	5.00
6. Locker	4.00	4.00
7. Hospital Association	6.00 ²	6.00 ²
	20.00 ³	30.00 ³



4



5



(1) The Library (2) The "Broadwalk" Between Classes (3) The Auditorium (4) Memorial Stadium (5) The Combined Bands

Instruction May Be Had in the Following Schools and Colleges

In Urbana - Champaign

Graduate School (for advanced work)	College of Agriculture
College of Liberal Arts and Sciences	College of Education
College of Commerce and Business Administration	College of Law
College of Engineering, including courses in Ceramics, Civil, Electrical, Mechanical, Mining, and Railway	College of Fine and Applied Arts, including courses in Art, Architecture, Landscape Architecture, Music
	Library School
	School of Journalism
	School of Physical Education

In Chicago

College of Medicine	College of Pharmacy
College of Dentistry	

COURSES BY CORRESPONDENCE

The University has recently inaugurated a plan whereby those persons who wish to take work towards a degree but who cannot at the present time attend the University in person, may enroll for Extension Courses.

Courses are now being offered in English literature, history, mathematics, political science, civil engineering, electrical engineering, mechanical engineering, mining engineering, railway engineering, general engineering drawing, physics, mechanics, accountancy, business law, advertising, economics, French, and German.

Fees are at the rate of five dollars per semester hour of credit. For complete information write to the Director, University Extension, Urbana, Illinois.

Estimated Annual Expense Budgets for University of Illinois Students

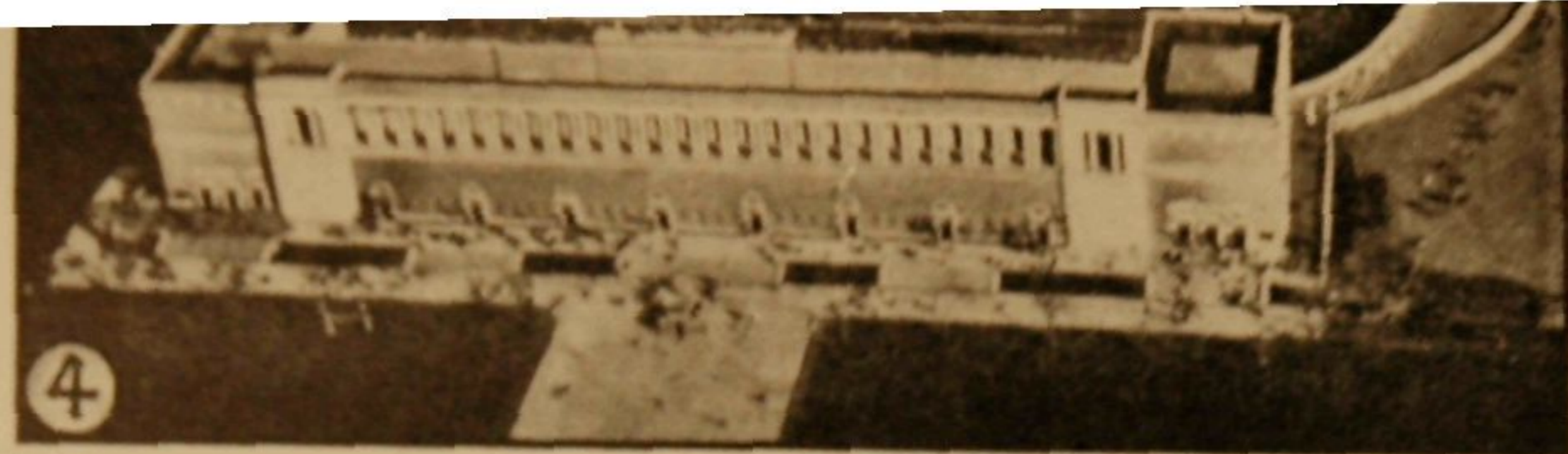
	Minimum Budget	Moderate Budget
1. Room (9 months)	\$ 72.00	\$ 90.00
2. Board (9 months)	200.00	225.00
3. Clothing	40.00	75.00
4. Tuition (incidental fee)	70.00 ¹	70.00 ¹
5. Fees (if laboratory courses are taken)	5.00	5.00
6. Locker	4.00	4.00
7. Hospital Association	6.00 ²	6.00 ²
8. Text Books	20.00 ³	30.00 ³
9. Supplies	4.00	18.00
10. Railroad Fare (average 125 miles)	10.00 ⁴	20.00 ⁴
11. Laundry	9.00 ⁵	9.00 ⁵
12. Miscellaneous	20.00	90.00 ⁷
	<u>\$460.00</u>	<u>\$642.00</u>

¹\$15.00 deposit on military uniform required if the student takes military training, but this is refunded when uniform is returned. ²Optional but recommended as protection in case of illness. ³Second hand. ⁴Two round trips (excursion rates). ⁵Four round trips. ⁶Mailed home. ⁷Optional for recreation, fraternity dues, etc.

Tuition... \$70.00 per year

The Major Cost of Your Education at Illinois Comes from State Funds

This poster is produced to answer in advance as many as possible of the thousands of inquiries normally made each year by high school students of the state. For additional information write to the Public Information Office, 362 Administration Building, Urbana, Illinois



4



5

(1) The Library (2) The "Broadwalk" Between Classes (3) The Auditorium (4) Memorial Stadium

Instruction May Be Had in the Following Schools and Colleges

In Urbana - Champaign

Graduate School (for advanced work)

College of Liberal Arts and Sciences

College of Commerce and Business Administration

College of Engineering, including courses in Ceramics, Civil, Electrical, Mechanical, Mining, and Railway

College of Agriculture

College of Education

College of Law

College of Fine and Applied Arts,

including courses in Art,

Architecture, Landscape

Architecture, Music

Library School

School of Journalism

School of Physical Education

In Chicago

College of Medicine

College of Dentistry

College of Pharmacy

COURSES BY CORRESPONDENCE

The University has recently inaugurated a plan whereby those persons who wish to take work towards a degree but who cannot at the present time attend the University in person, may enroll for Extension Courses.

Courses are now being offered in English literature, history, mathematics, political science, civil engineering, electrical engineering, mechanical engineering, mining engineering, railway engineering, general engineering drawing, physics, mechanics, accountancy, business law, advertising, economics, French, and German.

Fees are at the rate of five dollars per semester hour of credit. For complete information write to the Director, University Extension, Urbana, Illinois.

COURSES BY CORRESPONDENCE

The University has recently inaugurated a plan whereby those persons who wish to take work towards a degree but who cannot at the present time attend the University in person, may enroll for Extension Courses.

Courses are now being offered in English literature, history, mathematics, political science, civil engineering, electrical engineering, mechanical engineering, mining engineering, railway engineering, general engineering drawing, physics, mechanics, accountancy, business law, advertising, economics, French, and German.

Fees are at the rate of five dollars per semester hour of credit. For complete information write to the Director, University Extension, Urbana, Illinois.

Estimated Annual Expense Budgets for University of Illinois Students

	Minimum Budget	Moderate Budget
1. Room (9 months)	\$ 72.00	\$ 90.00
2. Board (9 months)	200.00	225.00
3. Clothing	40.00	75.00
4. Tuition (incidental fee)	70.00 ¹	70.00 ¹
5. Fees (if laboratory courses are taken)	5.00	5.00
6. Locker	4.00	4.00
7. Hospital Association	6.00 ²	6.00 ²
8. Text Books	20.00 ³	30.00 ³
9. Supplies	4.00	18.00
10. Railroad Fare (average 125 miles).	10.00 ⁴	20.00 ⁵
11. Laundry	9.00 ⁶	9.00 ⁶
12. Miscellaneous	20.00	90.00 ⁷
	<u>\$460.00</u>	<u>\$642.00</u>

¹\$15.00 deposit on military uniform required if the student takes military training, but this is refunded when uniform is returned. ²Optional but recommended as protection in case of illness. ³Second hand. ⁴Two round trips (excursion rates). ⁵Four round trips. ⁶Mailed home. ⁷Optional for recreation, fraternity dues, etc.

^c
Ilbu Tum

THE LIBRARY OF THE

JUL 13 1934

University of Illinois Bulletin

UNIVERSITY OF ILLINOIS

Vol. XXXI

April 3, 1934

No. 31

Published Weekly by

THE UNIVERSITY OF ILLINOIS

Entered as second-class matter December 11, 1912, at the post office at Urbana, Illinois, under the Act of August 24, 1912. Acceptance for mailing at the special rate of postage provided for in section 1103, Act of October 3, 1917, authorized July 31, 1918.