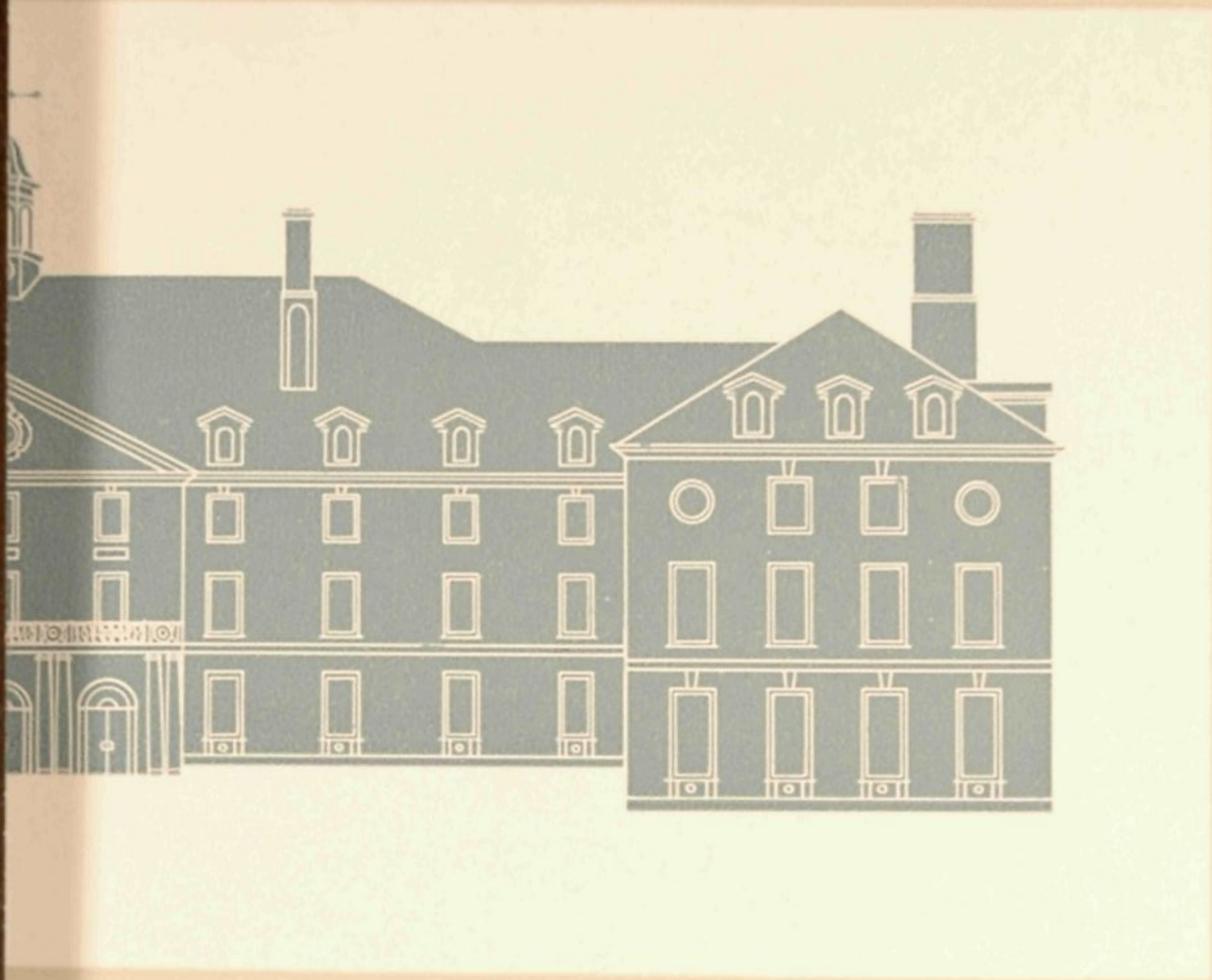
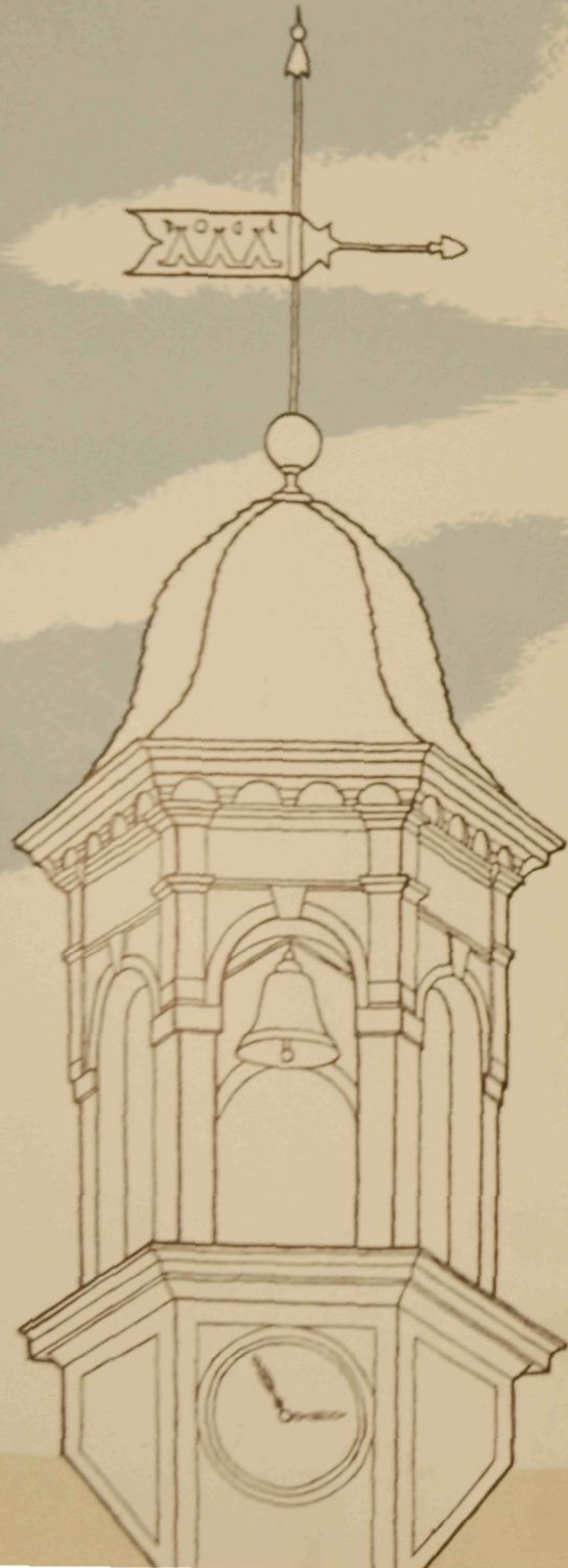


^c
IlbuWilt
cop. 3

Ten
Years



THE
UNIVERSITY
OF ILLINOIS



*Illini
Union*

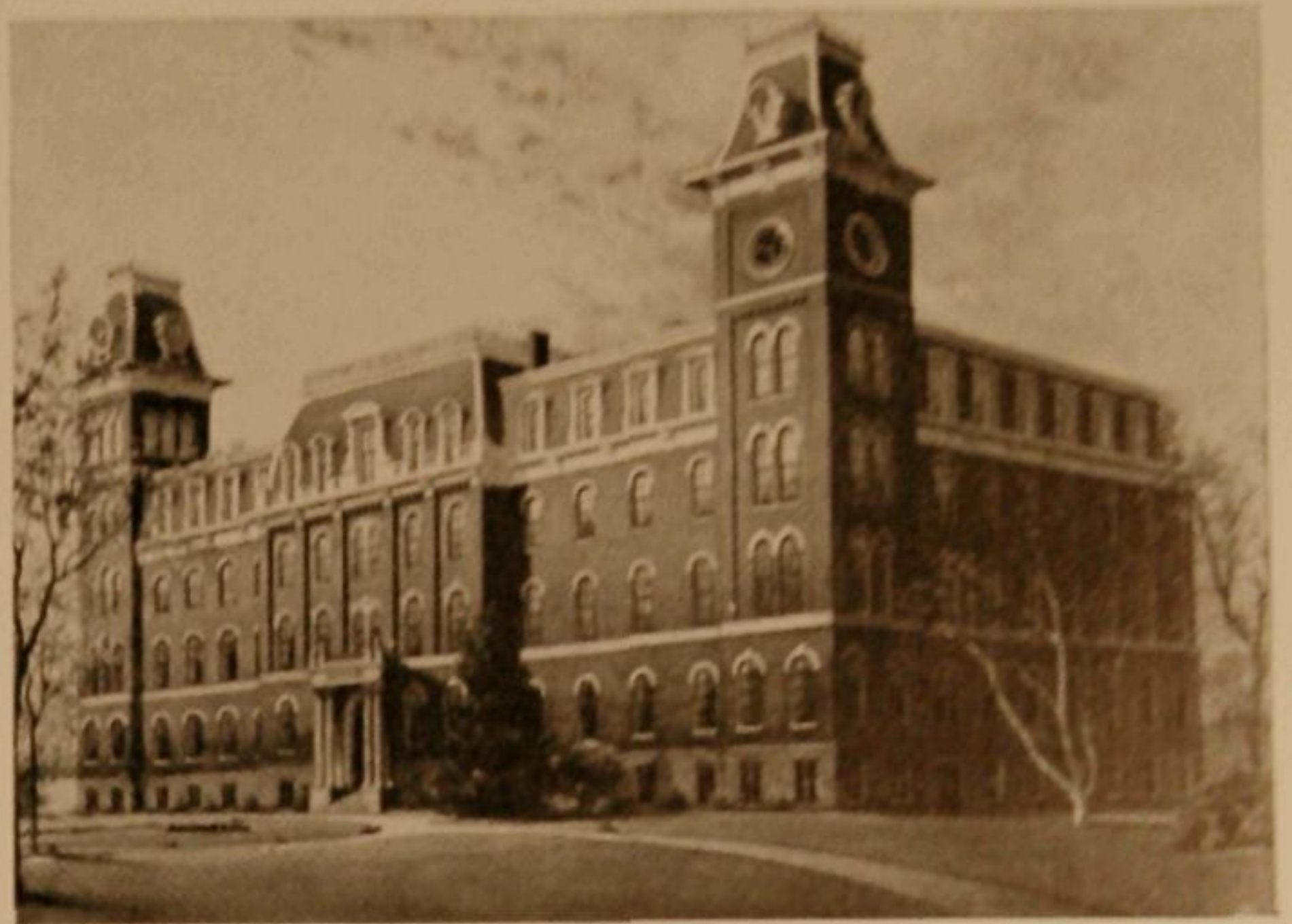


The Illini Union stands ready for a variety of services to past, present, and future generations of students of this University. Conceived in accordance with the best and finest traditions of early American colonial architecture, it is one of the most distinguished buildings of its kind in America. . . . It symbolizes the democratic spirit of a great university. It is a place where every student is equally welcome and in which every student has an equal share; a place where students, faculty, and alumni may meet each other socially and informally, and thereby promote the best in Illini traditions of loyalty to their University and to each other. . . . The sole idea has been to provide a distinguished social center for campus life, which it is hoped will furnish not only service but real inspiration for better living and a finer University to all who enter its doors.

A. C. WILLARD, PRESIDENT OF THE UNIVERSITY, 1934-1946

At the Opening of the Illini Union, February 8, 1941

C
Ilbu Wilt
cop. 3



HISTORY

The Illini Union is more than a building — it is an institution with its roots deep in the past.

The completion of the building ten years ago was the realization of a dream held by many Illini since the beginning of the century. Two active student organizations, one the Woman's League organized in 1897, and the other the Illinois Union organized for men students in 1909, saw the need for a Union building as they worked together on activities such as Homecoming, pep meetings, cap burning, and student opera. In 1910 these student groups began making their plans and desires known.

It took them nine years to get a start. In 1919 the Illinois Union rented quarters on the first floor of the Y.M.C.A. building on the corner of Wright and John streets — now Illini Hall. By 1927 the Union had purchased the whole Y.M.C.A. building plus the Bradley Arcade building as an annex.

The Illinois Union was then a separate corporation directed by students and faculty, called the University of

15 must dining coop



Illinois Union, Inc. It owned all the property, and within the ranges of its fluctuating income from voluntary membership, it guided student activities throughout the twenties and most of the thirties.

Meanwhile, interest in a specially built Union building intensified until 1934 when A. C. Willard was inaugurated as president of the University. One of President Willard's first official acts was to investigate the Union building problem. He appointed an "Advisory Committee on Functions and Operations of Student Center Buildings." This committee didn't leave a person uncounted nor a site unmeasured in their attempt to find just the right location. And when the University decided to raze University Hall, the decision was unanimous to build the new Illini Union building where it now stands.

The next problem was money. Since it was not to be appropriated by the State Legislature, the University obtained a Federal Grant of \$544,000 and an insurance company loan of \$656,000 more, to be paid off by funds from a small fee to be assessed against each student. The furnishings and equipment were purchased from contributions ranging between \$1.00 and \$25,000.00 from alumni, faculty, and friends.

In June, 1938, the forerunner of the present Illini Union Board was formed — the "Advisory Committee on the Management and Operation of the Illini Union Building." Then, in 1939, actual construction work began. And with the beginning of construction, work was also begun on organization and integration of activities to take place in the new building. The first step was the emergence of a new men's student organization, known as the Men's

League, out of the old Illinois Union. It corresponded to the Woman's League in responsibilities and function.

Then came one of the first signs that the structure now rising in the heart of the campus was really more than a building. It was originally intended that the Advisory Committee confine its activities to the operation of the building itself. It was soon apparent that the "operation of the building" meant ever-increasing service in a physical, educational, and recreational way. Who, then, was to sponsor the Illini Union activity program — the Advisory Committee, the Men's League, or the Woman's League? Until a better solution was found, it was decided that the Advisory Committee would sponsor a program of classical music hours, while the Men's League and/or the Woman's League would sponsor other student programs within the building.

The solution began to come clear in 1941. In January of that year the name of the Advisory Committee was changed to "Illini Union Board," which was to supervise the general student program within the building with the aid and cooperation of the Men's League and the Woman's League. In August of the following year, growing out of the previous long-standing and formative organizations, the present Illini Union Board was established.

Meanwhile, on February 5, 1941, just two years after construction began, the long-awaited building was opened. The formal dedication was held in the fall, and appropriately enough, a year later, Eleanor Roosevelt, then First Lady of the Land, was here to cut the cake at the Illini Union's first birthday party.



"When Illini live intimately with the Illini Union for four years, they are inculcated with a deep and abiding appreciation of classic architectural beauty." — Dean Rexford Newcomb, University of Illinois College of Fine and Applied Arts



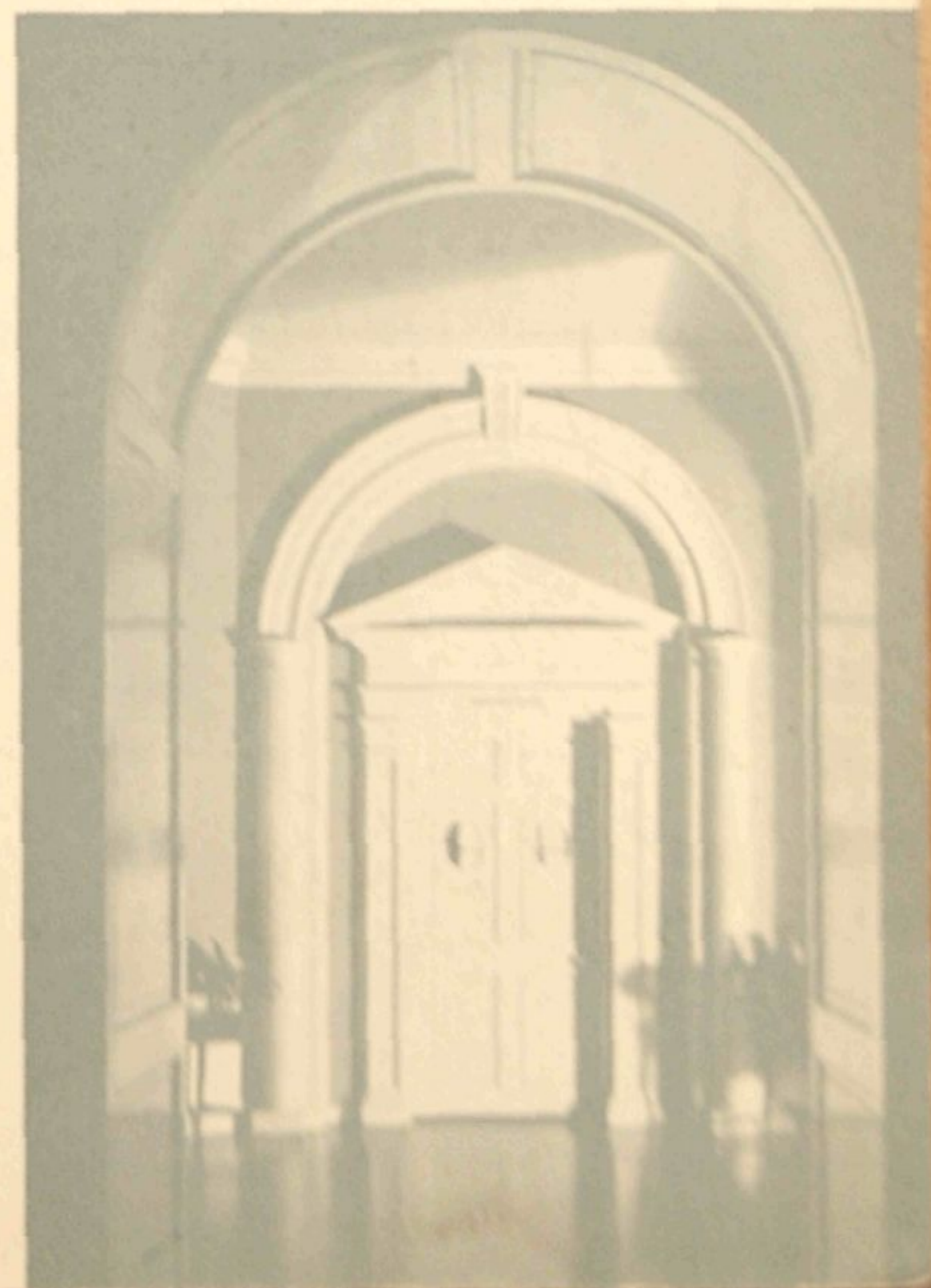
AN OUTSTANDING EXAMPLE . . .





Whether you see the intricate detail of a stairwell, or look down a corridor of arched doorways, or gaze upon the full sweep of its imposing façade, the Illini Union building is an outstanding blend of early American architectural styles into a warm, comfortable, and stately mansion. Now, after only ten years, it seems that the Illini Union building has been here from the beginning. It seems to be as natural a part of the 82-year-old campus landscape as the twisting elm on the quadrangle exposure and as Green Street in the front.

For many Illini the 30-foot open-arched cupola and its 11-foot bronze weather vane is the distinctive feature of the Illini Union building. And a fitting symbol it is. Its eight-foot bronze arrow points ever windward with a replica of an Indian arrowhead. The feathered end is slit with traditional Illini cutouts indicating the four phases of the moon and three wigwams. In the belfry of the cupola is the University's historic chapel bell; at its base is the old clock which was the gift of the Class of '78. And now, after ten years, depictions of the cupola are appearing on certain university publications as the hallmark of the University of Illinois.

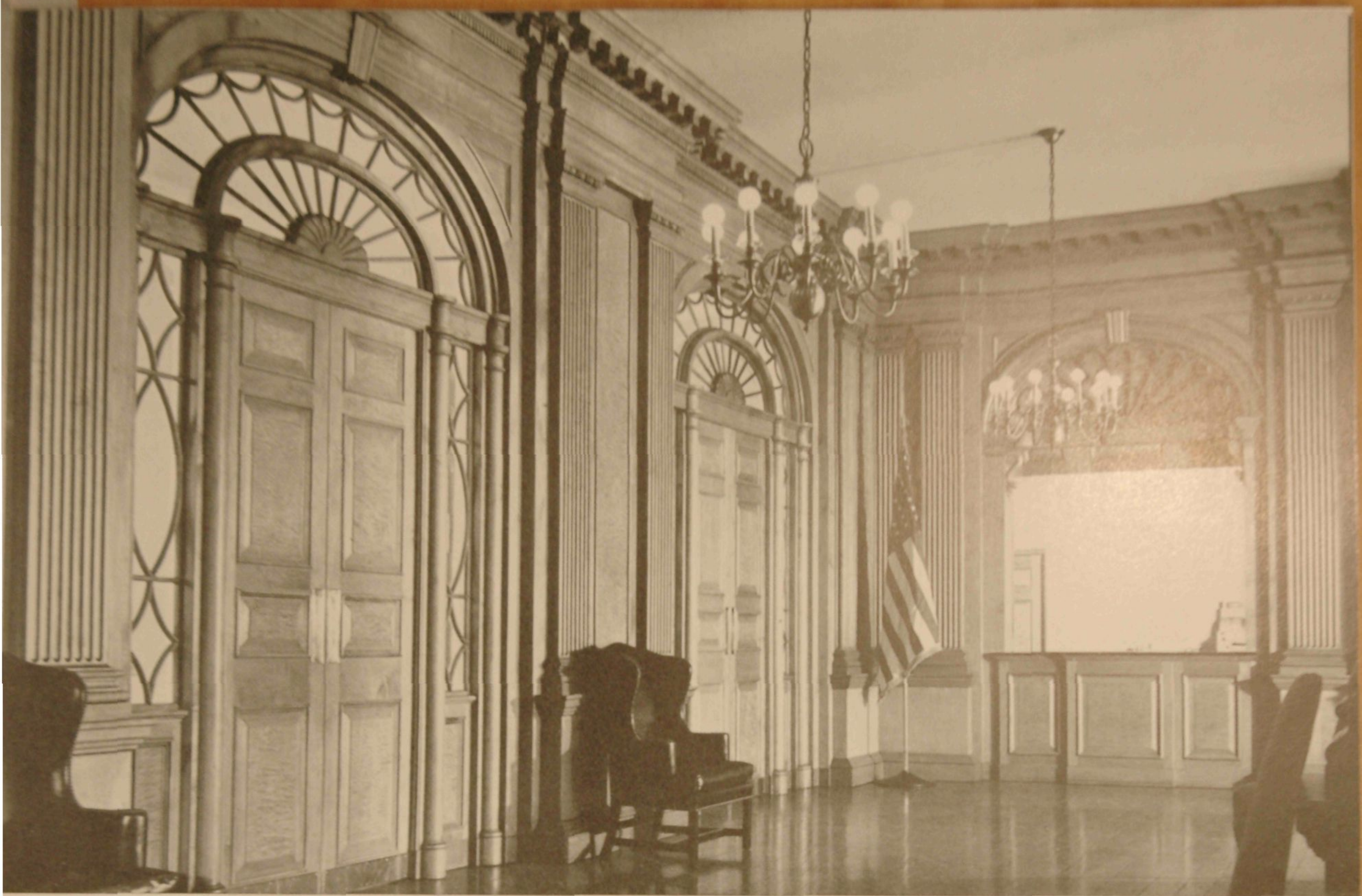


For many other Illini the building's architectural distinction is not so singular. For them it is manifest in the skillful blend of Virginia and Georgian materials and decor—in the maple panels walling the Main Lounge; in the random width walnut plank flooring; in the marble facings on the ten working fireplaces; in the carved wood pilaster caps, cornice modillions, and overmantels; in the fan ornament over office doorways; in the white stair risers; in the wood-paneled wainscot on the stair walls; in the tandem crystal chandeliers—in innumerable tiny but authentic details.

For these Illini the striking green design of the Colonial Room wallpaper; the rich brown on the General Lounge walls; the change of pace as they move from the knotty pine walls of the Pine Room to the ivory and blue of the Wedgwood Room—all help to make the Illini Union what it is. These authentic early American interiors in the Illini Union were developed only after scrupulous study and adaptation from over forty volumes of illustrations loaned for the purpose by the University's Architectural Library.

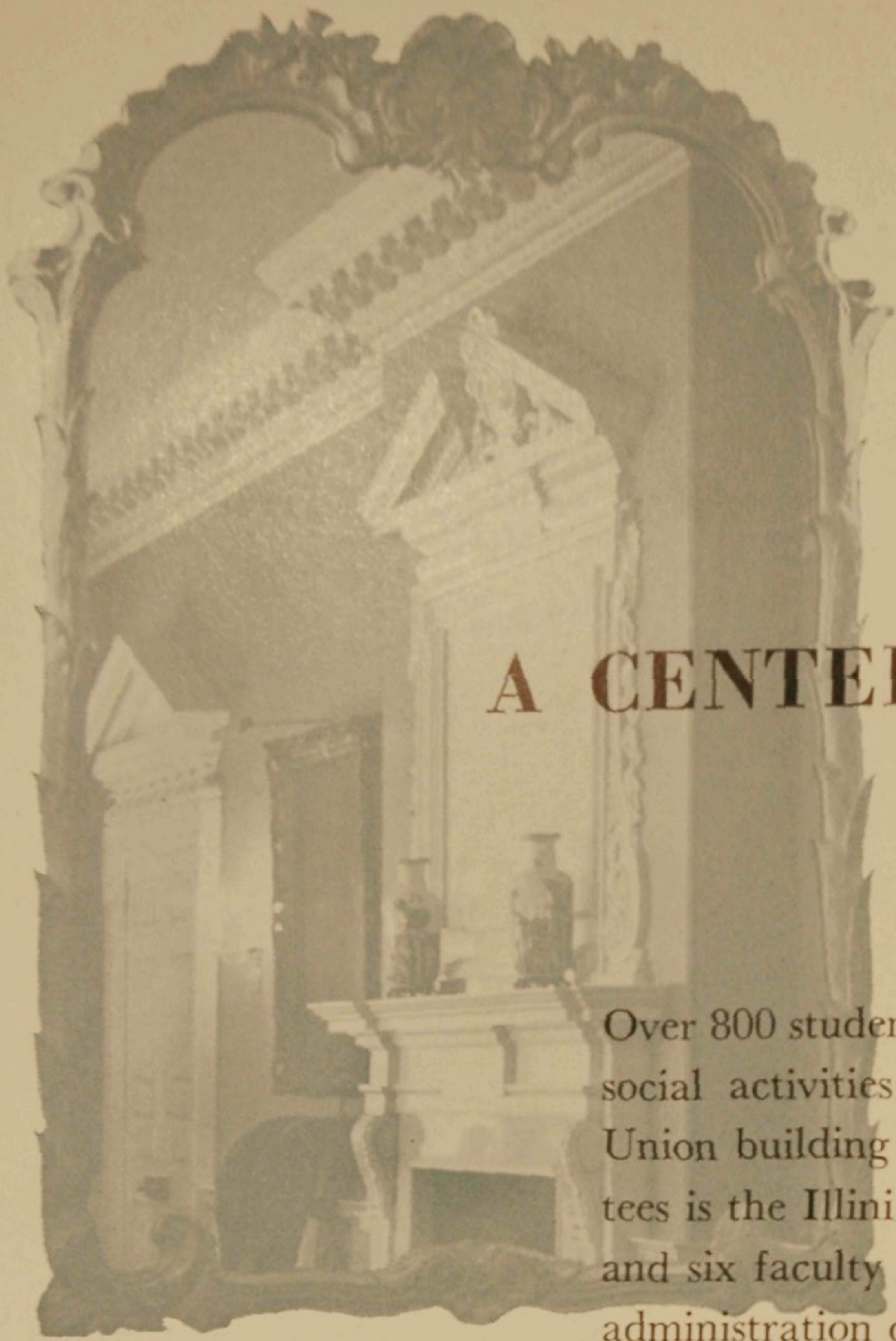
But still other Illini know the Illini Union building not as a period piece, but as an example of functional, useful architecture. They know its easy-to-walk-on cork or rubber-tiled floors located in the areas where the traffic is heaviest. They see the effectiveness of the four-directional entry into the Main Lounge. They recognize the easy architectural flow from room to room, and from floor to floor by self-operating elevators and stairways of mild gradient. They appreciate the double duty of the private dining rooms





and meeting rooms with their movable walls. They know of the efficiency of the gleaming stainless steel kitchens and the two-directional counter in the Tavern. For all who enter over the Crab Orchard flagstone of the south terrace, or through the Virginian portico from Green Street, the Illini Union is an outstanding example — both of architectural beauty and of a center for campus activity.





A CENTER FOR ACTIVITIES

Over 800 students work on the special committees that plan social activities taking place in some room of the Illini Union building almost every day. Directing these committees is the Illini Union Board, composed of twelve students and six faculty members. The Board is responsible for the administration of "programs which serve the cultural, educational, recreational, and social interests of the general student body." Ten years ago the Board sponsored a single program; this year it will sponsor thirty-eight.

But all the student activities that take place in the Illini Union building are not sponsored by the Illini Union Board. Its facilities are used by all student organizations for their formal dances, business meetings, banquets, or special events. The Student Senate, Interfraternity Council, Men's Independent Association, Panhellenic Council, Women's Group System, Star Course, and Campus Chest have their offices on the third floor.

A typical Illini Union-sponsored program is the Thursday afternoon Coffee Hour, a time and place for students and faculty to get together informally. The spontaneity of a December Coffee Hour, for example, might be heightened when students "trim-a-limb" of the Union's ladder-high Christmas tree — singing carols and attracting onlookers to join in the holiday spirit.

Before (and sometimes after) home football games, hundreds of cheering students turn out for another Union activity—the football Pep Rallies, held on the Auditorium steps, or just outside the Union.





Some of these same students who enjoy the classical music programs might gather around the Commons on Thursday nights with the other Bop fans to take part in Jazz-U-Like-It. Faculty members or students plan a program of popular music each week — with records of famous bands, student combinations, or local bands who give their renditions of popular numbers and old jazz standards. The programs are always interspersed with informal discussions on the music of the evening, giving everyone a chance to participate in a lively exchange of ideas.

12





"The most important single factor in a modern liberal education is the education which students receive from one another." — James B. Conant, President, Harvard University





"Four Star and Circle 'Round" and away they whirl to square dance music in one of the Union dances. But for students who do not wish to chance a dos-à-dos, the Union provides a varied program of dances. These include Wednesday Matinee Dances in the Commons, Friday night Record Hops in the third floor Ballroom, Saturday night Couple Dances in the Ballroom, and Friday night Club Commons — complete with floor show.

The Union also presents music for listening. These programs of music by the great masters are presented daily by the Classical Music Hours Committee. Members plan and present the program — considering requests from their listeners — in the comfortable General Lounge on the second floor.



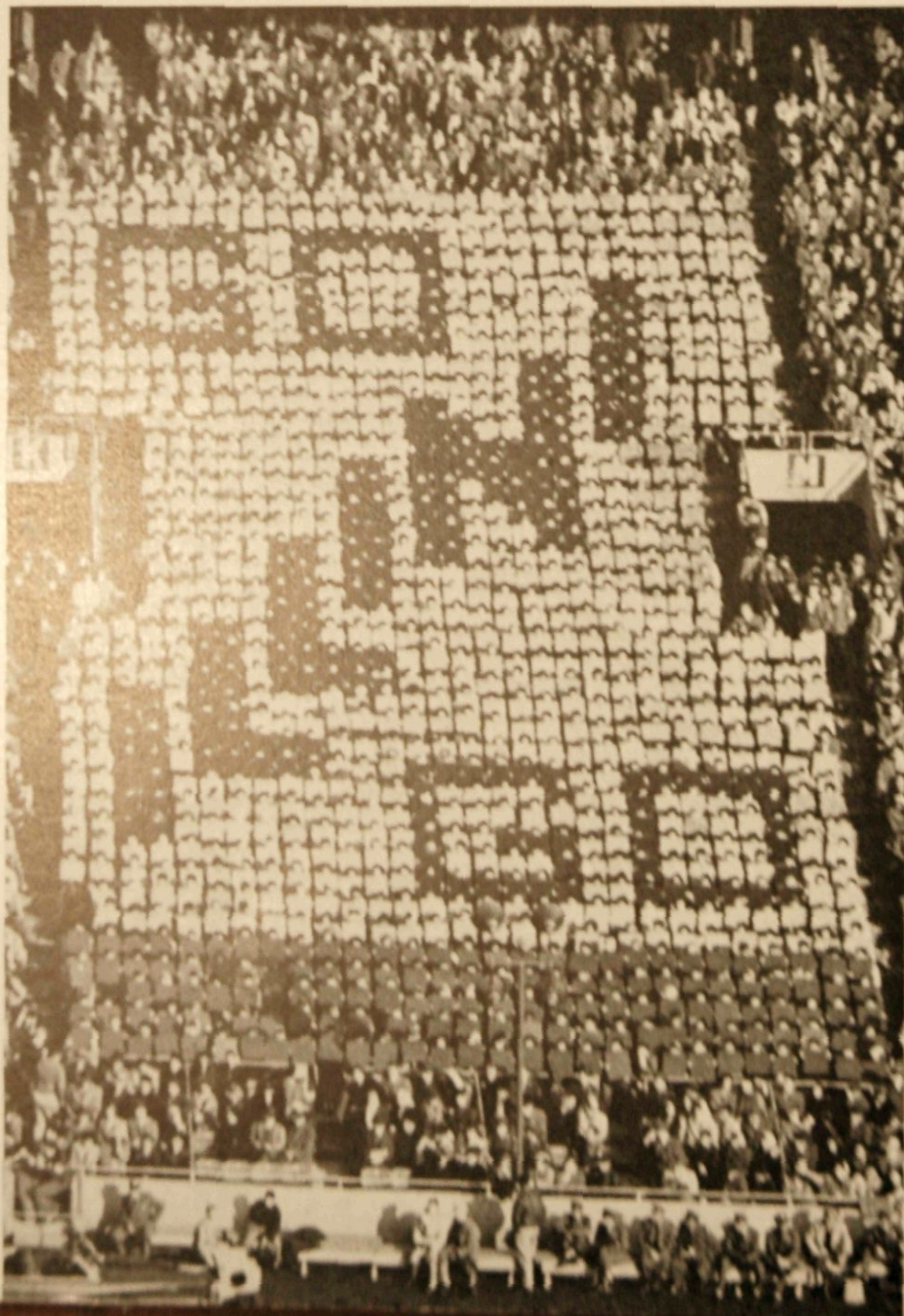


"I would venture to say that there has been far more philosophy of life learned over coffee or cokes at the Union than has come out of many of our philosophy classrooms." — Alfred B. Bonds, Jr., President's Commission on Higher Education



Some of the Illini Union activities taking place outside the Union building include Union Movies, University Sings, the High School Circus, and Block "I."

The synchronized movements of exactly 1,100 students in Block "I" create colorful formations for football fans at Memorial Stadium. The formations are the result of intensive pre-game planning and work by another 76 students who design them, prepare and distribute the flash cards used, publicize the formations, supervise their execution, and handle all the small details that assure the successful presentation of the different formations — sometimes as many as 18 — given at all the home games.





Inside the Illini Union building alumni register for Homecoming, and committee members officially start the sale of Homecoming Badges by pinning the first badge on the President of the University. During the half-time ceremonies on the Stadium field, Chief Illiniwek in front of nearly 70,000 fans, crowns the Dad chosen "King for a Day."

17



Three big activities sponsored by the Illini Union give all organized houses on campus an opportunity to join the many committees behind their production and to be actual participants in them. Two of these, in addition to Badge Sales, take place at Homecoming: Homecoming Decorations and the Homecoming Stunt Show. Every year a string of spectators on foot and in cars strain to see the many house decorations painstakingly prepared for them by students who really pitch in to work out these gigantic displays.





And houses petition through the Illini Union to enter the Homecoming Stunt Show — each house presenting a skit or musical production written and performed by its students; typical is a version of the Gay Ninety Barber Shop Quartet.

The third activity is the Spring Carnival, the big show held each spring, when student-groups from different houses turn the Armory into a maze of side-shows, complete with barkers and dancing girls, each vying for the attention of the student-faculty crowd whose admission dimes are all given to the Campus Chest.

The Illini Union Board also cooperates with the Alumni Association in planning for the annual Founder's Day celebration held in the Union building, even to seeing that the knife is on hand for the cutting of the cake.

Mothers' Day is another big week-end on campus that has the Union for its sponsor. Mothers come to the Illini Union to register and learn of the many events planned for their week-end by the Union — Coffee Hours, the Union Musical, the Mothers'

20



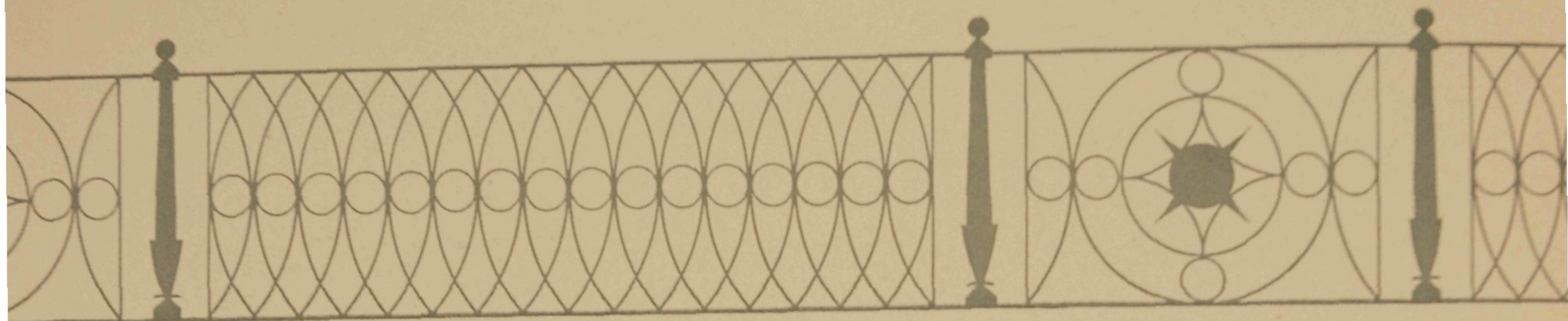
Association Meeting, the Mothers' Association Banquet, and the Coronation of the Mothers' Day Queen, presented, complete with military guard, on the Union Terrace.

But it doesn't have to be a special week-end to find the Illini Union building a center of student activity. The weekly bridge and chess clubs, the regular dances, the music programs, and the coffee hours — all these and more attract students to the Illini Union for an hour or an evening of the recreation of their choice.

21



A CENTER FOR SERVICE



Service facilities are inevitable in connection with an institution like the Illini Union. The thousands of students, faculty, townspeople, and guests who come into the Union to take part in its activities have to have a place to leave their coats. There has to be a place where people can buy tickets to the dances, concerts, and banquets. There has to be a comfortable place to sit, a place to entertain guests. So the Illini Union not only is a center for activities, but a center for service to all who enter its doors. What are the major services offered?

Almost any time of any day you can find someone at the *Ticket Selling* window on the main floor, purchasing tickets for some University or Union function. The service, which last year handled 116,469 tickets for 147 different events and took in \$71,303.09, is offered to student and staff organizations without charge.

A place to wait for an appointed meeting, a place to sit and read the paper, a place to rest — these are afforded by the Union's five excellently-furnished *Lounge Facilities*: the Main Lounge, the Wedgwood Room, and the Pine Lounge on the first floor; the Faculty Lounge and the General Lounge on the second floor.



"A Union, in the best sense, is not just a place to meet and a place to eat. It is not merely a building of any given kind. In the best sense . . . it is a well-considered plan for the social and cultural life of the college. . . ."
— Porter Butts, Director, Wisconsin Union





Some of the students who use the Wedgwood Lounge cluster in the corner near the phonograph listening to recordings. And they very likely have borrowed an album from among the more than 1,000 albums of popular, classical, and semi-classical recordings in the *Record Lending Library*. Last year over 9,000 albums were checked out from this library, located in the *Browsing Room*.

All of the more than 57,000 students who visited the Browsing Room during the past year, however, did not borrow records. Most relaxed and read books. The Browsing Room library of 1,350 volumes is a branch of the University of Illinois Main Library.

The Illini Union houses the University's *Central Telephone Switchboard* with its 30 incoming and 30 outgoing trunks, and its 1,790 University extensions. The Switchboard is in operation 24 hours a day. Another service of the Union is the *Information Office*, which last year averaged over 400 requests for information every day, and distributed over 100,000 timetables, maps, catalogs, and booklets. During the same period the office of *University Reservations* at the Illini Union assigned University space for other than academic purposes to 8,747 student, staff, and civic groups.





"The chief objectives [of the Illini Union] are to create actual situations which will teach students to make decisions, work out compromises, and develop a sense of responsibility." — G. W. Goble, Former Chairman of the Illini Union Board





Another important service of the Illini Union is to provide office space for activities. Not only are student activities housed in the Union, but the building is the gathering spot for returning alumni, with the *Alumni Association* offices, and the *University of Illinois Foundation* offices occupying a corner of the second floor. All the other services of the Union are available to alumni, and it is here that classes reunite and old acquaintance is not forgot.

Fourteen spacious and attractive *Guest Rooms* are also available for use by alumni, parents, and guests of the University. Last year these rooms accommodated 5,668 persons.

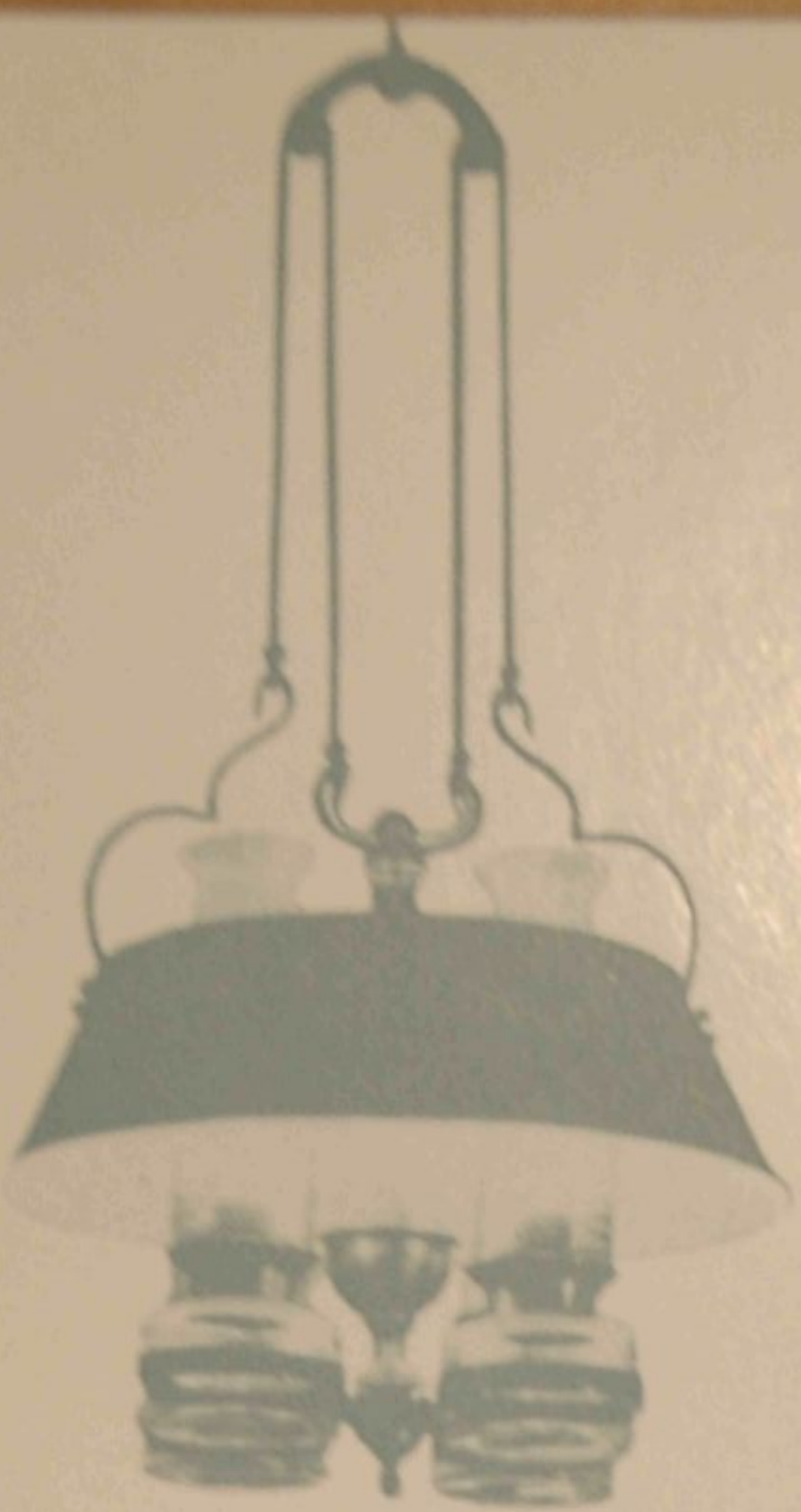
Service also includes many little things. If you lose something, or find something on University property, whom do you call? If you want to leave your briefcase or coat in a safe place, where do you go? Is there a place to buy cigarettes, candy, or newspapers? The Union provides these services.



Its *Lost and Found* service received 2,698 lost articles last year, and was able to return articles to 1,119 much relieved losers. The two *Checkrooms* handle thousands of coats, briefcases, umbrellas, and bulky packages every day. The *Main Desk* at the front entrance sells about \$25,000 worth of candy, cigarettes, chewing gum, cigars, newspapers, and magazines in a year. Over \$1,000 worth of bills are changed to smaller denominations there each week. It is the reception desk for the Illini Union.

27





For informal games, and for University-sponsored tournaments, the *Billiard Room* at the Illini Union offers nine tables for billiards, pool, and snooker. A team selected from the tournament winners represents the U. of I. in the National Intercollegiate Billiard Tournament. For those who like to play bridge, checkers, chess, or canasta, the Illini Union provides tables in the various lounges, and last year loaned out 4,350 decks of cards, 1,193 sets of chess men, and 451 checker boards from the Main Desk.



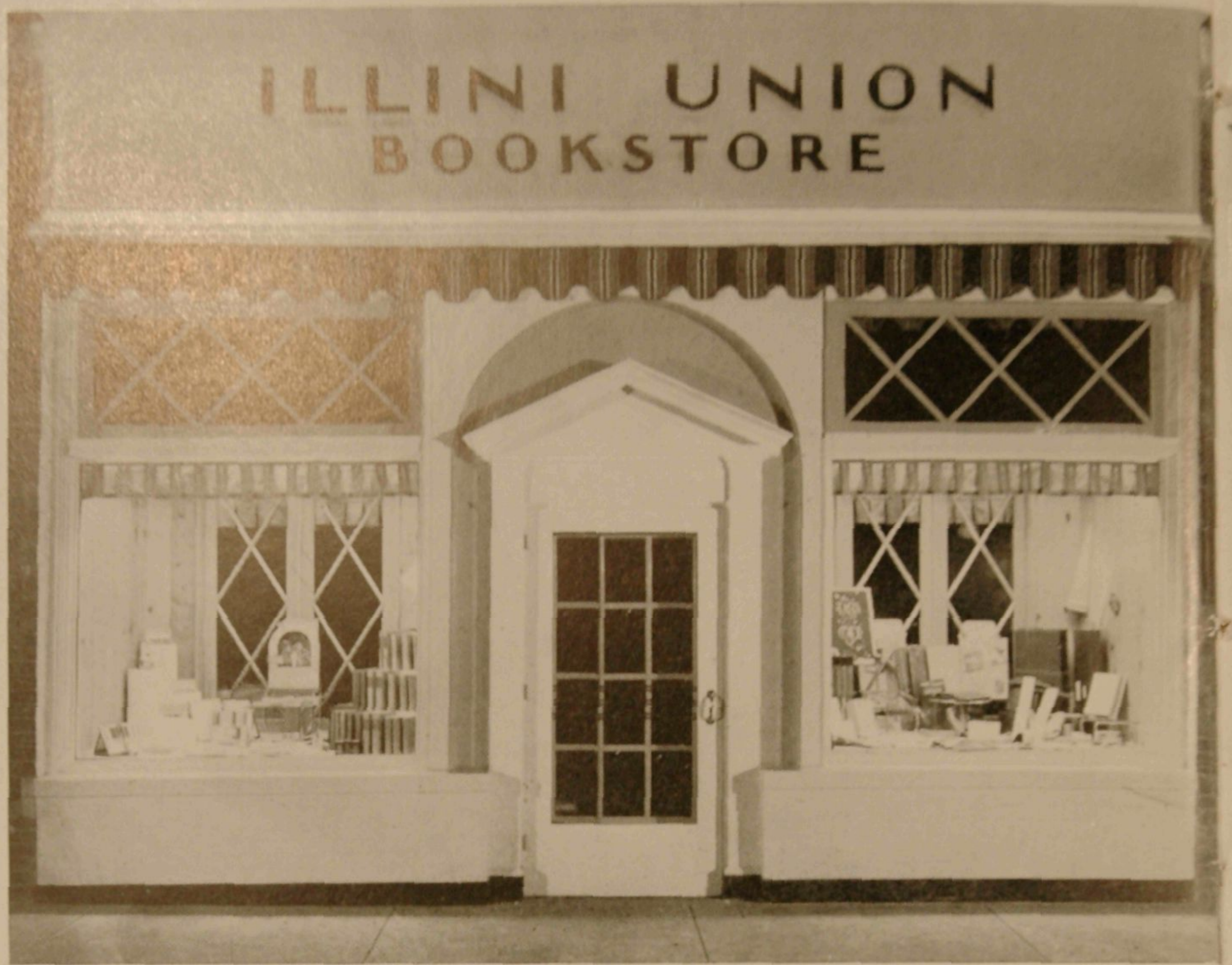
"A tired businessman trades off his worldly care for the problems of the chess board and returns to the desk to wonder where his major problems have disappeared." — Dean G. Ott Romney, West Virginia University



Over 110,000 lines were bowled on the Illini Union's eight constantly occupied *Bowling Alleys* during the past school year. The Union sponsored the first "Big 10" bowling meet in 1949, and won the championship. Intramural leagues, physical education classes, and U. of I. staff leagues use the alleys as a part of the regular academic and intramural program.

29





An especially important service of the Illini Union is the *Illini Union Bookstore* on Wright Street. Students who purchase their books and supplies here benefit from this cooperative enterprise by participating in the dividend distribution.

Also important is the dining service of the Illini Union. A dining room is available at the Union to suit the tastes of any person — for the student lounging or studying on the South Terrace, or for the occupant of one of the Guest Rooms; for formal or informal parties; for a full meal or a quick mid-morning snack.

On the south campus back of the Architecture Building and David Kinley Hall is the



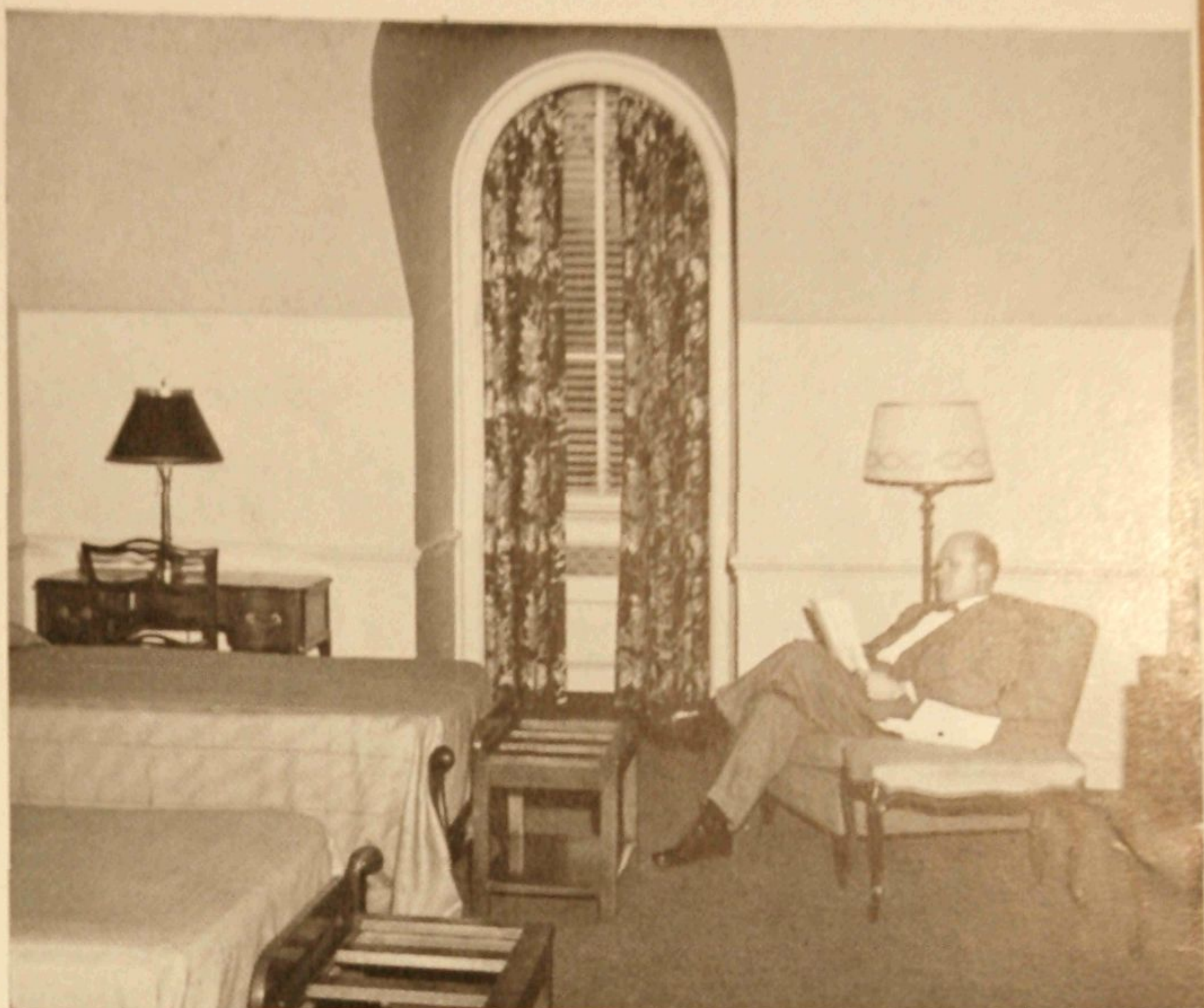
Illini Union Coffee House offering complete meal service and fountain facilities. At the Illini Union building itself are five regular eating spots — the beautiful *Colonial Room* where meals are served table d'hôte; and *The Commons*, *The Tavern*, *The Gothic Room*, and *The Federal Room*, where cafeteria service is available.

In addition there are six rooms on the third floor, plus one room just off the Colonial Room, where private dinners and banquets may be served. The huge *Ballroom* on the second floor may also be converted into a banquet hall, seating as many as 500 persons.

In the past ten years over 20-million meals have been served by the Union!

The ultimate aim of an institution like the Illini Union is not to offer a place to escape from the constant educational process going on at a great University; it is rather to augment that process. A center of student-staff activities and service is the place where learning is put to work, and information is exchanged in a natural and stimulating way.

Appropriately, the Illini Union provides for the bulk of meetings, conferences, receptions, and social functions held on the campus. Its rooms serve triple and quadruple duty each day, accommodating nearly 4,000 different events at which the estimated attendance reaches almost 250,000 in a year. About 65 per cent of these are student events, 15 per cent faculty, and 20 per cent University-sponsored short courses and adult group conferences. These figures attest to the ultimate educational function of the Illini Union's first decade.



The educational value of extracurricular activities is well established. They help the student to develop his character and personality. They help to discover individual talent that may be missed in the classroom.

Certainly studies come first and carry the top priority throughout the student's career. However, under good conditions the correlation between abstract learning and success in extracurricular activities is positive. As in many other pursuits, the hazard in outside activities lies in excessive indulgence and, to some extent, in unwise choices.

The Illini Union with its great variety of associated student enterprises is ideally set up to insure a balanced program for the student. It offers opportunities for participation that are unexcelled.

I note, for example, in a recent report of the Student Activities Division of the Union that no less than 38 different program activities are being maintained. In a single year the total attendance record for these functions was over 150,000. These activities include banquets, dances, discussion groups, film programs, games and tournaments, instructional programs, concerts, promotion activities, student shows, social and welfare services, parties and special events.

Now the sheer fun inherent in a party, a dance or a festival should not be undervalued. The human being does not live by bread alone nor by brain alone; as an all-round personality he needs to pay attention to the social and emotional sides of his life. At the same time the responsibility involved in setting up these programs is a good experience in co-operation. Many a student learns, perhaps for the first time, that nothing gets done by itself. It demands more than a casually shared interest to develop and maintain a successful recreational program. Interest and enthusiasm need to be linked to planning and execution—a useful lesson throughout life.

In all such matters the Illini Union is well set up and beautifully housed. Students, faculty, alumni and campus visitors all give it tangible support and appreciation.

The Illini Union is an integral part of the University of Illinois. The University would be impoverished without its unique educational and social helpfulness. Therefore, we salute the Illini Union on its tenth anniversary of service to every member of the University family. May it continue to grow in the richness of its offerings to young and old, to newcomer and elder citizen!

GEORGE D. STODDARD, PRESIDENT OF THE UNIVERSITY

The foregoing résumé of activities and services from 1941 to 1951 recounts how the Illini Union, during its first ten years, has profoundly influenced the life of the University community. In addition to providing many opportunities for recreational, social, and cultural experiences to the students and staff, the Illini Union has also served the alumni and friends of the University, and on many occasions, the people of the state at large. We are grateful to those who gave so generously of their time and efforts, and to those who provided for the furnishings and equipment of the building, for having brought to the University an asset of such value and distinction.

The Illini Union has fulfilled many needs of the college community. However, with enrollment considerably higher than at the time the building was planned, almost every facility is overtaxed. Each year has seen an increase in activity within the building. With every indication that University enrollments will continue at a high level over the long term, there will be need for expansion. Although this may not be possible in the near future, consideration is being given to an addition to present facilities which will permit an increased sphere of activities and service. In the meantime, the Illini Union will continue to serve the University community to the fullest extent of its available facilities.

THE ILLINI UNION BOARD

This booklet was designed under the direction of Ralph Eckerstrom. Photographs are by the Perry Gliessman Studios; Hedrich-Blessing, Ltd., and Illini Flash Studios. Text and editorial supervision are by staff members of the University of Illinois Press.