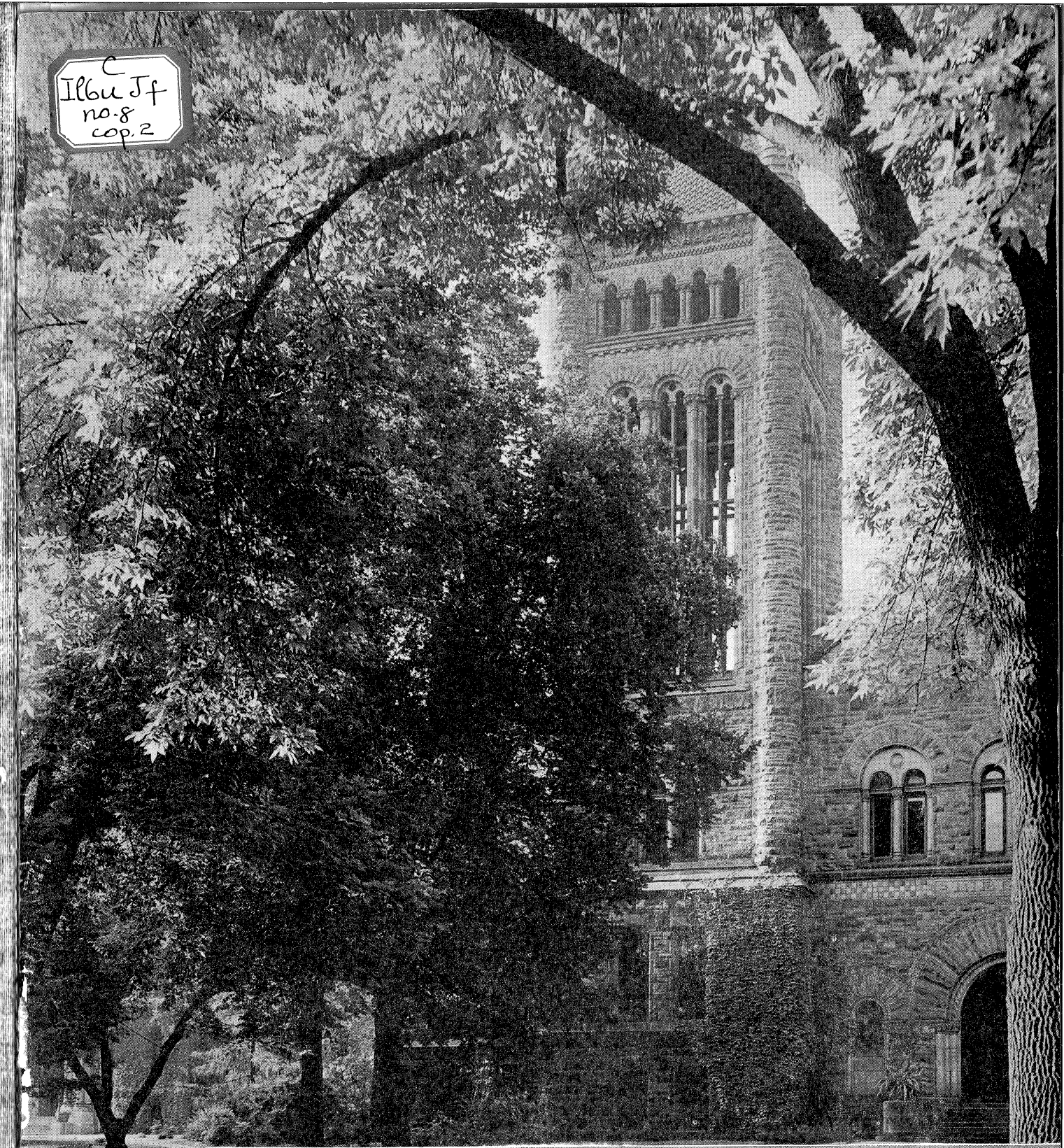


Ilbu Jf
no. 8
cop. 2



1937
A Greater Illinois

Institute
Institute
Institute Research

units of the State
the entire Polk
and 3 at
State Department

Chicago, although if
the ball
might have been
however, a
group and,
every opposing
by injuries
gave a good
spectacu-
with Southern
by a score
The most
to 0 loss to
of the Big
battled their
their line
but a
Ohio State
and except
blocked
Zupple
the master
Club of
for

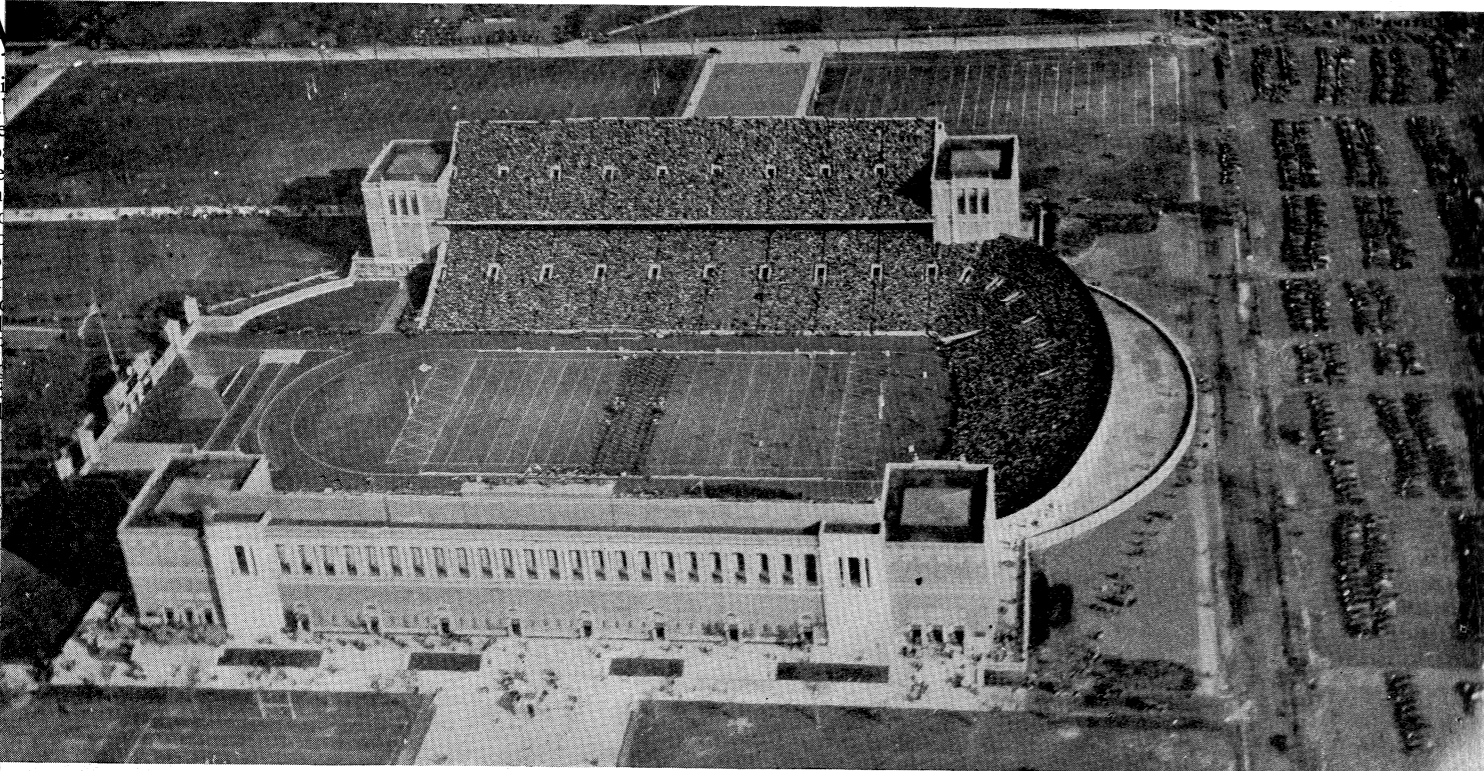
Bulletin
11.
Illinois,
the
1.



ALUMNI GIFTS MADE THESE MEMORIALS POSSIBLE

TAFT ALMA MATER STATUE. The central figure, Alma Mater, in the presence of Learning and Labor, greeting the children of Illinois. Made possible through gifts by the late Lorado Taft, '79, the sculptor, the graduating classes of '23-'29, and the alumni. Dedicated in 1929, on the fiftieth anniversary of Dr. Taft's graduation

MEMORIAL STADIUM filled to capacity (69,000) at its dedication in 1924. This structure is finished in brick and stone. Two hundred columns, dedicated to students and alumni who died in the World War, form colonnades along the outside of both stands. A gift of alumni, students and other friends



UNIVERSITY OF ILLINOIS BULLETIN

Published twice a week.
Eighth Foundation Number.
Vol. XXXIV, No. 65 Tuesday, April 13, 1937.

Entered as second-class matter December 11, 1912, at the post office at Urbana, Illinois, under the Act of August 24, 1912. Acceptance for mailing at the special rate of postage provided for in section 1103, Act of October 3, 1917, authorized July 31, 1918.

YOUR UNIVERSITY

C
IlGu Jf
no. 8
cop. 2

LORADO TAFT, internationally known sculptor; Samuel W. Stratton, President of the Massachusetts Institute of Technology; Samuel W. Parr, chemist; James R. Mann, statesman; Henry Bacon, designer of the Lincoln Memorial in Washington, D. C.; Nathan C. Ricker, architect; J. A. Ockerson, river engineer; Ira O. Baker, engineering education; James Newton Matthews, poet; Thomas Arkle Clark, Dean of Men; George Huff and Jake Stahl, sportsmen; and others!

You, an alumnus of the University of Illinois, what have been your feelings as you read this list of names? Familiar names? Yes. Then has the realization come to you, suddenly perhaps, that these are names of men who have been your fellow alumni at the University of Illinois? That Lorado Taft, internationally known sculptor, is Lorado Taft, Illinois, '79? That all these distinguished men who have passed on have in common with you their Alma Mater, the University of Illinois?

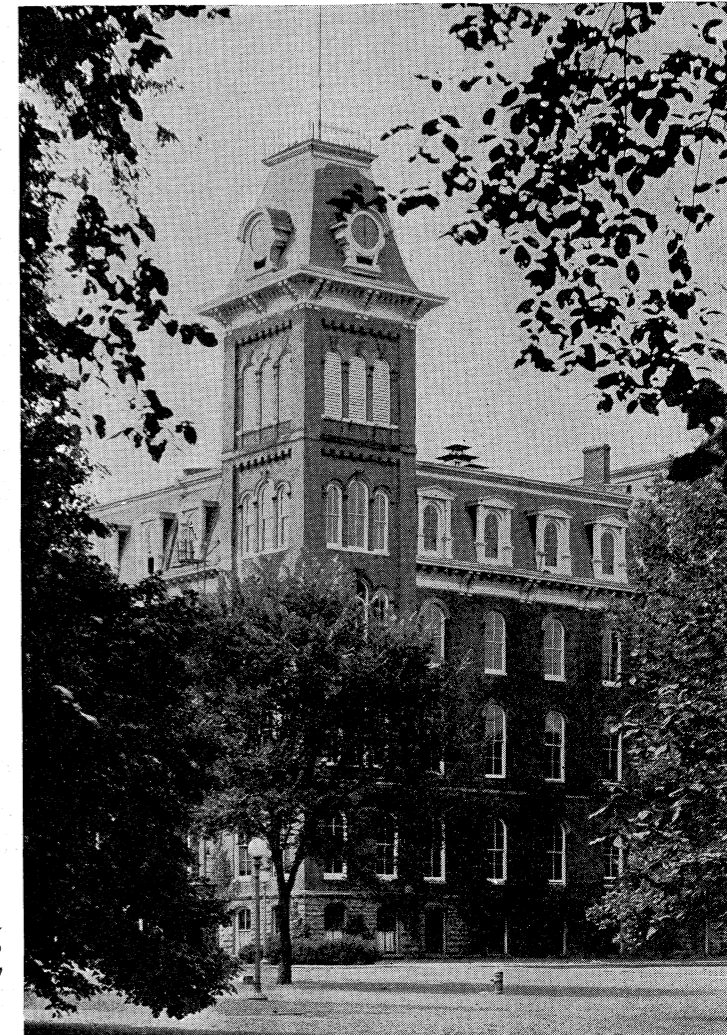
After all, pride in achievement is pardonable. And you can take pride in the achievements of your fellow alumni.* With the alumni body of your University exceeded in size by those of only two other universities, what opportunity for achievement exists!

"The University of Illinois is a vast laboratory of science and citizenship, built by and for the people of Illinois. Its discoveries are always at the world's service and the whole world seeks its service. The University is always doing something that compels the wide world to take notice. Having done that, it imparts the fact with a laconic touch which in an age of glamorous exploitation is like the touch of a cool, steady hand. One-fourth of this University's income goes into research and approximately the same amount of the faculty's energy. That is what makes it a university of world rank instead of a kind of collegiate department store."

When James O'Donnell Bennett wrote this after a visit to the campus, he evidently felt the same glow of admiration and pride in the State University that you alumni have when you think of it and of the men and women who have made it great.

*It would be impossible to list in this booklet the names and positions of all the noted living graduates of the University. For example, there are the presidents of four great universities, faculty men and research workers in practically every college and university in the country, leaders in business, industry, the professions, in every walk of life. You will find fellow alumni outstanding in every community.

University Hall, patriarch of the campus. From 1873 to 1893 this was the University



Our University is really a young university. It is only sixty-nine years old.* From fifty students, three faculty members, and one building in 1868, it has grown today to approximately 13,000 students, including the Chicago colleges, a staff of 1,700, and a \$30,000,000 plant including some eighty-one major buildings.† Little wonder that the dean of an eastern college, which has a record covering a life span of nearly three centuries, said recently, "When I see what you have done in sixty-nine years and compare your accomplishments with ours in 300 years, I can see that the future of higher education is no longer centered in the eastern institutions." And to prove his statement, he pointed to the fact that a report of the American Council on Education for 1934 has ranked Illinois among the first ten of sixty-two universities in the country in point of academic greatness; that is, in the eminence of its teaching and research.

All of which is impressive. But if you are like most alumni of the University, mere bigness, mere size, mere rating by educational associations, mere numbers of buildings and students and faculty, are not enough. You want to know what the University has done. What has it accomplished in these sixty-nine years? What are some other values?

In research, for instance, the equivalent of millions of dollars is annually given back to the State and nation in the form of returns on the investment in the University. One friend said that the value of these discoveries "approximates many millions of dollars a year, certainly many times the amount the State appropriates for all purposes—teaching, research, and building." A prominent industrialist spoke of one research project in engineering which meant "ten millions of dollars annually in the Chicago area alone"; and one agricultural project is "worth twenty-nine millions annually."

The University's research,‡ which covers practically the whole field of human endeavor,

*Harvard College is 300 years old, the University of Michigan 120 years, and the University of Indiana, 117.

†Illinois ranks fourth among the universities of America in the number of full-time students, and fifth in the number of books in the library (1,052,684). It ranks first among state universities in size of library.

‡Awards last year to University of Illinois faculty men for research included the F. Paul Anderson Gold Medal for distinguished service to President A. C. Willard; the John Fritz Medal (highest award in engineering), to Prof. A. N. Talbot, '81, by the National Societies of Civil, Mechanical, Electrical, and Mining and Metallurgical Engineers; the Wason Medal from the American Concrete Institute, to Prof. Hardy Cross; the Willard Gibbs Medal, by the Chicago Chemical Society, to Prof. Roger Adams; the J. James R. Croes Medal of the Society of Civil Engineers, to Prof. W. M. Wilson.

Illinois ranks fourth among 456 American and 49 foreign universities in the number of graduates whose biographies appear in the latest edition of "Chemical Who's Who."

Engineering Hall, which houses the executive offices of the College of Engineering as well as many of the departments of the college. The engineering group includes thirteen fine buildings



has produced results which touch the lives of almost everyone, often in everyday ways not realized.

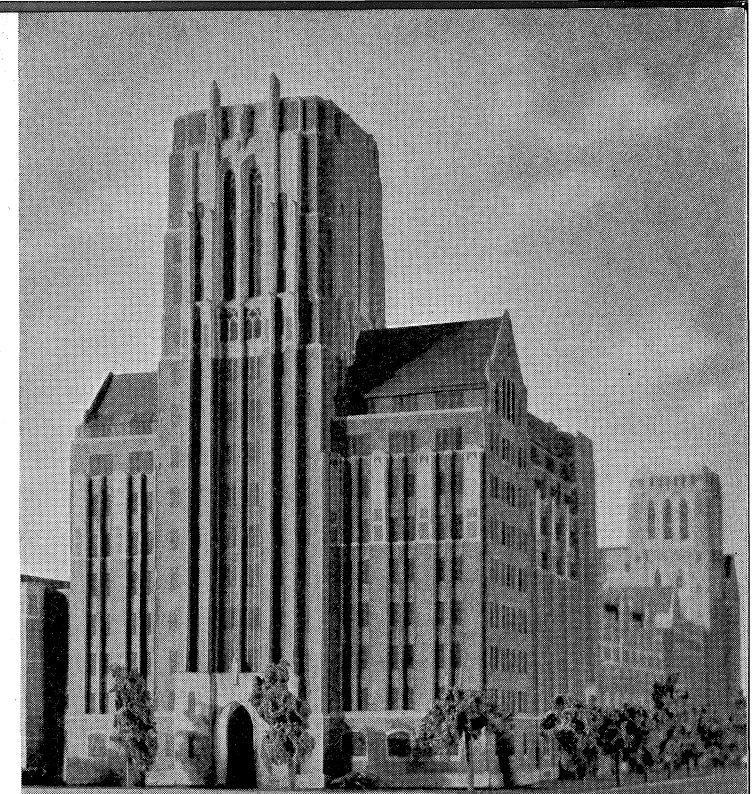
Alumni will never forget that day in March in 1926 when the University announced the discovery of "Illinium," the first chemical element ever discovered by anyone in the Western Hemisphere. This is only one of many of the great achievements of the University. Here also were discovered one of the amino acids essential to life; the virus causing ptomaine poisoning and an anti-toxin to combat it; synthetic chaulmoogric oil, used in the treatment of leprosy; "Illium," a platinum substitute; and a process by which the life of steam boilers in alkaline water communities is increased from three or four years to twenty or thirty.

No one department has failed to contribute to the world's knowledge. Perhaps the most spectacular contributions have been those of the College of Engineering, a few of which are: Research in plain and reinforced concrete, which has revolutionized concrete design all over the world; new truths discovered regarding warm air, steam and hot water heating systems, storm windows and doors, refrigeration and year-round air conditioning; solution of ventilating problems of the Holland Tunnel, connecting New York and New Jersey (system later adopted for the Mersey Tube in England); bridges and highways made safer; research in freight car wheel failure, resulting in complete change of design; tonnage rates for locomotive hauls; fatigue of metals research, aiding in prevention of disasters such as railroad wrecks, broken elevator cables, snapping of auto steering knuckles and springs, and great improvements in high-tension electrical transmission. The first engineering experiment station in the United States, the first educational shop laboratory, and the first department of railway engineering, were established in connection with the College of Engineering at the University.

In another important field, equally valuable have been the discoveries of the College of Agriculture, which have been of incalculable value to farmers. Some of these are: The "Illinois System of Soil Fertility," which was even transplanted to Greece during the World War, whereby worn-out soils are restored and new soils kept from deterioration; the Illinois Soil Survey, whereby any farm in any county in the State can be known and purchased on the basis of "what the soil contains"; the oldest soil experimental plots in America; the oldest line of corn breeding in the world; and comprehensive research in the soybean industry.

Founded originally as an agricultural and mechanical college, the broad character of the University's activities can also be shown by its accomplishments in fields outside of agriculture and engineering.

Faculty members in the College of Law have been instrumental in drafting the new Illinois Insurance Code, the new Illinois Civil Practice Act, the new Illinois Code of Criminal Law and Procedure. University of Illinois architects and planners lead their professions throughout the country. The College of Commerce is looked to by the business interests of the State as logical leaders in eliminating waste and misunderstanding. The work of the Department



Architect's drawing of the new Medical and Dental Laboratories Building now nearing completion on the Chicago campus. Along the Polk Street front will be seen other units of the medical building with the tower in the distance. The new unit cost \$1,400,000 without equipment



George Huff Gymnasium, so named by the Board of Trustees as a tribute to the memory of Illinois' famous athletic director

of English in Shakespeare has been termed by British commentary as the most important to come from America, and its research work on Milton is generally recognized as the most important in the world today. The training of classical scholars, the work in the Scandinavian languages and culture, the leadership in political science, and research work in mathematics are universally recognized and world famous.

And don't forget that research is in addition to its teaching, its extension work and the various other activities of this great university. Research, besides its contributions to human welfare, is valuable in that it provides new facts and a stimulus to teaching.

Of a different character, but important in the educational field, was the establishment at the University of the first offices of the deans of men and of women. These two offices were the forerunners of the many phases of personnel work so prevalent now in colleges and universities. The College of Liberal Arts and Sciences is today a leader among state universities in individualized education through the development of a tutorial system.

There are so many things in the everyday life of the alumnus which he takes for granted that he often fails to give credit to, and personally take pride in, his Alma Mater.

ILLINOIS MARCHES ON

SO MUCH for some of the things the University of Illinois has accomplished. Now for some things we have to do. We do not have, for instance, as many universities do, a permanent system for alumni giving, a system which will build up a fund to be drawn upon from time to time as needed for such things as:

- | | |
|--|--|
| (1) A new Union Building. | ships of this type, more and more of our best students will be drawn to other institutions.) |
| (2) Scholarships, particularly those of sufficient value to pay all expenses, leaving students free to make the most of their educations. (Unless Illinois and other midwest universities set up more scholar- | (3) Endowed professorships. |
| | (4) Commercial development of important discoveries. |
| | (5) Works of art, museums, memorials. |

* For more complete statements see the booklet, "Your First Year at Illinois"; also the general University catalog. Copies gladly sent free.

To be sure, there has been in the past alumni giving, the most notable example of which was the \$2,000,000 for the Memorial Stadium. However, after the Stadium campaign was over, enthusiasm waned because there was no definite objective, there was no continuing effort to keep the alumni interested.

Even so, that campaign did more than build the Stadium. It awakened and inspired the interest of our alumni, it increased the prestige of the University with the general public, and it attracted better students to our doors. The effect of this renewed interest was felt for several years. A review of the accomplishments of these years led to a decision to create a more permanent and comprehensive system of giving, in which all alumni and friends of the University could cooperate.

The Illini Plan of Coordination was born.

Its broad program, successfully launched among the alumni in two hundred communities in the nation, has, among others, two essential and permanent objectives. The first is a matter of service to high school students, to inform them properly about their State University, what it has for them, and the opportunities it offers; the second is the creation of an Illini Foundation Fund which will make possible the realization of the needs heretofore mentioned.

As President Ekblaw of the University of Illinois Alumni Association said at the 1937 Founders' Day broadcast: "Powerful and confident in its youthful strength, Illinois will stride forward to accomplishments yet undreamed of if every individual one of you will take some specific interest, do some one particular thing, for your Alma Mater, and do that thing with earnestness, with determination, and with consistent effort."

ILLINI FOUNDATION FUND NOW ESTABLISHED

AS PREVIOUSLY mentioned, two permanent objectives have emerged from the many discussions of the Illini Plan of Coordination: Service to high school students, and the establishment of the Illini Foundation Fund.

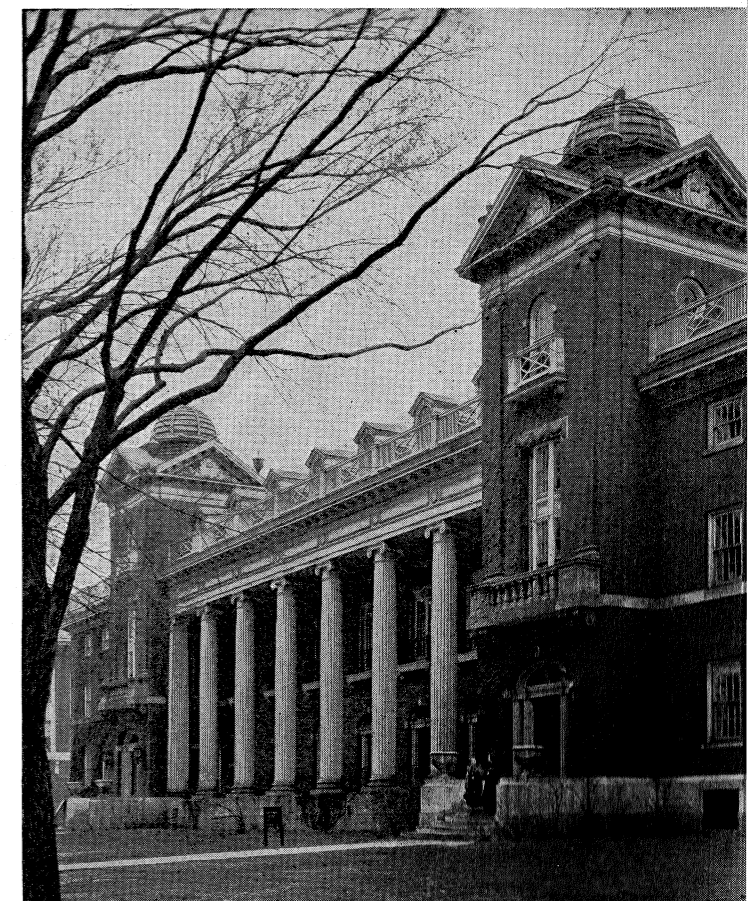
This second objective will look toward the building of the new Union Building, the creation of scholarships, and other worthy projects to be decided upon after careful consideration by the University Foundation Board, and consultation with University authorities.

The organization and campaign work in connection with the Foundation Fund will be handled by the Gifts and Endowment Committee, which will report to the University Foundation, the trustee of the Fund.

The University of Illinois Foundation was created for just such purposes as this. Its constitution says:

"To assist in developing and increasing the facilities of the University of Illinois for

Woman's Building—Houses Home Economics, the Dean of Women and other activities. Swimming classes are still held there. Built in 1905, with additions in 1912 and 1923



broader educational opportunities for, and service to, its students and alumni and to the citizens of the State of Illinois by encouraging gifts of money, property, etc. . . . ; to receive, hold and administer such gifts . . . , and to do such other acts and undertake such other enterprises as in the judgment of the Board of Directors shall tend to promote the interests and welfare of the University of Illinois."

The University of Illinois Foundation is a non-profit corporation of the State of Illinois. Since a majority of the members of the Board of Directors are alumni elected by the Board of Directors of the Alumni Association, and since these latter are in turn elected by the members of the Association, the Foundation is your agent, an Illini Chest, to do the things which will most benefit our Alma Mater.

PRESIDENT WILLARD ENDORSES ILLINI PLAN

"FROM its modest beginning on March 2, 1868, with fifty students and three members of the faculty, the University has developed into one of the leading state universities of the country, with a history of public service of which its more than 132,000 alumni, both graduates and former students, may well be proud. The University, by the same token, has reason to be proud of its alumni. No institution has been more fortunate than the University of Illinois in the unfailing loyalty and support it has received from its alumni body. The Illini spirit has become a national tradition.

"True to this tradition and with characteristic enthusiasm the alumni have lately launched a well-conceived plan of assistance to the University which has my hearty approval.

The Library, the heart of the University, was built in three units from 1924 to 1929 and houses over a million volumes. This building also houses the Library School



Its objective of continuous alumni activity in many communities cannot fail to stimulate that reciprocal interest between the University and its alumni which is so important to the institution. One of the objectives of this plan is the creation and maintenance of a permanent fund to assist the development of the University and to improve its educational and scientific work in various ways. Among the University's needs are: A Union Building; endowments for scholarships to aid undergraduate students of superior scholastic ability and possessing those qualities of character which make for leadership; endowments of professorships; and other provisions. I should like to discuss briefly the need for a Union Building.

"The University student body, together with the members of the administrative, technical, and instructional staff, comprises more than 13,500 individuals who have no single, common social or campus community center open and available to all, regardless of membership in fraternities or sororities, or any other organized association. There are no headquarters for visiting alumni, or for the hundreds of mothers and fathers who visit the University both before and after their sons and daughters become students, to say nothing of other daily visitors.

"As a result, the lack of a student and faculty social center in such a large institution as the University of Illinois has become, in my opinion, a major problem, demanding the serious consideration of all university officials, alumni, and friends of the institution. For more than twenty-five years, beginning with President Edmund Janes James, such a project as a 'Union Building,' the usual designation for a student, faculty, and alumni social center, has been under discussion at the University of Illinois. During this period, practically every large university in our mid-continent area has successfully financed and built such a building.

"In the present situation, the University of Illinois is not only at a distinct disadvantage among other mid-continent universities, but also is not serving its students, faculty, and alumni in an important field now generally recognized as an essential function of modern university life and administration.

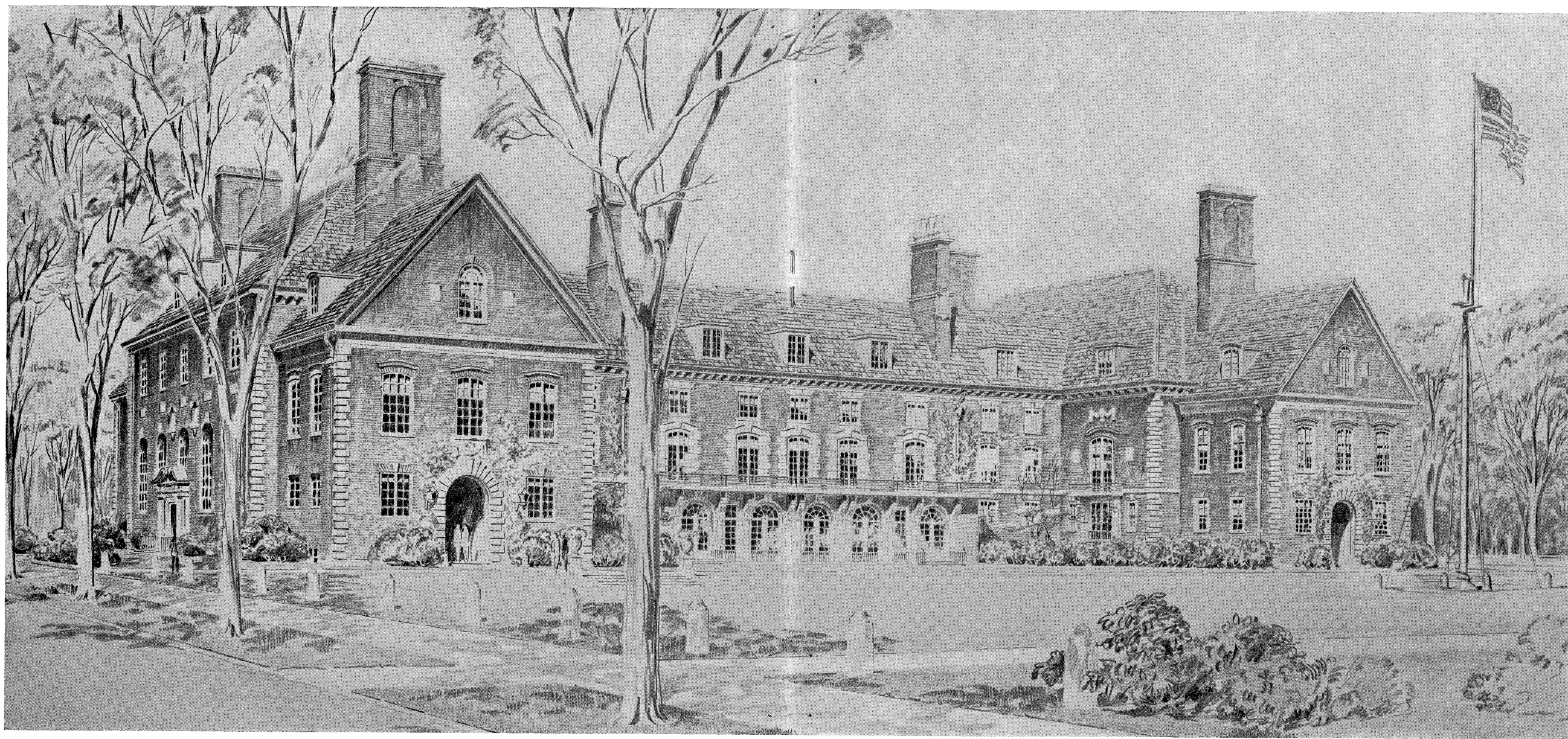
"In the matter of endowed scholarships, the University is at a great disadvantage. Many of the best graduates of the high schools in Illinois are being attracted to other institutions because these institutions are awarding valuable scholarships to Illinois high school students of unusual ability. Such individuals raise the intellectual level of the undergraduate student body, thereby making it possible for the faculty to improve the instructional work of the University, and develop stronger courses and superior graduates. Students of superior scholarship enhance the prestige of an institution just as outstanding scholars and scientists bring distinction to its faculty.

"Therefore, as President of the University, I commend the Illini Foundation Fund and its objective to your attention, with the confidence that they will receive the careful consideration they deserve."

A. C. Willard
President



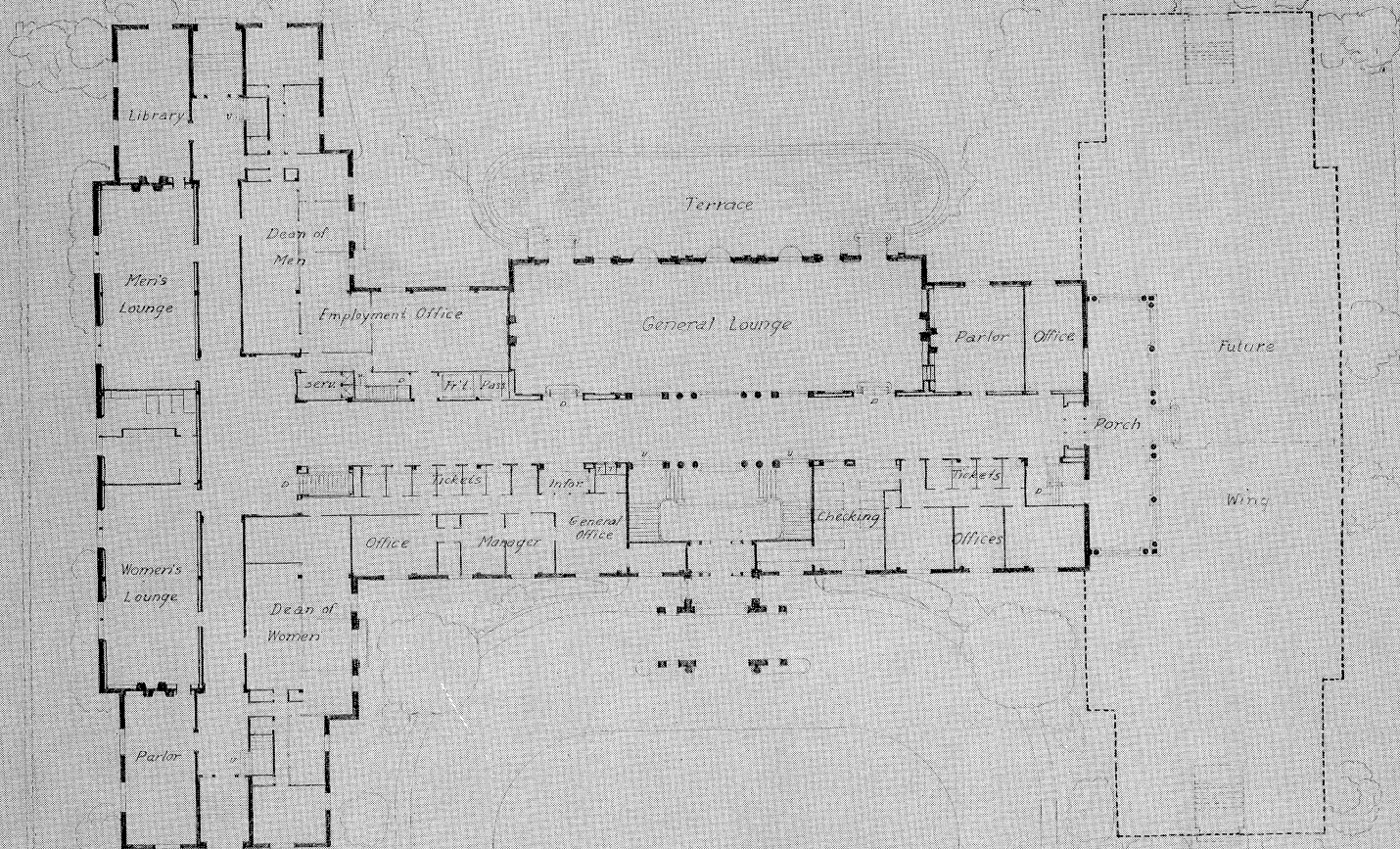
Dr. Arthur Cutts Willard



TENTATIVE ELEVATION OF NEW ILLINI UNION

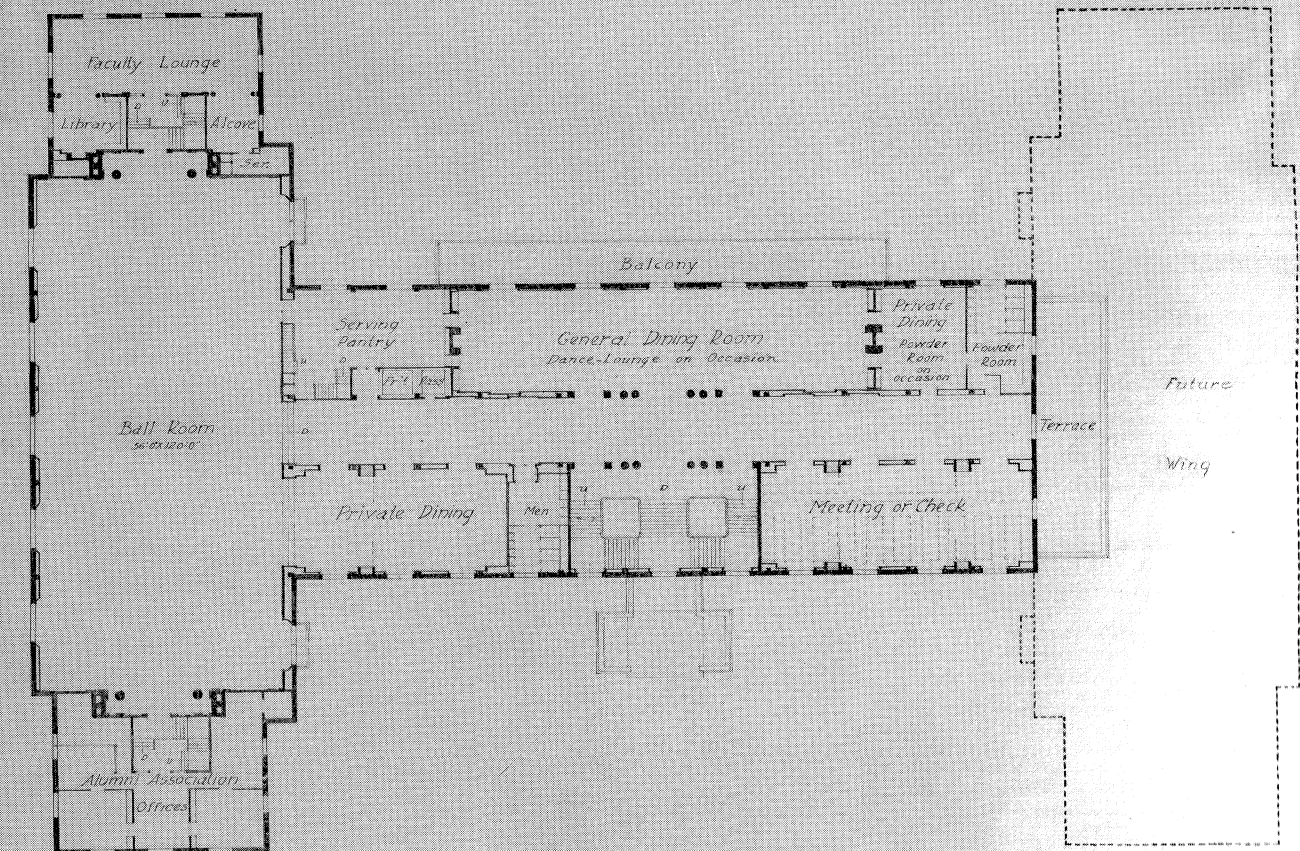
WELL, here it is! A real Illini Union! A Union designed especially to meet conditions as they are at Illinois and to serve the University in the best possible way. The building pictured here, in the Georgian style of architecture adopted for new University buildings, is one of several for which designs have been developed. While other ideas may suggest themselves, of one thing we can be sure: the Union is to be a structure of which all will be proud. The final result will be the product of several years of careful study and investigation, which has included visits to and studies of practically every Union building in the country.

Obviously, the interiors of Union buildings are more or less definitely standardized, certain basic ideas being found in all of them. These ideas are of course included in the design of the Illini Union. A study of the plans presented here will reveal the accommodations to be generous and suitable to Illini, and as spacious and as inclusive as any in the country. Remembering that changes may grow out of further planning, let us glance at the plans to see how our Illini Union is arranged; the illustration on this page, with the floor plans following, will give you a good idea of the progress already made.



TENTATIVE FIRST FLOOR PLAN

A general lounge, of impressive size, is a feature, with auxiliary lounges, off the main lobby, for men and for women. These are for informal assembly, for study, and for rest and relaxation. Plans have also been made to provide offices for the Dean of Men and the Dean of Women and their staff; executive offices for the Alumni Association, the University Foundation, the Student Alumni Association, and other general organizations, such as the Men's Illinois Union; Women's League; Women's Group System; Independent Council; Student Senate; Concert and Entertainment Board, and student publications. In addition, ample provision is made for rooms for special student groups and committees, for exclusive or joint use, and for booths for ticket sales for University events and functions.

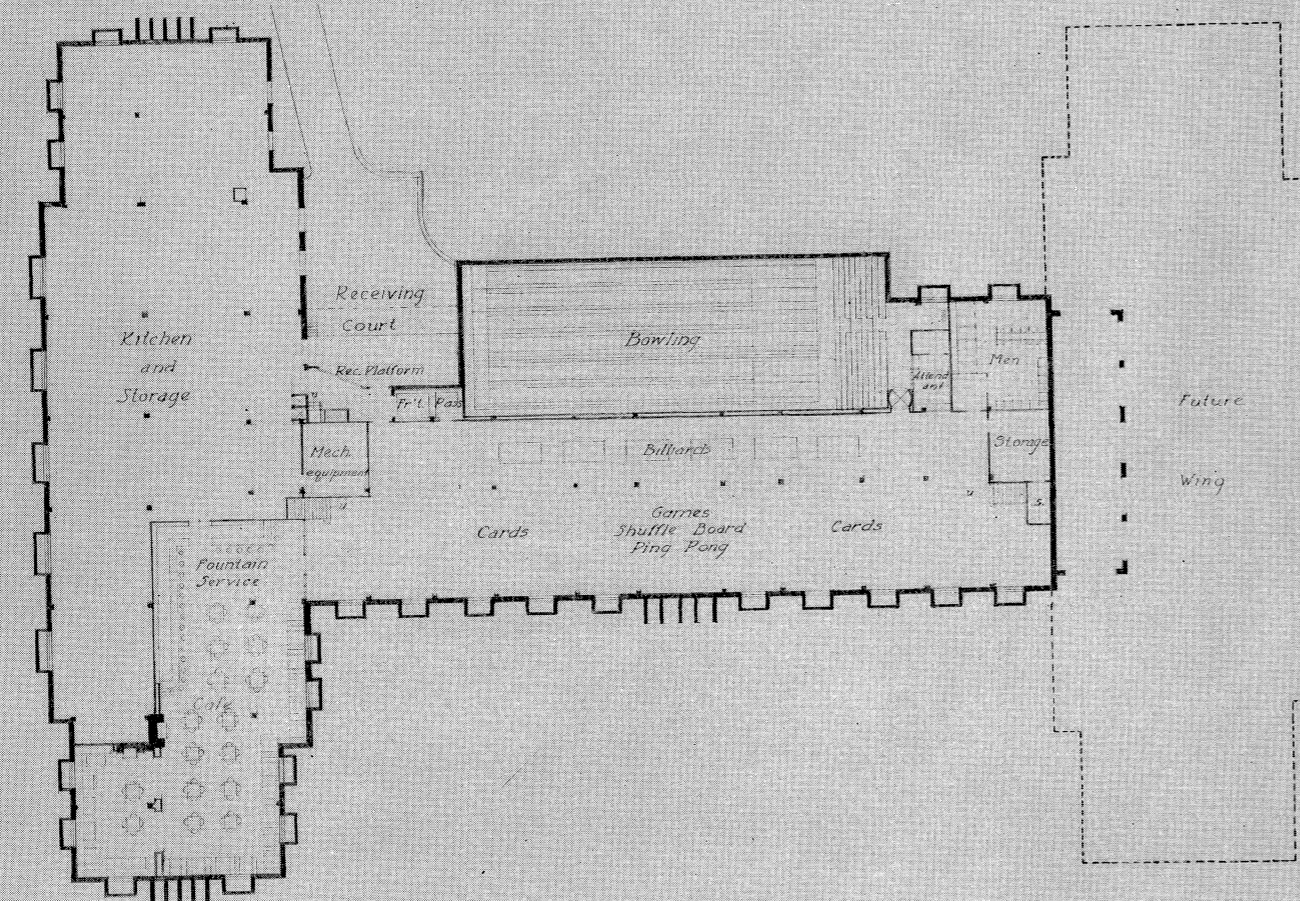


TENTATIVE SECOND FLOOR PLAN

Accommodations for meeting the requirements of student social life include a ballroom with a dance capacity of perhaps 400 couples. So designed as to be used also as an assembly room or banquet room, it will seat 1,000 persons or accommodate 800 diners.

Additional dining requirements are met by a large general dining hall, where will be served food of good quality, at moderate cost, probably with student service; several smaller dining rooms for special groups, usable also for peak load occasions; and soda fountain and grill. Provision is also made for kitchen service to meet peak load needs.

Game rooms, so popular in other Unions, provide facilities for bowling, billiards and ping pong, as well as the quieter relaxations of chess, checkers and cards.



TENTATIVE BASEMENT PLAN

A number of sleeping rooms are included in the plan. These will be available to University guests, alumni, parents of students, and others connected with the University. This is in accordance with the practice at other universities.

Throughout all consideration of the design of the Union, there has been kept in mind the thought of unifying the student body through better and more general social contacts than the University has ever been able to provide in the past; of fostering student and faculty association; and of providing, for returning alumni, for parents, and for friends of the University, a place where they may feel at home.

That, indeed, is the Illini Union: not an institution, but a home—for Illini and their friends.

OTHER UNIONS

THE college and university Union idea goes back more than 100 years in the case of Oxford, forty-one years in the case of Houston Hall at the University of Pennsylvania, the first Union in the United States. The Reynolds Club of the University of Chicago and Brown Union of Brown University started in 1903. The Harvard Union was organized probably about the same time. In all there are forty Unions in the universities and colleges of the country, most of them organized in the last fifteen years.

The Oxford Union Society had its beginning in the "Attic Society," founded in 1821 by Augustus Hare. It was first a debating society; the founder's idea was a "miniature parliament." The name was changed to "Oxford Union Society" in 1825. Down through the years the Society has held its standards high. Mr. Gladstone, Lord Salisbury and Mr. Asquith, three of England's most famous premiers, were presidents of the Society in their student days.

Oxford Union has expanded with the years and has taken a prominent part in promoting the social life of the University. It still maintains the debate as one of its functions.

The first Union in our own country, Houston Hall at the University of Pennsylvania, was established in 1896 by Mr. and Mrs. Henry H. Houston as a memorial to their son. In 1904 every male student of the University automatically became a member; part of his fees were allocated to Houston Hall. Since 1924 all fees have been removed, and the building is now practically self-supporting. Today Houston Hall is considered badly outgrown. New plans call for two wings, which will more than double the capacity.

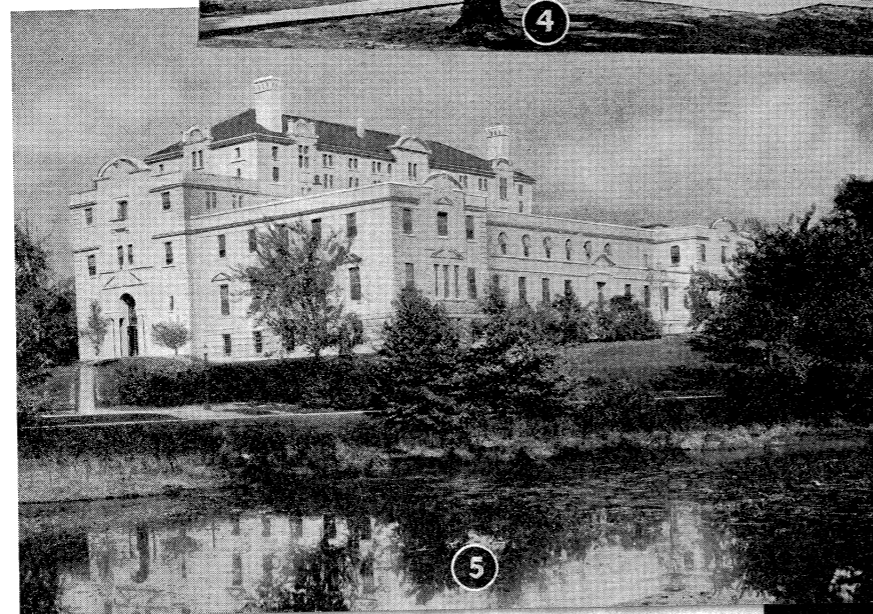
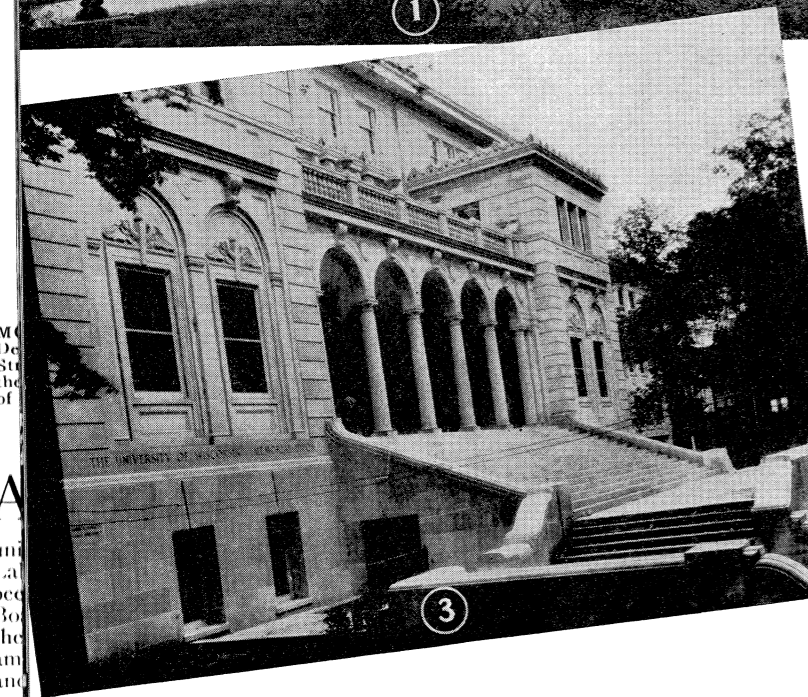
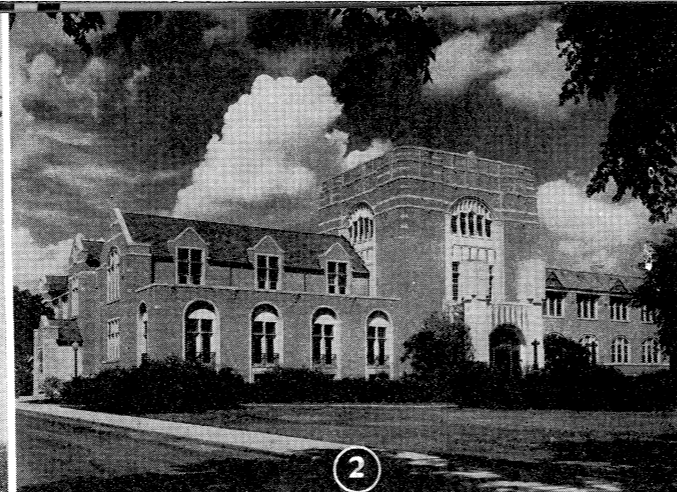
In our western universities, especially the state institutions, the Union idea has taken root and developed a remarkably strong growth. The oldest of these, at Michigan, built in 1916, is exclusively a men's Union. The women at Michigan have a building of their own. Both of these were financed mainly by alumni subscriptions.

At both Purdue and Indiana have been erected monumental structures for Union purposes. Although comparatively new, both Unions have already firmly established themselves as indispensable. Wisconsin has a splendid Union, built in 1928, and already too small. Iowa University and Iowa State College are equipped with excellent Union buildings. Minnesota is making plans for a large new structure to augment its present accommodations.

At all these institutions the Unions render signal service, as told in letters which follow.

Lounge of Iowa Union, built in 1930; a glorious room 90x144





OTHER UNION BUILDINGS

- 1 Michigan Union for Men, built in 1916, cost \$1,545,000.
- 2 Purdue Union, a well-organized and much-used building, built in 1924, cost \$1,185,000.
- 3 Wisconsin Union, built in 1928, cost \$1,320,000. Another wing costing \$500,000 projected.
- 4 Indiana Union, built in 1932, cost \$832,000. Additions contemplated.
- 5 Iowa State Union, built about 1930, cost \$829,000. Extra construction contemplated.

UNION BUILDINGS ARE NECESSARY SAY PRESIDENTS OF NEIGHBORING UNIVERSITIES

President Alexander G. Ruthven, University of Michigan:

"Now that the Michigan Union has been in operation for nearly eighteen years, it is difficult indeed to say how we could possibly get along without it. Its primary purpose, of course, is to serve as a social center for the men students of the University, which it admirably does.

"I am sure that not only the University but also the entire community would agree with me in saying that the Michigan Union is an indispensable asset."

President Edward C. Elliott, Purdue University:

"The Purdue Memorial Union Building has been in operation for more than twelve years. Each of the years has added to the convincing evidence of the worth of the Union to the entire University. The Union is a unifying influence to the University, not only internally but also externally."

President L. D. Coffman, University of Minnesota:

"Going to college involves far more than merely attending classes. Some of the most important educational values are acquired through participation in the somewhat intangible, but nevertheless important, round of activities that are grouped together under the term 'student life.' An adequate student Union is essential in the development of a rich, full-rounded student life. It is recognition of this that is leading us at Minnesota to make plans for the erection of a new student Union."

Acting President G. C. Sellery, University of Wisconsin:

"The service of the Union to the Wisconsin campus might be told in terms of the 5,000 to 6,000 students, faculty, and alumni who use it each day as a supplement to their living quarters.

"It is one of the instrumentalities which is helping to restore the personal relations between students, and between students and teachers, which once graced and strengthened education in the smaller college."

President E. A. Gilmore, University of Iowa:

"The Iowa Union has come to serve such an important place in the life of the University of Iowa campus that the most frequent comment about it now is, 'How did we ever get along without the Union!' It is in every sense the social center for the entire campus—both faculty and students. One of the major contributions and services of our Union is the opportunity it offers for the integration of student activities."

President William Lowe Bryan, Indiana University:

"The Union Building at Indiana University is judged by impartial and discerning persons to be a first-rate architectural success. The life of the University flows through it every day.

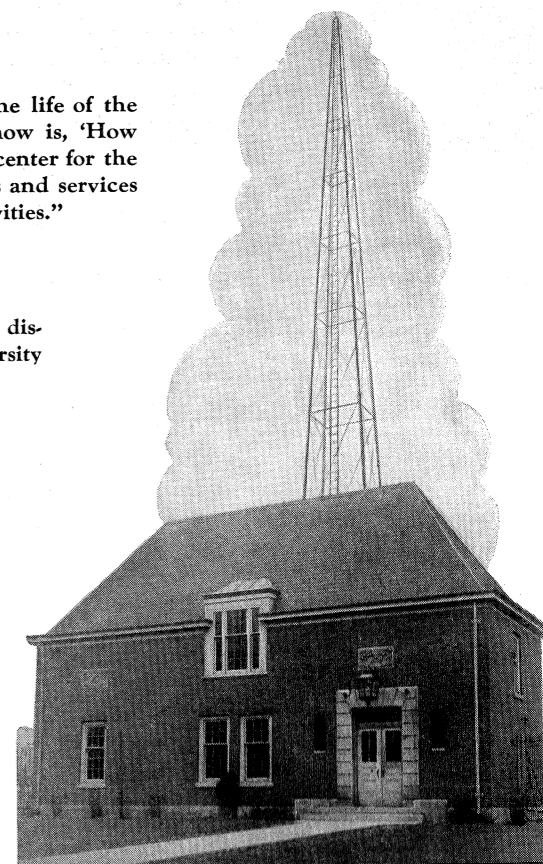
"I do not overemphasize the values of the building. I state them."

President Charles E. Friley, Iowa State College:

"The Memorial Union at the Iowa State College solves many problems of social life among the students by providing ample accommodations for practically all types of worth-while social activities.

"We feel that it would be difficult to get along without the Union, particularly in its relation to the general program of student life."

Roger C. Sullivan Memorial Station, W I L L, presented to the University in 1926 by Boetious Sullivan as a memorial to his father



SCHOLARSHIPS AND FELLOWSHIPS

WE HAVE spoken of the Union Building as one of the objectives of the Illini Plan. Another important need is provision for more scholarships and fellowships* for superior students. If we were to try to write a slogan here, we would say something like "More and Better Scholarships for More and Better Students." Scholarships are needed which pay more than mere tuition. If they provide for all a student's expenses, leaving him free to do his very best in his work, they naturally are more eagerly sought for. The competition for them is keener, and higher grade students get them.

In fact, it could be said that Illinois simply must establish more scholarships of this character, if for no other reason than that other universities are doing it and will in time take all the best students away from us if we do not do something. Under the new Illini Plan the scholarship and high school relations committees in the various communities of the State and nation are expected to do some very effective work in persuading high-grade students to attend Illinois.

It is proposed to consider scholarship applications with the following prerequisites in mind: Exceptional qualities of scholarship (at least the upper one-fourth of the student's class), intellect, character, personality, and leadership.

THE SPIRIT OF GIVING

What are the characteristics of a good alumnus? Indeed, what are the characteristics of a good citizen? Certainly one characteristic is his willingness to give to his community for the good of his friends and neighbors. The same is true of an alumnus.

There is nothing new about alumni giving. The alumni of other universities have for scores of years been contributing in a systematic way to their institutions.

The Illini Foundation Fund now gives our alumni the same opportunity and creates one agency through which all gifts can be made. This Fund makes it possible for all alumni to give, and to receive due recognition for their gifts.

If donors care to earmark their gifts for certain projects, it is their privilege to do so.

How may you give? Within a short time you will hear more about the various ways, such as an outright contribution on deferred payments, some sort of endowment, an annuity policy, or a clause in your will.

Of course you may not be able to give a Deering Library (Northwestern), a Lawyers' Club (Michigan), Rector Scholarships (DePauw), a Willard Straight Hall (Cornell), or a Rockefeller Memorial Chapel (Chicago).

However, any amount which you may give to the Fund will be very acceptable. The important point is that every alumnus should give something.

The Illini Plan must be one of interest, friendship, and gifts not of duty or coercion, but of friendly good-will.

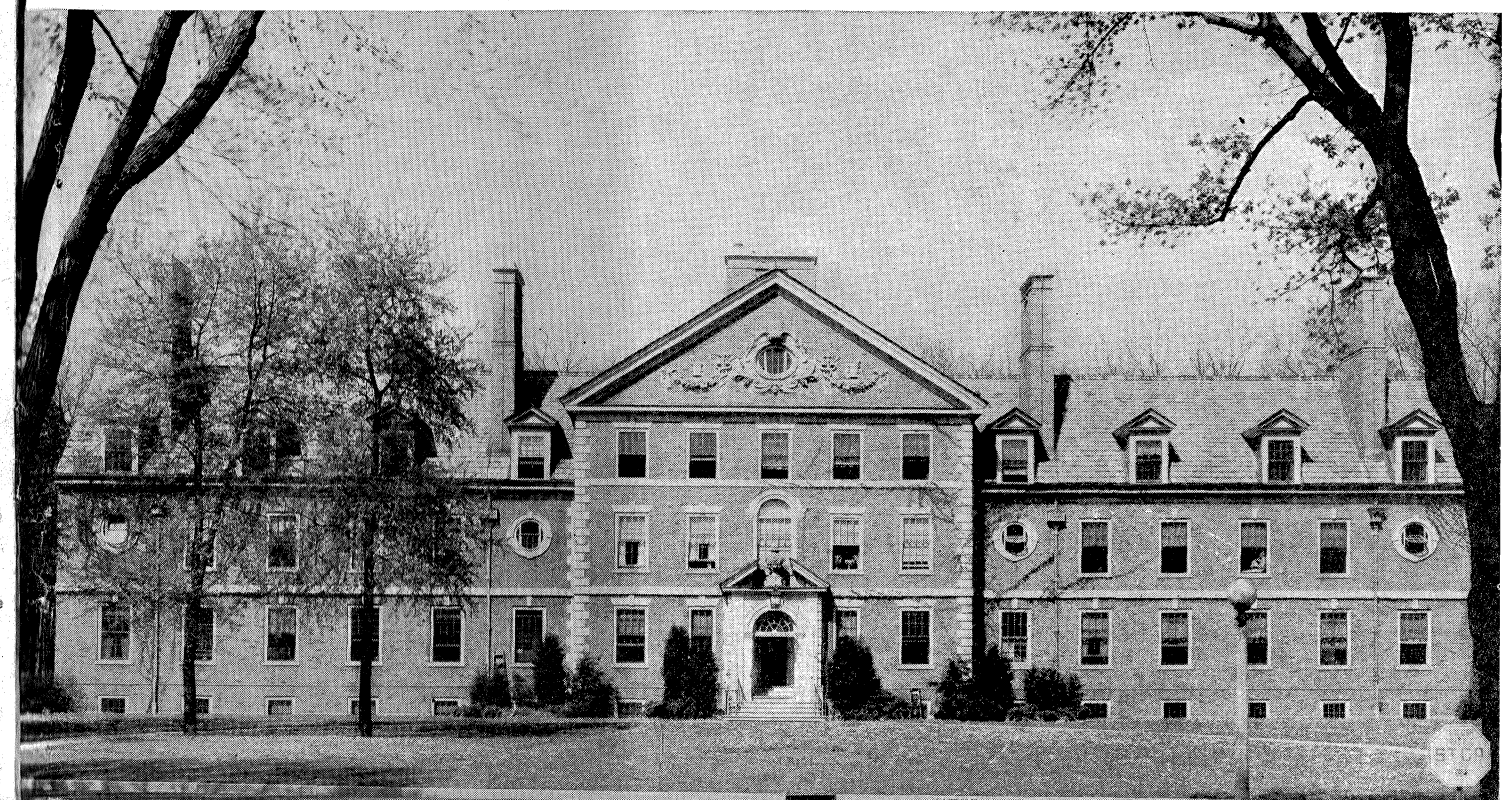
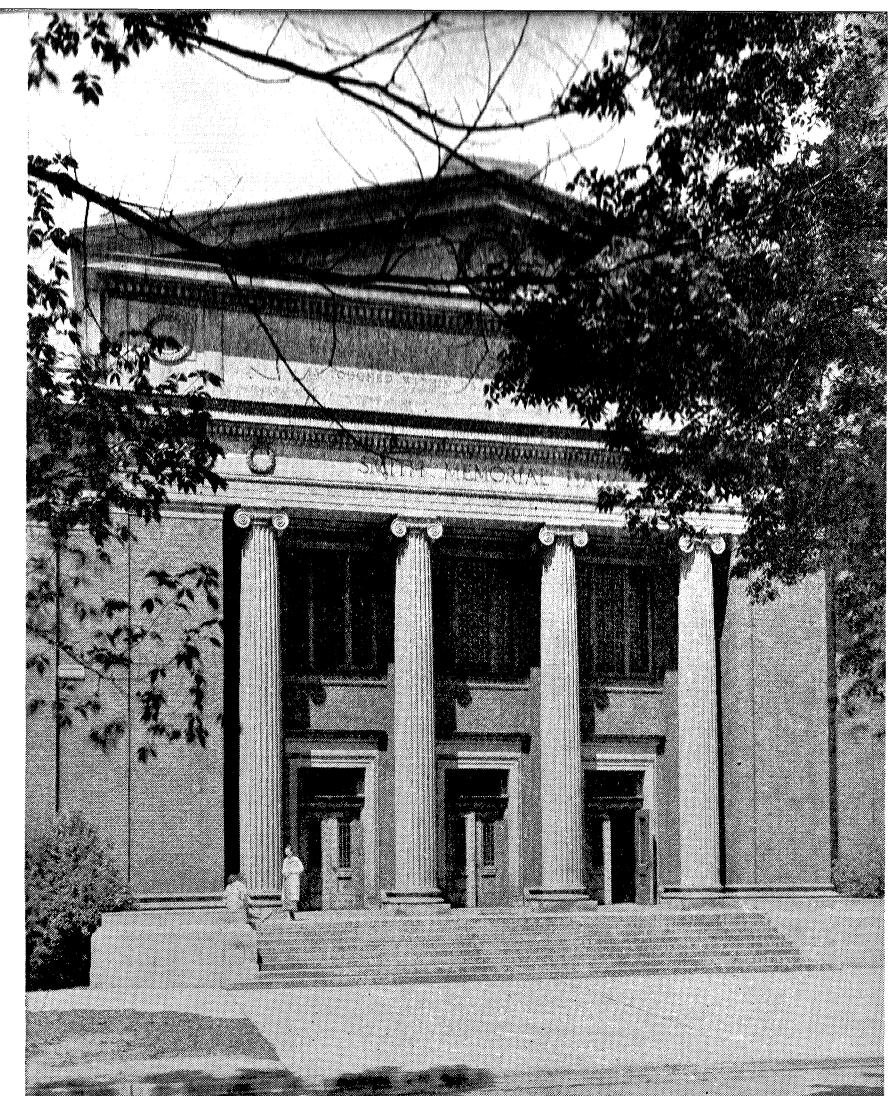
"Illinois—a name that reminds you of courage, of fair play—an institution that is not fat, not soft, not self-satisfied, not too old to grow—that is eager to be in harmony with the times it represents. Illinois—the University of the people, where there is no vestige of snobbery, and the only way to raise your head above the level of the crowd is to be a better man."—Coach Zuppke, in his Founders' Day Talk.

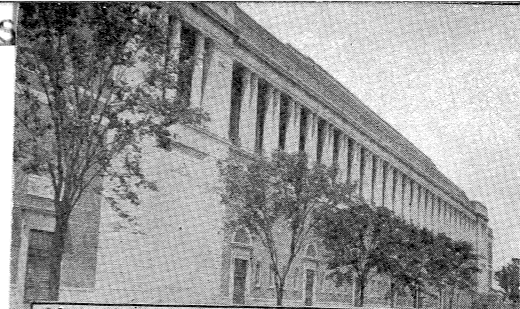
*The University already has many scholarships paying all or part of the tuition and incidental fees only. A small number of other scholarships take care of these expenses and also part of the living expenses, but none of them covers all costs.

ALUMNI GIFTS MADE THESE MEMORIALS POSSIBLE

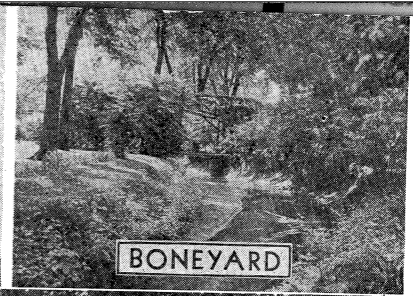
TINA WEEDON SMITH MUSIC HALL, a gift of Captain Thomas J. Smith as a memorial to his wife. The building houses the School of Music. There are numerous sound-proof studios and a recital hall seating one thousand, which is equipped with a splendid organ

WILLIAM B. MCKINLEY UNIVERSITY HOSPITAL. A seventy-five bed hospital given to the University by the late Senator William B. McKinley, '76, for students and faculty. An additional wing has been proposed which will provide fifty more beds. The hospital has proved a most beneficent gift and has aided greatly in maintaining the good health of the student body. A Hospital Association with a small voluntary membership fee provides inexpensive hospital service. The membership in the Association for 1937 is about 6,500





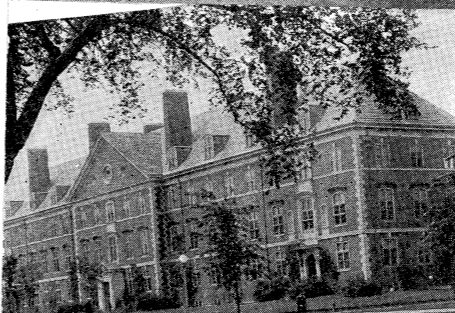
STADIUM—MEMORIAL COLUMNS



BONEYARD



AUDITO



COMMERCE



ADMINISTRATION



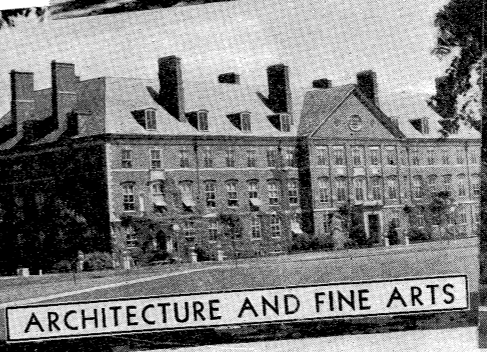
BURRILL AVENUE
BROADWALK



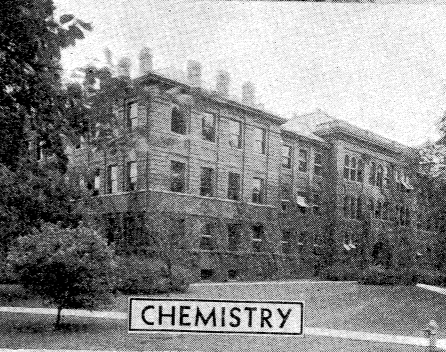
NEW AGRICULTURE



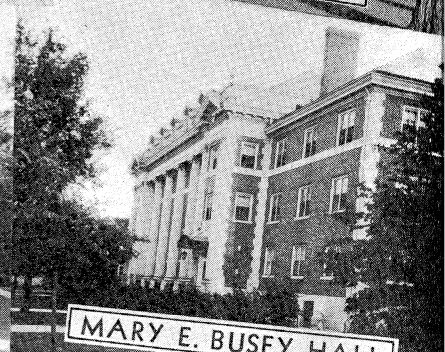
LINCOLN HALL



ARCHITECTURE AND FINE ARTS



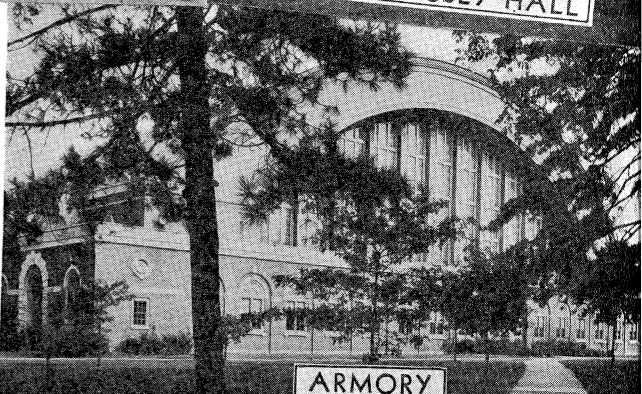
CHEMISTRY



MARY E. BUSEY HALL



WOMAN'S GYMNASIUM



ARMORY

M
De
St
the
of

A
un
La
bec
Bo
the
am
and
pro
Bo
En
W
stil
I
app
19
vol
cau
dit
ize
fro
con
tin
loa
ho
un
19
De
cal
in
the