

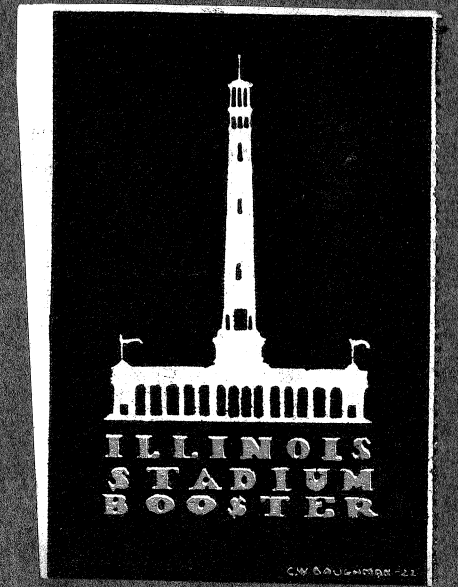
ILLINOIS
ATHLETICS



Illinois University



To those who are particularly interested in athletics and in the profession of athletic coaching we take this means of acquainting you with the University of Illinois...



SCHOOL OF ATHLETIC COACHING
STAFF OF INSTRUCTION

G.A. HUFF..... Director
R.C. ZUPPKE..... Football
J.L. GRIFFITH... Organization
H.L. GILL..... Track
C.L. LUNDGREN... Baseball
E.J. WINTERS... Basketball

A.J. SCHUETTAER... Gymnastics
E.J. MANLEY... Swimming
E.E. BEARD... Football and Basketball
E.R. KNOLLIN... Tumbling
R.H. PREHN... Wrestling and Boxing
D.M. BULLOCK... Training and Massage



GEORGE A. HUFF
DIRECTOR....



•Zupke•



•Gill•



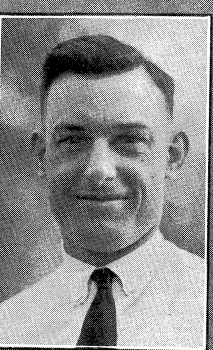
•Lundgren•



•Winters•



•Griffith•



•Beard•



•Schuettnor•



•Prehn•



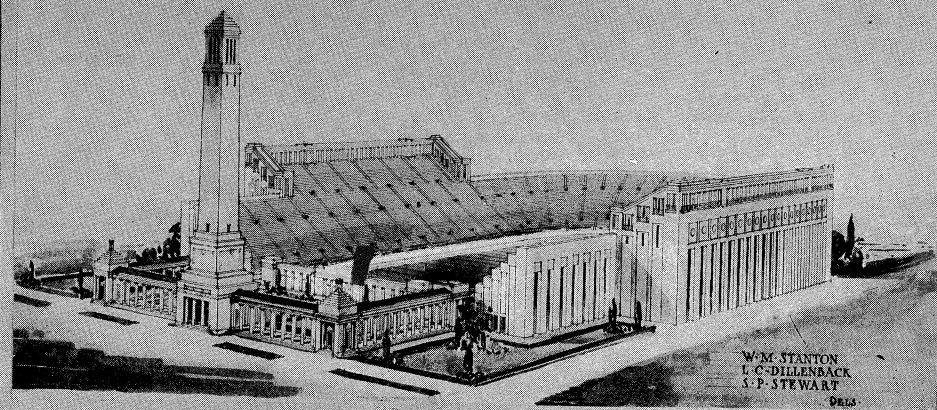
•Knollin•



•Manley•



•Bullock•



W.M. STANTON
L.C. DILLENBACK
S.P. STEWART
DELS.

PROPOSED MEMORIAL STADIUM

CAMPANILE COLONNADE COURT OF HONOR

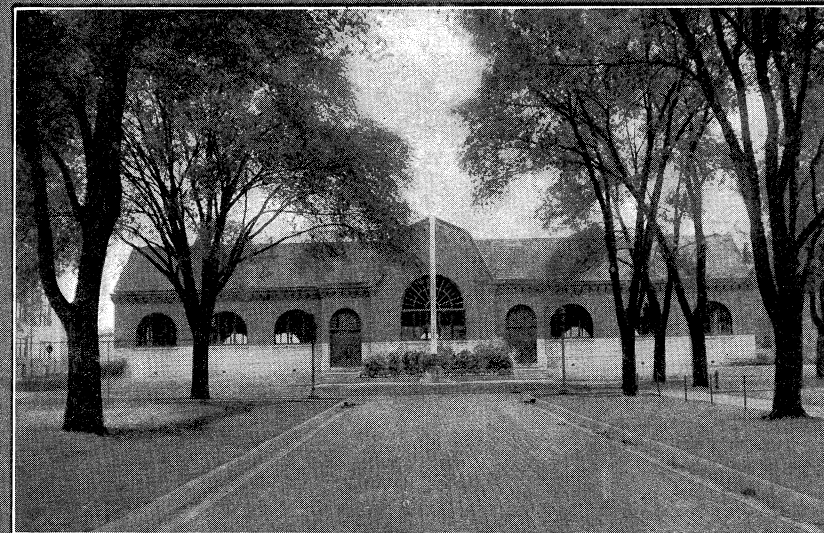
Campanile Dedicated to Illinois Ideals • the Columns
To Illinois Dead and Wounded and the Court of
Honor to All Who Served • The Two Smaller Towers, One
Dedicated to the Soldiers, the Other to Sailors
And Marines • The Court of Honor Forms An Open
Air Theatre Set In formal Gardens:
• May Fetes • Band Concerts • Entertainments • Plays •

STADIUM

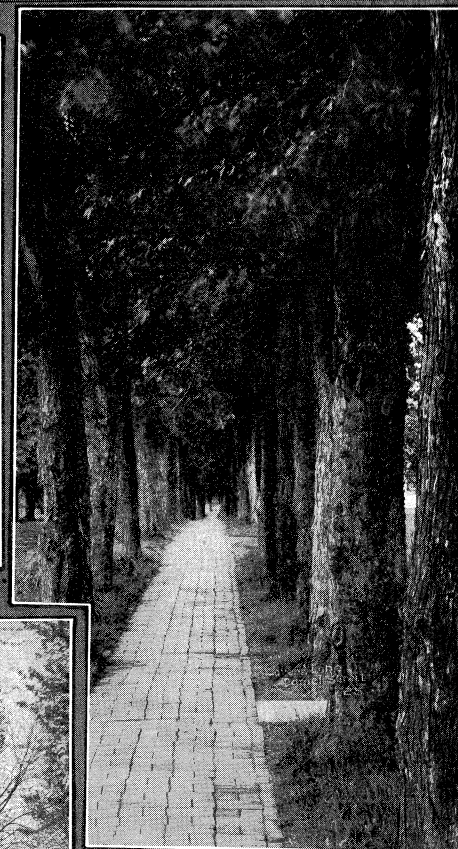
Seating Capacity 75,000 • 65 Tiers • 120
Yards Long • Quarter Mile Track, 120 Yard Straight
Away • Baseball, Handball • Indoor Wrestling And
Tennis Courts • Running Tracks • Skating Rinks
Showers And Dressing Rooms •

RECREATIONAL FIELD

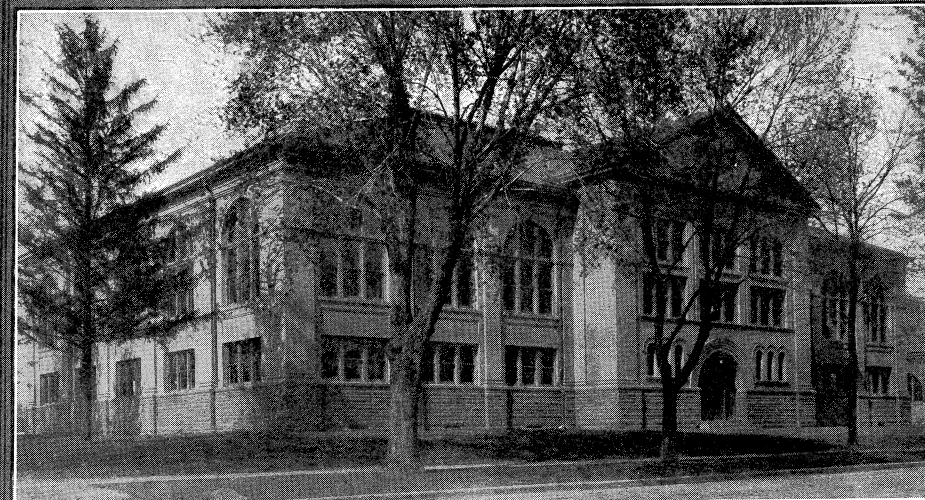
Inter-mural Football Fields And Baseball Diamonds • Tennis
Courts • Hockey And Polo Fields



GYM ANNEX BASKETBALL COURT SEATS 4400



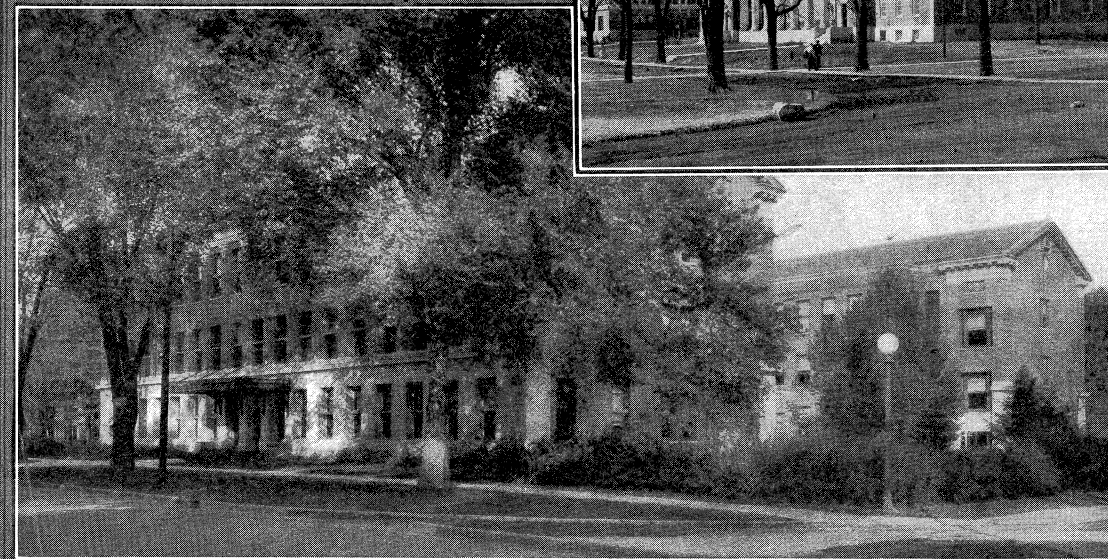
LOVER'S LANE



MEN'S GYM



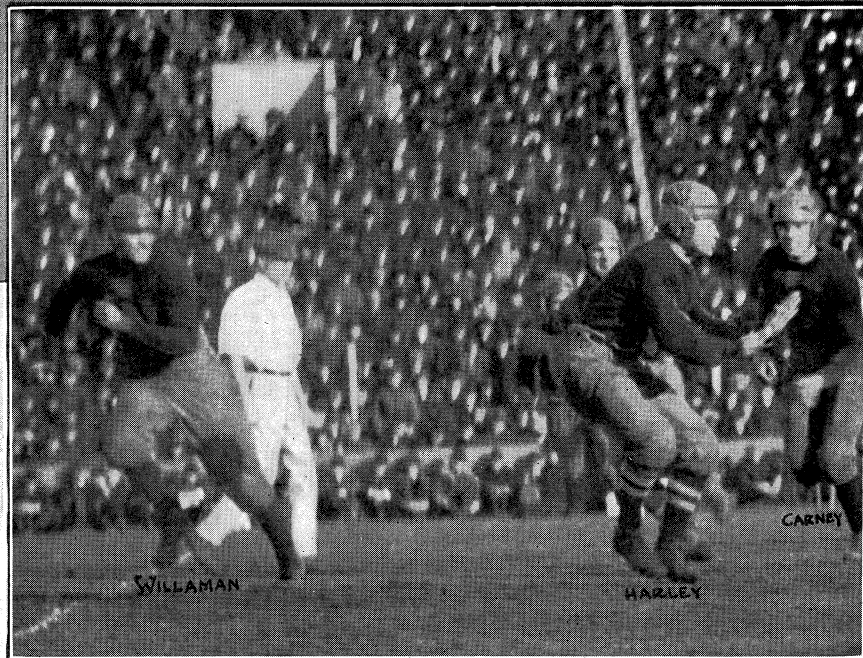
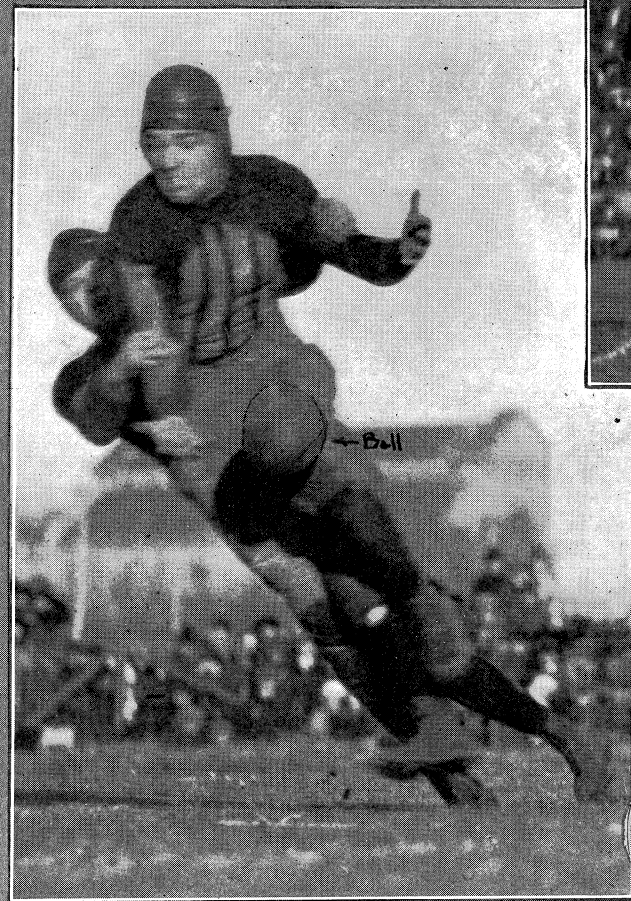
ADMINISTRATION



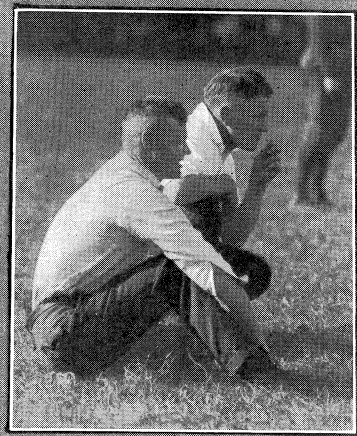
WOMAN'S BLDG



FOOTBALL:

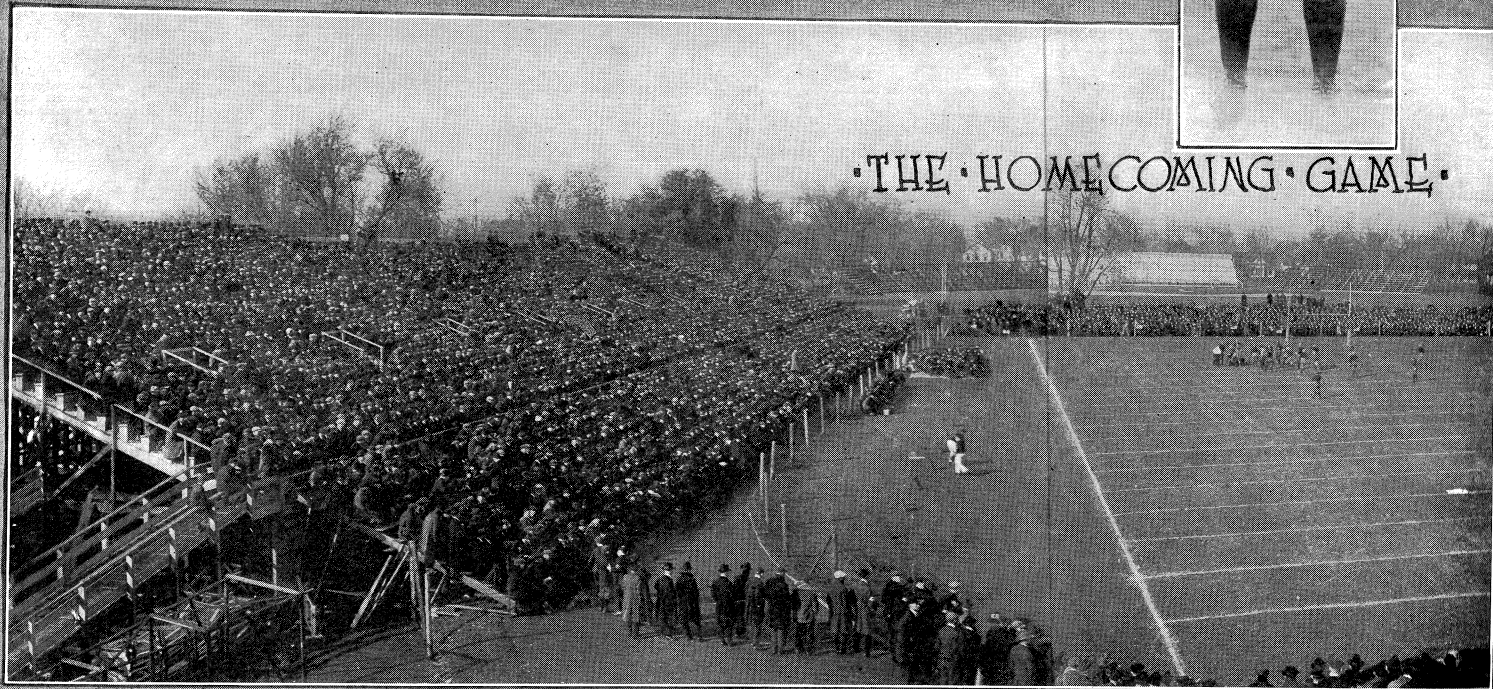


.... WALQUIST RUNNING BEHIND SPLENDID



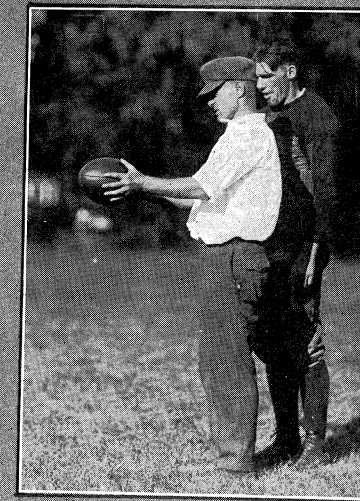
WALQUIST
CAPTAIN
1921

• THE • HOME • COMING • GAME •



INTERFERENCE. MAKES LONG GAIN • FINAL BIG TEN CONFERENCE CHAMPIONSHIP GAME •••
••• OHIO 7 •• ILLINOIS 9 •••

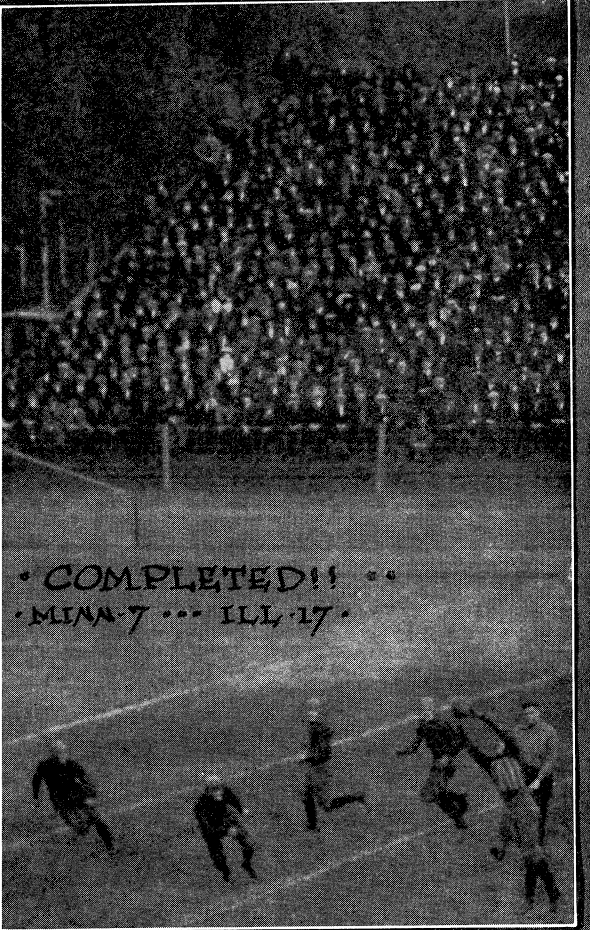
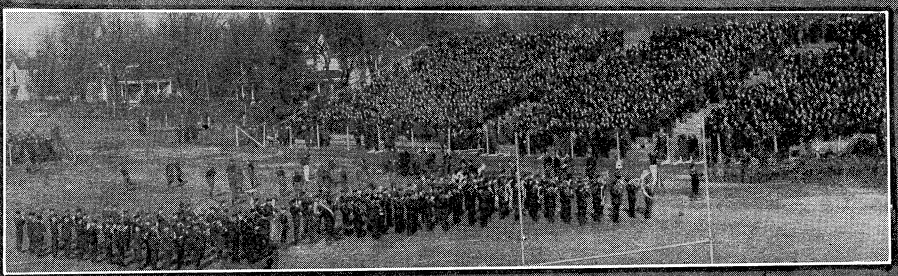
• ZUPPKE'S • CHAMPIONSHIP •
• RECORD • AT • ILLINOIS •
• SINCE • 1913 •
• WON • 3 •
• TIED • 1 •



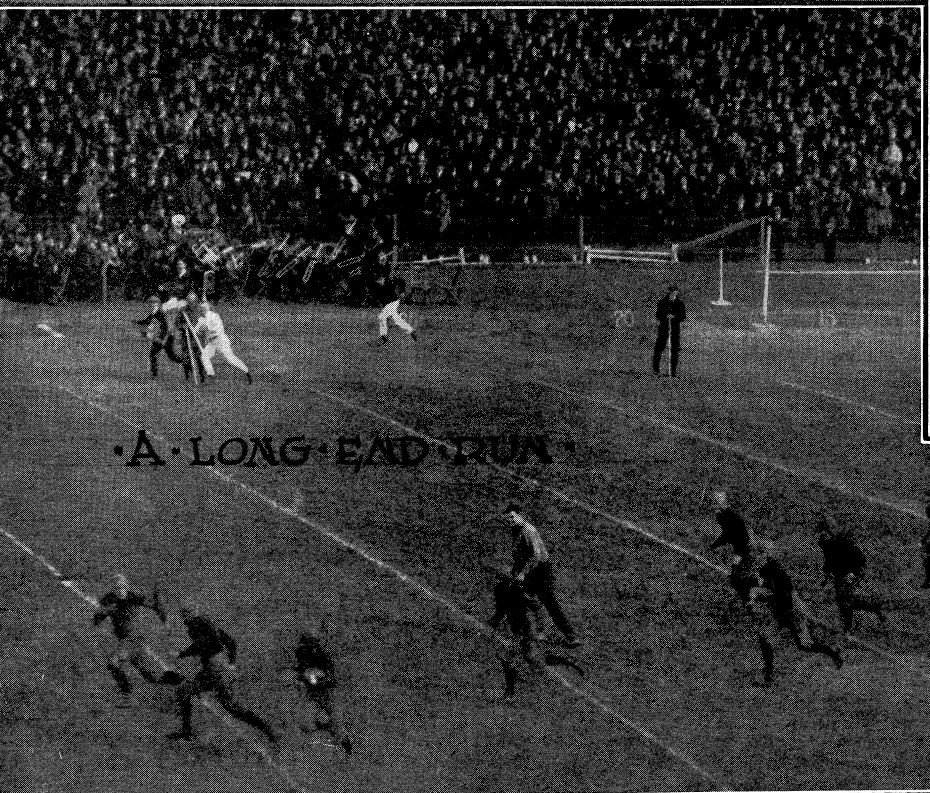
• 1919 • ILLINOIS 10 • CHICAGO 0 •••



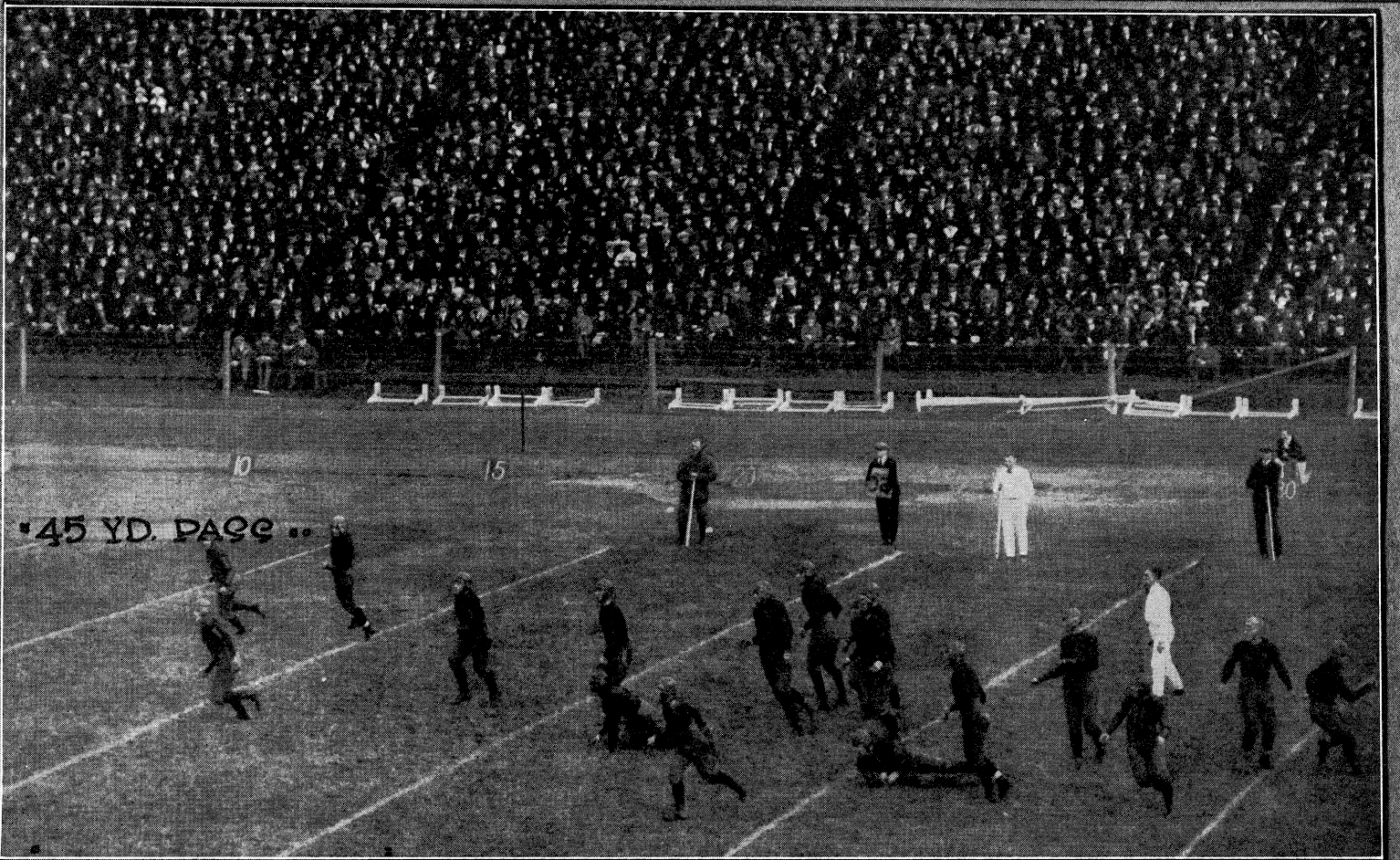
FOOTBALL



• COMPLETED!! •
• MIAM 7 ... ILL 17 •

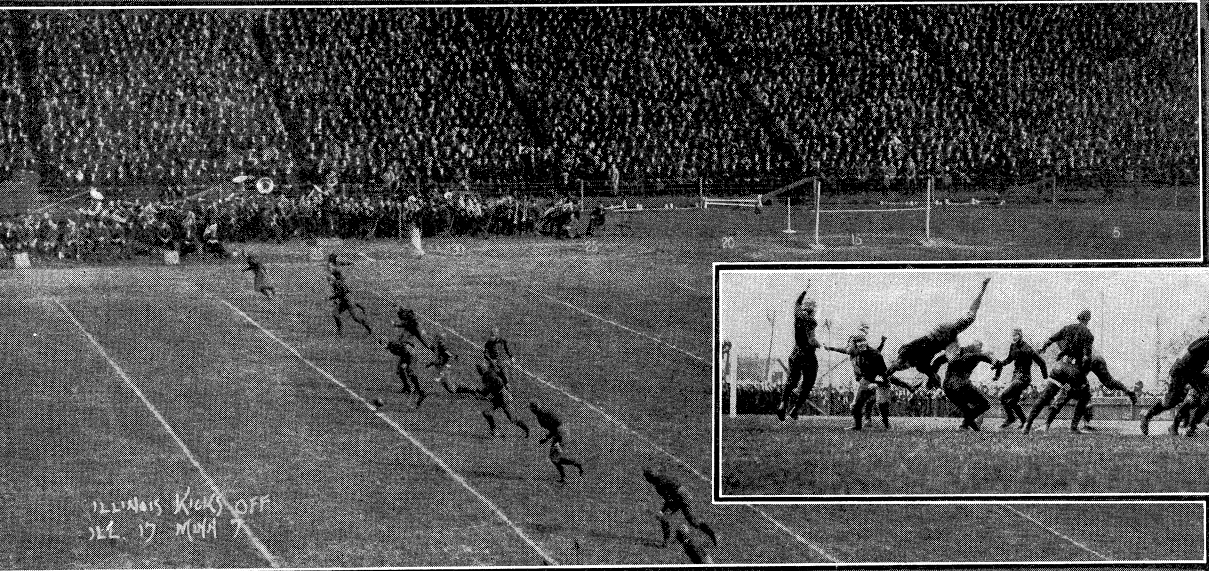
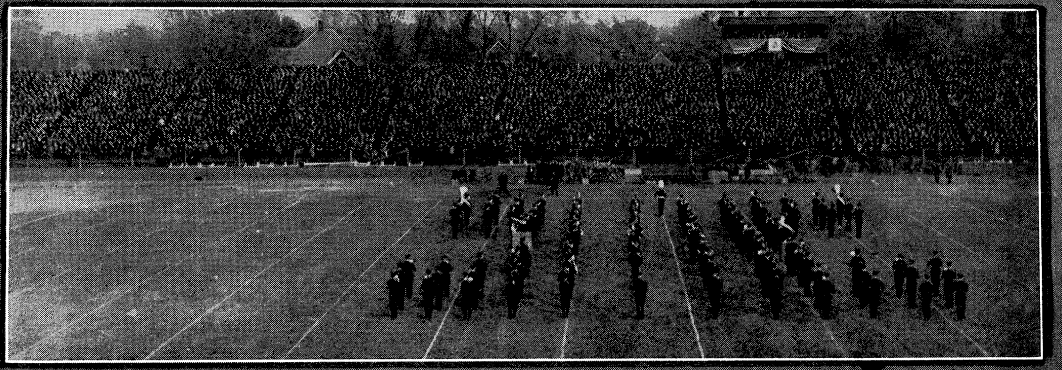


• A LONG END RUN •



• 45 YD. PASS •

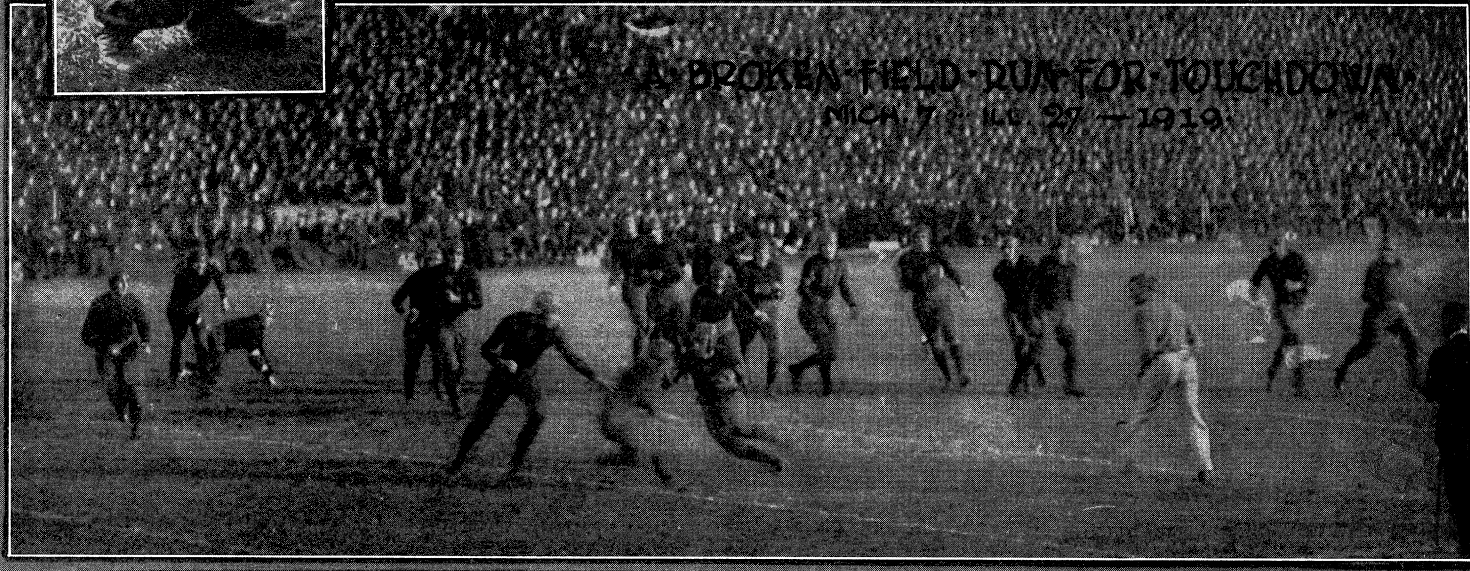
• WALQUIST to CARNEY •



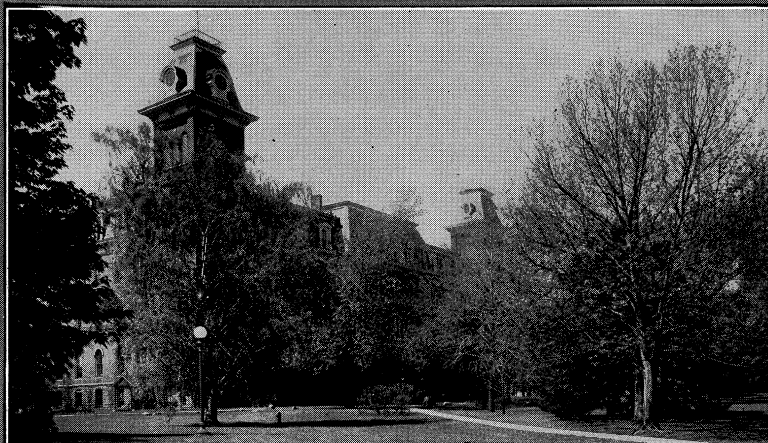
THE KICK OFF



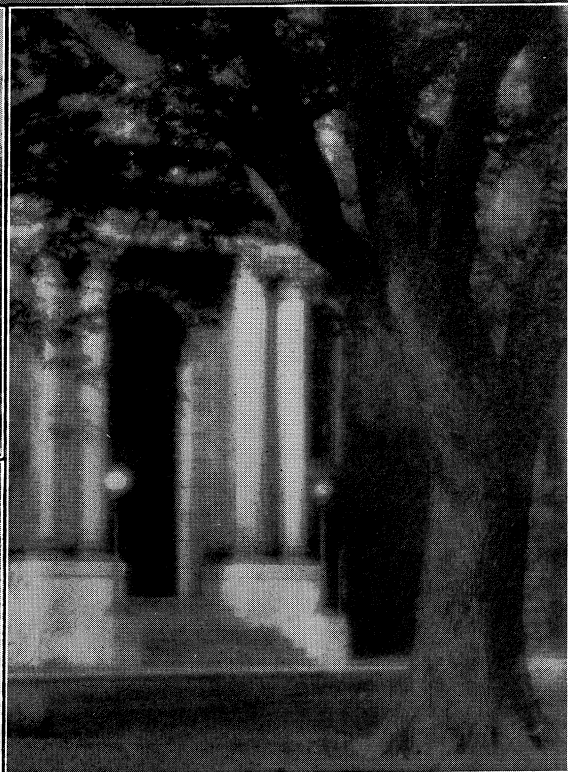
ILLINOIS KICKS OFF
OCT 17 MIAM 7



A BROKEN-FIELD-RUN-FOR-TOUCHDOWN
MIAM 7 ILL 27 - 1919



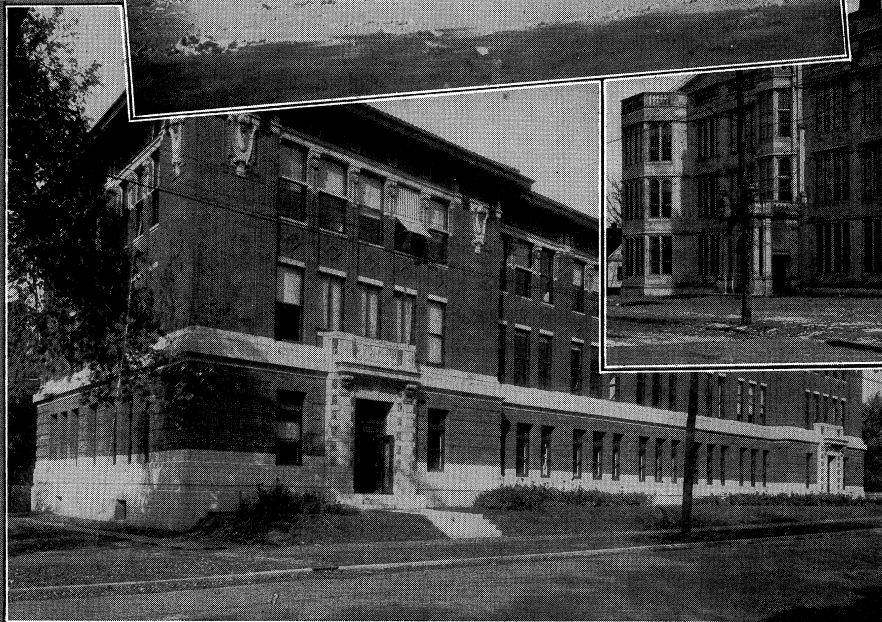
• UNIVERSITY • HALL •



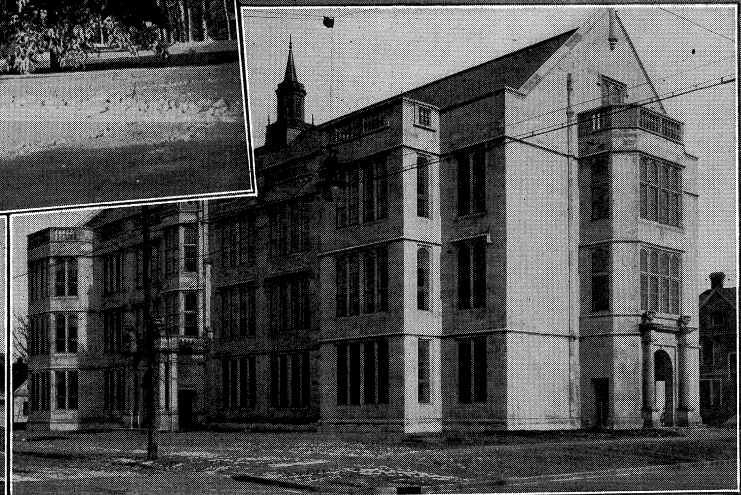
• • ENTRANCE • UNI • HALL • • •



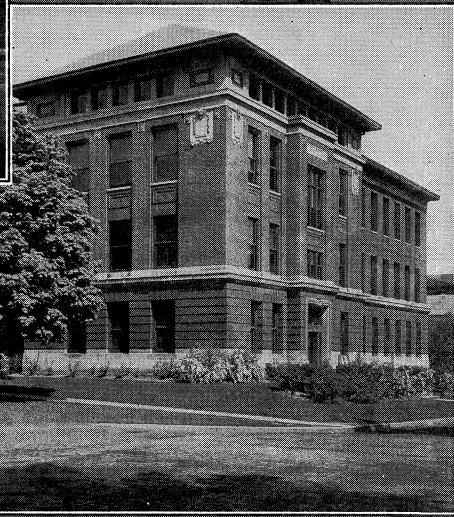
• CHIMES TOWER •



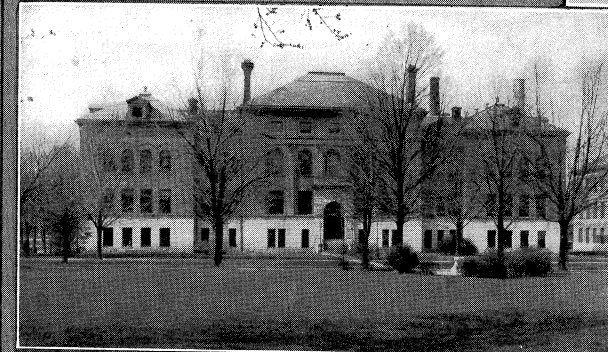
• CERAMICS •



• EDUCATION •



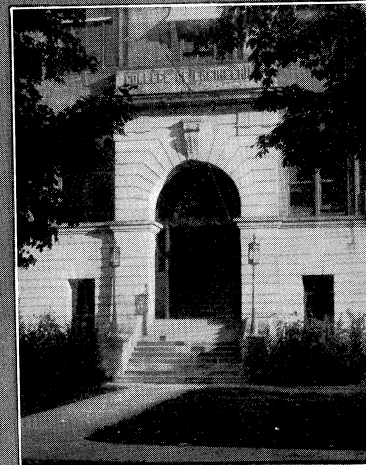
• PHYSICS •



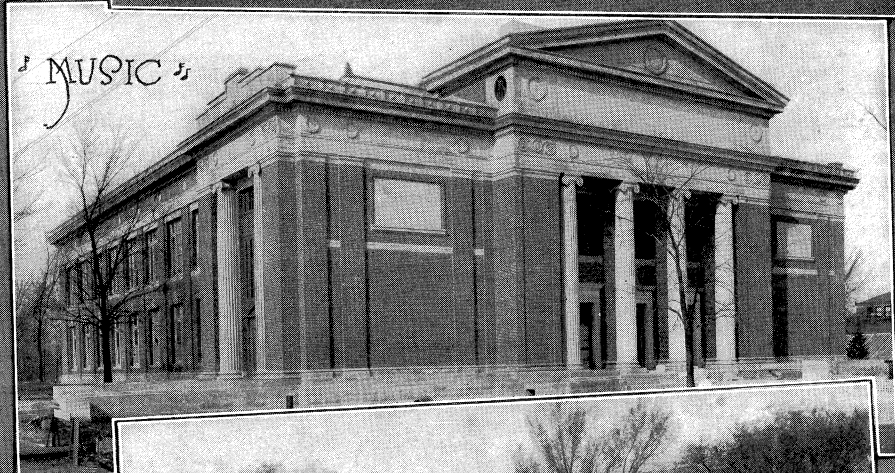
• • ENGINEERING • •



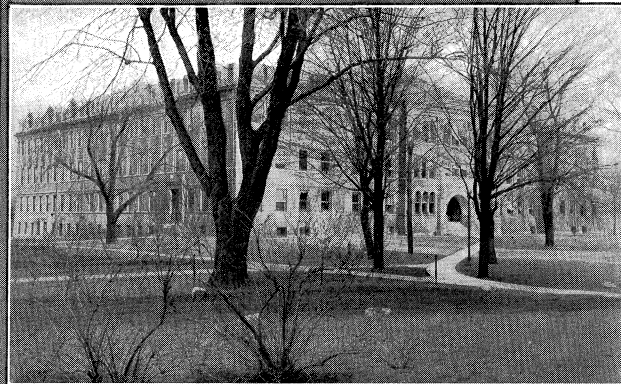
• NATURAL • HISTORY •



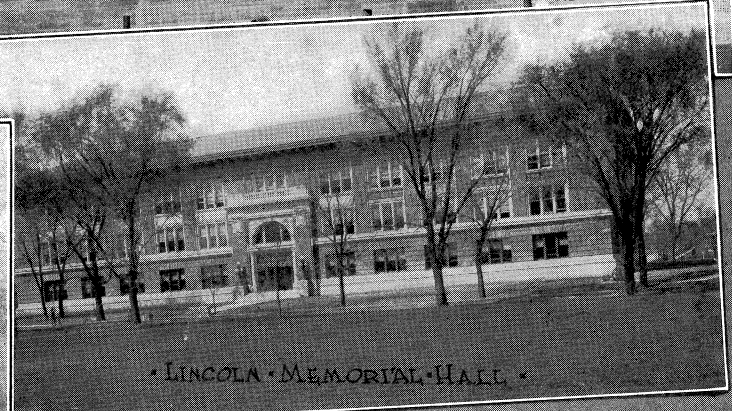
• ENGINEERING • ENTRANCE •



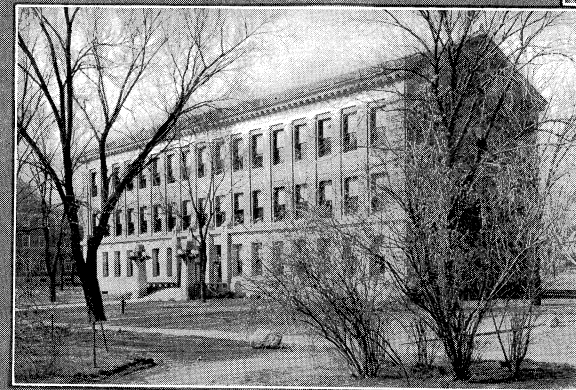
• MUSIC •



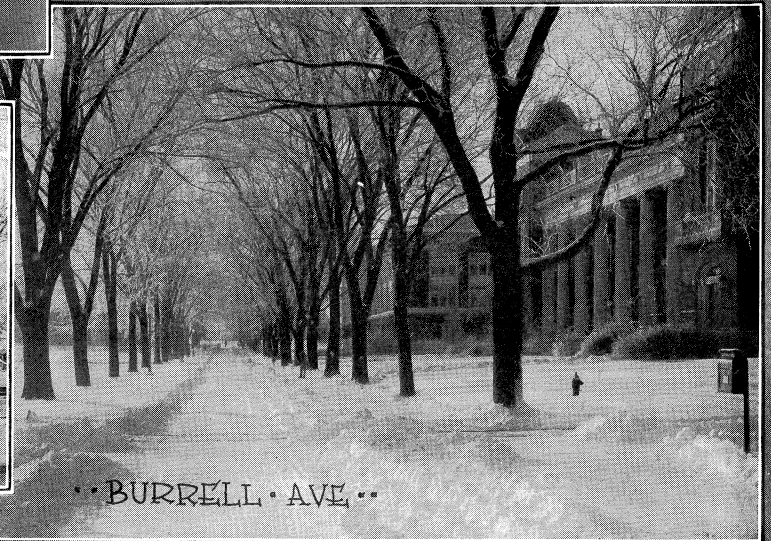
• • CHEMISTRY • •



• LINCOLN • MEMORIAL • HALL •



• • COMMERCE • •

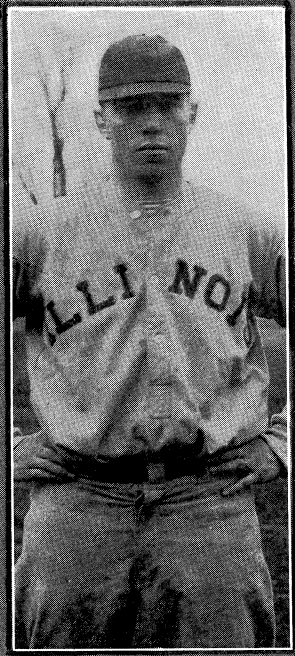


• • BURRELL • AVE • •

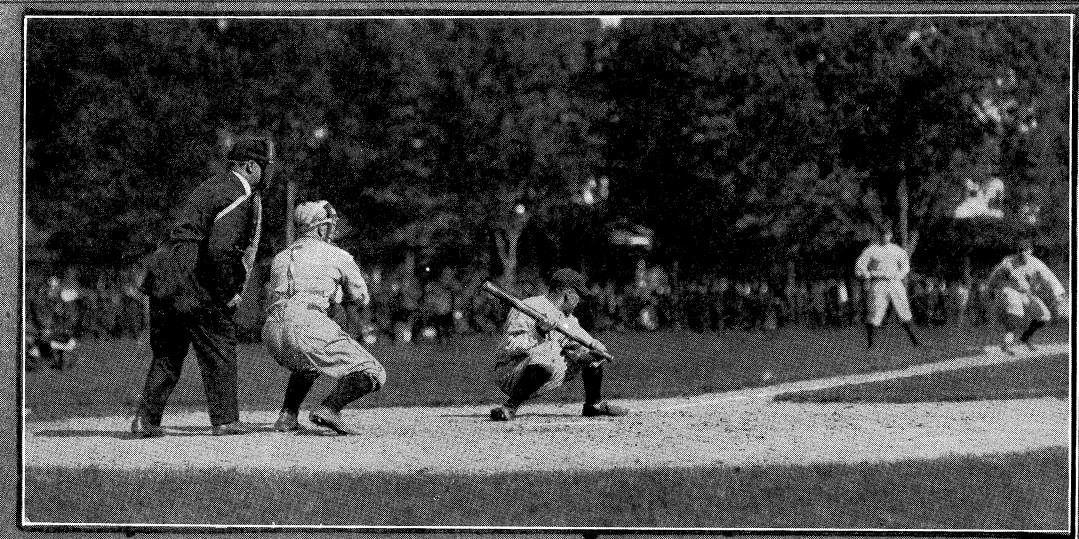
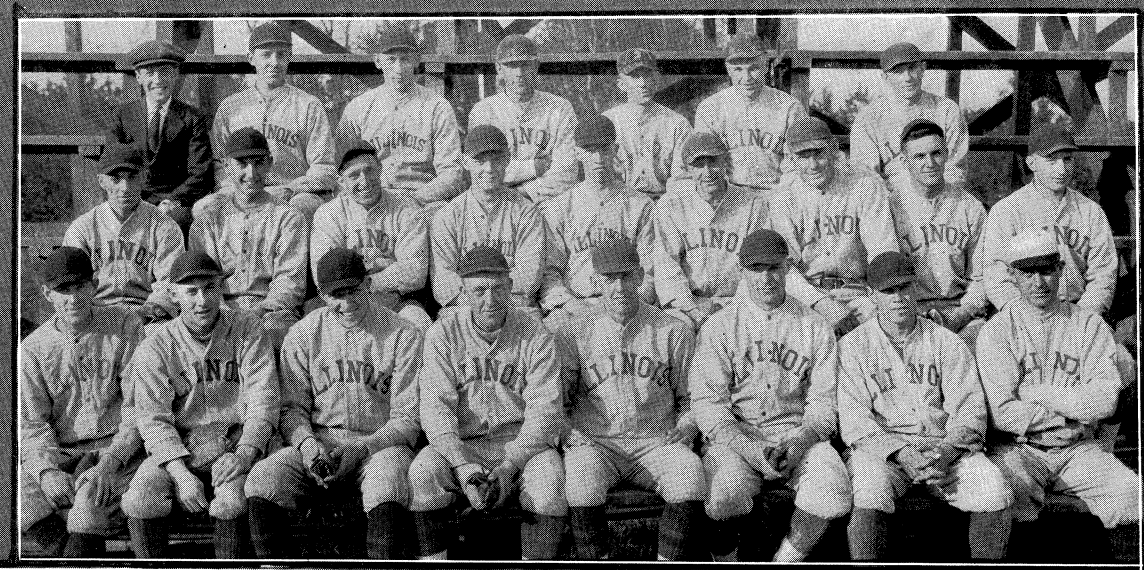
BASEBALL



SAFE!



Mc CURDY
CAPTAIN '22



A WILD PITCH

"BIG TEN" CONFERENCE
CHAMPIONS 1921

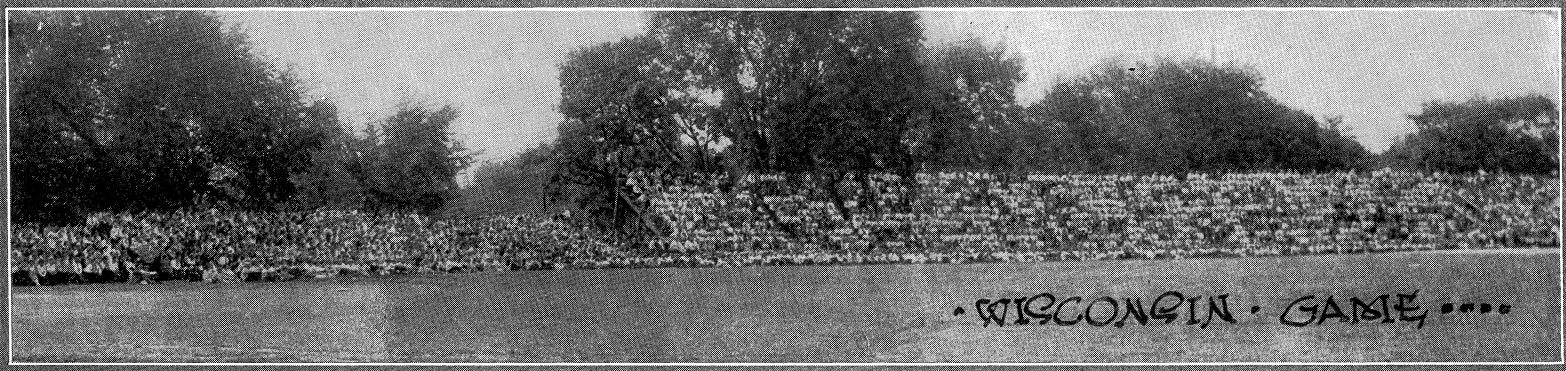
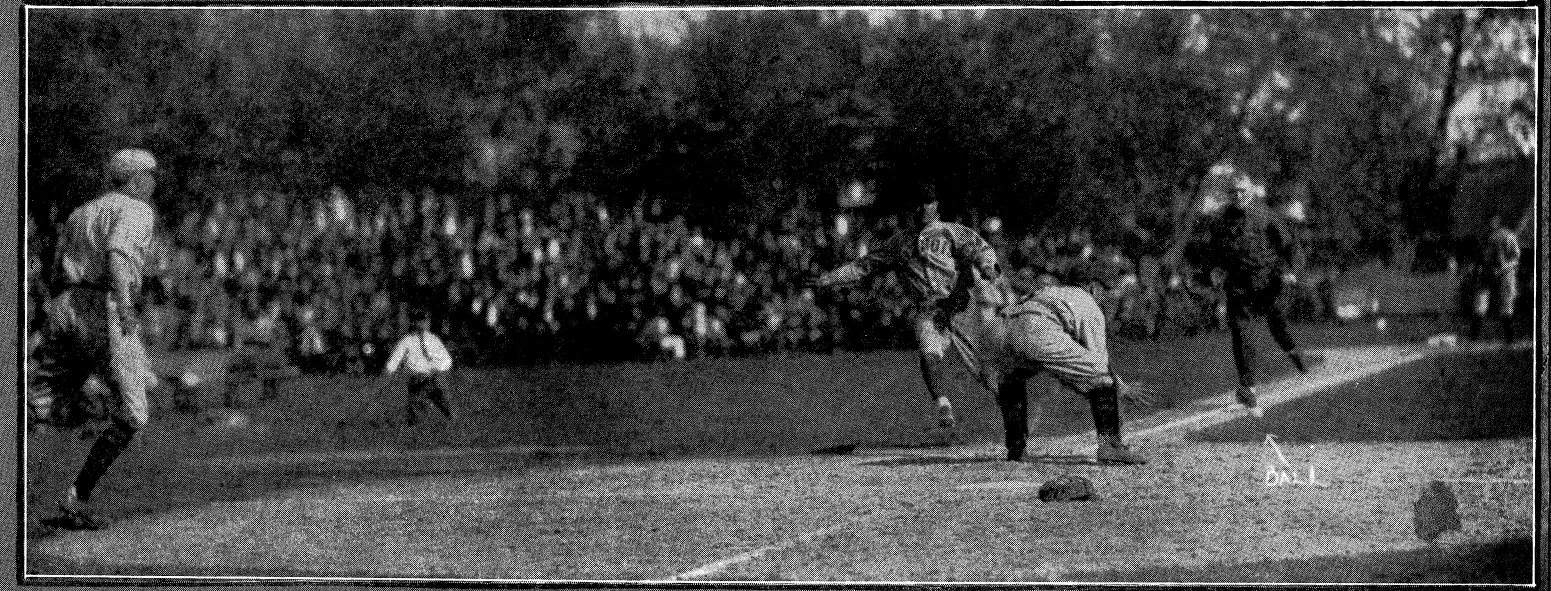
WON 10
LOST 1

STEWART
3RD

CLOSE PLAY AT THE PLATE



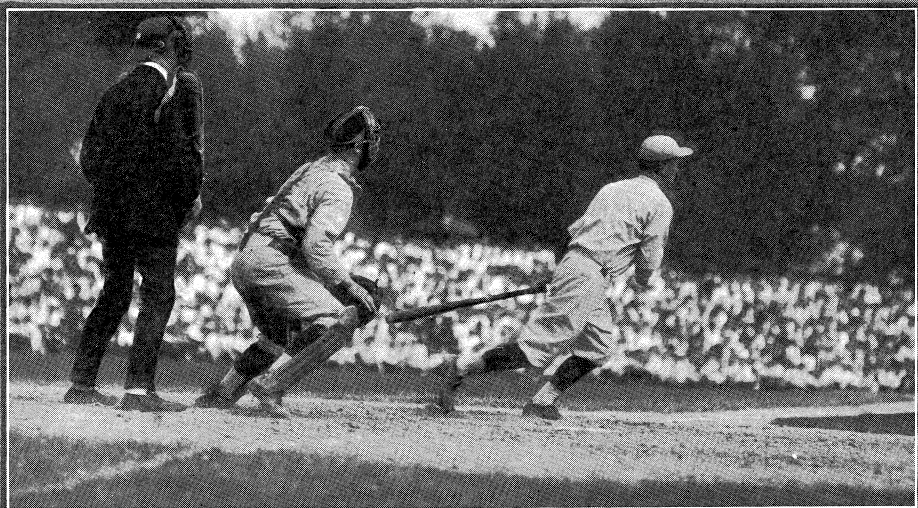
SAFE AT HOME OHIO 4 ILL 8



WISCONSIN GAME



WISC 0 ILL 5

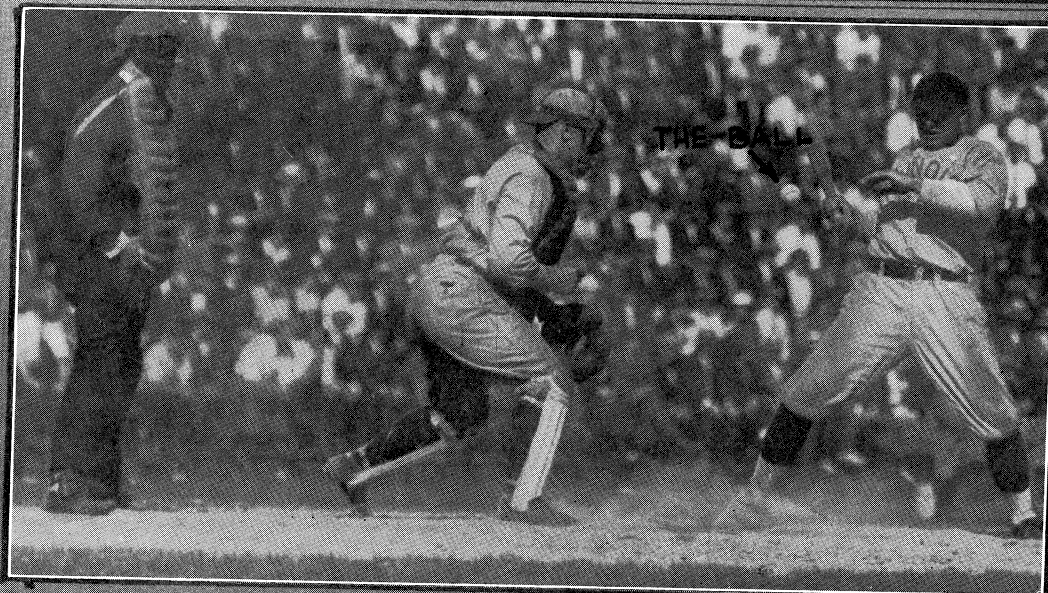


TANAKA, THE BABE RUTH OF JAPAN,
CONNECTS WITH ONE.
WASEDA 0 ILLINOIS 1



George Hepp
Grover Cleveland Alexander
Look over the 1920 team.

1885 ILLINOIS FIRST BASEBALL TEAM



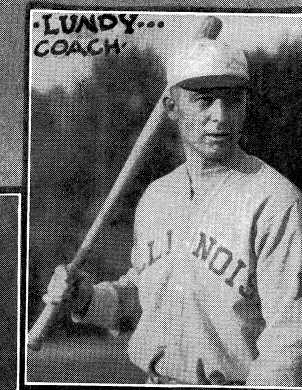
DODGING A FAST ONE



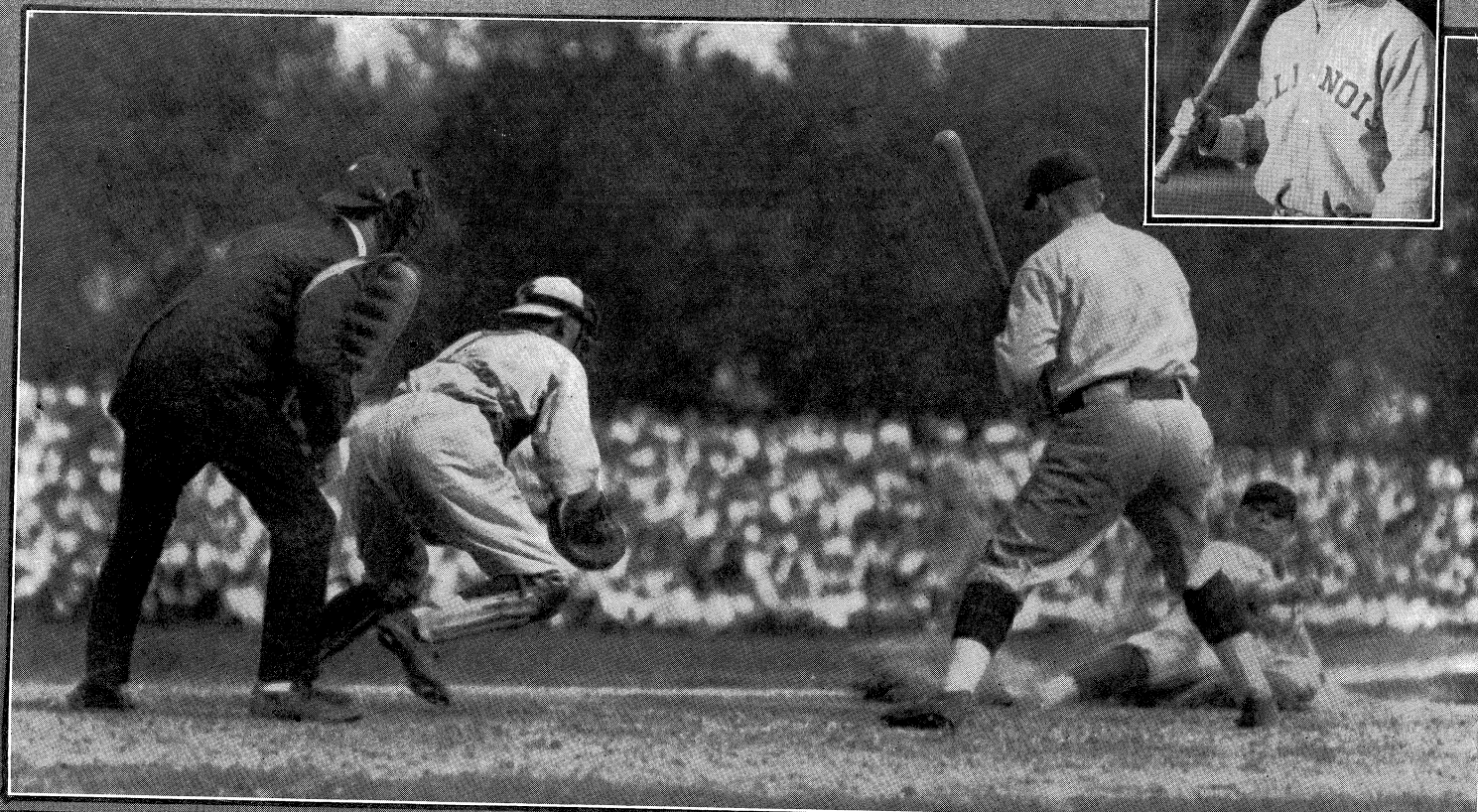
G TAKE A WORKOUT

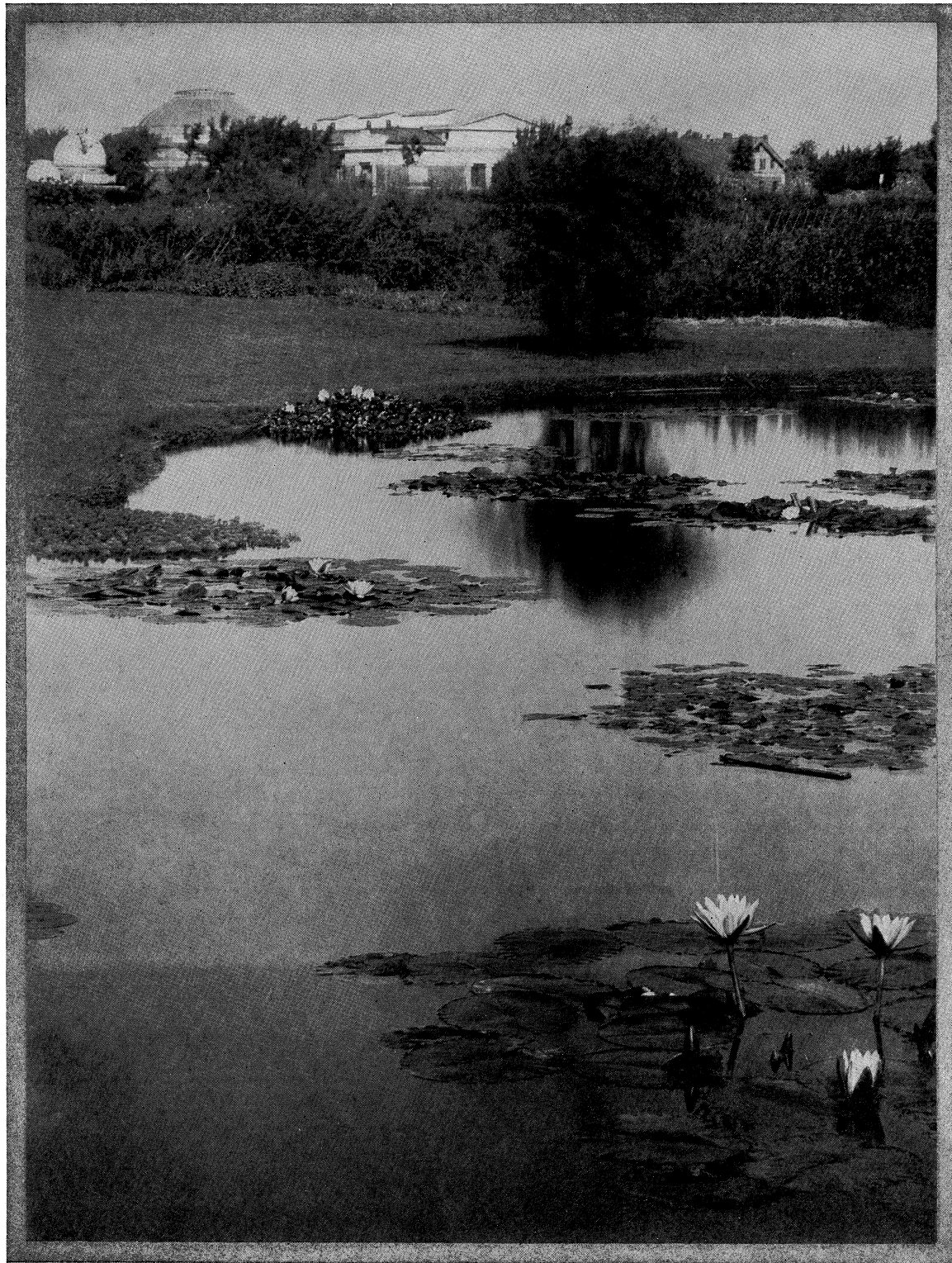


MR CURDY STEALS HOME

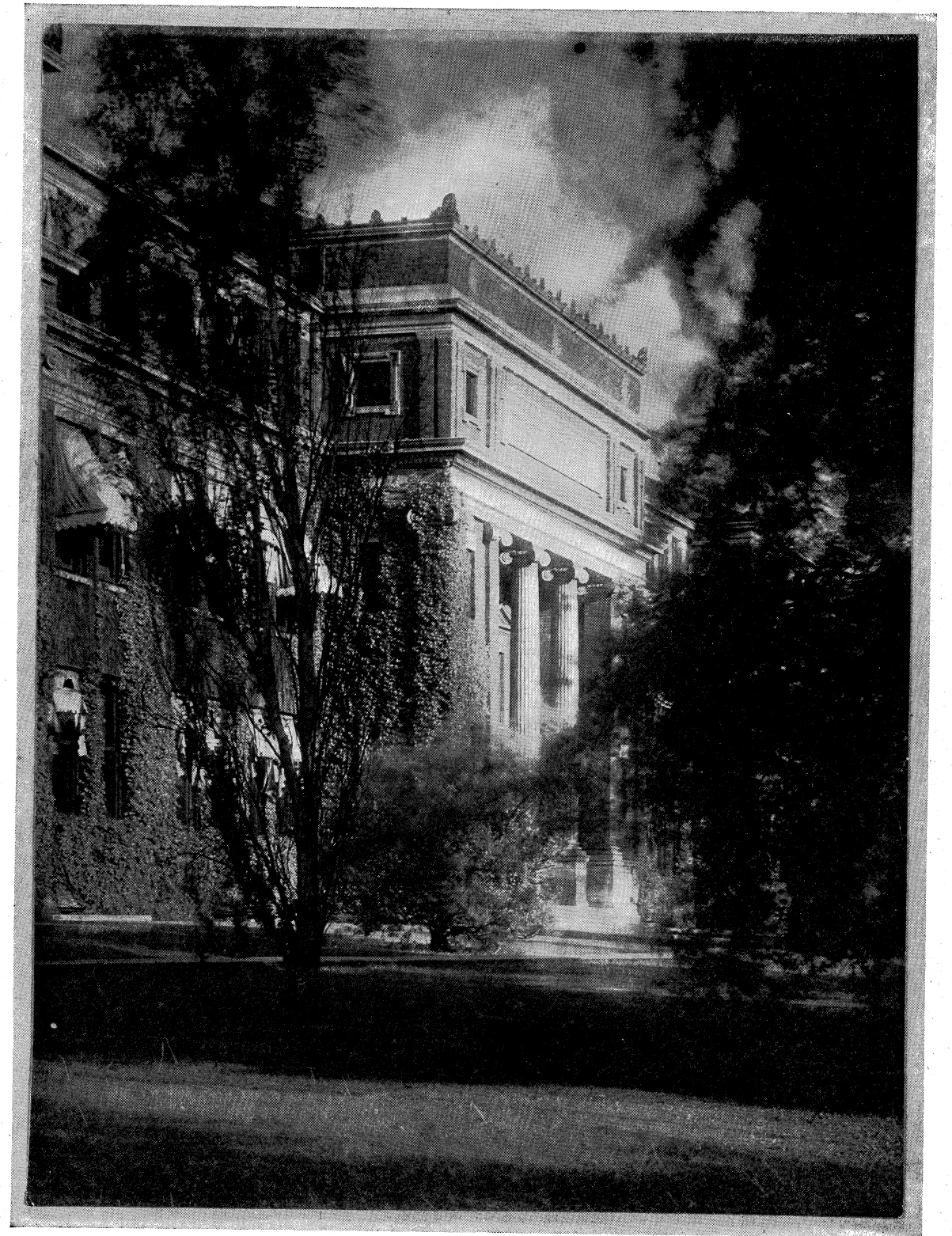


LUNDY... COACH





SOUTH CAMPUS



AGRICULTURE BUILDING



BASEBALL:

- 1900
- 1902
- 1904
- 1907
- 1908
- 1909
- 1910
- 1911
- 1914
- 1915
- 1916
- 1921

TRACK
INDOOR:

- 1912
- 1914
- 1915
- 1920
- 1921

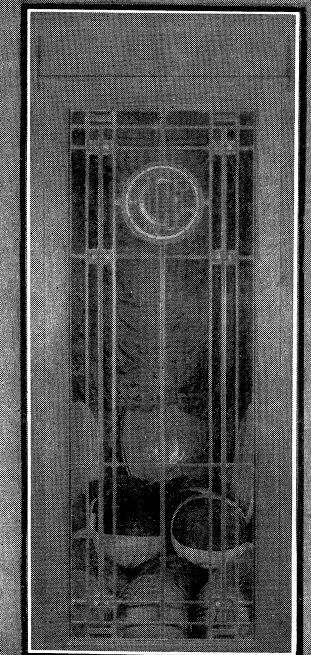
**BIG - TEN - CONFERENCE -
CHAMPIONSHIPS WON
BY UNIVERSITY OF ILLINOIS**

TRACK
OUTDOOR:

- 1907
- 1909
- 1914
- 1919
- 1920
- 1921

FOOTBALL:

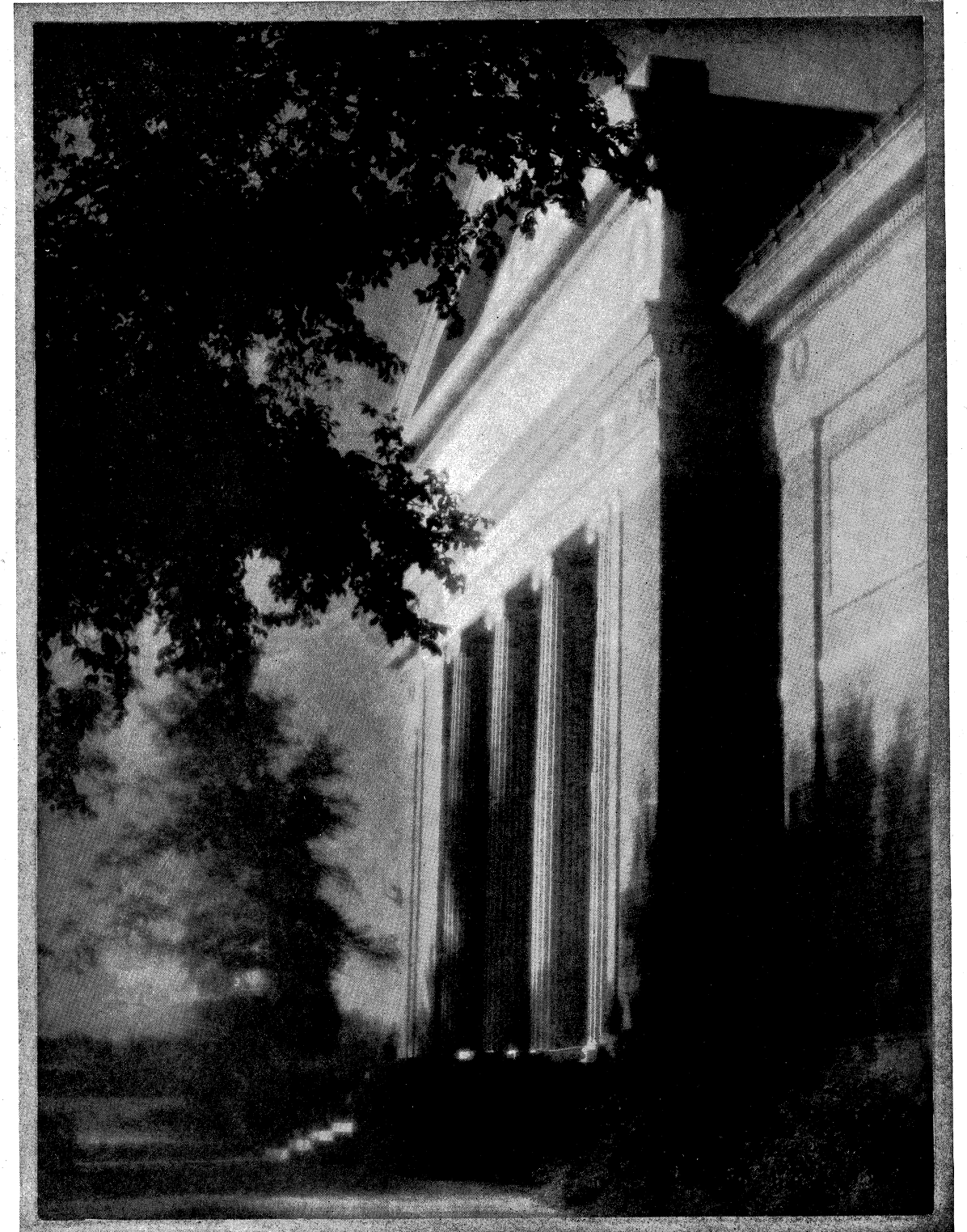
- 1910
- 1914
- 1915
- 1918
- 1919



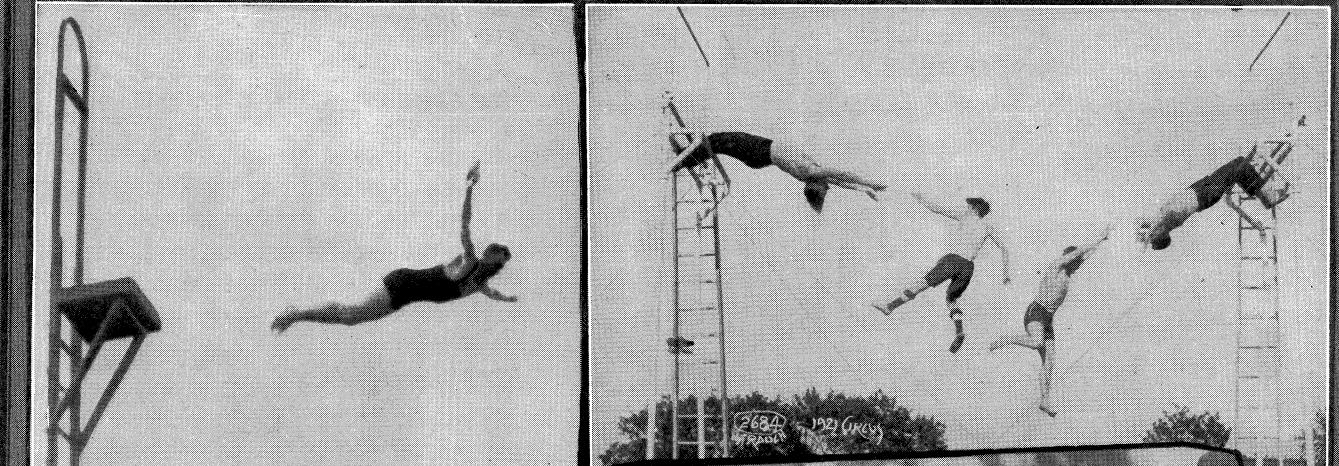
ERROR:—Outdoor Track Championship in 1913, not 1919. Football Championships were TIED in 1910 and 1915.



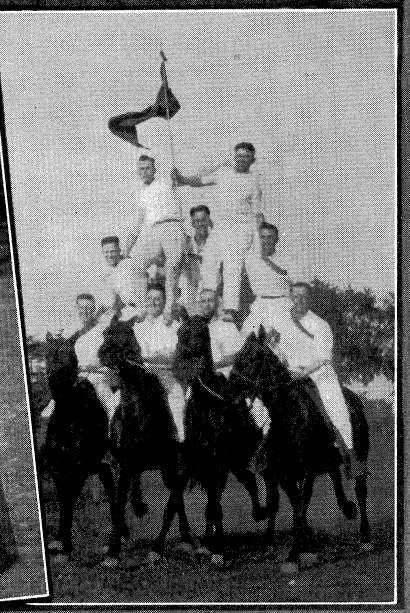
LINCOLN HALL



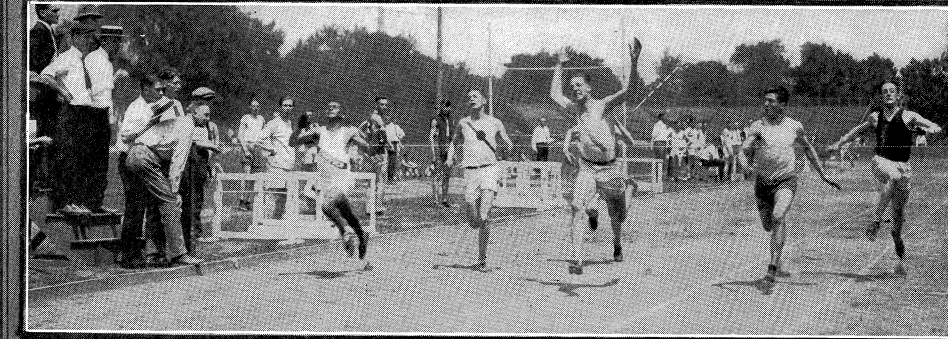
SMITH MEMORIAL HALL



• ANNUAL • CIRCUS •
• INTERSCHOLASTIC • WEEK •
• ENTERTAINING • THE •
• HIGH • SCHOOL • VISITORS •
• 1921 •

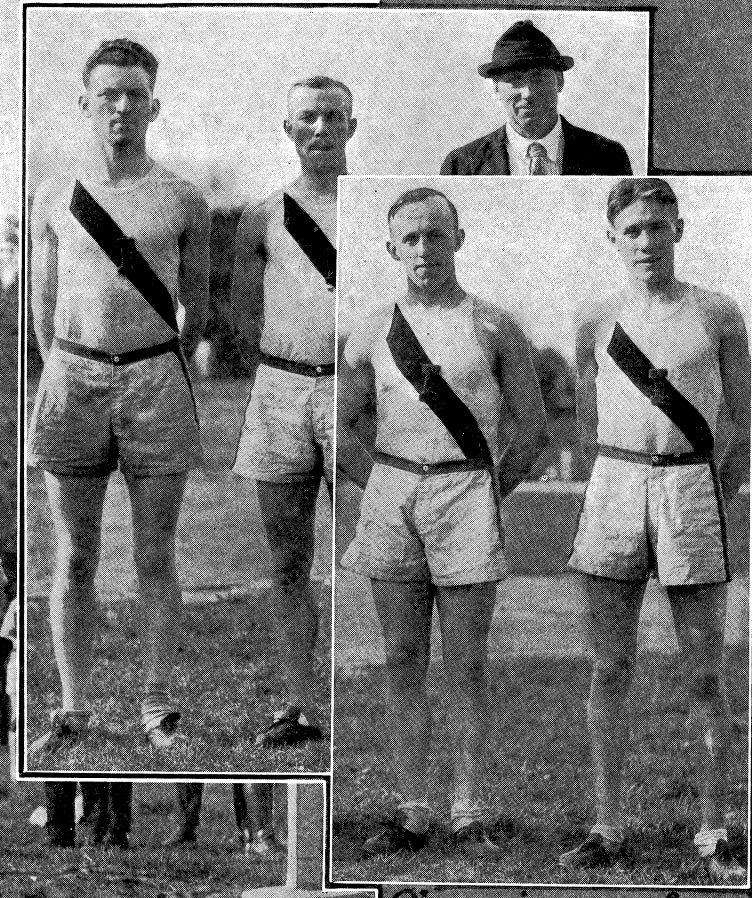
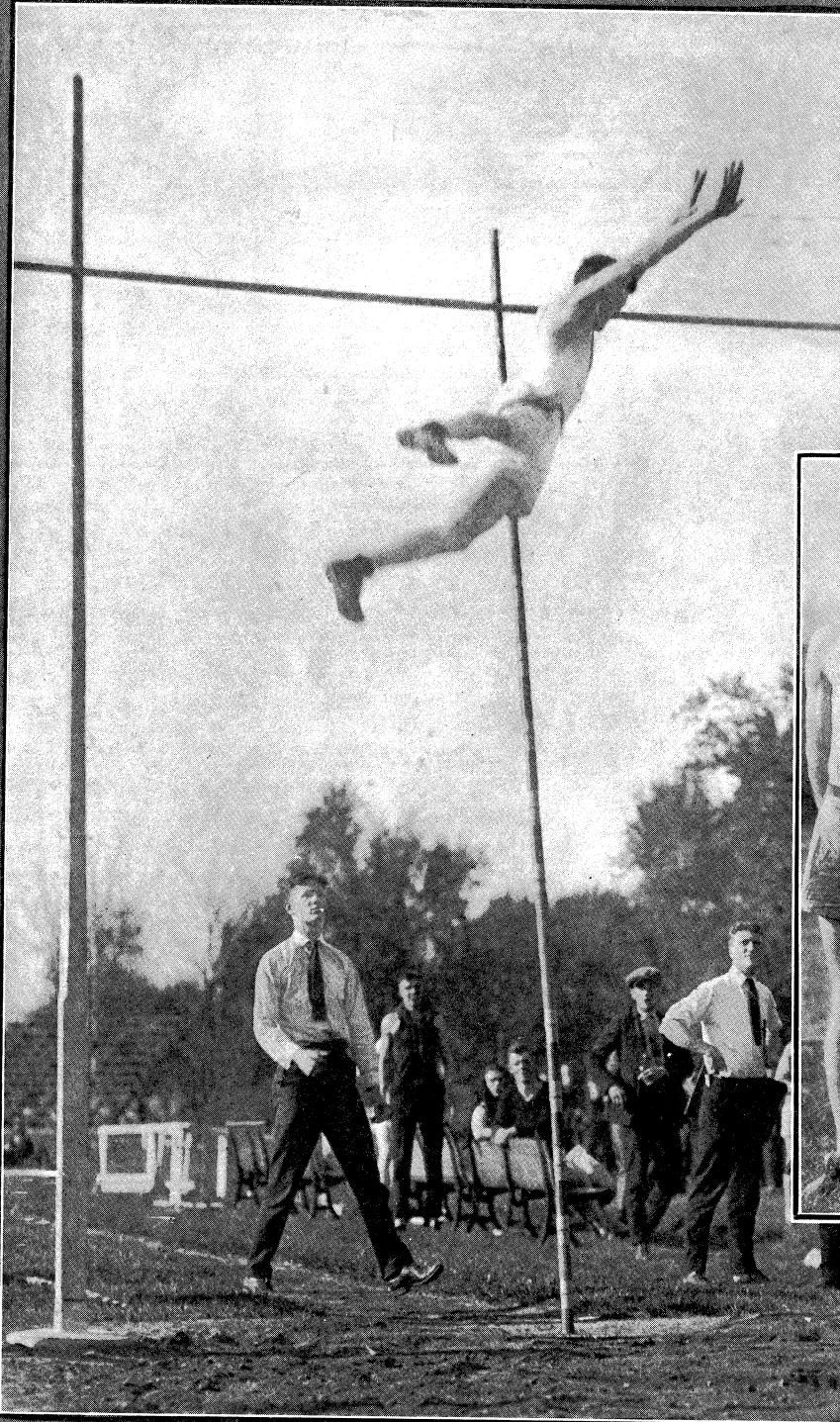
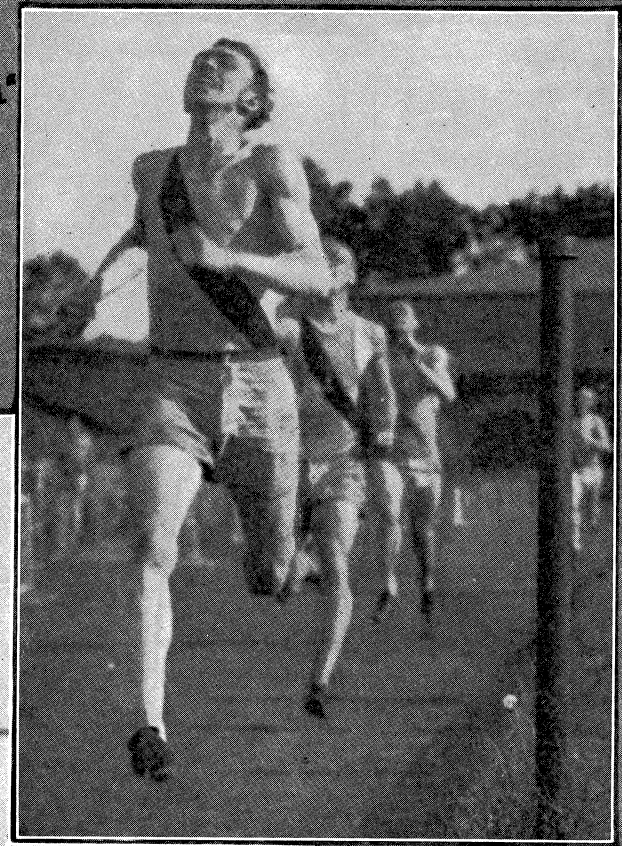


• INTERSCHOLASTIC
• DAY • ON •
• ILLINOIS •
• FIELD •
• 1921 •

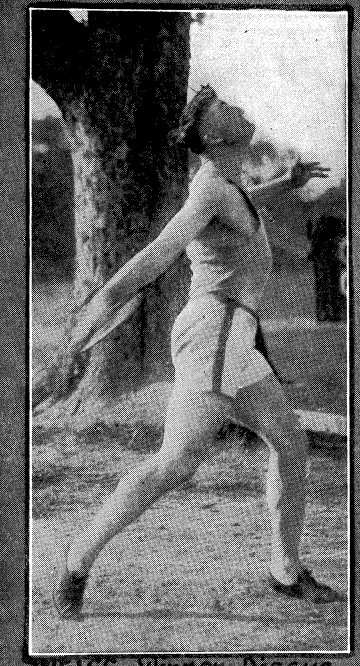


•A Fast Finish•

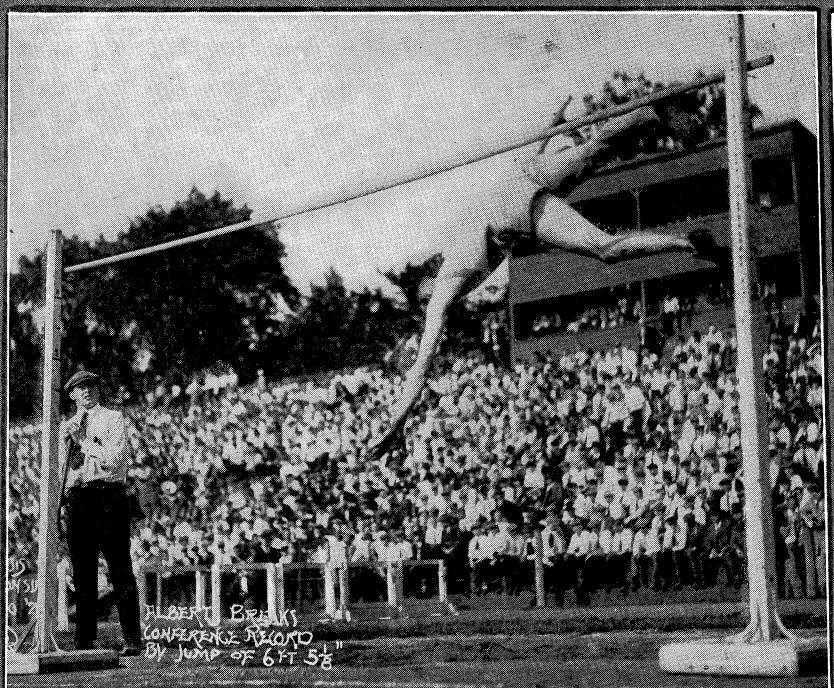
TRACK



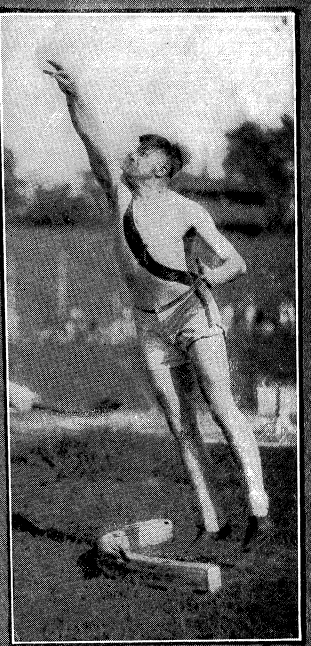
Champions of America
• Medley Relay • 1921 •



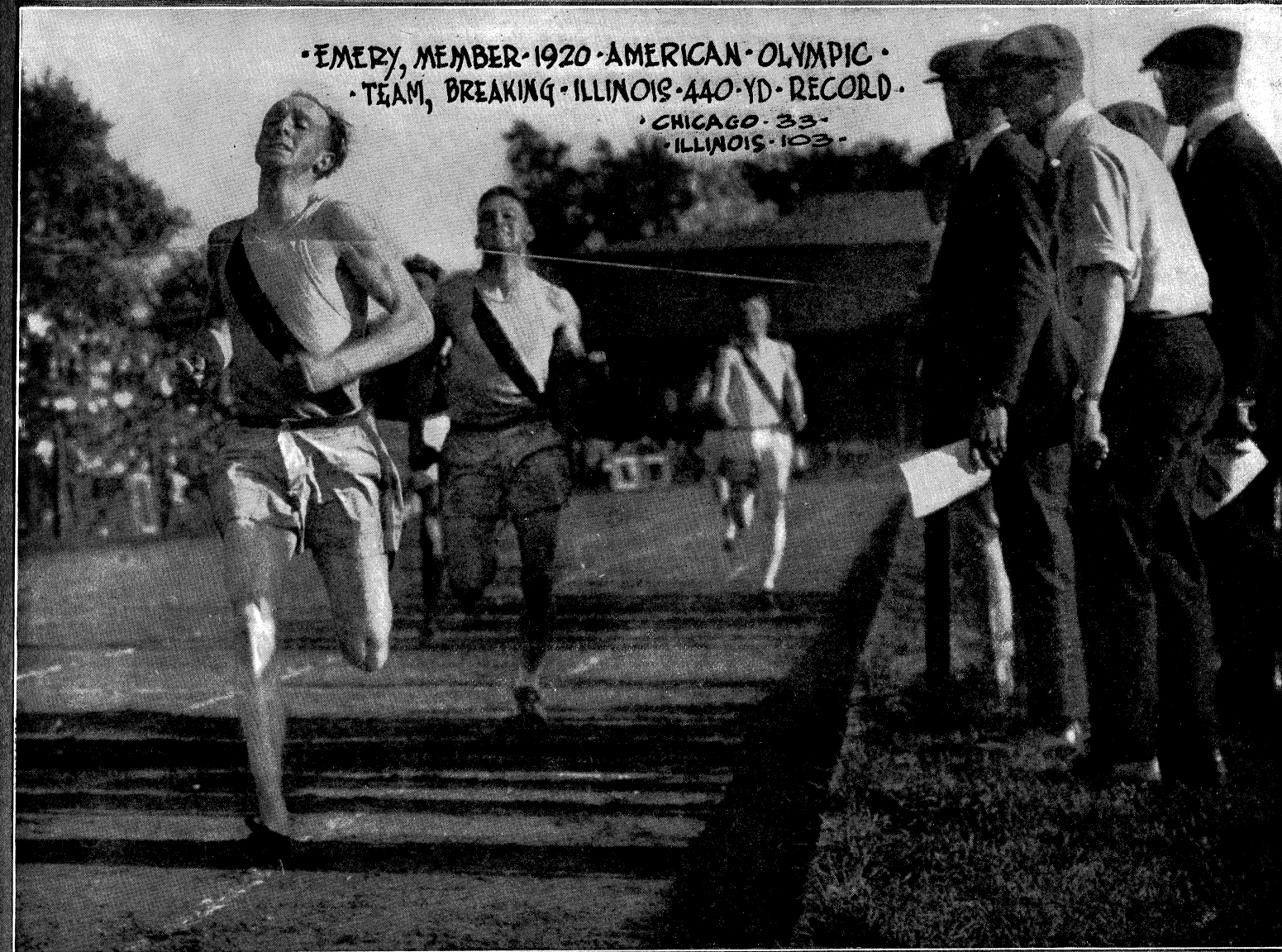
WEISS • Winner Discus
Throw • Penn Games •
• 1921 •



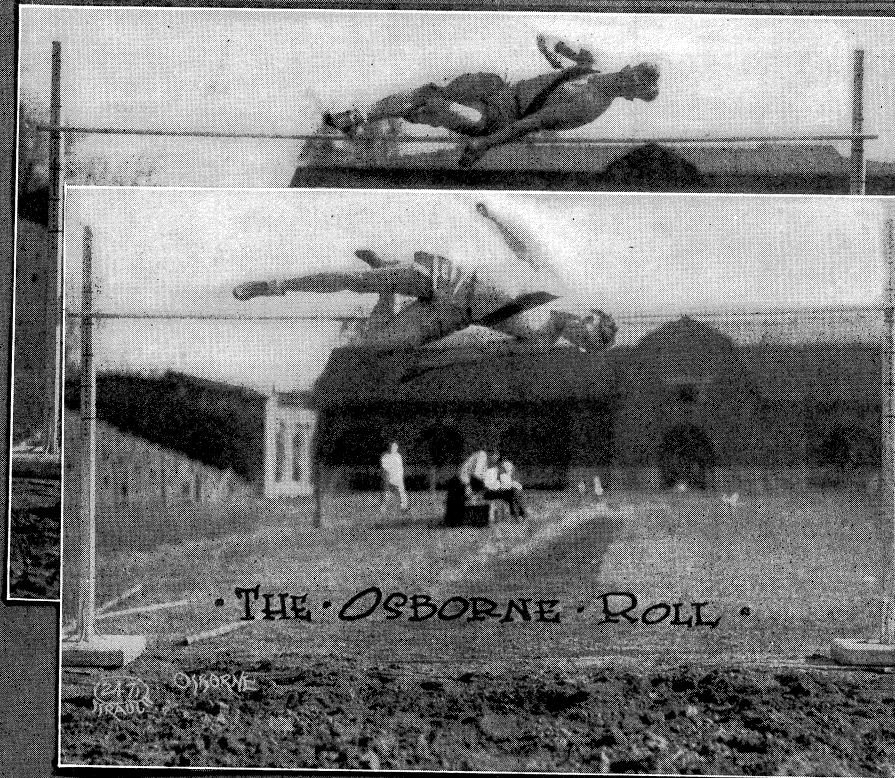
ALBERTS • BREAKS • CONFERENCE • RECORD • 6 FT 5 1/2 IN.
ALBERT BREAKS
CONFERENCE RECORD
By Jump of 6 FT 5 1/2"



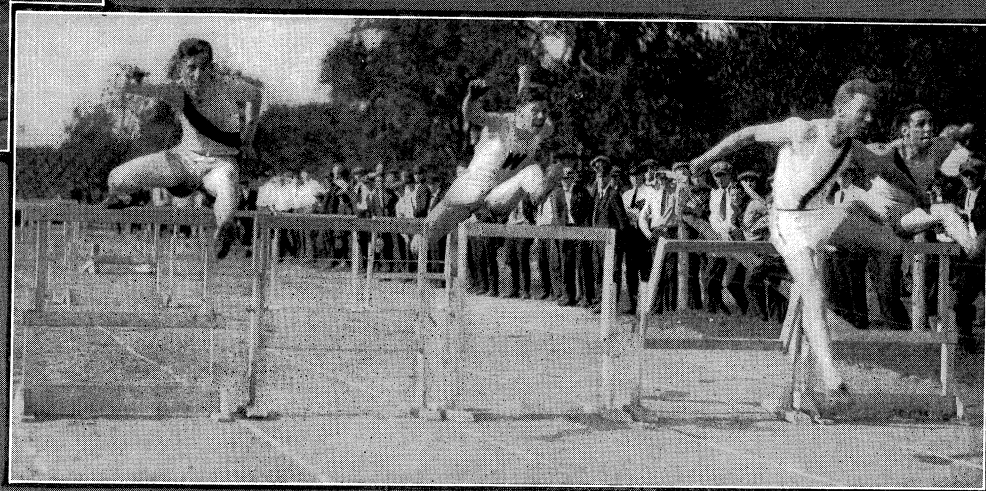
•A Good Pit•



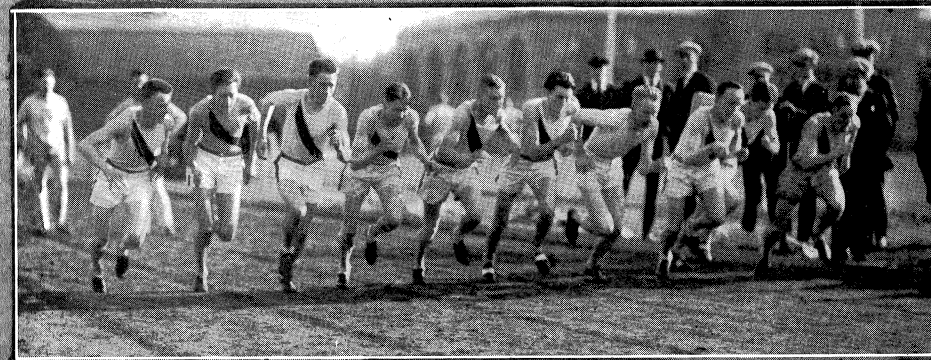
• EMERY, MEMBER • 1920 • AMERICAN • OLYMPIC •
• TEAM, BREAKING • ILLINOIS • 440 • YD • RECORD •
• CHICAGO • 33 •
• ILLINOIS • 103 •



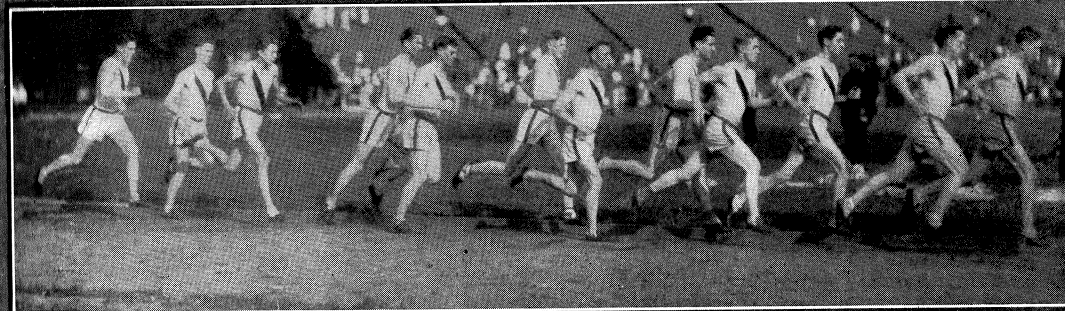
THE OSBORNE ROLL



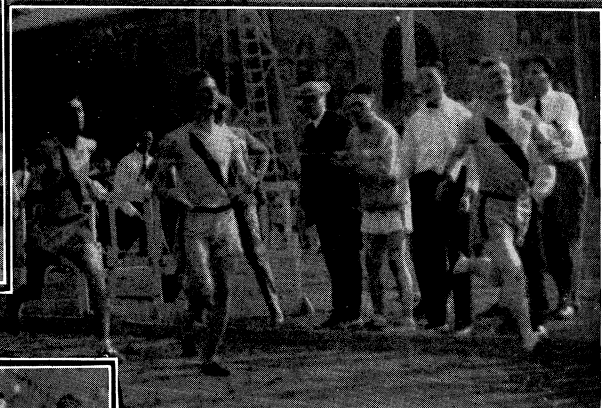
FINISH HURDLES
DUAL MEET
WIS. 36 ILL. 99



START MILE

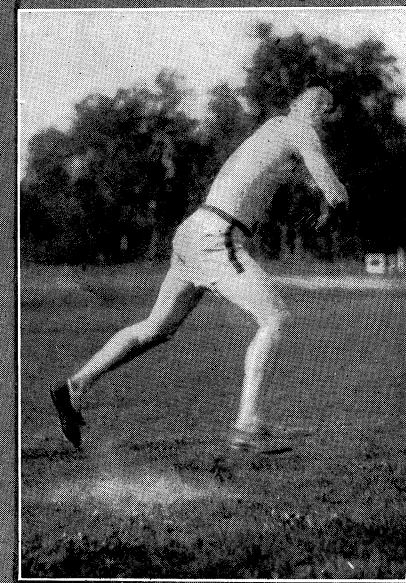


3RD LAP

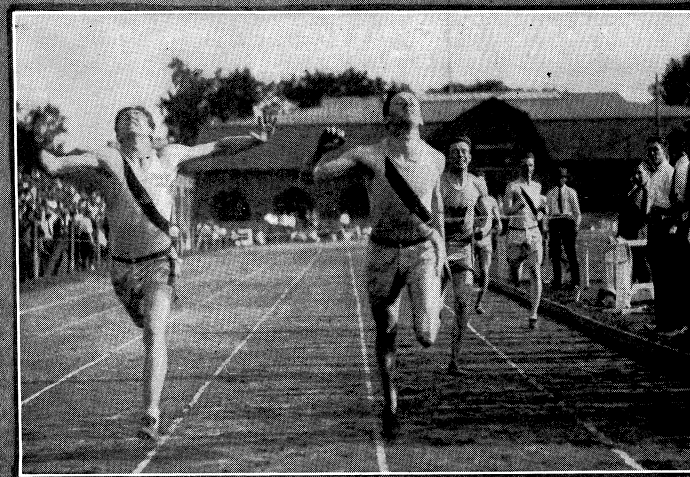


ILLINOIS FINISHES
1ST 2ND 3RD

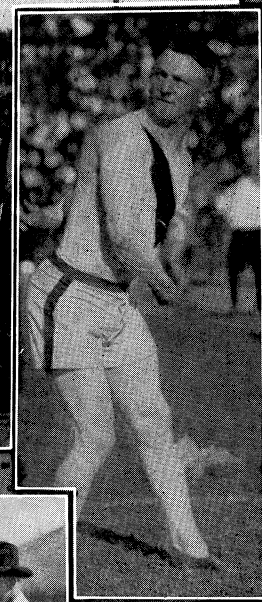
Brade Breaking
Javelin Record - 192 ft. 10 in.



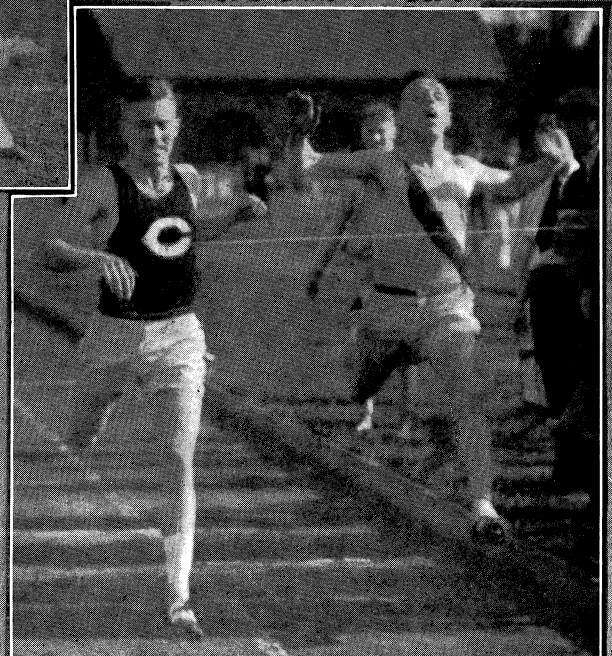
A Close Finish
Yates Illinois First

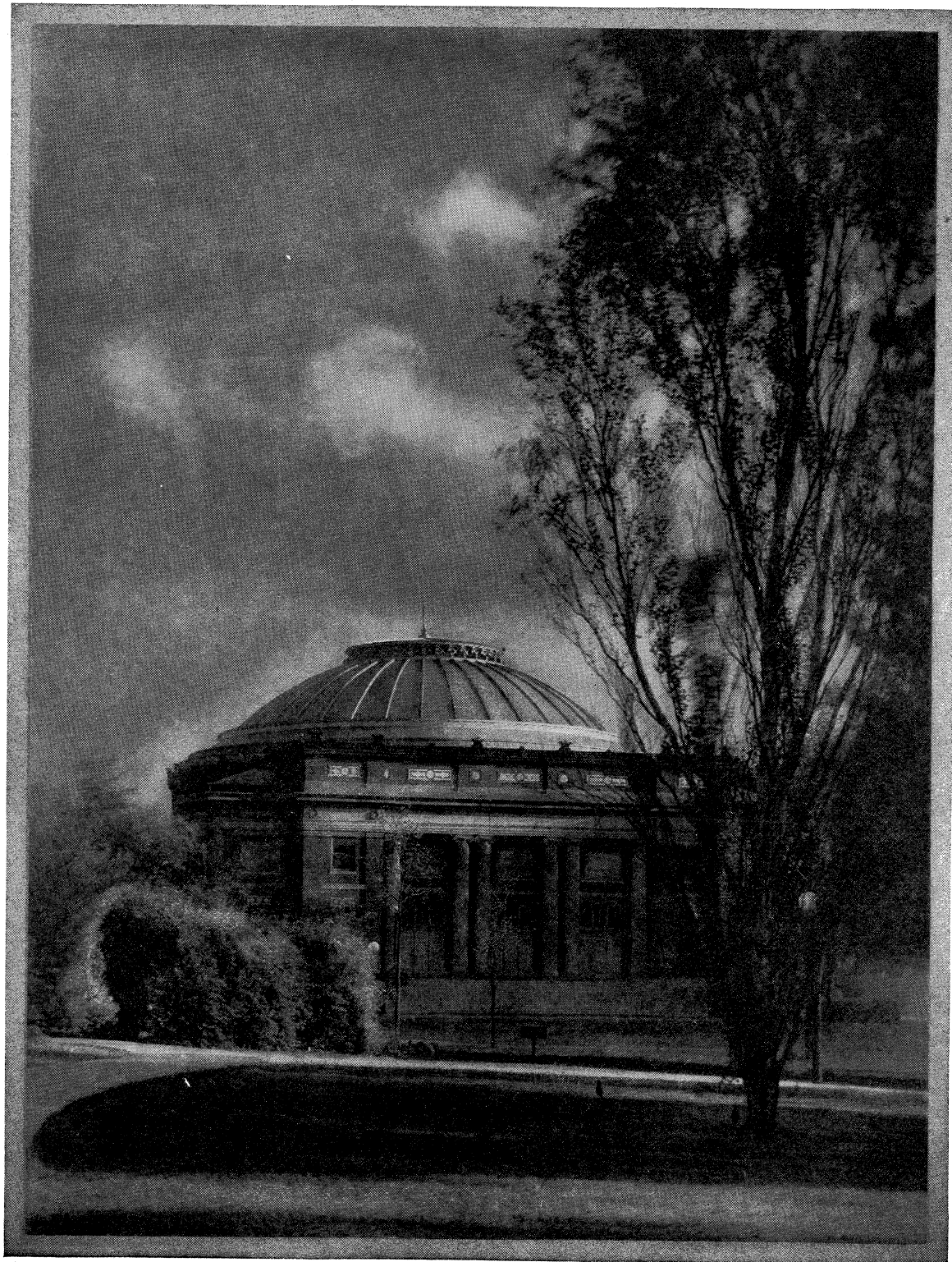


440 yd. Dash Wis. Ill.

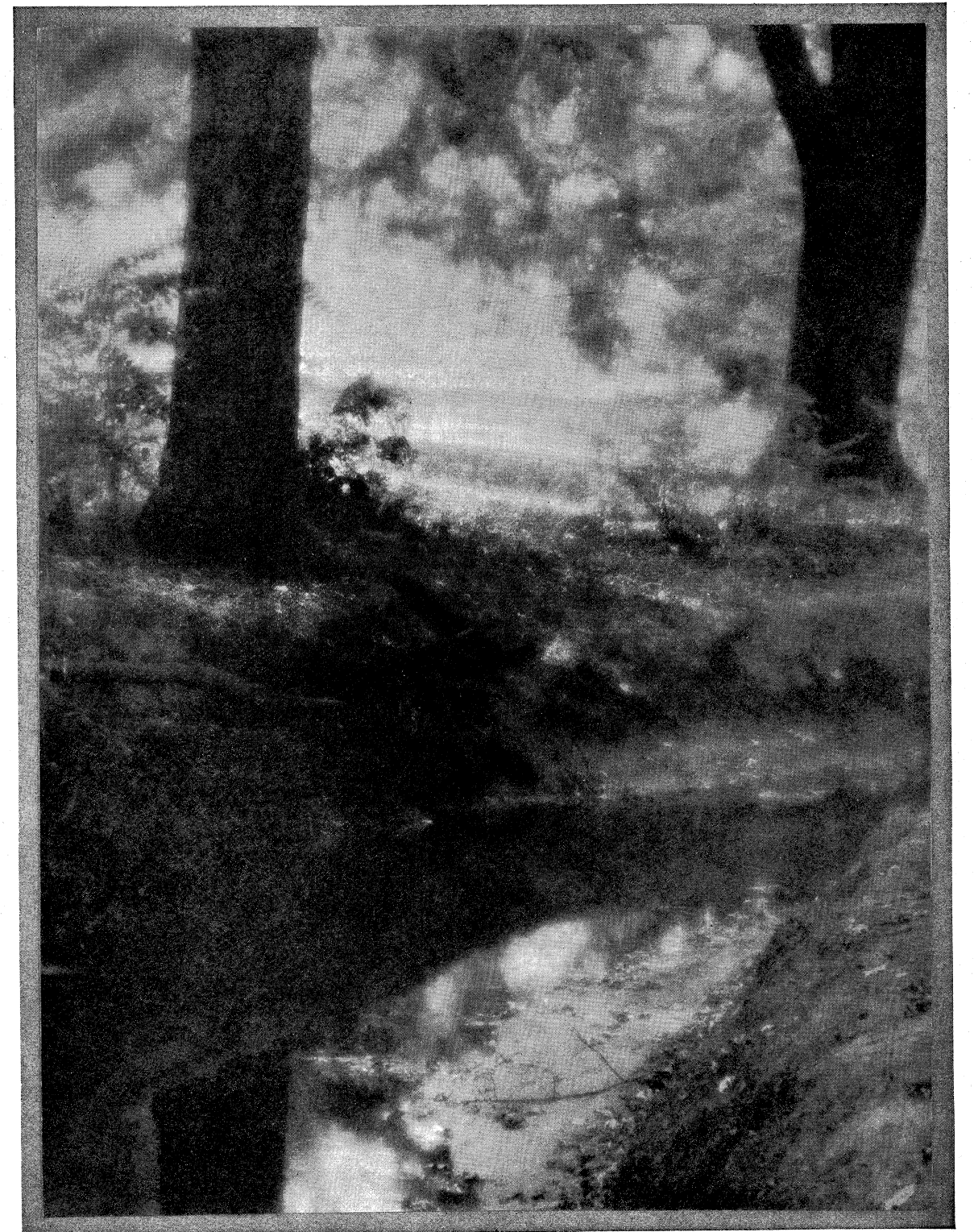


Bennett
Hammer
Throw
Olympic
Games
1920



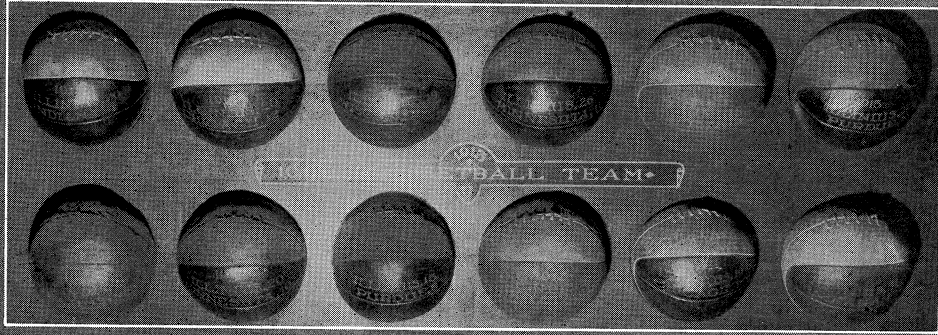


AUDITORIUM



BONE YARD

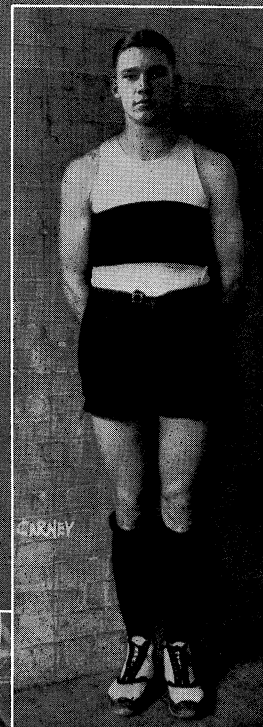
• BASKETBALL •
• 1000% •
• 1915 •



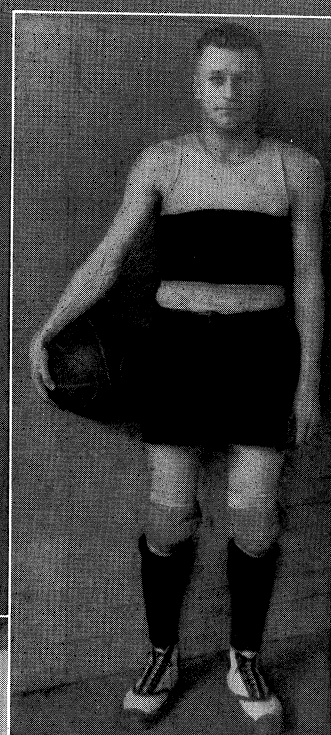
• VAIL •



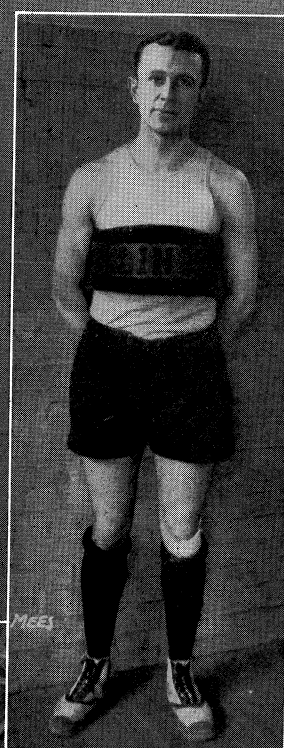
• CARNEY •



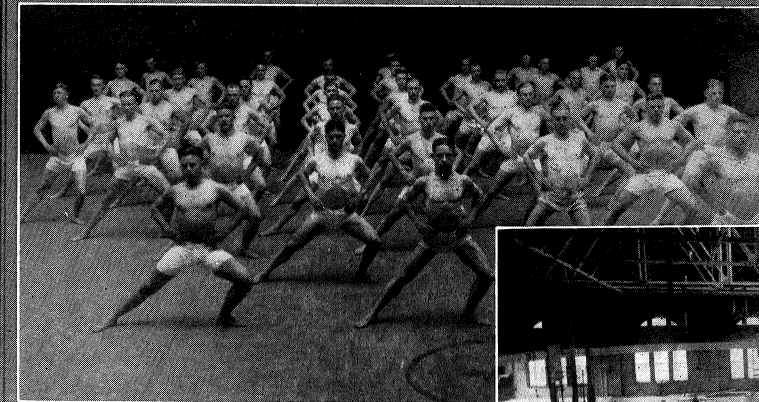
• FELMLEY •



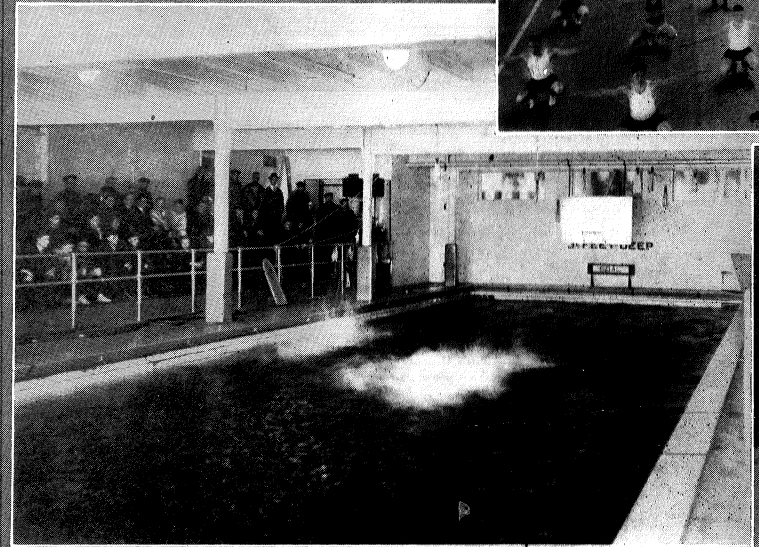
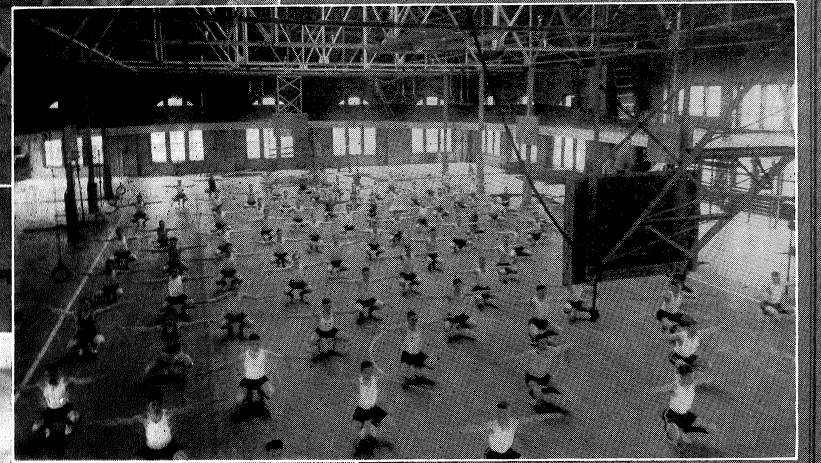
• MEE •



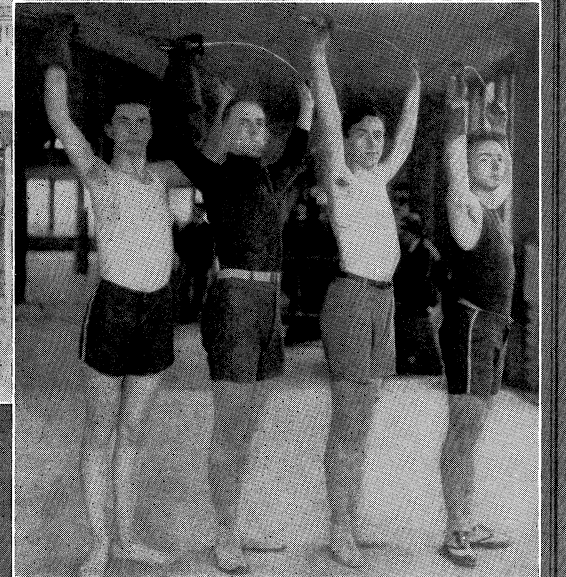
• SECOND OVERTIME PERIOD •
• CHICAGO 31 ••• ILLINOIS 33 •



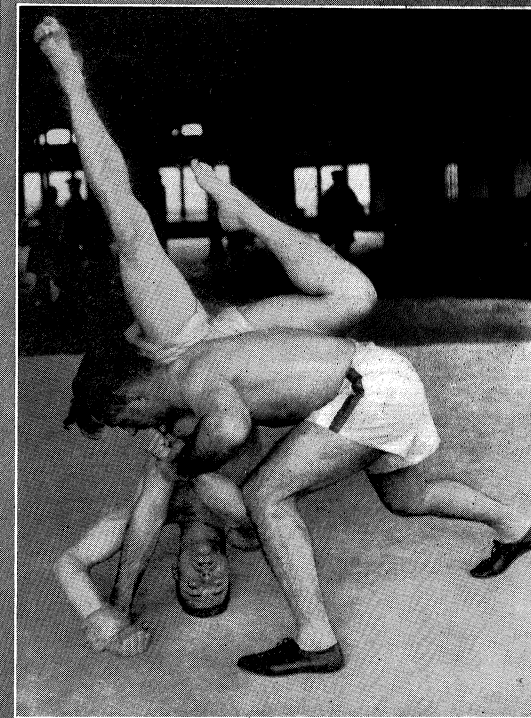
• GYMNASTICS •



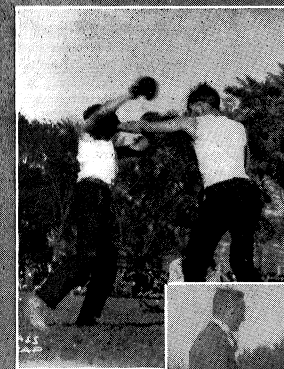
• THE POOL •



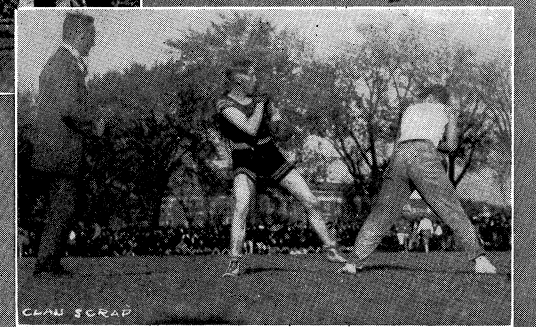
• FENCING TEAM •
• 1920 •



• PREHA •
Wrestler •



• BOXING •

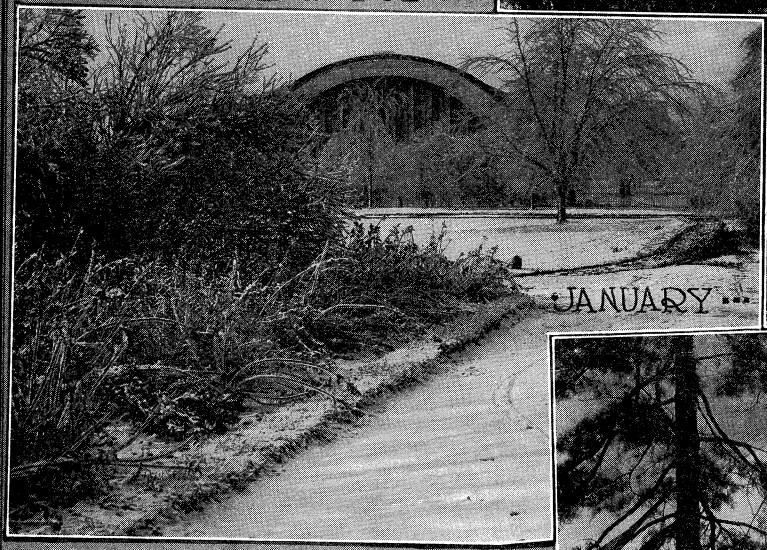


CLAW SCRAP

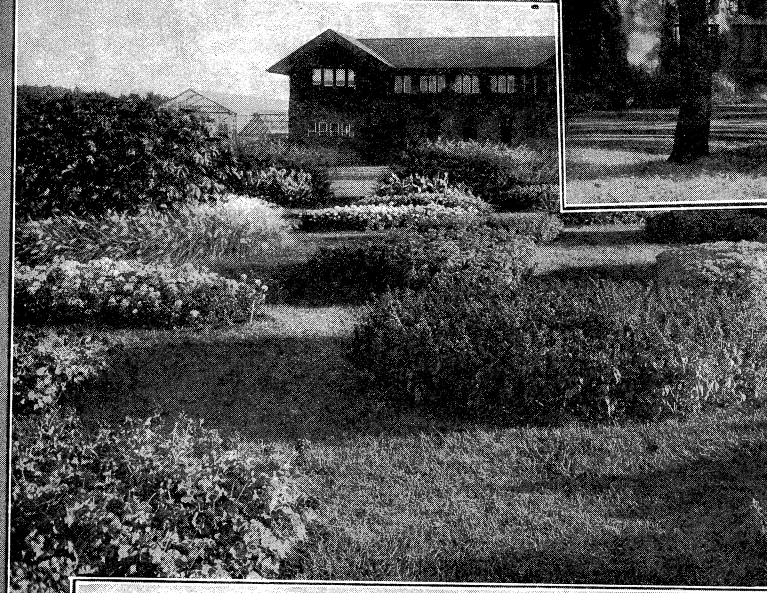
ARMORY



JANUARY MAY



HORTICULTURE GARDENS

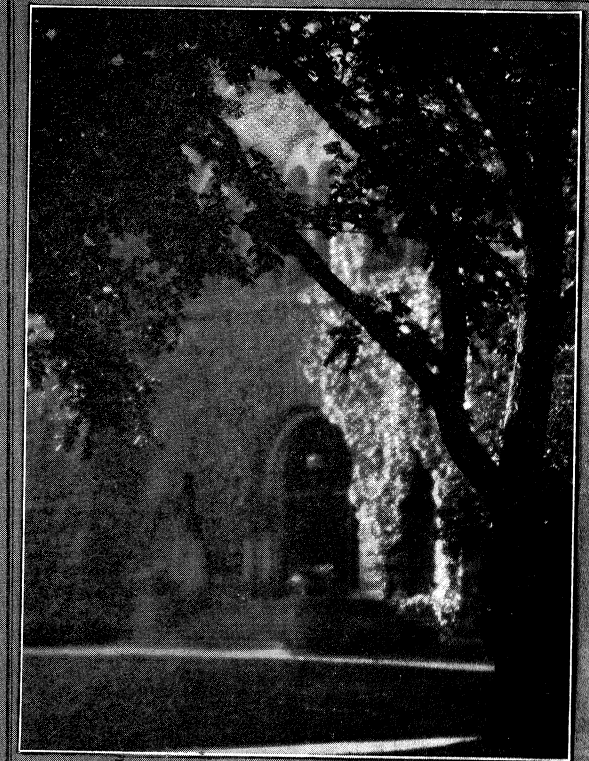


ENTRANCE ARMORY



AGRICULTURE

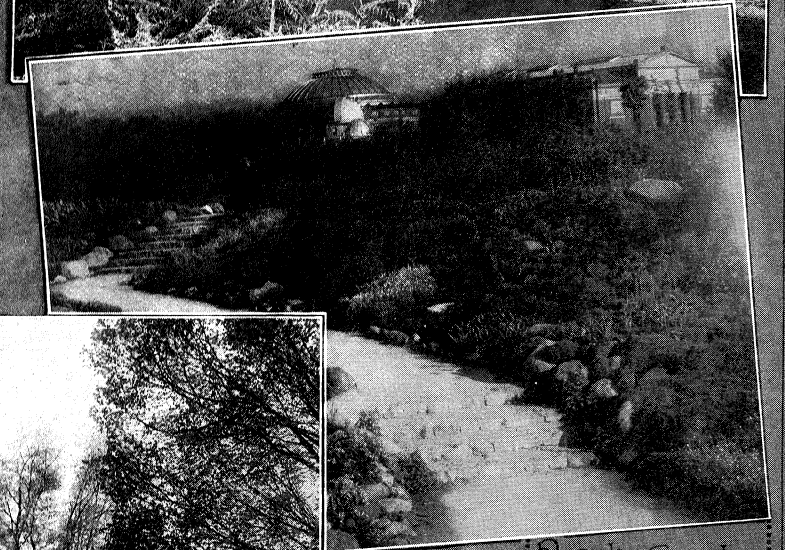
ENTRANCE AGRICULTURE



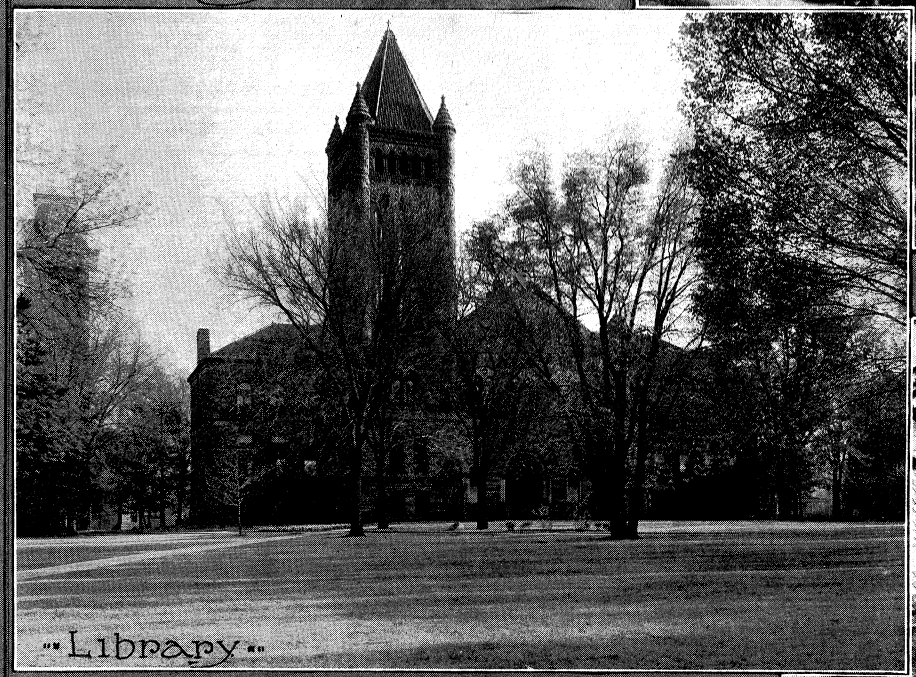
Library Entrance



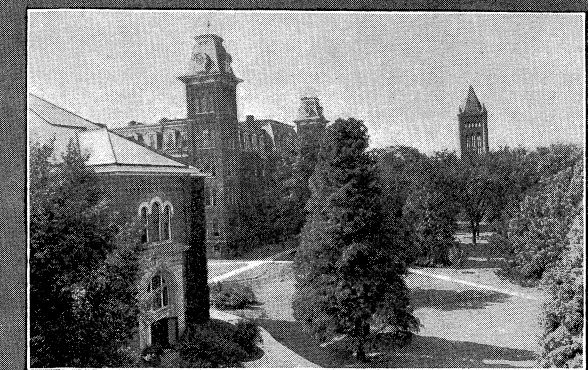
Auditorium



Rock Garden

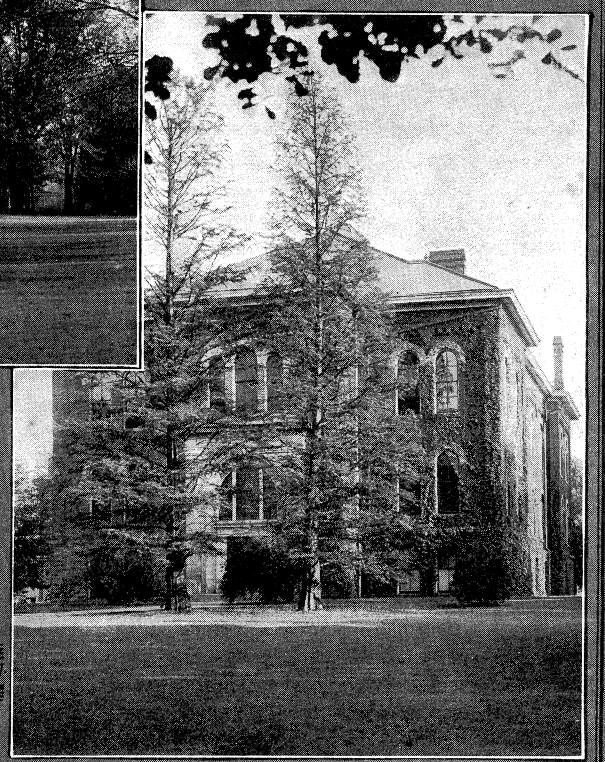


Library



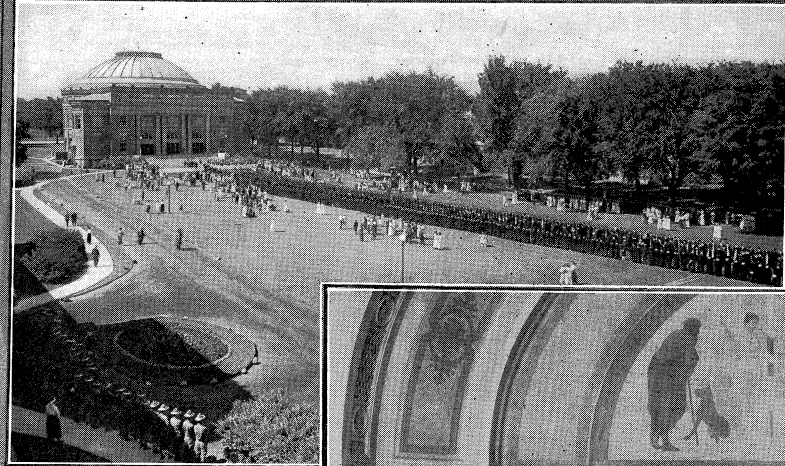
Uni and Library towers

Law

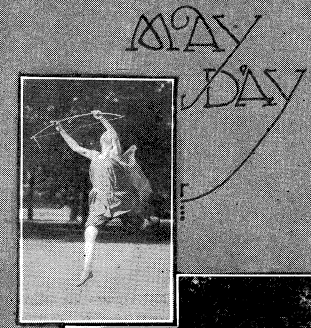
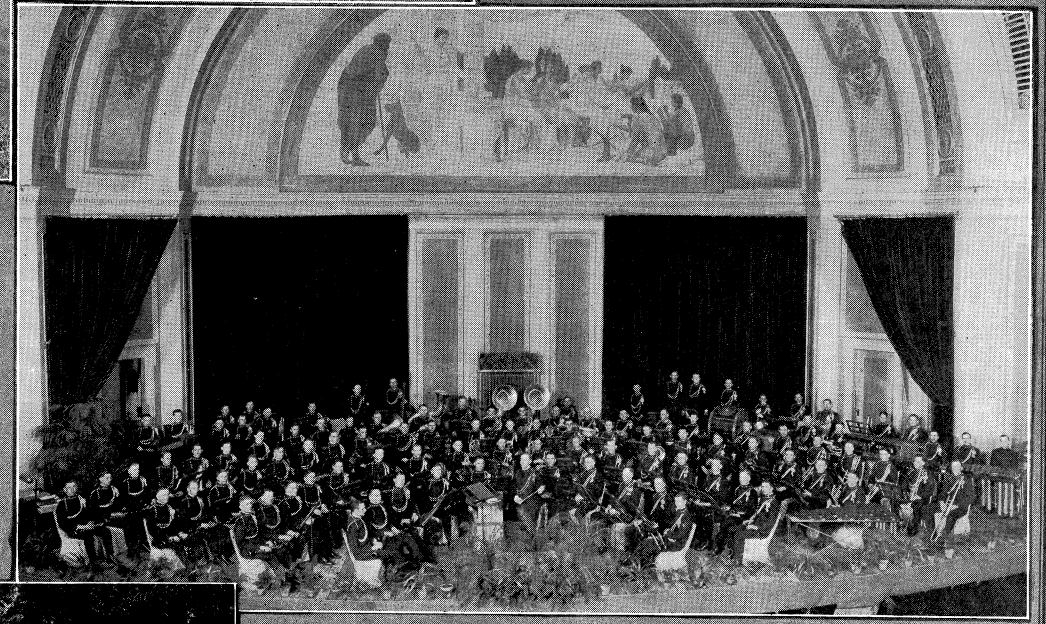


ACTIVITIES

CONCERT BAND



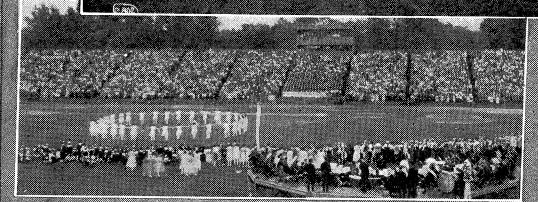
COMMENCEMENT



MAY DAY



GYMNASTICS



FROTH-CAP BURNING



FROTH-CODD SCRAP

