

You are at one of the world's greatest universities, engaged in the threefold activities of education, research, and public service.

The main campus here at Urbana-Champaign covers 637 acres. Adjacent are some 1800 acres of agricultural fields and six miles away is the University of Illinois Willard Airport.

The **Illini Union** is the "front door" of the campus. The Union provides many facilities--lounges, meeting rooms, food services, information, and student activity headquarters.

The first building to your right as you leave the south entrance of the Illini Union is the **Administration Building**. This building houses the Office of Admissions and Records, the President's Office and the Graduate College.

The **Student Services Building** houses the Office of the Dean of Students, Student Counseling and Testing, Housing, Foreign Student Office, and Office of Coordinated Placement.

One block south on Sixth Street from the Student Services Building is the new **Psychology Building**, which was completed in February of 1970.

Back on the **Broadwalk** now, which when crowded with students is one of the most inspiring views on the campus, you see the **English Building** and **Lincoln Hall**. Lincoln Hall houses the College Office of Liberal Arts and Sciences, classrooms, and the Classical and European Culture Museum on fourth floor.

The University Library's collection of materials is the largest of any state University, third among all American Colleges and fifth among all the nation's libraries. More than a million books are circulated every year.

The **Undergraduate Library**, which is connected by a tunnel to the Main Library is located two stories underground. The two structures that you see above ground are used as entrances to the elevators and staircases which take you below ground.

Next to the Undergraduate Library on the east is a cornfield. Probably the most valuable cornfield in the world. It's known as the **Morrow Plots** and has been continuously cultivated in a crop rotation experiment since 1876.

Just north of Morrow Plots and back on the Broadwalk is **Smith Memorial Music Hall**, where the offices for the School of Music are located.

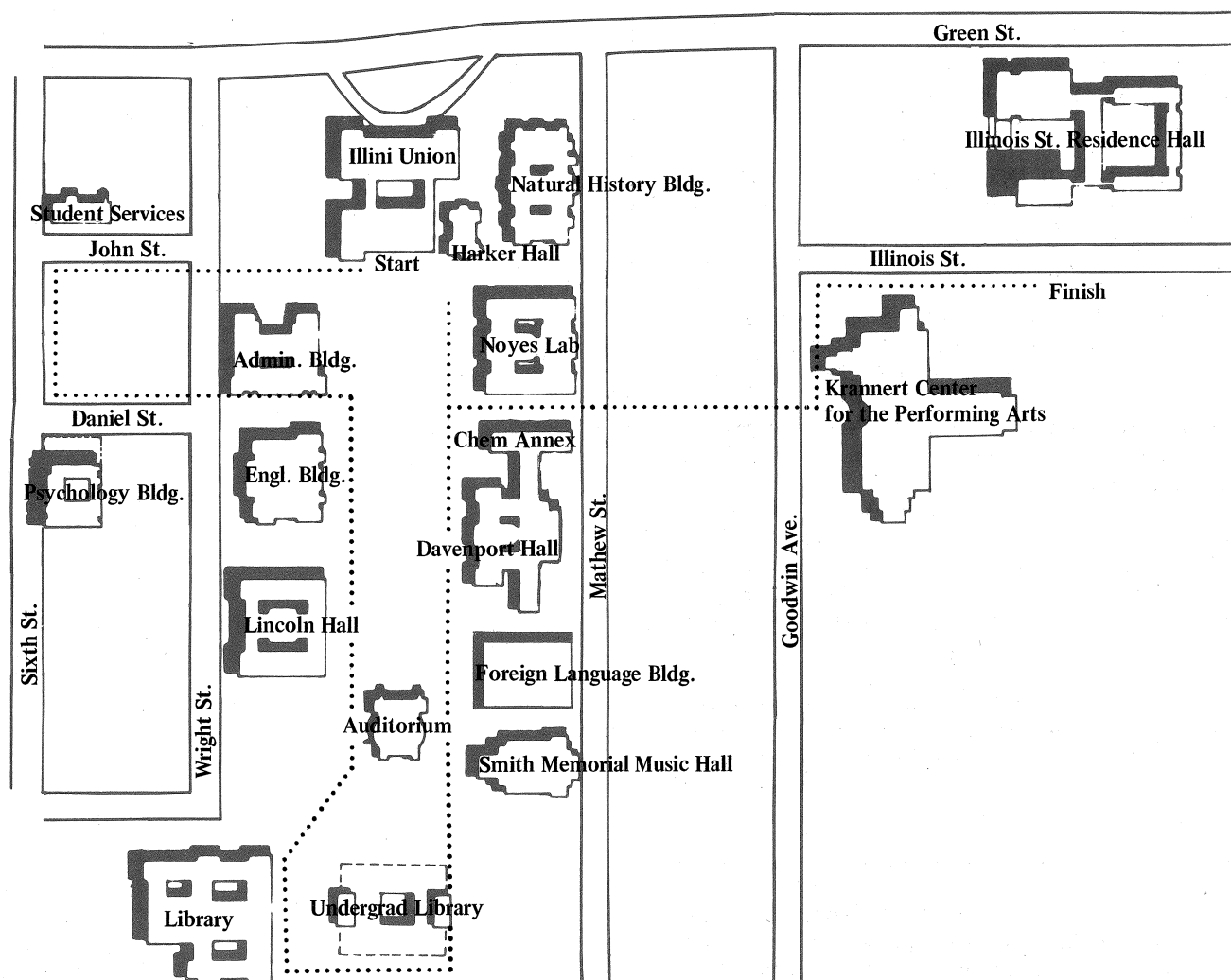
The new building on your right is the **Foreign Language Building**. This building houses departmental offices for many of the foreign languages as well as language labs.

Next on your right is **Davenport Hall**. Anthropology, Geography, and Linguistics offices are in this building. When this building was originally constructed it was the Agriculture Building. Attached is **Chemistry Annex**. North of this is **Noyes Laboratory**. Noyes Lab houses the Department of Chemistry which is one of the University's most famous departments.

Located between Chemistry Annex and Noyes Lab is **Centennial Walkway** which was contributed by the Class of 1917, and constructed in 1968. This walkway will eventually extend to the site of the new Krannert Center for the Performing Arts.

Ahead across the walk from Noyes Lab is **Harker Hall**, oldest classroom building on the campus. It was completed in 1878 and is named in honor of one of the deans of the College of Law.

Beyond Harker Hall is the **Natural History Building**. Geology and Biology have offices in this building. The Natural History Museum with many corridor exhibits and most of the third and fourth floors devoted to Nat-



ural History and native American culture is located in this building.

Back to Centennial Walkway now you will walk to **Krannert Center for the Performing Arts**. The center fills a two square block area. It is partly a gift of Mr. and Mrs. Herman Krannert of Indianapolis. The entire structure was built at a cost of approximately \$21,000,000. Four structures rise above a large underground parking facility. Tours are offered daily.

Across the street from Krannert Center is located one of the University owned Residence Halls, **Illinois Street Residence Hall**. This hall is co-ed with men living in the three five story buildings and women in the high rise structure and a common lounge and cafeteria on the main floor.

Your brief, but, we hope, enjoyable tour is now over. We hope you will come back to visit the University of Illinois often.

OTHER POINTS OF INTEREST:

University of Illinois Airport — located six miles south of Champaign on Route 45.

Horticulture Plots — located on Lincoln Avenue south of Florida Avenue. Flowers bloom from July 1- frost.

Assembly Hall — located on First Street south of Florida Avenue. This multi-purpose event building is open to the public 8:00 a.m. - 5:00 p.m. Mon. - Fri. 9:00 a.m. - 5:00 p.m. Sat. and 2:00 p.m. - 4:00 p.m. Sun.

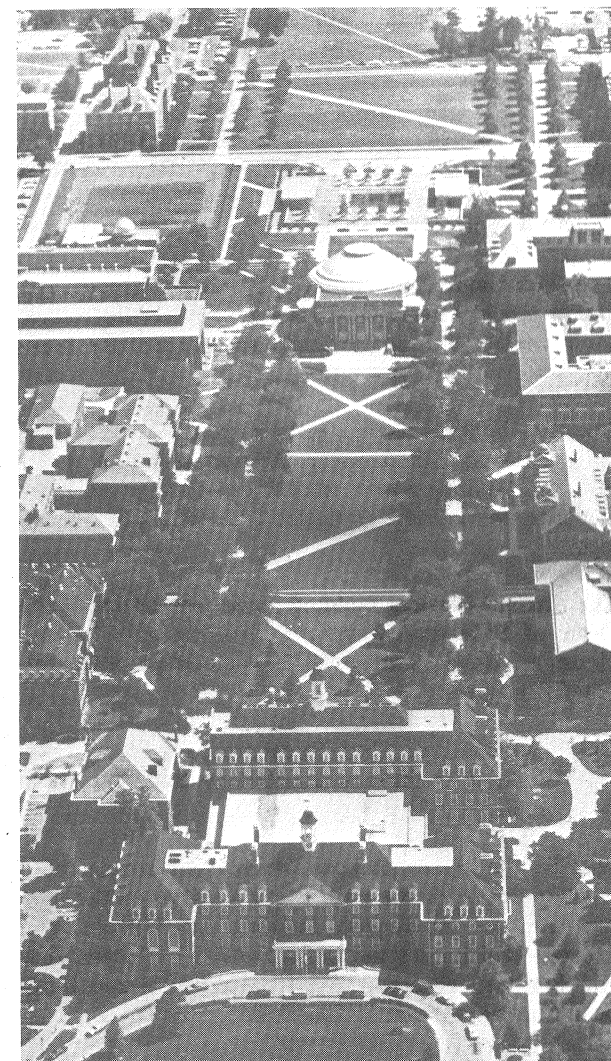
Krannert Art Museum — located on Peabody Drive and Sixth Street is open to the public from 9:00 a.m. - 5:00 p.m. Mon. - Sat.

John Philip Sousa Museum — located in the Band Building on the corner of Gregory and Sixth Streets.

Allerton Park — located 25 miles out in the countryside from Champaign-Urbana. This is a 1500 acre woodland donated to the University by Robert Allerton.

PARKING: Visitors may park in one of the following locations after securing a parking sticker from the Information Office, Room 115, Illini Union: Sixth and John Streets, Fifth and Daniel, and Krannert Center for the Performing Arts lower level.

For guided tours of the campus and specific facilities, contact the Campus Tour Office, Room 115 Illini Union, 333-3668. Tours of campus are offered daily at 10:00 a.m. and 1:00 p.m. by advance arrangement.



A Walking Tour of the University of Illinois Central Campus