

COLLEGE OF AGRICULTURAL, CONSUMER
AND ENVIRONMENTAL SCIENCES

Explor➔ACES

March 12–13, 2010



get **SYN**Ced

 ILLINOIS

Accessibility

All ExplorACES exhibits are accessible, but visitors should note that the floor in the Stock Pavilion is covered with wood shavings. If you need a reasonable accommodation to take part in ExplorACES activities, please call 217-244-4540 by March 5.

Parking

Free parking will be available on both Friday and Saturday in Lot E-14, just west of the Assembly Hall and free shuttle buses will make a continuous loop from the parking lot to the Engineering Open House and ExplorACES (see map on back cover). On Saturday only, visitors may use the parking facility located at the corner of Dorner Drive and Gregory Drive. (On Friday, parking in that facility is for permit holders only, others will be ticketed or towed).



Hey Everyone!

Welcome to ExplorACES 2010!

We are excited you are here to "get **synced**" with all that awaits you at the College of Agricultural, Consumer and Environmental Sciences.


We have over **100 interactive exhibits** for you to explore! As you click through ExplorACES, enjoy a first-hand look at the diverse possibilities available to you.

Take this **opportunity** to connect with college courses, student organizations, housing, and scholarships while at ExplorACES. You never know what treasures await you.

Please refer to this guidebook for information on tours, courses and special presentations, and if you have questions don't hesitate to ask one of the exhibitors.

We hope you enjoy your **adventure** here at ExplorACES and thank you for joining us!

2010 ExplorACES Directors


Mitch Heisler


Chris Francis



Chris Francis, Wilmington, IL
Junior, Farm Management
(ACE)

Being a part of the College of ACES has truly enhanced my experience here at the University of Illinois. There is such a family atmosphere, from Deans and professors, all the way down to my fellow classmates. I have had a lot of wonderful experiences and I am positive that I chose the right place when I chose ACES.



Mitch Heisler, Warsaw, IL
Senior, Agricultural and
Consumer Economics

As a fourth-generation College of ACES student, I have discovered that ACES is a family tradition well-founded in the excellence represented by all who have come before me. From the awesome people and outstanding reputation that ACES carries, I love it here. I really believe that an education from ACES is more than an education, it is an entire experience in learning, leading, living, and launching your future. I am proud to call the College of ACES home, and I hope you'll come join the family!

Table of Contents

College of ACES Campus Map, Accessibility, Parking	inside cover
Letter from Co-Chairs	1
Why Choose ACES?	2
What You'll Find Where	3
Food Service	4
Mini-Classes	6
Welcome to the ACES Library	8
Agricultural and Biological Engineering and Technical Systems Management.	14
Engineering Open House 2010.	17
Agricultural and Consumer Economics	18
Animal Sciences	19
Crop Sciences and Horticulture.	22
Food Science and Human Nutrition	25
Human and Community Development	26
Natural Resources and Environmental Sciences	27
Naturally Illinois Expo.	29
What You Need to Know	30
ExplorACES Steering Committee and Departmental Coordinators	31
ACES Corporate Sponsors and Special Thanks.	32
Shuttle Route and Parking Map.	back cover

Why Choose ACES?

Small community inside a larger university

The College of ACES is home to approximately 2,250 undergraduate students. The size of each department varies from 100-600 students.

Outstanding scholarships

Each year, ACES awards \$1.1 million in need and merit-based scholarships.

Career building opportunities

ACES Career Services helps students find internships and land job interviews. Resume writing workshops and interview practice sessions give ACES students a competitive edge.

Academic resources

The ACES Library features computer labs, group study rooms, and plenty of resources for research projects.

Undergraduate research opportunities

The ACES Research Scholarship Program encourages students to conduct research in a broad range of disciplines solving practical problems. Check out the exhibits throughout ExplorACES.

Leadership development

ACES Student Council and more than three dozen organizations offer ample opportunities for students to build leadership skills. Students can earn a leadership certificate and participate in free leadership programs through the Illinois Leadership Center.

Outstanding faculty

Award winning faculty in research and education provide the foundation for an excellent education. 95% of classes in the College of ACES are taught by faculty members or academic professionals.

Accessible administration

Through the "Lunch with the Deans" program, students have the opportunity to get to know the college administration. Many of the Assistant Deans also serve as advisors for student organizations.



Don't know where to start?

We encourage you to use the ACES Library as your starting point for your visit here on campus! You'll find just about everything here, whether you learn more about our majors, housing options, financial aid, mini-classes and James Scholar projects. There will also be plenty of exhibitors and faculty on hand to answer any questions you have.

Take a Tour!

Let the members of the Student Advancement Committee show you around campus! Tours will depart from the ACES Library as requested and last about 30 minutes.

Looking for a Specific Degree?

LOOKING FOR...

Agricultural and Consumer Economics

Agricultural and Biological Engineering

Agricultural and Environmental Communications and Education

Animal Sciences

Crop Sciences

Food Science and Human Nutrition

Horticulture

Human Development and Family Studies

Natural Resources and Environmental Sciences

Technical Systems Management

FIND IT HERE...

ACES Library

Agricultural Engineering Sciences Building, Engineering Open House (north end of UI campus)

ACES Library

Animal Sciences Lab, Stock Pavilion

Turner Hall, Plant Science Lab & Greenhouses

Bevier Hall, Agricultural Engineering Sciences Building

Plant Science Lab & Greenhouses

Bevier Hall

Turner Hall

Agricultural Engineering Sciences Building, Engineering Open House (north end of UI campus)

Hungry? Come to the Food Tent!

Friday: 9 am – 1 pm

Saturday: 10 am – 1 pm

Come warm up and try our award-winning chili at the ExplorACES Food Court on the west side of the ACES Library! This is a great chance to 'get synced' with current students and faculty members... and enjoy some great food!

Sync in Progress

Welcome to the **food page!** Sit back and let your mind be free as you immerse yourself into the world of a premiere university. With resources waiting at your disposal, the University of Illinois is proud to give you a link to one of the finest colleges in the nation, the **College of ACES**. We welcome you to enjoy great tasting, stomach-warming food in the last days of winter as student volunteers from all sides of campus come together to cook this hearty meal for you. We hope you are as excited as we are to have the opportunity to interact with professors and students. **Open your mind** to the wonders of this wonderful two-day event and **'sync'** the information we provide for you!

Make sure to check out the "How to Prevent the Freshmen 15" poster inside the Food Tent!

Hungry?

Food Tent hours Friday and Saturday:

After 9am: coffee served

11am – 1pm: lunch

Be sure to visit the food tent, just west of the ACES Library, open from 11 am to 1 pm on Friday and Saturday for lunch! ACES student clubs will be serving food. Don't miss out on this opportunity to chat with current students, professors and alumni, all while enjoying a delicious meal! Stop by after 9 am both mornings and grab a cup of coffee before you adventure around ACES!

ACES is a college that allows students to grow through academics, leadership and networking with great students, renowned faculty and industry professionals. It is a rich environment and I am thrilled to be a part of it.



Landon Frye, Easton, IL
Sophomore, Ag Accounting

Food Tent Menu

Beef Chili

Soy Chili

Pork Meatloaf

Baked Potatoes

Mix Steamed Vegetables

Soy Cookies

Lemonade / Water

Coffee served all morning



Jean-Louis Ledent, Executive Chef

After my 4-year culinary program in a cooking school in Liege, Belgium, I opened my first business at age 24. Six years later, my wife, our 2 daughters and I moved to the United States. In 1988, I bought a business called “The Embassy” in Arcola, Illinois and renamed it “The French Embassy.”

“The French Embassy” gained national recognition as the only French Restaurant in a bowling alley in America! My business was highlighted in national newspapers and magazines. In 1998, I closed “The French Embassy” in Arcola and moved the business to Urbana, until February 2003. In August 2004, the Food Science and Human Nutrition Department hired me as Executive Chef / Food Service System – Quantity Food Lab Manager of their student-run cafeteria called the Bevier Café. I started to make some major changes in the system and took complete control of the kitchen production. I kept improving the quality of the food served in the Café and acquired a total control over purchases and inventories. I also re-developed our catering services with the students. I enjoy sharing my expertise and knowledge with the young leaders of our industry.

Bevier Café Catering is connected with the Quantity Foods Lab in the Department of Food Science and Human Nutrition. The student-run Café and Catering is associated with several of the Hospitality Management and Dietetic courses. We offer an outstanding selection of food, beverages, and services. From early morning meetings and breakfasts to working luncheons and afternoon receptions, you will find our services are versatile and accommodating to your budget.

While our current menus are filled with standard items, we are available to customize your event and add that extra touch that you desire. This could include working with local farmers, theme meals, etc.

As part of the University of Illinois, we are a nonprofit and educational department. We are a self-sustaining laboratory; any income we receive is returned directly to our operation and educational program.

We look forward to working with you on creating a special event to remember. Please email ledent@illinois.edu to schedule an appointment or book an event.



Mini-Classes

Take one of these short “mini-classes,” where you will find hands-on activities and learn more about your major!

Learn more about Undergraduate Admissions!

Monsanto Room, ACES Library

Questions about the application and acceptance process? The Office of Undergraduate Admissions has the answers plus a wealth of resources for parents and students. Learn more by attending presentations for prospective students on Friday at 2 pm and Saturday at 12 pm and for admitted students on Friday at 3 pm and Saturday at 1 pm, or visit www.admissions.illinois.edu.

Transfer Students

Suite 115, ACES Library

The College of ACES would like to welcome you to a special session just for you. Please join us at 11:00 am on Friday, March 12 or Saturday, March 13, 2010 in the ACES Library Suite 115. You can also gain valuable information at futurestudents.aces.illinois.edu/transfer.

Agricultural and Consumer Economics (ACE)

Financial Planning for Your Future

ACES Library, Room 22 on Friday at 10 am

Listen to Professor Braden, a professor in the ACE department, discuss the importance of financial planning and how what you do now affects your future in a typical classroom atmosphere.

Animal Sciences

Roaming the Rumen

Stock Pavilion on Saturday at 11 am and 1 pm

“Roaming through the Rumen” features the important role a complex stomach (rumen) plays for dairy, beef, and sheep. Come out and evaluate rumen structure with “Fred” the steer rumen, learn about rumen volatile fatty acid production, and understand rumen disorders that veterinarians will need to treat. A fistulated dairy cow will be present to explore the actual inside of a dairy cow’s rumen for a “hands-in” experience.

Dr. Hurley’s Magical Milk Lab

131 Animal Sciences Laboratory on Friday at 12 pm

Discover the marvel of milk with Dr. Hurley, Professor of Animal Sciences. Get ready for an interactive session on the art of butter making, milk extraction and much more!

Presented by Dr. Walter Hurley

Horse Behavior and Training

Monsanto Room, ACES Library on Friday at 1 pm

The lecture “Horse Behavior and Training” will present the unique ways that horses see their world, how they perceive human handlers, and the best ways to gain a horse’s trust. It will also show how horses communicate using their body language and how to recognize these signals. These basic concepts will then be applied to specific techniques for handling legs in resistant horses and trailer loading.

An Overview of Animal Handling

Monsanto Room, ACES Library on Friday at 11 am

“Overview of Animal Handling” presents the basics to any great animal-handler relationship. This class gives a taste of an Animal Sciences class taught every semester teaching the basics to working with farm animals. The main focuses will be on beef cattle, dairy cattle, sheep, swine, and chicken. Come learn a few key insights into livestock handling!

Crop Sciences

CSI: Crop Sciences Inquiry

W-109 Turner Hall on Friday at 9:30, 10:30, 11:30, 12:30, 1:30, 2:30; Saturday at 10:30, 11:30, 12:30, 1:30

Investigate crop sciences and test your knowledge of plants, agronomy, horticulture and agriculture. Explore the facts and fallacies using “I-clickers,” which poll the audience. The mini-class will last about 20 minutes.

A Day in the Life of a Crop Sciences and Horticulture Student

W-209 Turner Hall on Friday at 11 am and 1:30 pm, Saturday at 11:30 am

Get connected with information about Crop Sciences and Horticulture. Get answers about Crop Sciences and Horticulture questions from advisers and current students.

Floral Design to Music

1125 PSL on Friday and Saturday at 11 am and 1 pm

Get synced with one of ExplorACES’ most popular exhibits! Watch as students interpret music to create eye-catching floral design.

Get Synced with Chocolate!

1125 PSL on Friday and Saturday at 12 pm

Dr. Skirvin is in sync with chocolate from all parts of the world. Learn about cacao and everything chocolate. Join us for a taste-testing adventure with Dr. Skirvin!

Food Science and Human Nutrition (FSHN)

Food Chemistry: Protein Structure and Functionality

132 Bevier Hall on Friday at 10:15 am

Why do egg whites change from transparent to opaque when heated? Why does cream become a fluffy and delicious treat when whipped? Come learn about the chemistry behind these changes in food.

Presented by Dr. Dawn Bohn

Eating Healthy in the Dorms

328 Bevier Hall on Friday at 1:30 pm

Worried about the Freshman 15? Have special dietary needs? Come learn from the Nutrition Peers student group about ‘Eating Healthy in the Dorms!’

Natural Resources and Environmental Sciences (NRES)

Working with Birds of Prey

W-109 Turner Hall on Friday and Saturday at 11 am

Meet hawks, owls, and the people who rehabilitate them at the Wildlife Medical Clinic. Learn more about careers in wildlife conservation.

A Day in the Life of an NRES Student

N-527 Turner Hall on Friday at 10 am and 2 pm; Saturday at 11 am

Talk to NRES undergraduate students and get the real scoop on the joys and challenges of majoring in NRES at Illinois.

Environmental Entrepreneurship: Developing an Illinois Carbon Registry

W-115 Turner Hall on Friday at 10 am and 1 pm; Saturday at 10 am

The analysis of the environmental impacts of human activities is a complicated, but increasingly important, task. Students in NRES 294/499 Carbon Registry Internship are building those skills and developing a business model for implementing an Illinois Carbon Registry. Join us to learn more!

Create Your Own Edible Soil Profile

W-115 Turner Hall on Friday at 10:30 am and 1:30 pm; Saturday at 10:30 am

Like playing in the dirt? Well, you will after learning more about soil in our interactive and edible activity. You will be able to build a soil profile by layering different colors of puddings, representing different soil horizons and top them off with M&M “rocks,” grass-colored coconut shavings, and gummy worms.

Welcome to ExplorACES!

If you are visiting ExplorACES with a class or other group, we encourage you to use the **ACES Library** as your gathering place when it's time to meet up for the trip home. This will be a great place to kick off your day at the College of ACES! Here you will find departmental displays, certified housing options, financial aid information, and just a few of the student organizations we offer! This is also a great chance for you to 'get synced' with our exhibitors and faculty members!

ACES Campus Tours: Walking tours will be given by the members of the Student Advancement Committee. Tours will depart from the ACES Library as requested and last about 30 minutes.

Atrium

You will enter the atrium upon your entrance to the ACES Library. Here you will find Student Advancement Committee members giving tours as needed, the James Scholar Booth, and some research from our very own James Scholars. Be sure to visit their posters in the atrium!

*Cassie Becker, Carlyle, IL
Junior, Agricultural
Communications*



James Scholar Posters

Make Up Your Mind...and Your Benefits Plan

Financial Education in the Workplace

Application of FRET-Based Biosensors to Cancer Cells

Feline Upper Respiratory Infections in Shelter Settings

Conceptual Behavior in Horses: Associations and Equivalence through Matching to Sample with Differential Outcome

The Effects of Alternative Keeping Systems on Gestating Sow Well-Being

Toxoplasma Gondii Infection in Mice and Voles at Robert Allerton Park

The Effects of Water Quality on Orchids

Miscanthus X Giganteus Rhizome Soak Treatment Study

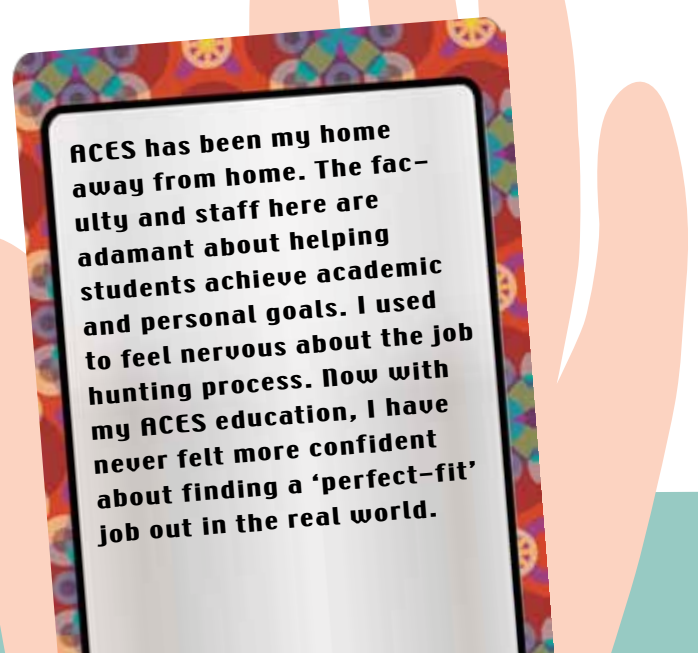
Prostate Cancer Intervention with African-American Men in Illinois

The Relationship Between Dietary Advanced Glycation End Products and Indicators of Diabetes Severity in Hispanic and Non-Hispanic Whites

Healthy Outcomes for Teens (HOT) Project: Evaluating the Effects of Interactive Online Games on Knowledge, Self-Efficacy, and Outcome Expectancies Linked to Type 2 Diabetes

Brotherly Love and Sisterly Struggles: Problem-Solving Strategies for Siblings

Weathering in Arctic Environments: Investigating Iron Films Using Scanning Electron Microscopes



ACES has been my home away from home. The faculty and staff here are adamant about helping students achieve academic and personal goals. I used to feel nervous about the job hunting process. Now with my ACES education, I have never felt more confident about finding a 'perfect-fit' job out in the real world.

ACES Departments

Department of Animal Sciences

Heritage Room, ACES Library

The Department of Animal Sciences has the following concentrations within the major of Animal Sciences: Animal Business, Management and Industry, Companion, Recreational, Laboratory Animal Science, Biotechnology, Pre-Vet Medicine, as well as a minor in Animal Sciences.

FSHN Department Welcome Table

Heritage Room, ACES Library

Come receive a warm welcome from the Food Science and Human Nutrition faculty and students. Get a chance to talk to an adviser or faculty member about the program and pick up some information about the Department.

Natural Resources and Environmental Sciences Academic Programs

Heritage Room, ACES Library

NRES offers a bachelor's degree, traditional M.S. and Ph.D. programs, a joint M.S./J.D. program, and an online M.S. program. Visit us to learn more about our educational opportunities.

Agricultural and Consumer Economics Department

Heritage Room, ACES Library

The Agricultural and Consumer Economics Department strives to meet the needs of students interested in a business-related field. Students majoring in ACES can select concentrations in Agri-Accounting; Agri-Finance; Farm Management; Agribusiness Markets and Management; Financial Planning; Consumer Economics and Finance; Environmental Economics and Policy; Public Policy and Law; Individually Planned Curriculum; and Policy, International Trade and Development. Students have a variety of options allowing them to select a program best suited to their personal goals and career interests.

Department of Crop Sciences

Heritage Room, ACES Library

Crop Sciences is an exciting field that uses knowledge about agriculture, biology, plant pathology, entomology, biotechnology, genetics, horticulture, and other disciplines to improve plants and their products and enhance production. Crop Sciences will continue to play a vital role in feeding the peoples of the world and providing energy needed in the coming decades. We offer a broad range of study opportunities that prepare you for rewarding careers. Visit the Crop Sciences exhibits to find out more.

Department of Agricultural and Biological Engineering

Heritage Room, ACES Library

Agricultural and biological engineers solve engineering problems related to living organisms and systems. Careers are available in bioprocessing, renewable energy, water and air quality, food production systems and other areas. Employment is available in industry, government and academics.

Department of Human and Community Development

Heritage Room, ACES Library

The Department of Human and Community Development (HCD) at the University of Illinois at Urbana-Champaign focuses on the interactions among children, adolescents, and families that form the building blocks of rural and urban societies world-wide.

Agricultural Education: What will you make it?

Heritage Room, ACES Library

The agricultural education program prepares students for a variety of careers in teaching and training. The program offers two undergraduate academic concentrations (i.e. Ag Sciences Education and Ag Leadership Education) and four graduate degree options (i.e. Teacher Education, Program Development, Applied Research, and online). We invite you to come find out why our program is an innovative leader in experiential and outreach education.

Get Ready to Communicate with Agricultural Communications!

Heritage Room, ACES Library

The agricultural communications program prepares students for a variety of opportunities in communications with a focus on agricultural and environmental sciences. Students pursuing this major choose one of three concentrations: advertising, broadcast journalism, or news-editorial journalism. Graduates of the program work as professionals in agricultural writing, editing, publishing, public relations, advertising, radio and television broadcasting, photography and other related activities. The program is shared by the College of Media and the College of ACES.

Housing

4-H House Cooperative Sorority

Morgan Room, ACES Library

4-H House provides its 55 members with an enriching home environment, a scholastic foundation, and an active atmosphere at a very affordable cost. If you plan on attending the U of I, need a fun and economical place to live and have at least five years of 4-H membership, 4-H House could be the place for you! Please stop by our booth for more information or to schedule a tour. You

10

can also contact Katherine Chenoweth at kchenow2@illinois.edu. We look forward to seeing you!

Location: 805 W. Ohio St., Urbana

Phone: 217-344-4784

Illidell of Alpha Gamma Sigma

Morgan Room, ACES Library

Illidell of Alpha Gamma Sigma is an agricultural fraternity whose roots reach back to 1949. Founded on the ideals of friendship and equality, Illidell offers students more than just an affordable place to live. The friendships and strong bonds of brotherhood formed at Illidell help to raise each member's college experience to its full potential. Our belief in "Strength from Within" helps us prepare ourselves for a successful and rewarding career in agriculture.

Location: 303 East Chalmers, Champaign

Phone: 217-344-3410

FarmHouse Fraternity

Morgan Room, ACES Library

FarmHouse Fraternity is an agricultural based fraternity that has been on campus since 1914. We strive to provide an environment of brotherhood, academic success, and social opportunities. Stop by our booth to learn more about joining!

Location: 809 W. Pennsylvania Ave., Urbana

Phone: 217-344-4069

Alpha Gamma Rho (AGR) Fraternity

Morgan Room, ACES Library

Alpha Gamma Rho is unique in its dedication to agriculture, with a vision towards the future. Founded in 1906, Alpha Gamma Rho has been an upstanding professional fraternity, on the University of Illinois campus for over 100 years. Alpha Gamma Rho has been making better men by instilling them with the necessary social, mental, and moral skills for young men to be successful in life after college.

Location: 58 E. Gregory Drive, Champaign

Phone: 217-337-4240

Nabor House Fraternity

Morgan Room, ACES Library

Nabor House is an agriculture cooperative fraternity that was established around the purpose of education, cooperation and recreation. Through a brotherhood of members with agriculture background or interests we develop men to strive for excellence in the classroom, within the house structure, in the community and in the Christian faith. If you're looking for affordable housing and a great brotherhood come check out Nabor House Fraternity.

Location: 1002 S. Lincoln Ave., Urbana

Phone: 217-344-3532

Private Certified Housing

Morgan Room, ACES Library

Private Certified Housing (PCH) facilities are privately owned and operated buildings, certified by the University to house all students including Freshman and Transfers. Historically twenty-five percent of the freshman class choose to live in PCH during their first year on campus. PCH units are comparable to other new student housing; they offer both educational and social programming, trained residential life staff, and meal plan options. In addition, Private Certified facilities offer amenities like semi-private bathrooms, more square footage, air conditioning, fitness rooms and housekeeping. In 2009 two PCH facilities achieved LEEDS sustainability certification for their new GREEN construction. Stop by the PCH booth at the ACES information fair to receive more detail about Private Certified Housing!



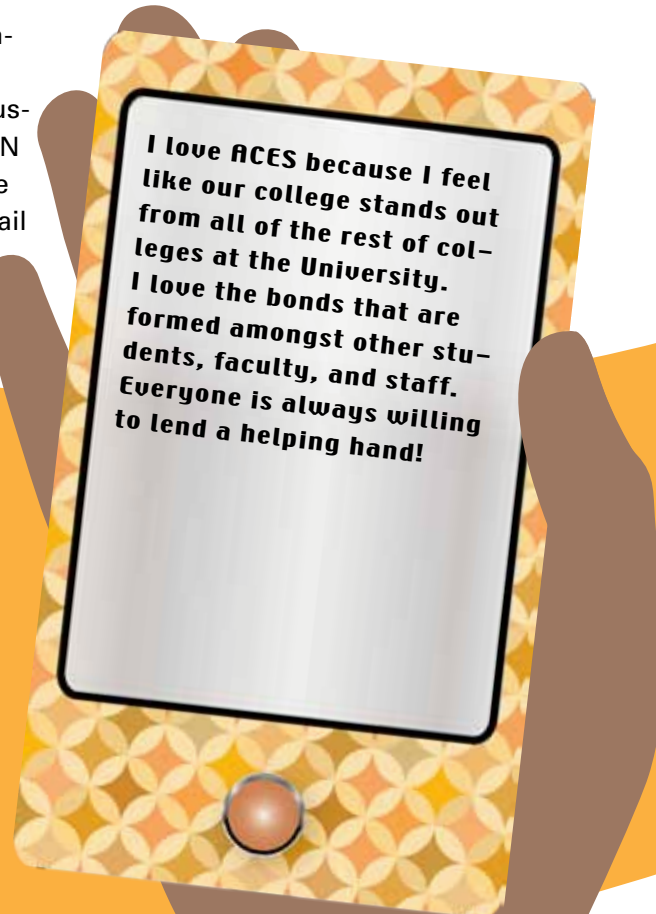
*Jennifer Miller, Chicago, IL
Junior, Food Science and
Human Nutrition*

ACES Library

Apply, Thrive, and Succeed

Heritage Room, ACES Library

Planning to apply or been admitted to the College of ACES and want more information? Seeking information about scholarships or leadership opportunities? Wondering what internships and careers ACES graduates pursue? Staff from ACES Student Development and Career Services can answer those questions. Stop by to chat about the resources



available to help you apply, thrive and succeed in the College of ACES and life after graduation.

Sigma Alpha Professional Agricultural Sorority

Basement, ACES Library

Sigma Alpha is a professional agricultural sorority that promotes scholarship, leadership, service and fellowship amongst its members and is currently celebrating its 10th anniversary on the University of Illinois campus. Sigma Alpha is an amazing organization for women who have an interest in agriculture to create lasting friendship and networking opportunities. Please stop by our booth for more information or contact Kayla Ammann at kammann2@illinois.edu. We look forward to meeting you!

ACE Club

Basement, ACES Library

Come to the basement of the ACES library in room 22 to see how ACE Club allows you to network yourself with some of the biggest businesses in the Agricultural and Consumer Economics Industry, as well as provide you with leadership opportunities on campus. Meet with current ACE students and use the ACE Club interactive display to learn more about the club and department.

Minorities in Agriculture, Natural Resources and Related Sciences (MANRRS)

Sims Room, ACES Library

Discover the diversity the College of ACES has! MANRRS is a national society that welcomes membership of people of all racial and ethnic groups for participation in agricultural and related sciences careers. It promotes academic and professional advancement by empowering minorities in agriculture, natural resources, and related sciences.

ACES Study Abroad

Sims Room, ACES Library

Add value to your education and credits towards your degree by participating in ACES Study Abroad. Enhance your employability and communication skills, while gaining a new understanding for world issues. You will gain access to new information and technologies, while making friends.

Collegiate 4-H

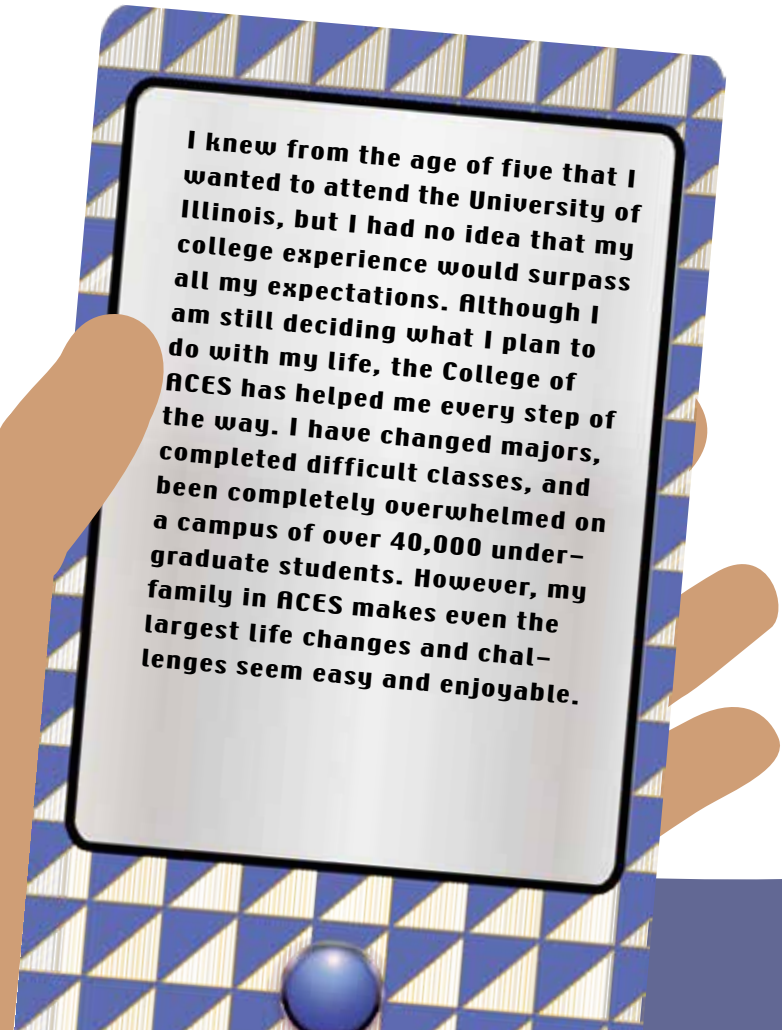
Basement, ACES Library

An exciting adventure awaits you in Collegiate 4-H, a service oriented organization dedicated to youth development and community enrichment. Play a bean-bag toss game to test your knowledge of the organization and speak with members about their experiences.

Transfer Students: Complete Your Bachelor's Degree in ACES!

Sims Room, ACES Library

Transfer students: Complete your bachelor's degree in ACES! Ready to make your next move? In ACES we work to make transferring easy! Worried about course transfers, class planning, financial aid or campus life? Don't worry, ACES works to create a seamless



I knew from the age of five that I wanted to attend the University of Illinois, but I had no idea that my college experience would surpass all my expectations. Although I am still deciding what I plan to do with my life, the College of ACES has helped me every step of the way. I have changed majors, completed difficult classes, and been completely overwhelmed on a campus of over 40,000 undergraduate students. However, my family in ACES makes even the largest life changes and challenges seem easy and enjoyable.



*Kaitlin Weitekamp, Raymond, IL
Sophomore, Crop Sciences*

process, preparing transfer students for success at the University of Illinois. Get ready to take classes with world-class faculty, participate in more than 30 student organizations, impact the community or travel the world! As an ACES student you can!

Illinois Leadership Center

Sims Room, ACES Library

Interested in learning how to develop your leadership skills as an Illinois student? Visit the Illinois Leadership Center booth to find ways to develop your essential leadership skills through campus-wide programs, internships and more! For more information about the Illinois Leadership Center, please visit www.illinoisleadership.illinois.edu!

Careers in Crop Sciences

Heritage Room, ACES Library

Crops Sciences is an exciting field that uses knowledge about agriculture, biology, plant pathology, entomology, biotechnology, genetics, horticulture, and other disciplines to improve plants and their products and enhance production. Crop Sciences will

continue to play a vital role in feeding the peoples of the world and providing energy needed in the coming decades. We offer a broad range of study opportunities that prepare you for rewarding careers. Visit the Crop Sciences exhibits to find out more.

Office of Undergraduate Admissions

Monsanto Room, ACES Library

Questions about the application and acceptance process? The Office of Undergraduate Admissions has the answers plus a wealth of resources for parents and students. Learn more by attending presentations for prospective students on Friday at 2 pm and Saturday at 12 pm and for admitted students on Friday at 3 pm and Saturday at 1 pm, or visit www.admissions.illinois.edu.

International Business Immersion Program (IBIP)

Sims Room, ACES Library

The International Business Immersion Program (IBIP), ACE 436, provides students in their sophomore or junior year with an in-depth, experiential immersion into the complex issues and constraints that confront international marketing channel participants in the food and agriculture sector. The course combines on-campus lectures with an intensive international immersion experience to Europe, Asia, or Latin America. By following the complete marketing channel from raw materials procurement to final consumption, participants gain first-hand knowledge of the necessary managerial decision-making skills required to successfully operate in today's global business environment.

Agricultural and Biological Engineering (ABE) and Technical Systems Management

Please note that ABE exhibits will be open on Friday from 8 am to 4 pm and on Saturday from 9 am to 3 pm, in conjunction with the Engineering Open House.

Department of Agricultural and Biological Engineering

Heritage Room, ACES Library

Agricultural and biological engineers solve engineering problems related to living organisms and systems. Careers are available in bioprocessing, renewable energy, water and air quality, food production systems and other areas. Employment is available in industry, government and academics.

American Society of Agricultural and Biological Engineers Student Branch (ASABE)

First floor, AESB

The American Society of Agricultural and Biological Engineers (ASABE) at the University of Illinois is the student branch of the national ASABE organization. ASABE is an educational and scientific organization that seeks to advance engineering associated with agricultural, food and biological systems. The student branch at the U of I is organized by

student-elected leaders and advised by departmental staff members. Members of the student branch can participate in numerous national contests in events across the country through the ASABE organization.

Alternative Diesel Fuels for Off-Road Equipment

Tractor lab, AESB

The engines and fuels lab has been instrumental in the analysis of alternative fuels in diesel engines. Fuels such as E-diesel and biodiesel have been produced, analyzed, and run through engines, testing the effects on the engines and the environment. The tour will provide visitors a chance to view research being conducted into the use of alternative fuels for diesel engines.

Career Opportunities in Agricultural and Biological Engineering

First floor, AESB

Agricultural and biological engineers solve engineering problems related to living organisms and systems. Careers are available in bioprocessing, renewable energy, water and air quality, food production systems and other areas. Employment is available in industry, government and academics.

Observe Cosmic Particles From Outer Space!!

First floor, AESB

In the cloud chamber alcohol is vaporized and drawn to a dry-ice cooled metal plate. The alcohol is super-saturated and when alpha particles pass through the vapor, they ionize the alcohol molecules and form condensation trails. In buildings, the arrangement can also make Radon particles visible.

Illini Pullers

First floor, AESB

From mechanical design to construction, members of the Illini Pullers Club work as a team to build a ¼ scale pulling tractor for a national competition held in Peoria, IL each year. Students gain real world experience, learn problem-solving skills and apply classroom knowledge in mechanical engineering and business management.

Corn Stalk Counter

First floor, AESB

Seed companies require a consistent count of germinated corn plants in experimental fields. This machine uses four laser beams that are interrupted by corn stalks, but also

by corn leaves and weeds. A smart filtering mechanism distinguishes the corn stalks from other objects and counts the plants accurately. Corn stalk diameter and spacing are also measured.

Air Cannons for use in Agriculture and Forestry

First floor, AESB

Air cannons are used for various purposes in agriculture such as a "puncher-planter," and for general safety testing. The air cannon contains a unique piston mechanism that enables reproducible acceleration of a test object. The working of the air cannon will be explained along with a demonstration.

Soil and Water Resources Laboratory

First floor, AESB

The Soil and Water Resources Laboratory focuses on understanding the role of natural ecosystems in agriculture. The lab designs systems to control soil erosion and flooding, develops irrigation systems, consults on crop nutrition management, and designs ways to handle storm water and control sediment.

Enzymes in Food Processing and BioSensing

First floor, AESB

Enzymes are proteins that are efficient catalysts for biochemical reactions. They speed up reactions by lowering the activation energy of a reaction pathway. They are widely used commercially in the detergent, food and brewing industries. Recently enzymes have been used in producing biosensors to measure sugar and alcohol content of foods.

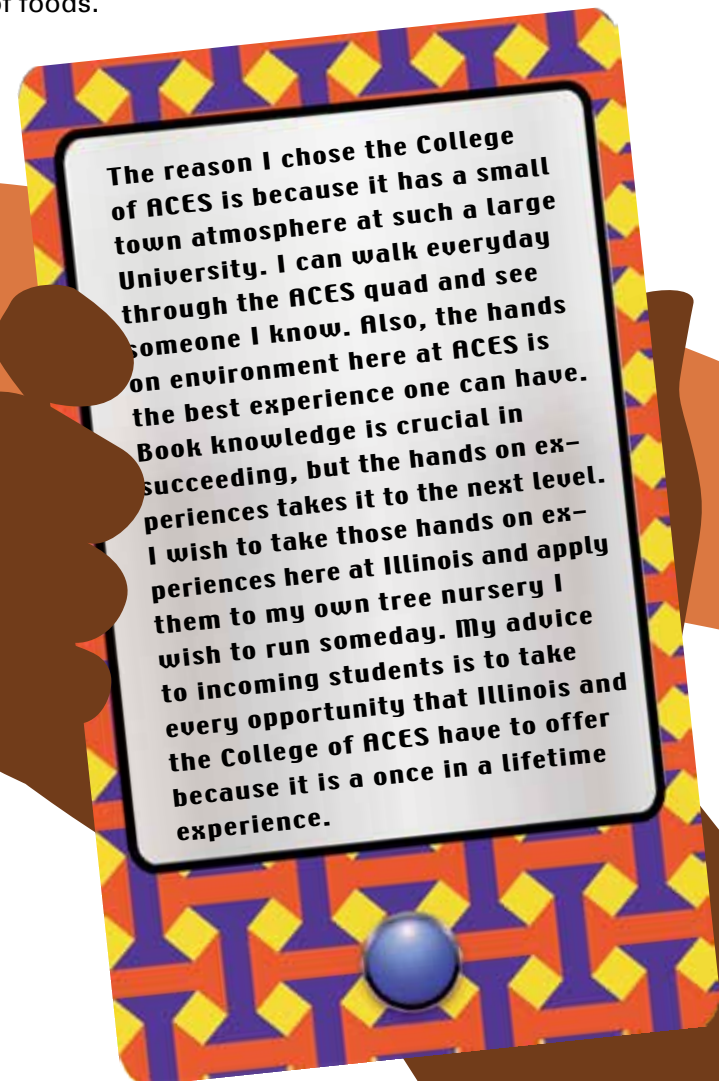
Illinois Student Branch of ASABE

First floor, AESB

Visitors will be given the opportunity to talk with members about club experiences, opportunities through the club and ASABE, and about being a member of the Agricultural and Biological Engineering department. Booth will also feature photos of club events as well as general and contact information.



*Joe Juricic, Seneca, IL
Junior, Horticulture
Production and
Management*



The College of ACES has given me the opportunity to grow as an individual. The college has told me to reach for the top while giving me the resources to do so. Because of the values that ACES has instilled in me, I have become a confident, innovative, and productive leader inside and outside the classroom.



*George Witchek, Bensenville, IL
Junior, Agribusiness Markets and
Management*

Biomass Gasification System

First floor, AESB

Want to find out how to run your car on wood chips? Then be sure to stop by and check out this biomass gasifier!

Alpha Epsilon

Digital Computer Lab

Alpha Epsilon is an honor society for outstanding biological and agricultural engineers. The objectives are to promote the high ideals of the engineering profession, to give recognition to those biological and agricultural engineers who manifest worthy qualities of character, scholarship and professional attainment, and to encourage and support such improvements in the biological and agricultural engineering profession that make it an instrument of greater service to mankind.

Interactive Carbon Cycle

Digital Computer Lab

In the BioMASS lab, we use models to help analyze how a complex system works. In this interactive game, become part of a carbon cycle model. We'll show how a complex system model works, and why little changes in the way we use fossil fuels can make a big difference to global warming.

Robot Communications

Digital Computer Lab

This exhibit will demonstrate how multiple robots communicate with each other in a greenhouse.

Animal Welfare and Environmental Systems Laboratory

First Floor, AESB

Animal Welfare and Environmental Systems Laboratory—What do we do? Look at the systems where animals are housed, asking questions like, “What does the chicken want?” Learn about the measurement of environmental conditions and testing animal preferences within animal housing facilities.



Integrating knowledge,
March 12-13 *deriving genius.*

EOH 2010

Engineering Open House 2010!

The College of Engineering at the University of Illinois proudly invites you to come to Engineering Open House 2010. This year the event is on March 12th and 13th and features over 200 exhibits that range from hands on exhibits to crushing concrete. We have plenty of family friendly exhibits for people of all ages. Also be sure to check out the Jerry Sanders Robot competition and the High School design competition and see high school students put their engineering skills to the test. Engineering Open House is located on the engineering campus north of Green Street. The shuttle stop is right by our welcome center.



The College of ACES has provided me with opportunities I never dreamed of. Be open minded and willing to try new things, and the College of ACES will take you far.



*Zachary Schmidt, Carrollton, IL
Senior, Ag Business*

Agricultural and Consumer Economics (ACE)

Agricultural and Consumer Economics Department

Heritage Room, ACES Library

The Agricultural and Consumer Economics Department strives to meet the needs of students interested in a business-related field. Students majoring in ACE can select concentrations in Agri-Accounting; Agri-Finance; Farm Management; Agribusiness Markets and Management; Financial Planning; Consumer Economics and Finance; Environmental Economics and Policy; Public Policy and Law; Individually Planned Curriculum; and Policy, International Trade and Development. Students have a variety of options allowing them to select a program best suited to their personal goals and career interests.

ACE Department Interactive Exhibit

ACES Library, Basement, Room 22

Come see the new, interactive display in the basement of the ACES library to see the new, exciting developments within the ACE department. Fulfill your college dreams with all that ACE has to offer.

ACE Club

ACES Library, Basement, Room 22

Come to the basement of the ACES library to see how ACE Club allows you to network yourself with some of the biggest businesses in the Agricultural and Consumer Economics industry, as well as provide you with leadership opportunities on campus. Meet with current ACE students and use the ACE Club interactive display to learn more about the club and department.

Financial Planning for Your Future

ACES Library, Basement, Room 22

Listen as Professor Braden discusses the importance of financial planning and how what you know affects your future in a typical classroom atmosphere on Friday at 10 am.



The College of ACES has been my family for the last four years. It has raised me to be a perfect match for a career after graduation, and has given me some lifelong friends.



*Matthew Briscoe, Flora, IL
Senior, Agricultural and Consumer &
Economics – Market and Management*

Animal Sciences

Department of Animal Sciences Exhibit

ACES Library, Heritage Room

The Department of Animal Sciences has the following concentrations within the major of Animal Sciences: Animal Business, Management and Industry, Companion, Recreational, Laboratory, Food Animal Science, Biotechnology, Pre-Vet Medicine, as well as a minor in Animal Sciences.

Production Animal Club

Stock Pavilion

The Production Animal Club was created to help students gain more experience with production animals such as sheep, poultry, cattle, and swine. The club is designed for students with little livestock experience but everyone is welcome to join to enhance their experience. This club is not just for pre-vet students.

Veterinarians without Borders

Stock Pavilion

Veterinarians without Borders connects and organizes students to volunteer with wildlife and conservation programs in developing countries, assists with funding these trips

where possible and encourages cultural immersion and awareness of the local socio-economic and environmental issues.

Teachers for Creatures

Stock Pavilion

Teachers for Creatures promote humane education. We have four committees currently (exotics, animal assisted therapy, stop breed discrimination, and puppy mill education) and we are adding a fifth one this semester (feline education). We try to create hands on and interactive activities that promotes learning for all ages.

Hoof N' Horn

Stock Pavilion

Hoof N' Horn is an organization for students interested in animal sciences, particularly the livestock industry. Our goal is to recruit students within the college to our club. Our meetings are held monthly, and are usually held in the Animal Sciences Laboratory. At our meetings, we hear from industry leaders, plan our Spring Showdown, have food and a lot of fun. We also have social events for students to network.

Student Equine Emergency and Rehabilitation Society

Stock Pavilion

The Student Equine Emergency and Rehabilitation Society is a student outreach group and a registered student organization at the University of Illinois. S.E.E.R.S focuses on educating the public on current issues in equine welfare and networks close with S.H.A.R.E, a local horse rescue, to provide volunteers, funds and assistance. S.E.E.R.S also offers University of Illinois students the opportunity to gain hands on experience working with horses and a valuable chance to volunteer in the community. Our exhibit today features one of the horses housed at the rescue. Come by and visit today!

Illini Equestrians

Stock Pavilion

The Illini Equestrians are a horseback riding club. We ride both English and Western. In the club you will have the opportunity to show as well as attend many social activities. You do not need your own horse to be a part of the Illini Equestrians as horses are provided during lessons and at shows. Stop by our booth to see one of the University of Illinois horses.

Roaming the Rumen

Stock Pavilion on Saturday at 11 am and 1 pm

“Roaming through the Rumen” features the important role a complex stomach (rumen) plays for dairy, beef, and sheep. Come out and evaluate rumen structure with “Fred” the steer rumen, learn about rumen volatile fatty acid production, and understand rumen disorders that veterinarians will need to treat. A fistulated dairy cow will be present to explore the actual inside of a dairy cow’s rumen for a “hands-in” experience.

Dr. Hurley’s Magical Milk Lab

131 ASL at 12 pm on Friday

A hands-on overview of milk composition. Making butter, separating curds-n-whey, and learning about milk, cheese, colostrum and cows.

Presented by Dr. Walter Hurley

Horse Behavior and Training

Monsanto Room, ACES Library at 1 pm on Friday

The lecture “Horse Behavior and Training” will present the unique ways that horses see their world, how they perceive human handlers, and the best ways to gain a horse’s trust. It will also show how horses commu-

nicate using their body language, and how to recognize these signals. These basic concepts will then be applied to specific techniques for handling legs in resistant horses, and trailer loading.

Meat Science Club

Stock Pavilion

Meat Science Club is designed to create an interest in the meat industry. Our exhibit will have a spin-the-wheel, to help learn about different retail cuts of meat. Also, there will be a poster discussing some of the different careers available in the meat industry. Come by our table to talk to graduate and undergraduates studying Meat Science.

Rodeo Club

Stock Pavilion

The Rodeo Club is here to promote the sport of Rodeo and to give knowledge to those who wish to learn more about it. To be in Rodeo Club, you do not have to know anything about horses or rodeo. At our exhibit we will be teaching roping as well as bring the Mighty Bucky.

An Overview of Animal Handling

Monsanto Room, ACES Library on Friday at 11 am

“Overview of Animal Handling” presents the basics to any great animal-handler relationship. This class gives a taste of an Animal Sciences class taught every semester teaching the basics to working with farm animals. The main focuses will be on beef cattle, dairy cattle, sheep, swine, and chicken. Come learn a few key insights into livestock handling!

Presented by Mr. Cobb

Illini Poultry Club

Stock Pavilion

Come see baby chicks enter the world at the Illini Poultry Club’s booth. In addition to chicks hatching, we will also have adult chickens for you to pet, as well as tons of info on poultry related careers and opportunities. Also, come test your knowledge about poultry with our trivia game.

Companion Animals Club

Stock Pavilion

The Companion Animals Club is designed for students who enjoy learning about all different kinds of companion animals, as well as the issues facing companion animals and the uses of them in society. Each semester we have a guest speaker at our monthly

meetings, we go on a semester day trip, and hold a dog wash fundraiser. Most importantly, we are a group that just loves to have fun while learning about companion animals!

Pre-Vet Club

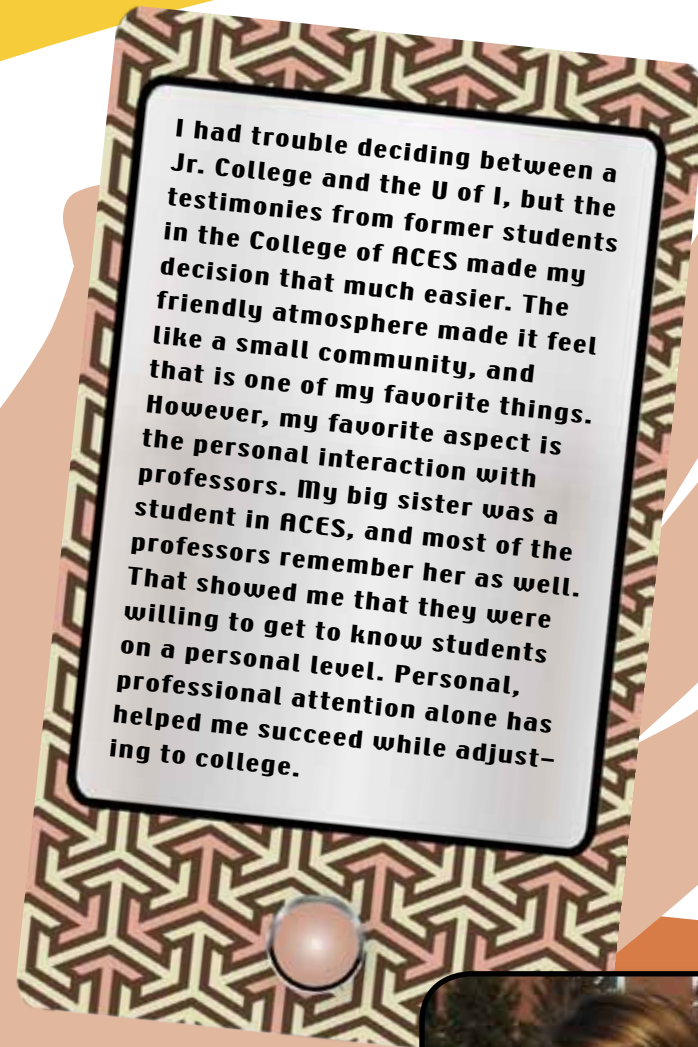
Stock Pavilion

The University of Illinois Pre-Vet Club is designed to give students information on different fields of Veterinary Medicine and other animal-related careers. We invite speakers to come to our meetings and talk about their careers and the opportunities it has offered them. We also attend an annual symposium for pre-vetters, have various fundraisers, and provide advice on the admissions process into Vet School.

Illini Dairy Club

Stock Pavilion

The Illini Dairy Club is dedicated to expanding the opportunities of students in the dairy industry and teaching people about the dairy industry. At our booth, you will have the opportunity to learn about dairy at the University of Illinois and to milk a cow.



*Janell Baum, Clinton, IL
Sophomore, Agricultural
Communications*

Crop Sciences and Horticulture

Careers in Crop Sciences

ACES Library, Heritage Room

Crop Sciences is an exciting field that uses knowledge about agriculture, biology, plant pathology, entomology, biotechnology, genetics, horticulture, and other disciplines to improve plants and their products and enhance production. Crop Sciences will continue to play a vital role in feeding the people of the world and providing the energy needed in the coming decades. We offer a broad range of study opportunities that prepare you for rewarding careers. Visit the Crop Sciences exhibits to find out more.

Growing Opportunities in Crop Sciences

Turner Hall, west Hallway

Where will a major in Crop Sciences and Horticulture take you? Visit this exhibit to discover the growing number of opportunities in Crop Sciences and Horticulture, see the specializations within the major, and meet alumni and current students from the department.

Get Synced with Chocolate!

1125 PSL on Friday and Saturday at 12 pm

Dr. Skirvin is in sync with chocolate from all parts of the world. Learn about cacao and everything chocolate. Join us for a taste-testing adventure with Dr. Skirvin!

Turf Club

PSL, Hallway

Ever think about having a career in Turfgrass Management? Come ask students questions about possible opportunities in Turfgrass Management. Students will also explain how to effectively manage your home lawn!

Field and Furrow Club

AE-103 Turner Hall

Think you know your crops? Come and take the Field and Furrow Club's quiz. Be sure to ask about the club's many fun activities.

Plant Molecular Genetics Lab Tour

Turner Hall, north Hallway on Friday at 10 am, 11 am, 12 pm, 1 pm, 2 pm; Saturday at 10 am, 11 am, 12 pm, 1 pm

Tour a molecular genetics lab with an ACES student. See tissue culture growth chambers for plant cultures and learn how students

and faculty in Crop Sciences use molecular genetics to study soybeans and other plants. Meet in the north entryway of Turner Hall.

Plant Breeding Improvements—From Wild Species to Crops

W-121 Turner Hall

Our crop plants were derived from wild uncultivated plants many thousands of years ago. Come to this exhibit to explore some plant improvements, and see some of the wild ancestors of our crops. Test your knowledge of where different crops came from.

Insect ID Fun

W-121 Turner Hall

There are many insects sharing our world with us. How good are you at identifying common insects? Come to this exhibit to see how many insects you can identify.

CSI: Crop Sciences Inquiry

W-109 Turner Hall on Friday at 9:30, 10:30, 11:30, 12:30, 1:30, 2:30; Saturday at 10:30, 11:30, 12:30, 1:30

Investigate crop sciences and test your knowledge of plants, agronomy, horticulture, and agriculture. Explore the facts and fallacies using "I-clickers," which poll the audience. Expect to last about 20 minutes.

Green House Tour

Turner Hall, south doorway on Friday at 9:30, 10:30, 11:30, 12:30, 1:30; Saturday at 10:30, 11:30, 12:30

A greenhouse tour will begin at the south doorway of Turner Hall and end in the Plant Sciences Lab.

A Day in the Life of a Crop Sciences Student

W-209 Turner Hall on Friday at 11 am and 1:30 pm; Saturday at 11:30

Get connected with information about Crop Sciences and Horticulture and get answers about Crop Sciences and Horticulture questions from advisors and current students!

Connect with Trees

1305 PSL

Is that a maple? Is that an oak? Come and learn the great trees to use in your landscape. Dr. Gary Kling's HORT 302 class will get you synced with trees and shrubs.

Self-guided Conservatory tours

PSL Conservatory

Come enjoy the beauty of a tropical jungle in the PSL Conservatory! See orchids and tropical plants! We hope that you enjoy these beautiful and exotic plants.

The Outdoor Landscape

1303 PSL

Ahhh...the great outdoors! The horticulture students will help you to enjoy it more! Learn some landscaping skills including surveying and creating an outdoor hardscape!

Green Roofs

PSL Hallway

Interested in learning about green roofs? Come learn about the plants that survive and thrive on a rooftop.

Do You Know Your Plants?

PSL Hallway

Get synced with plants! Quiz yourself and learn some new plants and their names. Sponsored by Horticulture Honors Society.

Looking for a unique academic pathway that will help you accomplish your professional dreams? Join the College of ACES, and like me, you can pursue medical school as a Human Nutrition major with a curriculum designed to gear you towards professional school; besides, wouldn't you rather sit in class learning about what you eat?

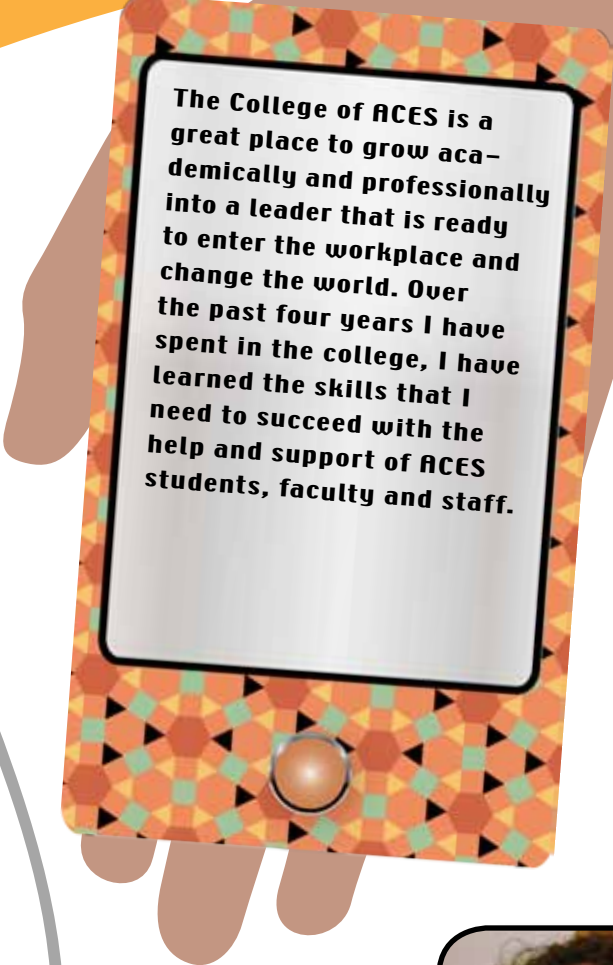
Floral Design to Music

1125 PSL on Friday at 11 am and 1 pm; Saturday at 11 am and 1 pm

Get synced with one of ExplorACES' most popular exhibits! Watch as students interpret music to create eye-catching floral design.



Jeremy Park, Streamwood, IL
Sophomore, Human Nutrition
(Pre-Medicine)



The College of ACES is a great place to grow academically and professionally into a leader that is ready to enter the workplace and change the world. Over the past four years I have spent in the college, I have learned the skills that I need to succeed with the help and support of ACES students, faculty and staff.

The World of Nematodes

W-121 Turner Hall

What are nematodes? Why are they important in agriculture? Where do they live? Explore answers to these questions and see nematodes in action at this exhibit.

I-Flower

PSL Hallway

Floral Design club invites you to win flowers by answering floral design and florist-related questions.

Horticulture Club: In Sync with Plants

PSL west Hallway

Come join the Horticulture Club to propagate your very own plant to take home! You can check out photos of activities and speak with club members on the benefits of joining the Horticulture Club. Find out about our fun and exciting workshops, events, and the Mom's Day Flower Show!

Disease Resistant Plants

AE-103 Turner Hall

Visit this exhibit to learn about some common pests of crop plants and horticulture plants and see the difference between pest resistance and susceptible plants. See how well you can score resistant and susceptible plants.



*Maxine Roman, Chicago, IL
Senior, Food Science, Minor in
Chemistry and Spanish*

Food Science and Human Nutrition

FSHN Department Welcome Table

ACES Library, Heritage Room

Come receive a warm welcome from Food Science and Human Nutrition faculty and students. Talk to an advisor or faculty member about the program and pick up some information about the department.

Concentrate on FSHN

348 Bevier Hall on Friday and Saturday from 11 am – 1 pm

Talk with current students and learn what a day in their life is like in the different FSHN Department concentrations: dietetics, food industry and business, food sciences, hospitality management, and human nutrition.

FSHN Career Exploration Panel

242 Bevier Hall on Friday at 12 pm

What are the career opportunities with a degree in Food Science and Human Nutrition? Come learn more about careers related to food science, human nutrition, hospitality management, dietetics, and food industry and business from a diverse panel of alumni and industry professionals currently working in the field. Don't forget to bring your questions!

Guided Tours of the Food Science Pilot Plant

165 AESB Pilot Plant on Friday and Saturday at 10 am and 1 pm

Investigate food processing methods like pasteurization, drying, extrusion and commercial canning as you tour a working food science pilot plant and learn about the latest developments in food processing. Expect tour to last 35 minutes.

Hospitality Management Association

Bevier Commons

Explore the possibilities of the hospitality industry and the Hospitality Management program at Illinois.

Student Dietetics Association

Bevier Commons

The Student Dietetic Association is an organization for dietetic students who want to get involved and learn more about career opportunities.

Association of Food Technologists

Bevier Commons

The Association of Food Technologists is a club for students in Food Science. Come see a new and innovative way to look at food as well as take a dip in our chocolate fountain. Also, take a turn running across a pool filled

with cornstarch slurry and learn about engineering principles related to food!

Rainbow of Functional Foods – Nutritional Sciences Graduate Student Association (NSGSA)

Bevier Commons

A Rainbow a Day Really Can Keep the Doctor Away! The NSGA will show you the connection between diet and health...in a very colorful way! Come to their booth to learn exactly why you should eat your fruits and veggies. Learn about the rainbow of functional foods, and then show off your new knowledge by playing their fun color game. You might even win a delicious and healthful prize!

Food Chemistry: Protein Structure

132 Bevier Hall on Friday at 10:15-10:45 am

Why do egg whites change from transparent to opaque when heated? Why does cream become a fluffy and delicious treat when whipped? Come learn about the chemistry behind these changes in food.

Presented by Dr. Dawn Bohn

Eating Healthy in the Dorms

328 Bevier Hall on Friday at 1:30-2 pm

Worried about the Freshman 15? Have special dietary needs? Come learn from the Nutrition Peers student group about 'Eating Healthy in the Dorms.'

As a senior, I look back with amazement at the person I have become over the past four years, thanks to my experiences here. At ACES you will find incredible internship opportunities, outstanding professors, and connections that will surely last a lifetime.

Human and Community Development

The Department of Human and Community Development (HCD) at the University of Illinois at Urbana-Champaign focuses on the interactions among human activity systems that form the building blocks of rural and urban societies world-wide.

Agricultural Education: What will you make it?

Heritage Room, ACES Library

Agriculture Education has many opportunities for you to explore all aspects of the field. Some of these opportunities include

traveling, working with experienced faculty, and taking some of the most desired classes on campus. Come and talk to students who are currently in the program and sit in on a short lesson. We have all of the tools to offer you a great experience. What will you make of it?

Get Ready to Communicate with Agricultural Communications!

Heritage Room, ACES Library

The agricultural communications program prepares students for a variety of opportunities in communications with a focus on agricultural and environmental sciences. Students pursuing this major choose one of three concentrations: advertising, broadcast journalism, or news-editorial journalism. Graduates of the program work as professionals in agricultural writing, editing, publishing, public relations, advertising, radio and television broadcasting, photography and other related activities. The program is shared by the College of Media and the College of ACES.



*Carly Rakes, Auburn, IL
Senior, Agricultural
Communications*

Natural Resources and Environmental Sciences

Natural Resources and Environmental Sciences Academic Programs (NRES)

ACES Library, Heritage Room

NRES offers a bachelor's degree, traditional M.S. and Ph.D. programs, a joint M.S./J.D. program, and an online M.S. program. Visit us to learn more about our educational opportunities!

NRES around the world with Google Earth

Turner Hall, west entrance

Where in the world are the NRES students and faculty? Visit our booth to find out!

Little Prairie on the Campus

W-121 Turner Hall

Red Bison, a registered student organization, is playing an active role in the development of a restored prairie on campus. Visit them to learn more about their campus environmental efforts.

The Wildlife Society: Test Your Knowledge

Turner Hall, north entrance

How much do you know about identifying wildlife? Test your skills with the University of Illinois Chapter of The Wildlife Society.

Working with Birds of Prey

W-109 Turner Hall on Friday and Saturday at 11 am

Meet hawks, owls, and the people who rehabilitate them at the Wildlife Medical Clinic. Learn more about careers in wildlife conservation.

A Day in the Life of an NRES Student

N-527 Turner Hall on Friday from 10 am to 2 pm and Saturday at 11 am

Talk to NRES undergraduate students, and get the real scoop on the joys and challenges of majoring in NRES at Illinois.

The World as We See It: Photographs by NRES Students and Faculty

Turner Hall, east Hallway

See through the eyes of NRES students and faculty members, and enjoy the magnificent sights they've captured as part of the NRES family.

NRES Students Making a Difference

Turner Hall, south Hallway

Visit the south hallway of Turner Hall to discover the many ways NRES classes, organizations, faculty, and students, make a difference in local communities and around the world.

Environmental Entrepreneurship: Developing an Illinois Carbon Registry

W-115 Turner on Friday at 10 am and 1 pm; Saturday at 10 am

The analysis of the environmental impacts of human activities is a complicated but increasingly important, task. Students in NRES 294/499 Carbon Registry Internship are building those skills and developing a business model for implementing an Illinois Carbon Registry. Join us to learn more!

Create Your Own Edible Soil Profile

W-115 Turner on Friday at 10:30 am and 1:30 pm; Saturday at 10:30 am

Like playing in the dirt? Well, you will after learning more about soil in our interactive and edible activity. You will be able to build a soil profile by layering different colors of puddings, representing different soil horizons and top them off with M&M "rocks," grass-colored coconut shavings, and gummy worms.

In Your Neighborhood

W-121 Turner Hall

Check out this interactive exhibit to explore the natural resources in your own neighborhood.

Calculate Your Carbon Footprint

W-121 Turner Hall

As the conservation of natural resources becomes more important for financial and environmental reasons, it is useful to gain an understanding of your own impact. Get a glimpse by calculating your carbon footprint.

Illini Foresters: Adopt a Seedling

W-121 Turner Hall

Once you've calculated your carbon footprint, you can take steps to reduce it by visiting the Illini Foresters. Learn more about forestry at the University of Illinois and around the U.S. and adopt a free tree seedling to plant at home.

Sustainable Student Farm

South Hallway, Turner Hall

Learn more about volunteering and other opportunities at the Sustainable Student Farm!

Champaign Community Garden

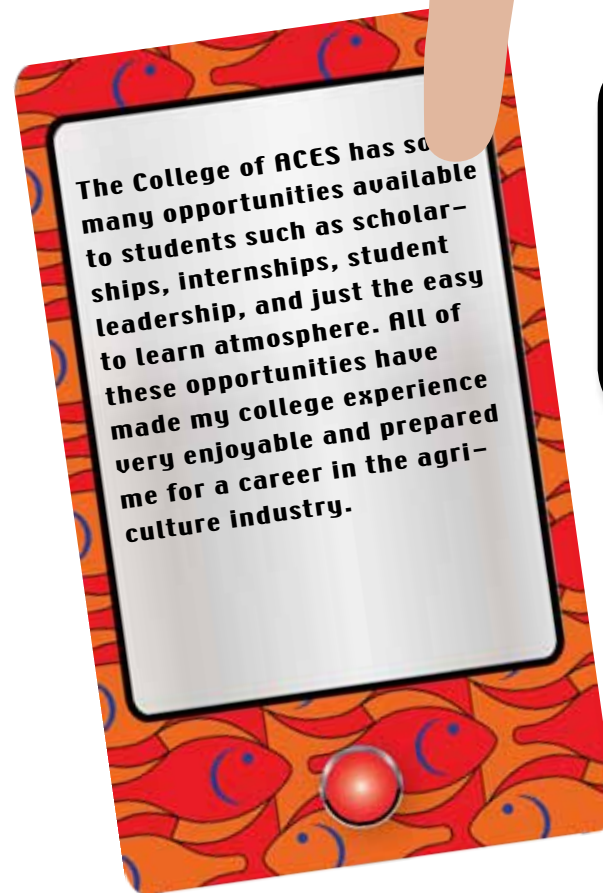
South Hallway, Turner Hall

A group of seven students is starting a community garden in north Champaign. The most impoverished part of Champaign is just to the north of campus and we are using our resources to try and make it better. Community gardens are a great way to bring a community together and educate them about healthy eating and how to grow their own food.

Student Sustainability Committee

South Hallway, Turner Hall

The Student Sustainability Committee is a group of 10 elected students and 10 faculty. The committee is in charge of allocating the student green fee, \$7 per student. We use the money collected to support sustainable projects on campus, such as lighting retrofits and the Sustainable Student Farm. Come see all of the projects we have supported and how you, too, can be involved!



*Matt Carton, Atkinson, IL
Senior, Agricultural and
Consumer Economics with
a minor in Crop Sciences*



NATURALLY ILLINOIS EXPO

Friday, March 12 and Saturday, March 13, 2010

Please plan to join us at the Naturally Illinois Expo 2010. Experience fifty exhibits, demonstrations, and hands-on activities of interest to the public, teachers, and students of all levels. Interact with scientists who work on cutting-edge research and solutions to water, energy, ecosystem, mineral resource, natural hazard, climate, and technology issues.

New exhibits for 2010 include

Turtles of Illinois

Backyard Diversity—Insects of Illinois and Beyond

Microcritters: Dead and Alive

Biofuels—From Waste to Biodiesel

Building a Sustainable System in Haiti with *Jatropha curcas*

Research Off the Grid

Get to the Core: Steamy Swamps and Ice Age Glaciers

Favorites returning include

Kids Fossil Dig

Fun with Water Chemistry

Mud to Parks

Build Illinois

The second annual Naturally Illinois Expo is an exciting opportunity to learn about science and the natural resources of Illinois through the work of the INRS State Scientific Surveys. INRS gives Illinois citizens, business, and decision-makers objective, timely, relevant science and solutions necessary to manage our resources, environment, and economy wisely. Our scientists work to support and balance economic development and natural resource sustainability for Illinois and beyond. Come see how we can work together to improve life in Illinois today and into the future.

The Expo is free and open to the public. It's a great school field trip destination. Groups, please contact Eric Plankell in advance at 217-265-8029 or expo@inrs.illinois.edu.

March 12-13, 2010

Friday, 9:00 a.m. to 3:00 p.m.

Saturday, 10:00 a.m. to 3:00 p.m.

Natural Resources Building (just west of the Stock Pavillion)
615 East Peabody Drive
Champaign, Illinois 61820

Check www.inrs.illinois.edu/expo for more information.



Saturday, 9:00 a.m.

Start your day with a run! For race information or to register, go to www.inrs.illinois.edu/expo/5krun.shtml or call 217-244-2179

What You Need to Know

Housing Units

Incoming students have a wide variety of University and privately owned housing options, each with unique features and benefits. While the College of ACES does not officially endorse any specific housing unit(s), several have enjoyed a long association with the College and its students.

Be sure to check out the housing exhibits in the Morgan Room of the ACES Library for more details and application information.

4-H House Cooperative Sorority

805 West Ohio St., Urbana

217-344-4784

Alpha Gamma Rho (AGR): fraternity

59 E. Gregory Drive, Champaign

217-337-4240

Illidell of Alpha Gamma Sigma: fraternity

303 E. Chalmers St., Champaign

217-344-3410

FarmHouse: fraternity

809 W. Pennsylvania Ave., Urbana

217-344-4069

Nabor House: independent fraternity

1002 S. Lincoln Ave., Urbana

217-344-3532

Office of Undergraduate Admissions

Monsanto Room, ACES Library

Questions about the application and acceptance process? The Office of Undergraduate Admissions has the answers, plus a wealth of resources for parents and students. Learn more by attending presentations for prospective students on Friday at 2 pm and Saturday at 12 pm and for admitted students on Friday at 3 pm and Saturday at 1 pm, or visit www.admissions.illinois.edu.

Apply, Thrive and Succeed

Heritage Room, ACES Library

Planning to apply or been admitted to the College of ACES and want more information? Seeking information about scholarship or leadership opportunities? Wondering what internships and careers ACES graduates pursue? Staff from ACES Student Development and Career Services can answer those questions. Stop by to chat about the resources available to help you apply, thrive and succeed in the College of ACES and life after graduation.

Transfer Students

Suite 115, ACES Library

The College of ACES would like to welcome you to a special session just for you. Please join us at 11:00 am on Friday, March 12 or Saturday, March 13, 2010 in the ACES Library Suite 115. You can also gain valuable information at futurestudents.aces.illinois.edu/transfer.

ExplorACES Steering Committee

Mitch Heisler and Chris Francis, Directors

Landon Frye and Maxine Roman,
Co-Directors of Exhibits

Matt Carton and Joe Juricic, Co-Directors
of Logistics

George Witchek and Jeremy Park,
Co-Directors of Food Service

Carly Rakes and Cassie Becker, Co-Directors
of Publicity and Web Site

Zach Schmitt, Kaitlin Weitekamp, and
Jennipher Miller, Co-Directors of Recruitment

Janell Baum, Director of Internal
Communications

Matthew Briscoe, Director of Intra-College
Relations

Assistant Dean Jason Emmert, Jeremy
Robinett, and Lee Busselman, Advisors

Departmental Coordinators

Agricultural and Biological Engineering

Faculty/Staff: Scott Bretthauer

Student: Ryan Giertz

Agricultural and Consumer Economics

Faculty/Staff: Professor Fettig

Students: Ethan Koch and Travis Huisinga

Agricultural Education

Faculty/Staff: James Anderson

Student: Britney Cowan

Animal Sciences

Faculty/Staff: Tom Carr

Students: Christina Mazulis and Amanda
DeSollar

Crop Sciences

Faculty/Staff: Fred Kolb, Sharon Conatser
and Dianne Noland

Students: Jessica Frohning, Ross Recker,
Jane Christensen and Jordan Fisher

Food Science and Human Nutrition

Faculty/Staff: Becky Roach

Students: Aaron Rasmussen, Joey Kreger,
Stephanie Hall and Stephanie Diamond

Human and Community Development

Faculty/Staff: Gerry Walter

Natural Resources and Environmental Sciences

Faculty/Staff: Jeff Brawn and Piper Hodson

Students: Christine Chung and Hannah Grant

ACES Corporate Partners 2009

Investors Level

Bunge North America, Inc
CGB Enterprises
Farm Credit Services
Illinois Farm Bureau
Monsanto
Stone Seed Group

Shareholders Level

Ball Horticultural Company
Helena Chemical
Wyffels Hybrids

Gift In Kind

American Egg Board
Brandt
Corn Marketing Board
Cory Craig Auction Service
DeKalb
Dr. Richard Herman
Dr. Robert Easter
Dr. Robert Hauser
Doug McCain's Gourmet Barbeque Sauce

Eckert's Orchard
Eli's Cheesecake
Farm Progress Companies
Friends of Land of Lincoln Cattle Breeders
Frito Lay
Gro Horticultural Enterprises, Inc.
Heather Cupps-Miller
Hi-Point Genetics
Illinois Beef Association
Illinois Dairy Association
Illinois Department of Agriculture
Illinois Egg Association
Illinois Pork Producers Association
Illinois Soybean Association
Illinois State Auctioneers Association
Illinois Swine Council
Illinois Wine Council
L.A. Gourmet Catering
National Soybean Research Laboratory
Orion Samuelson
Pioneer Hybrid International
Prairie Farms
Rex Evans Bedding and Feed Supply
Werner Angus Farms

The ExplorACES Steering Committee also extends a special thank you to...

Robert J. Hauser, College of ACES Interim
Dean
Laurie Kramer, Associate Dean
Charles Olson, Retired Assistant Dean
Jason Emmert, Assistant Dean
F. William Simmons, Assistant Dean
Kathryn Martensen, Assistant Dean
Jesse Thompson, Assistant Dean
Darren Gentzler
Daniel Korte, Web Site Design
Maralee Johnson, Illinois Beef Association
Colleen Callahan, Fighting Illini Pork Club
Jean-Louis Ledent, Chef, Bevier Café
Tina Veal
Jeremy Robinett
Paul Ellinger
Neal Merchen
German Bollero
Jeff Brawn
Walter Hurley
Fred Kolb
Dianne Noland
Sharon Conatser
Lee Busselman
Robert Hoeft
Gerry Walter

K.C. Ting

Bruce Branham

Robert Hughes

Jenny Neef

Krista Sunderland

Marisa Meador

Susie Conrad

Faye Dong

Julia Bello Bravo

Sarah Adams

Anne Stites

KT and Betty Wright

ExplorACES Alumni

ACES Information Technology Computing
Services

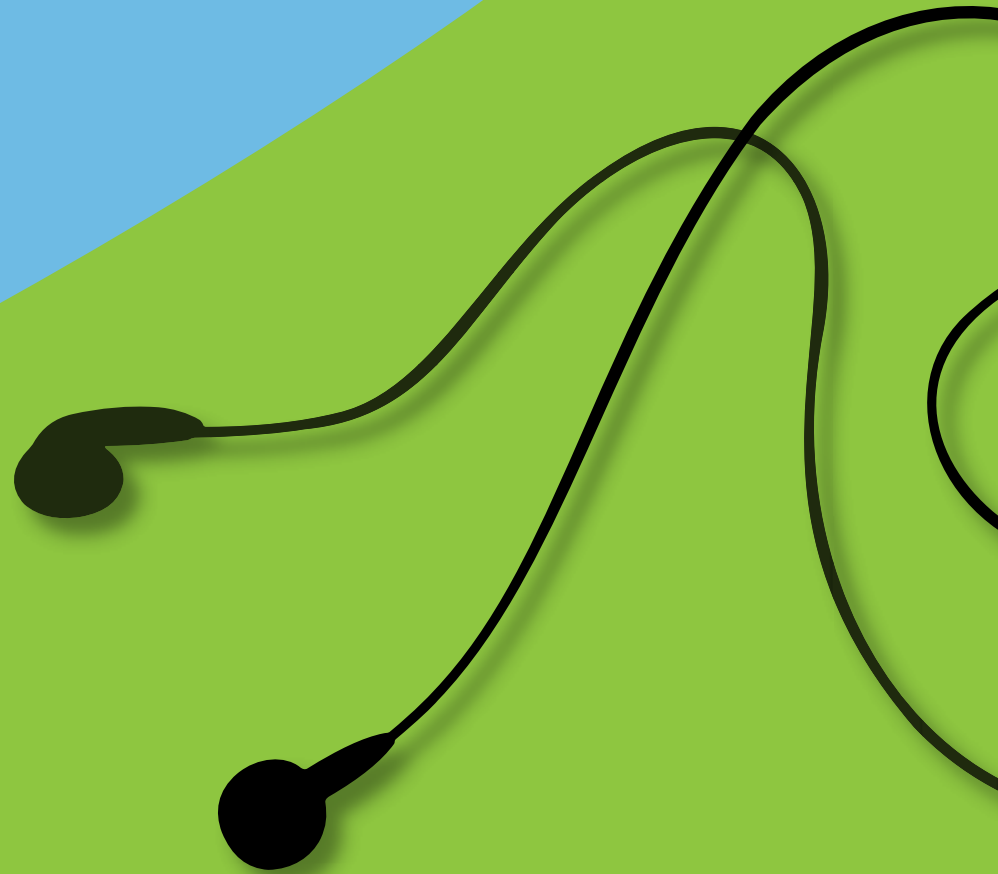
U of I Facilities and Services

Naturally Illinois Expo Steering Committee

Engineering Open House

U of I Office of Facilities Management and
Scheduling

RSO Organizations





aces.illinois.edu/ExplorACES