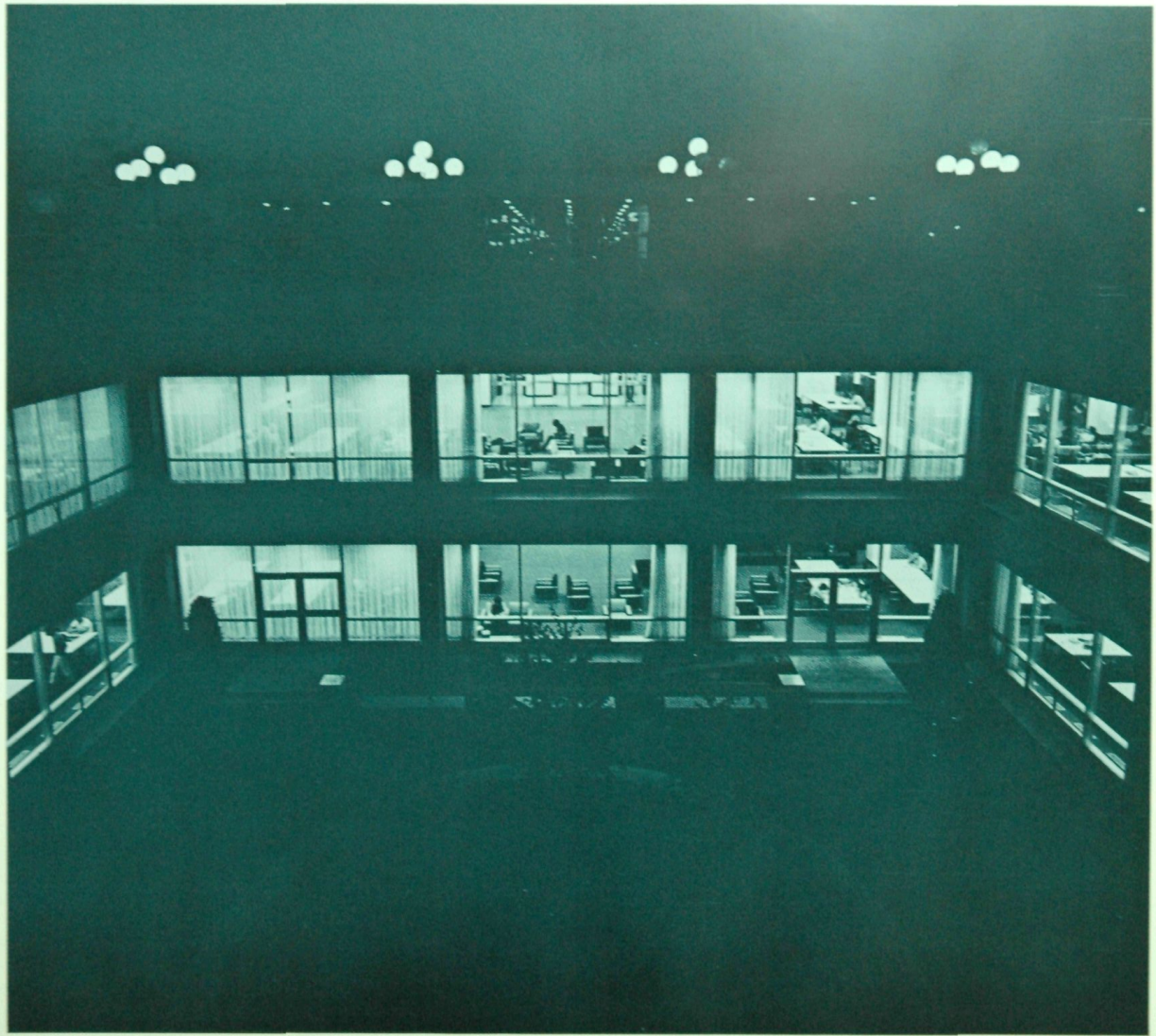




University of Illinois at Urbana-Champaign | UNDERGRADUATE LIBRARY





DEDICATION PROGRAM
THE UNDERGRADUATE LIBRARY
University of Illinois
at Urbana-Champaign
Lincoln Hall Auditorium
November 15, 1969 10:00 A.M.

ROBERT B. DOWNS
Dean of Library Administration, Presiding

WELCOME
LYLE H. LANIER
Executive Vice-President and Provost

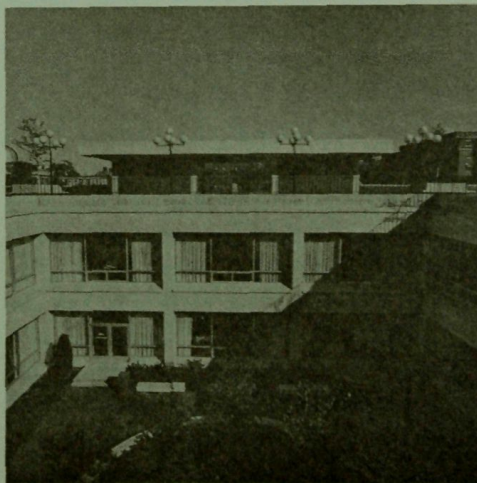
PRESENTATION OF BUILDING
AMBROSE RICHARDSON
Architect, Richardson, Severns,
Scheeler and Associates

ACCEPTANCE OF BUILDING
THEODORE A. JONES
Member, University of Illinois
Board of Trustees

REMARKS
JAMES HARMS
Chairman, Undergraduate
Student Association

INTRODUCTION OF SPEAKER
JACK W. PELTASON
Chancellor

ADDRESS
NORMAN A. GRAEBNER
Edward R. Stettinius Professor
of Modern American History
University of Virginia



The University of Illinois has had an undergraduate book collection since 1949 when the 25,000-volume collection of the discontinued Galesburg branch of the University was moved to Urbana and placed in a reading room on the first floor of the General Library Building.

Although the desirability of providing a more adequate undergraduate library was recognized from the start, strong impetus was given to this idea when the President's Third Faculty Conference, meeting at Allerton Park in 1960 to consider the topic "The Undergraduate Climate at the University," approved a resolution which recommended the establishment of a separate undergraduate library building with a book collection selected to meet undergraduate needs and organized in a less complex fashion than the General Library.

As planning proceeded, site studies pointed to the north-south mall directly east of the General Library as the ideal location for the new building. This site was central in relation to undergraduate classrooms and residence halls, and its proximity to the General Library provided easy accessibility between the two facilities. The decision to build an underground structure was made in order to maintain the open appearance of the mall.

The library is of modular design and constructed to provide maximum flexibility of space. It consists of two floors approximately 217 feet by 241 feet with a 72-foot square central court. A tunnel connects the Undergraduate Library with the General Library Building. The Undergraduate Library provides seats for 1,905 readers and has a book capacity of 150,000 volumes. Approximately two-thirds of the seating is at individual carrels 40 inches wide and 30 inches deep, with front and side panels extending 53 inches above the floor. The balance of the seating is at 4-foot by 6-foot tables or in lounge chairs. The intent is to provide generous work space with as much privacy as can be arranged in an unpartitioned area. Privacy is augmented by alternating seating modules with shelving modules, creating many smaller seating areas instead of a few large ones. Acoustical ceilings and carpeting are provided throughout in order to assure a maximum of quiet.

The upper level houses the card catalog, the reference and periodical collection, a browsing collection, part of the general book collection, staff offices, and a listening center. The latter consists of a control room and 106 listening stations designed to make available audio materials of all

kinds as required to supplement course lectures or for recreational purposes. The listening facility provides channels for eighty monaural or forty stereo programs, or some combination of these at one time, as well as access to AM-FM broadcasting.

The lower level contains the major portion of the general book collection, as well as the reserve books, and provides fourteen typing carrels. Four separate rooms are also provided on this level for the use of blind readers and their assistants. Copying machines are available on both levels.

In view of the anticipated heavy use of this library, two entrances are maintained, one at the east and one at the west, and students can check books out at circulation desks on either side. Exits are controlled by electrically operated turnstiles.

House phones are located strategically on both levels for the convenience of students seeking help from a staff member if one is not in the immediate area. Additional telephone and electrical conduits are also provided for eventual use in a computerized on-line circulation system. A public address system is employed to facilitate closing the library, and for paging in case of emergencies.

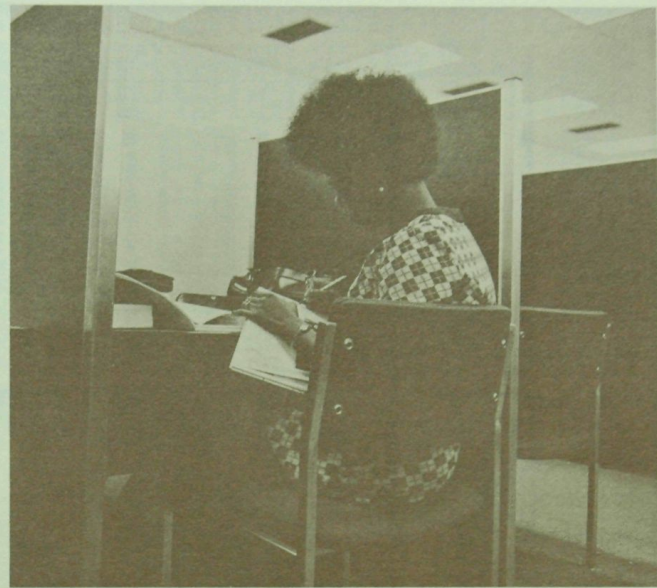
The new library is backed up by collections of the General Library and

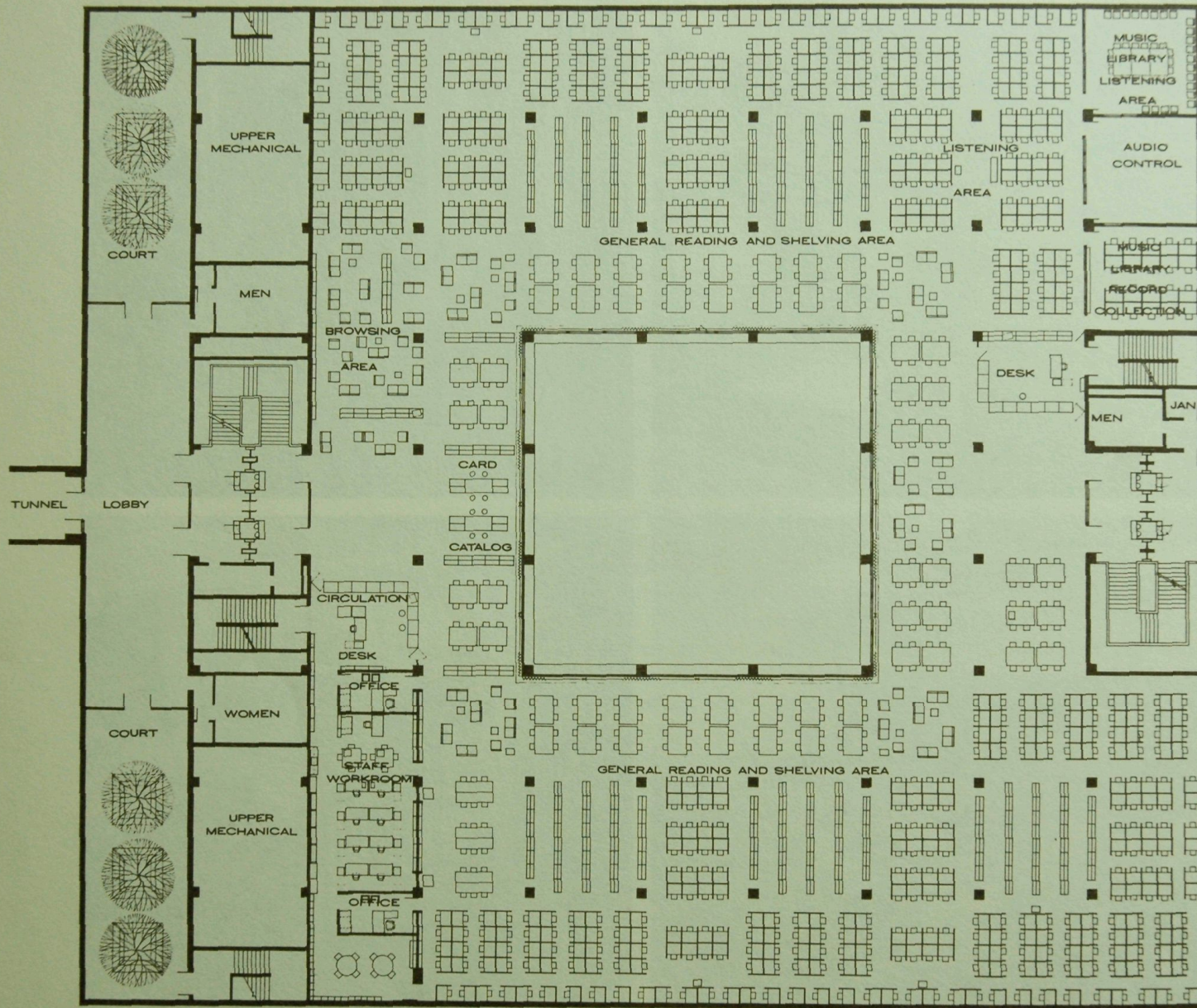
its numerous departmental branches, and it is expected that a large number of undergraduates will make increasing use of these existing facilities during their junior and senior years.

The surface area is an attractively landscaped and lighted plaza providing bench seating for those who wish to read outside in fair weather, and the central court is designed to serve a similar purpose. The two pavilions not only provide cover for the stairways, elevators, dumbwaiter, and certain needs of the mechanical system, but are designed to heighten the aesthetic effect of the plaza treatment. Space for expansion comparable to the size of the present structure is available for future needs.

The courtyard is dedicated to Edmund Janes James, a former president of the University, and the inscribed frieze around the top edge and other improvements in the courtyard were made possible through a generous gift from the Class of 1916.

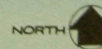
Construction of the Undergraduate Library was partially financed by a \$1,000,000 federal grant under the Higher Education Facilities Act of 1963, and the building was selected for a first honor award in the 1966 Design Award Program of the United States Department of Health, Education and Welfare.



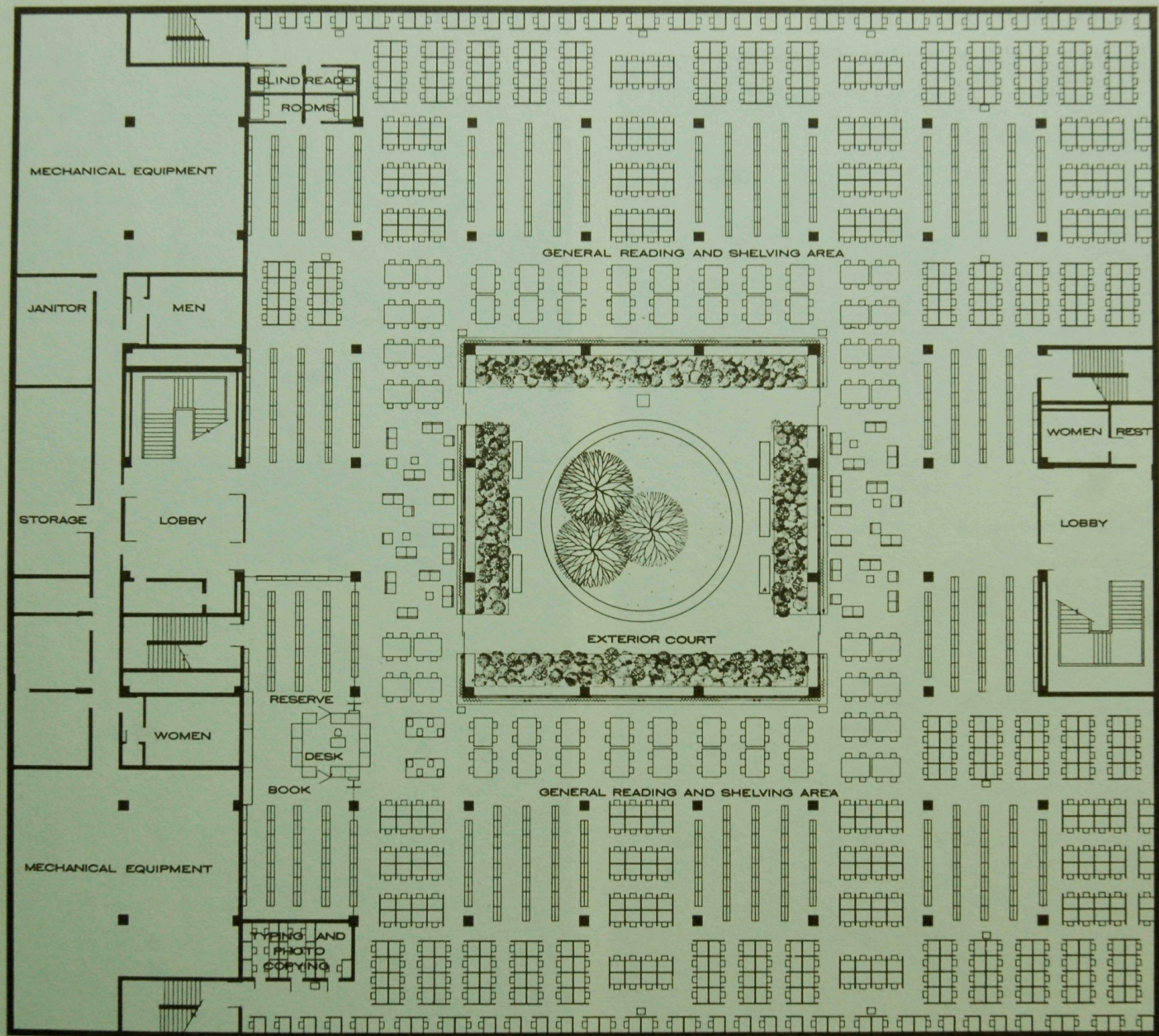


UPPER LEVEL PLAN

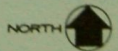
SCALE 0 4 8 16 FT



MECH
 JANIT
 STORAG
 MECH
 LOWER L
 SCALE



LOWER LEVEL PLAN
 SCALE 0 4 8 16 FT



UNDERGRADUATE LIBRARY

University of Illinois at Urbana-Champaign

Building Data

COST

Financed by state appropriation, Illinois Building Authority, and grant from United States Department of Health, Education and Welfare

Building construction	\$3,150,000
Movable equipment and furnishings.....	400,000
Landscaping, fees, utilities, and other costs.....	690,125
Total project costs.....	\$4,240,125

Unit cost (based on 98,689 gross square feet)

Building construction cost per square foot..	\$31.91
Total project cost per square foot.....	\$42.96

EXTERIOR DIMENSIONS

Lower level and upper level.....	241'9" x 217'8"
Two entrance pavilions.....	26' x 72'
Pedestrian tunnel	170' x 14'
Center court	72' x 72'
Two side courts.....	22' x 64'

AREAS

Gross area	98,689 square feet
Net (assignable) area.....	67,121 square feet
Ratio of net to gross.....	68

CAPACITIES

Total seating stations.....	1,899
Table seating	542
Lounge chairs	166
Carrel seating	1,191
Shelf capacity in volumes.....	150,000
Blind reader rooms.....	4
Typing carrels	14
Listening carrels	106



ARCHITECTS

Richardson, Severns, Scheeler & Associates, Inc., and
Clark, Altay and Associates

Consulting Engineers:

Clark, Dietz and Associates

Robert G. Burkhardt and Associates, Inc.

INTERIOR DESIGN

Dolores Miller and Associates Ltd.

CONTRACTOR

General: McCarthy-Hathman Construction Co.

SUBCONTRACTORS

Electrical: Brunkow Electric Co.

Mechanical: Fowler Plumbing & Heating Co.

Elevators: Dover Corp.

Dumbwaiter: Sedgwick Machine Works, Inc.

EQUIPMENT AND FURNISHINGS

Stacks: Estey Corporation

Carrels: The Howell Company

Listening equipment: Omni-Lab, Inc.

Chairs: The Howell Company

Reader tables: Rochell's Inc.

Lounge furniture: Gilbert A. Force Co.

Card catalogs: John E. Sjostrom Company

Counters: John E. Sjostrom Company

Turnstiles: Percy Turnstiles

Carpeting: Equipment Planners, Inc.

Index tables: Gilbert A. Force Company

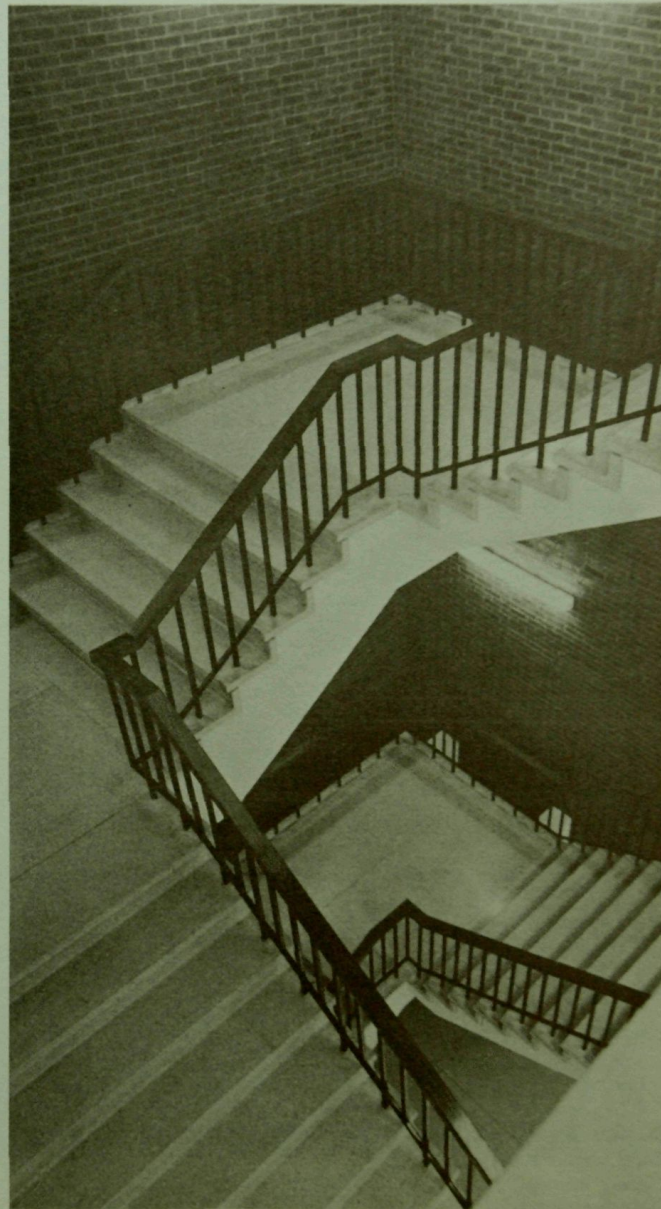
Draperies: Edwin Raphael Inc.

Control desks and book trucks: Shelco Systems, Inc.

Office equipment: All-Steel Equipment, Inc.

DEDICATION DATE

November 15, 1969



UNDERGRADUATE LIBRARY

University of Illinois at Urbana-Champaign

Building Data

COST

Financed by state appropriation, Illinois Building Authority, and grant from United States Department of Health, Education and Welfare

Building construction	\$3,150,000
Movable equipment and furnishings.....	400,000
Landscaping, fees, utilities, and other costs.....	690,125
Total project costs.....	\$4,240,125

Unit cost (based on 98,689 gross square feet)

Building construction cost per square foot..	\$31.91
Total project cost per square foot.....	\$42.96

EXTERIOR DIMENSIONS

Lower level and upper level.....	241'9" x 217'8"
Two entrance pavilions.....	26' x 72'
Pedestrian tunnel	170' x 14'
Center court	72' x 72'
Two side courts.....	22' x 64'

AREAS

Gross area	98,689 square feet
Net (assignable) area.....	67,121 square feet
Ratio of net to gross.....	68

CAPACITIES

Total seating stations.....	1,899
Table seating	542
Lounge chairs	166
Carrel seating	1,191
Shelf capacity in volumes.....	150,000
Blind reader rooms.....	4
Typing carrels	14
Listening carrels	106



ARCHITECTS

Richardson, Seaverns, Scheeler & Associates, Inc., and
Clark, Altay and Associates

Consulting Engineers:

Clark, Dietz and Associates

Robert G. Burkhardt and Associates, Inc.

INTERIOR DESIGN

Dolores Miller and Associates Ltd.

CONTRACTOR

General: McCarthy-Hathman Construction Co.

SUBCONTRACTORS

Electrical: Brunkow Electric Co.

Mechanical: Fowler Plumbing & Heating Co.

Elevators: Dover Corp.

Dumbwaiter: Sedgwick Machine Works, Inc.

EQUIPMENT AND FURNISHINGS

Stacks: Estey Corporation

Carrels: The Howell Company

Listening equipment: Omni-Lab, Inc.

Chairs: The Howell Company

Reader tables: Rochell's Inc.

Lounge furniture: Gilbert A. Force Co.

Card catalogs: John E. Sjostrom Company

Counters: John E. Sjostrom Company

Turnstiles: Perey Turnstiles

Carpeting: Equipment Planners, Inc.

Index tables: Gilbert A. Force Company

Draperies: Edwin Raphael Inc.

Control desks and book trucks: Shelco Systems, Inc.

Office equipment: All-Steel Equipment, Inc.

DEDICATION DATE

November 15, 1969







