

The Building Program  
at the University of Illinois  
During the Eight Years  
1934 - 1942



THE LIBRARY OF THE  
JUN 17 1943  
UNIVERSITY OF ILLINOIS

# BOARD OF TRUSTEES OF THE UNIVERSITY OF ILLINOIS

## MEMBERS EX OFFICIO

DWIGHT H. GREEN

Governor of Illinois  
Springfield

JOHN A. WIELAND

Superintendent of Public Instruction  
Springfield

## ELECTED MEMBERS

Term 1937-1943

HOMER MAT ADAMS  
20 N. Wacker Drive, Chicago

JAMES M. CLEARY  
310 S. Michigan Avenue, Chicago

CHESTER R. DAVIS  
69 W. Washington Street, Chicago

Term 1939-1945

FRANK A. JENSEN  
LaSalle

ORVILLE M. KARRAKER  
405 Centennial Building, Springfield

DR. KARL A. MEYER  
Cook County Hospital, Chicago

Term 1941-1947

JOHN R. FORNOF  
122 S. Bloomington Street, Streator

MRS. HELEN M. GRIGSBY  
Pittsfield

PARK LIVINGSTON  
20 N. Wacker Drive, Chicago

## OFFICERS OF THE BOARD

DR. KARL A. MEYER, President; Chicago

HARRISON E. CUNNINGHAM, Secretary; Urbana

FRANK M. GORDON, Treasurer; First National Bank, Chicago

LLOYD MOREY, Comptroller; Urbana

---

## ADMINISTRATIVE OFFICERS OF THE UNIVERSITY

ARTHUR CUTTS WILLARD, B.S., D.Eng., LL.D., President

ALBERT JAMES HARNO, B.S., LL.B., LL.D., Litt.D., Provost

ROBERT DANIEL CARMICHAEL, Ph.D.,  
Dean of the Graduate School

RAYMOND B. ALLEN, M.D., Ph.D., Executive Dean  
of the Chicago Colleges

GEORGE PHILIP TUTTLE, B.S., Registrar

FRED HAROLD TURNER, Ph.D., Dean of Men

MARIA LEONARD, A.M., Litt.D., Dean of Women

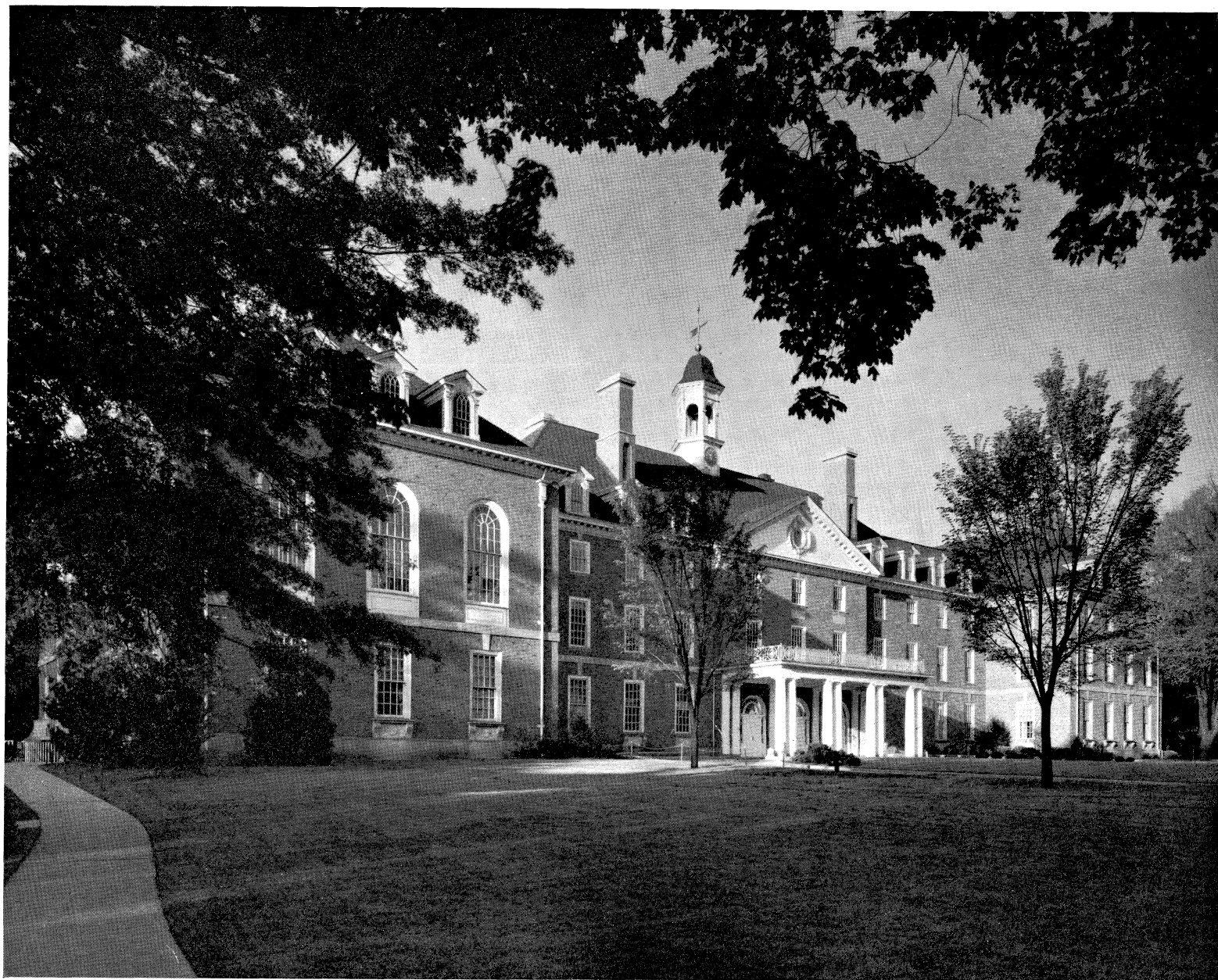
Note: The general offices of the University are open on weekdays  
from 8 a.m. to 12 m. and from 1 to 5 p.m. except Saturday afternoon



C.  
Ilbu Wbu  
cop. 2

## CONTENTS

	Page
Alma Mater Statue Group . . . . .	2
Introductory Statement . . . . .	3
Illini Union Building . . . . .	4
Gregory Hall . . . . .	5
Men's Residence Hall . . . . .	6
McKinley Hospital Addition . . . . .	7
Library Addition . . . . .	8
Metallurgical Laboratory . . . . .	9
William Lamont Abbott Power Plant . . . . .	10
Interior View of William Lamont Abbott Power Plant . . . . .	11
Main Service Tunnel . . . . .	12
Expansion Loop in New Steam Distribution System . . . . .	13
Water Tower for South Campus . . . . .	14
Geological Survey Laboratory . . . . .	15
Natural Resources Building, North Front . . . . .	16
Natural Resources Building and Garages, South Front . . . . .	17
University of Illinois in Chicago . . . . .	18
Dentistry, Medicine, and Pharmacy Building (Second Unit) . . . . .	19
Neuropsychiatric Institute . . . . .	20
Chicago Illini Union Building . . . . .	21
Buildings Purchased	
Illini Hall . . . . .	22
Union Arcade Building . . . . .	23
Buildings Razed	
University Hall . . . . .	24
College of Medicine . . . . .	25
College of Dentistry . . . . .	26
College of Pharmacy . . . . .	27
Schedule of Costs of New Building Construction . . . . .	28
Schedule of Costs of Buildings Razed . . . . .	29
Other Physical Plant Improvements, 1934-1942 . . . . .	30 and 31
Data on Power Plant Performance . . . . .	32



**ILLINI UNION BUILDING**  
(Urbana)

Student-faculty-alumni social center building. Financed by Federal grant, a loan, and contributions from Alumni. Completed in 1941 at a cost of \$1,483,004. See statement on page 28.



A class and lecture room building, housing School of Journalism, College of Education, and other departments. Completed in 1940 at a cost of \$885,711. For source of funds see statement on page 28.

**GREGORY HALL**  
(Urbana)





**MEN'S RESIDENCE HALL**  
(Champaign)

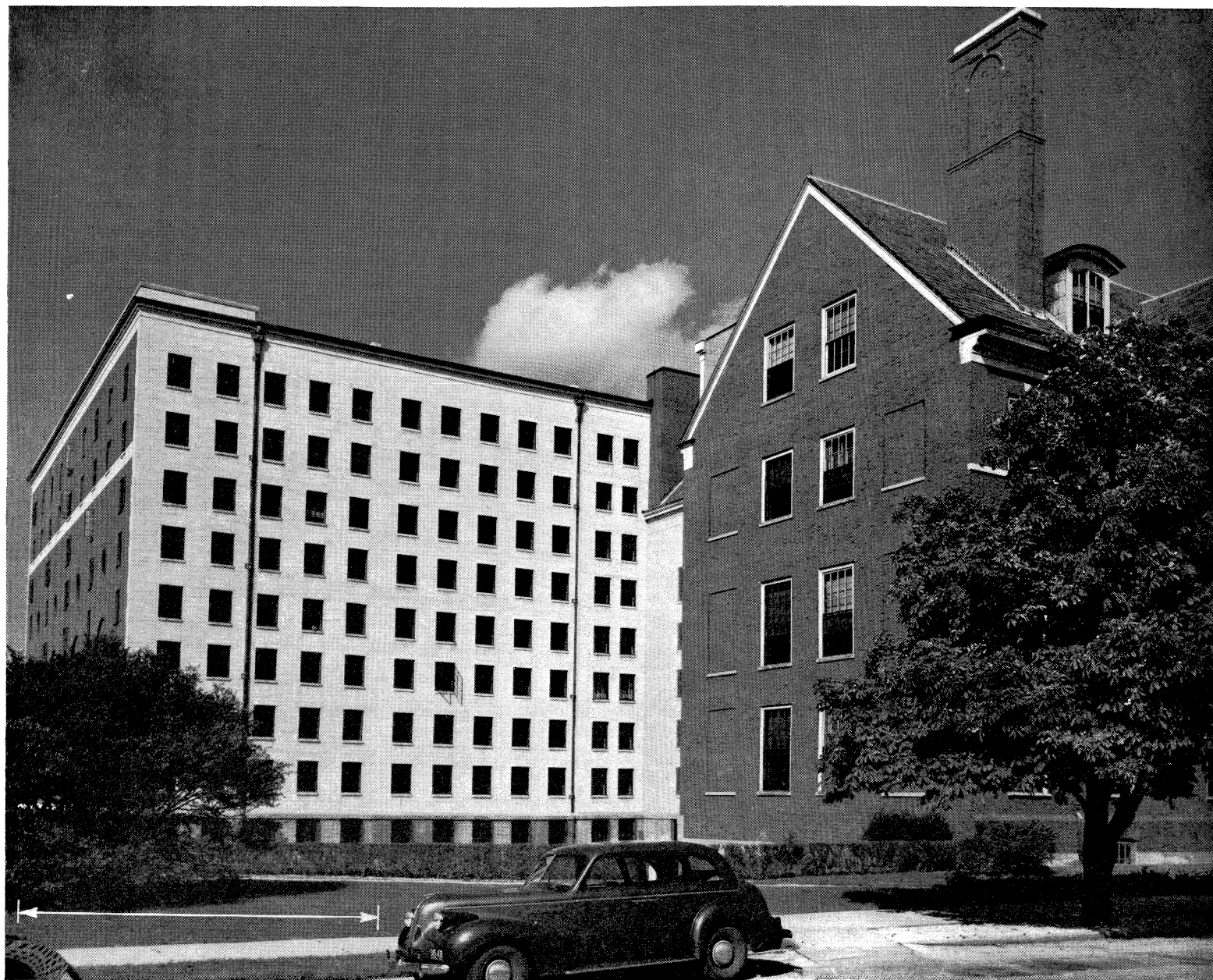
There are five units known as Barton, Clark, Flagg, Lundgren, and Noble Houses. Financed by a loan. Completed in 1941 at a cost of \$690,563. See statement on page 28.



This addition forms the South Wing and may be used as a separate unit for contagious diseases. Completed in 1940 at a cost of \$181,101. See statement on page 28.

**McKINLEY HOSPITAL ADDITION**  
(Urbana)





**LIBRARY ADDITION**  
(Champaign)

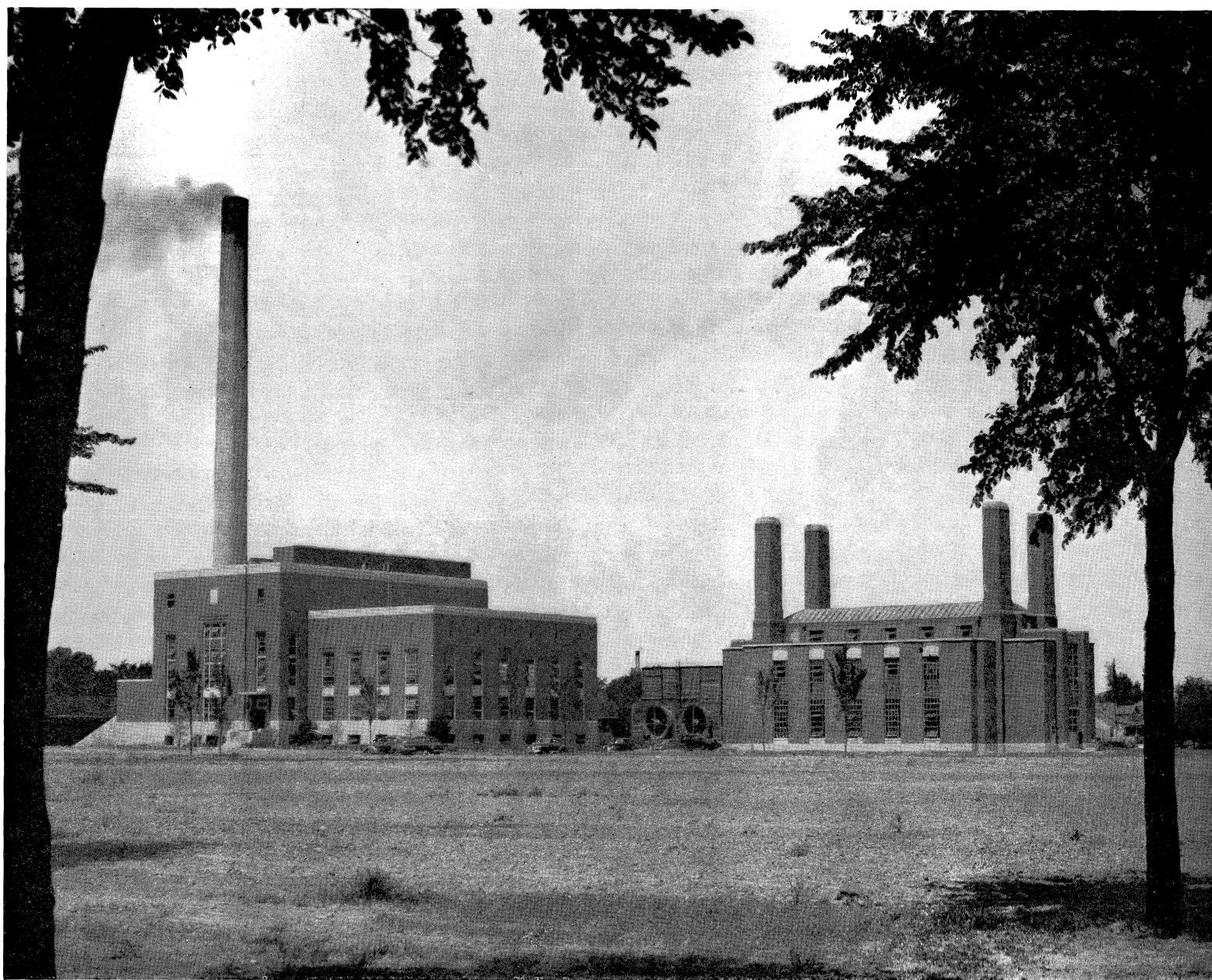
This addition to the University Library has a capacity of 500,000 volumes. Completed in 1940 at a cost of \$222,216. See statement on page 28.



For teaching and research in the College of Engineering. Built with State funds only. Completed in 1936 at a cost of \$49,998.

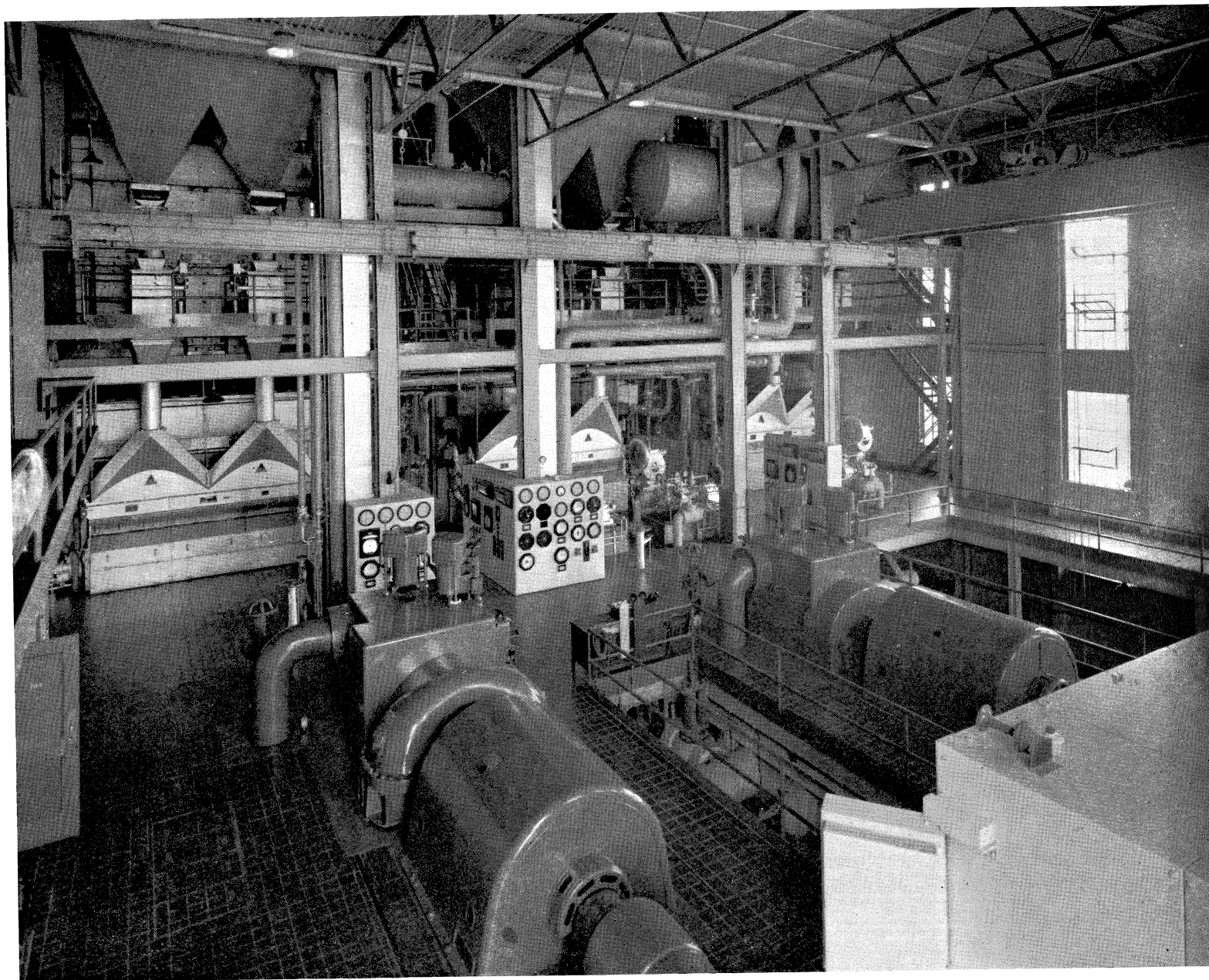
**METALLURGICAL LABORATORY**  
(Urbana)





**WILLIAM LAMONT ABBOTT POWER PLANT  
With GEOLOGICAL SURVEY LABORATORY at right**  
(Champaign)

This plant provides light, heat, and power for all buildings at Urbana-Champaign. Built with State funds only. Completed in 1940 at a cost of \$1,685,934, including tunnels, conduits, and mains. See page 32.



Two turbines in foreground, each of 3,000 k.w. capacity and space for third. Three boilers in background, each of 80,000 lb. per hour steam capacity at 325 lb. gage pressure with 200° F. superheat. See page 32 for information on performance and equipment.

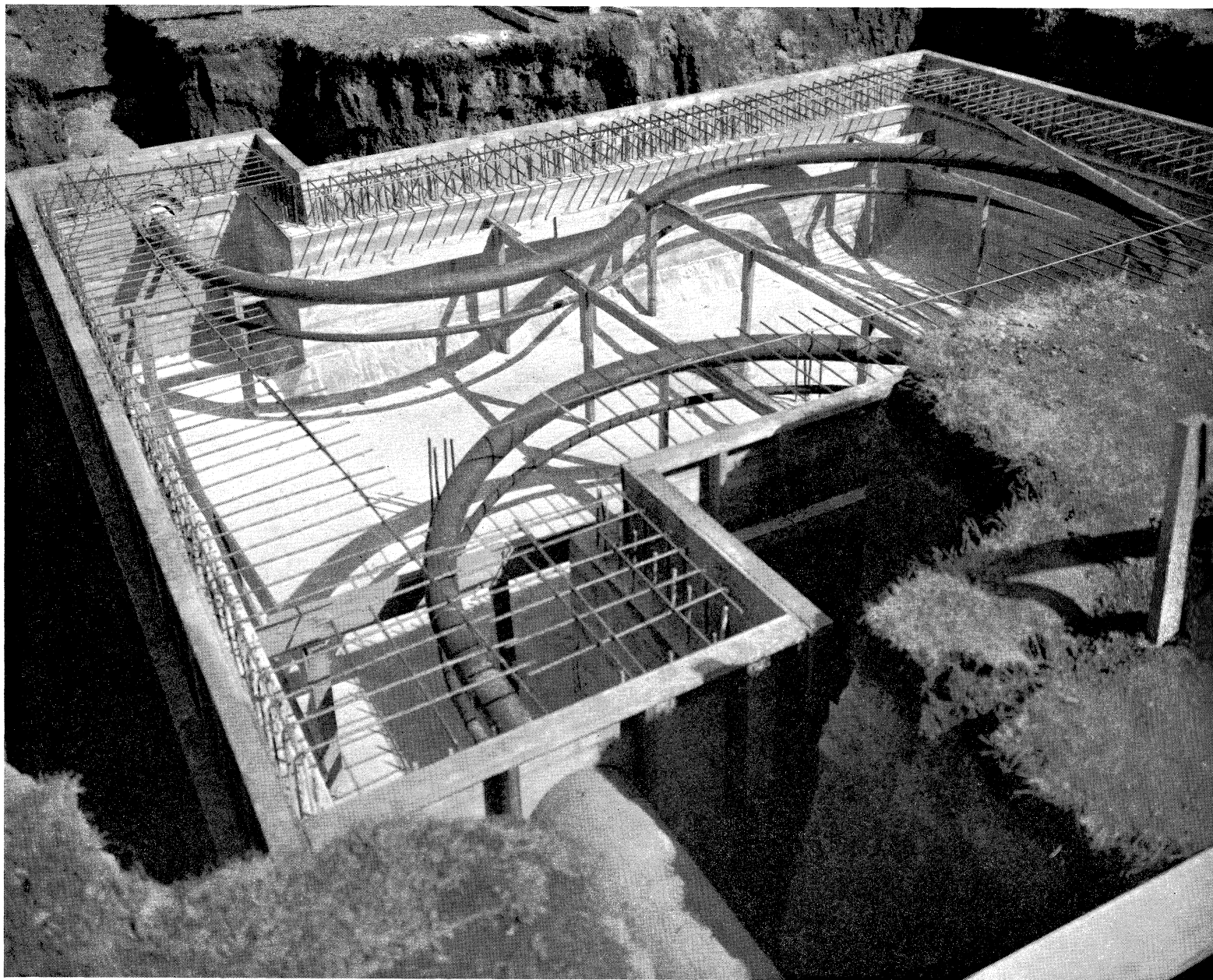
**INTERIOR VIEW OF ABBOTT POWER PLANT**  
(Champaign)





**MAIN SERVICE TUNNEL**  
(Champaign)

Distribution System from Abbott Power Plant to Library. Length 4200 feet. This tunnel carries: Two 12-in. low pressure steam mains; one 8-in. high or low pressure steam main; one 6-in. high pressure main; two 4-in. condensate return mains; and one 2½-in. compressed air line. Completed in 1940 as part of Power Plant appropriation.

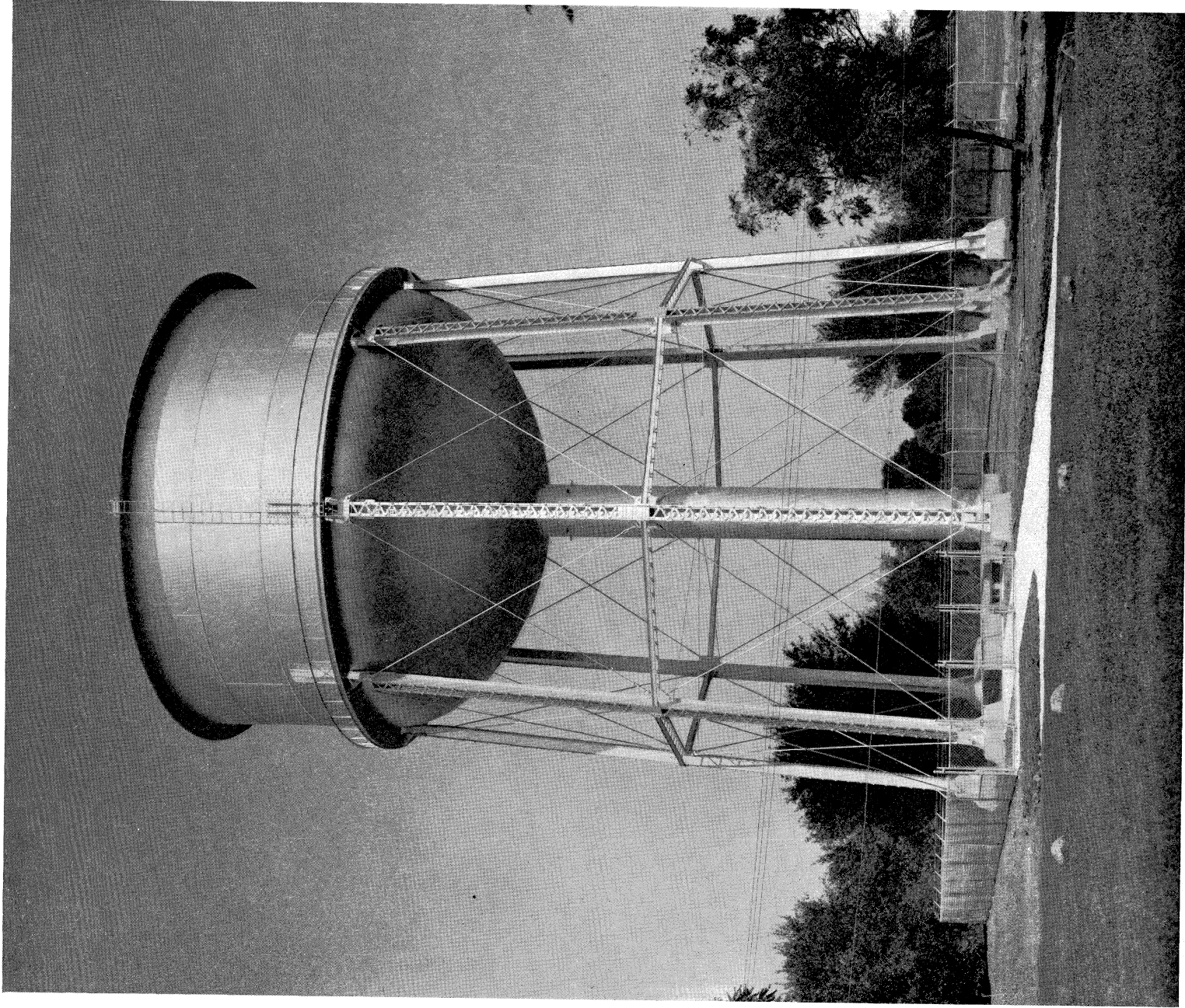


One of four expansion loops in new steam distribution system. This loop is on new line serving Stadium. Completed in 1941 as part of Power Plant appropriation.

## EXPANSION LOOP IN STEAM SYSTEM

(Champaign)

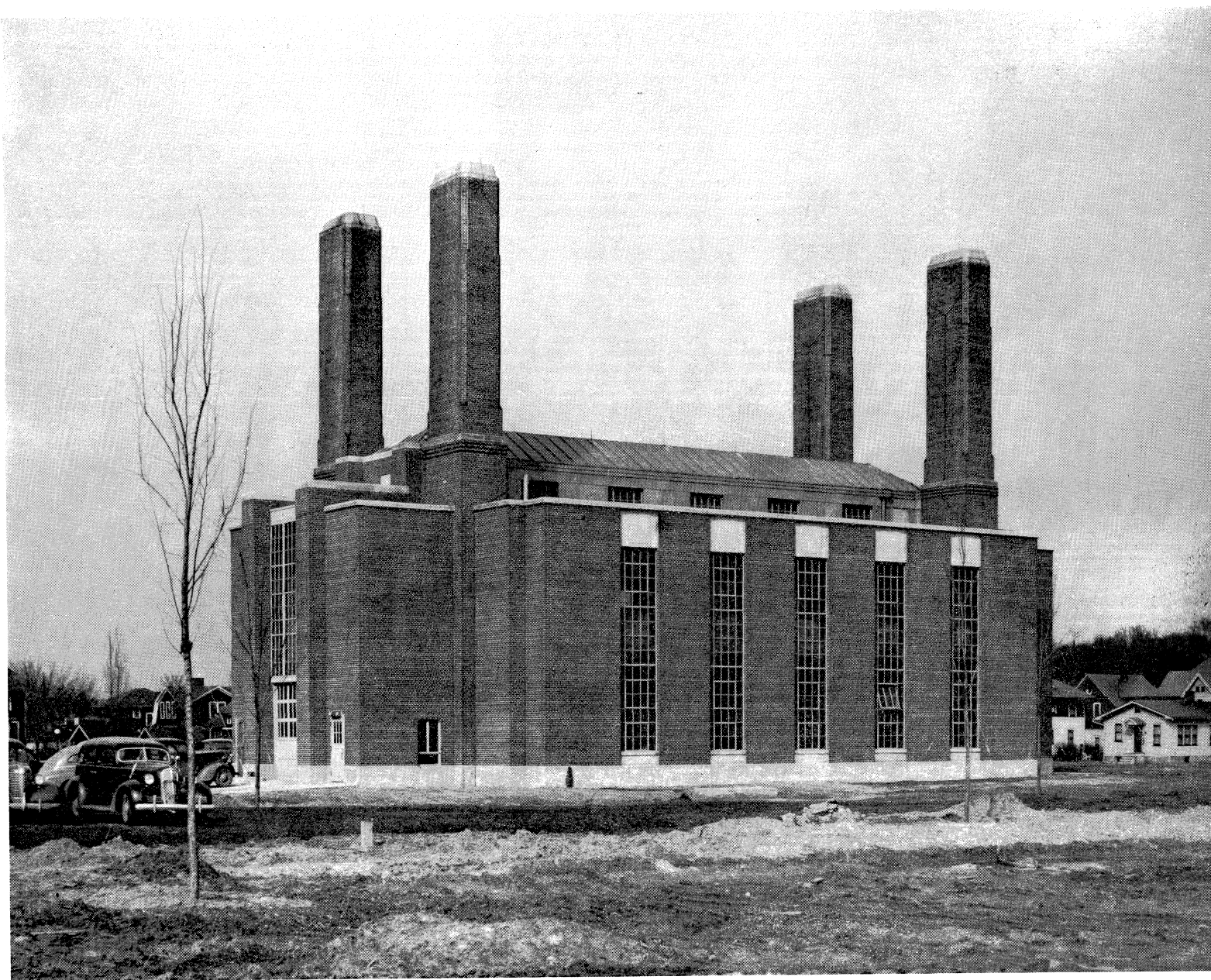




**WATER TOWER FOR SOUTH CAMPUS**

(Champaign)

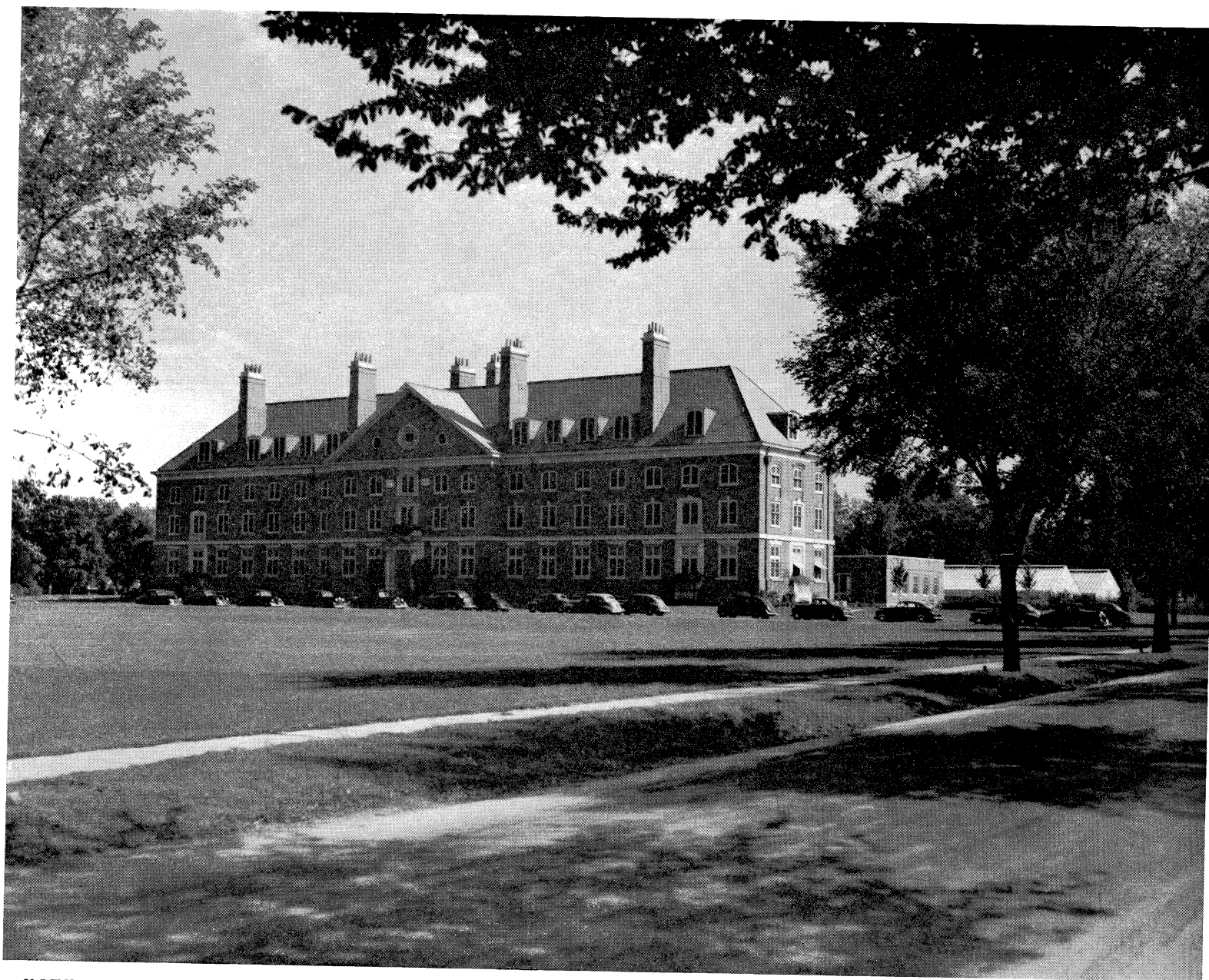
Addition to University Water System, including mains and two wells.  
Built with State funds only. Completed in 1935 at a cost of \$90,000.



The appropriation for this building was made to the State Department of Registration and Education. Built with State funds only. Completed in 1940 at a cost of \$95,000.

**GEOLOGICAL SURVEY LABORATORY**  
(Champaign)





**NATURAL RESOURCES BUILDING (North Front)**  
(Champaign)

This building houses the State Geological and Natural History Surveys and was built from an appropriation to the State Department of Registration and Education. Completed in 1940 at a cost of \$582,335. See statement on page 28.





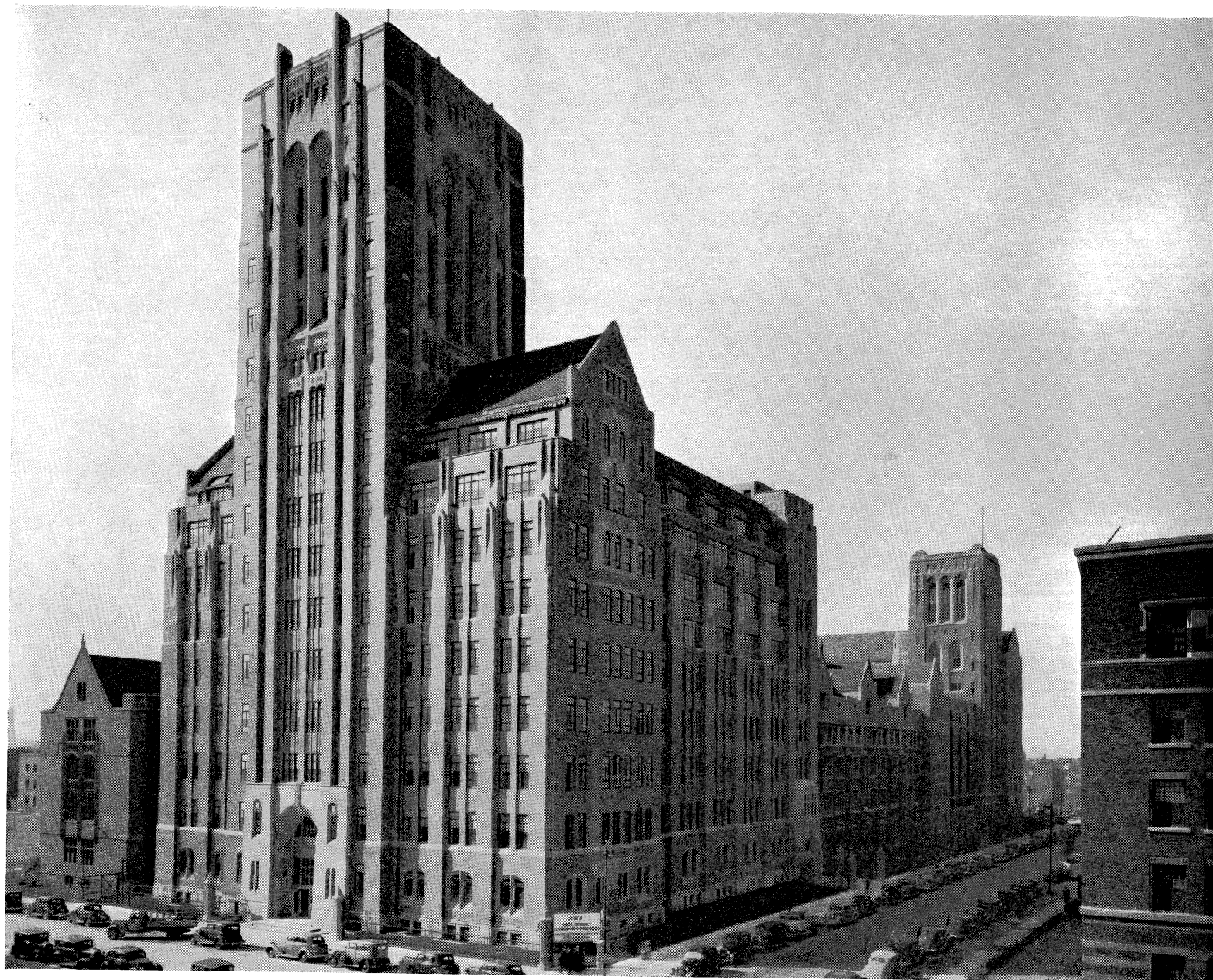
See description on opposite page. The Garages and Service Buildings were built from an appropriation of \$70,000 to the State Department of Registration and Education. Completed in 1942.

**NATURAL RESOURCES BUILDING and GARAGES (South Front)**  
(Champaign)



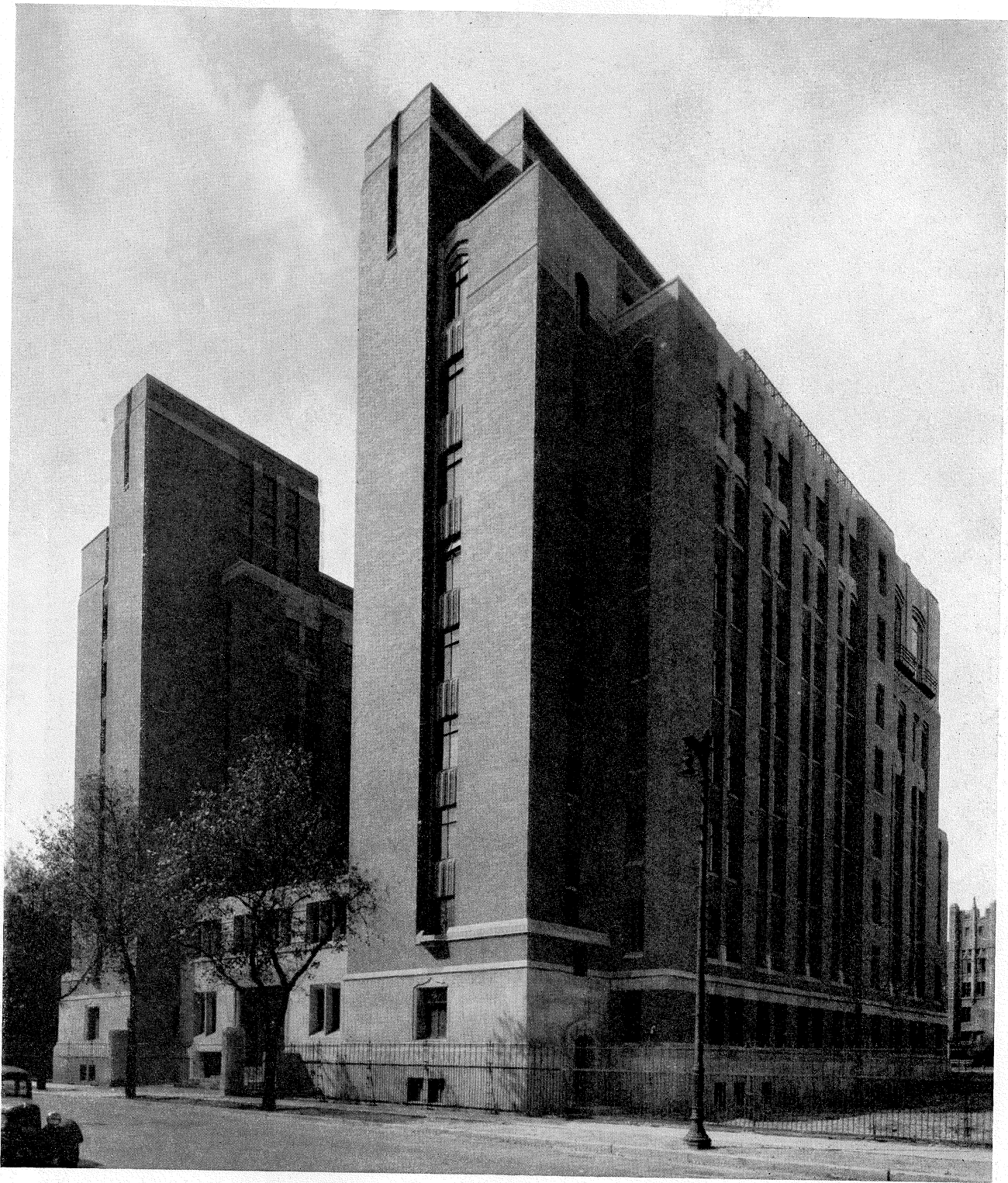
This general air view shows the Cook County Hospital Group on the West Side, as well as the University of Illinois and State Department of Public Welfare Buildings, comprising the new Medical Center.





The large unit in the foreground completes the classrooms and laboratory facilities for the University of Illinois Colleges in Chicago. Completed in 1937 at a cost of \$1,818,836.

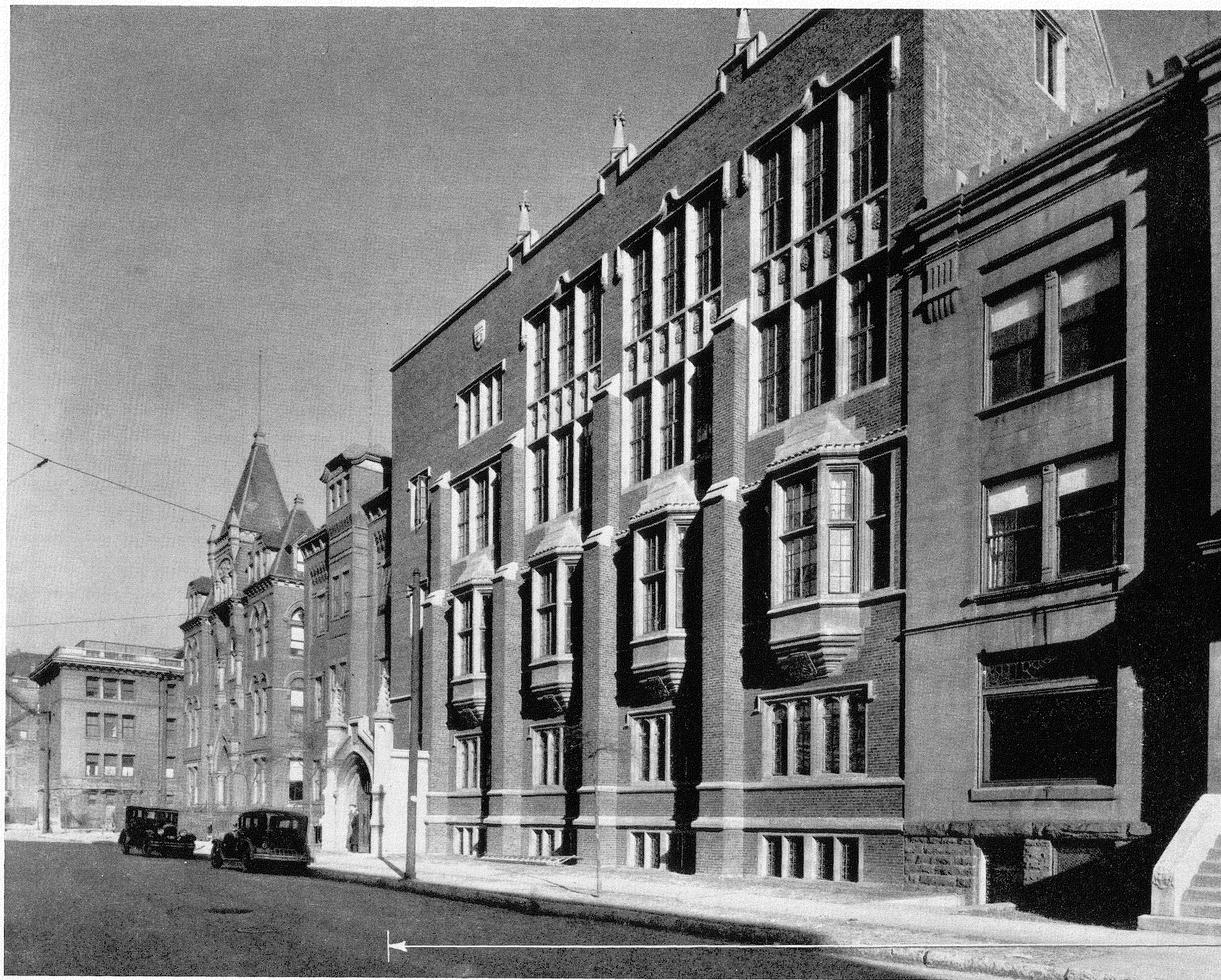
**DENTISTRY, MEDICINE, AND PHARMACY BUILDING (Second Unit)**  
(Chicago)



**NEUROPSYCHIATRIC INSTITUTE**  
(Chicago)

This building does not belong to the University of Illinois, but it houses two important departments of the University—Neurological Surgery and Psychiatry. It is adjacent to the Colleges of Dentistry, Medicine, and Pharmacy, and was built in 1941 by the Department of Public Welfare from an appropriation of \$834,750 plus Federal (P.W.A.) grant.





This building, formerly part of the College of Pharmacy, serves as a social center for students-faculty-alumni in Chicago. The two buildings with towers have been razed. See statement on page 28. Remodeled in 1941 at a cost of \$101,274.

**CHICAGO ILLINI UNION BUILDING**





**ILLINI HALL**  
(Champaign)

This building houses the Division of University Extension, the University Housing Division, Student Employment Service, and a small Dormitory for men. Purchased from Illinois Union Corporation in 1938, at a cost of \$99,130.





This is a general service building housing the Illini Union Bookstore and several other commercial activities. Purchased from Illinois Union Corporation in 1938, at a cost of \$80,152.

**UNION ARCADE BUILDING**  
(Champaign)





**UNIVERSITY HALL**  
(Urbana)

Built in 1873; razed in 1938. The new Gregory Hall (page 5) provides for all departments formerly housed in this building. The total cost was \$163,327.





Originally the West Division High School, later purchased by the College of Physicians and Surgeons, and acquired by the University in 1913. This old building cost \$178,633. The departments formerly housed in it are now in the new Dentistry, Medicine, and Pharmacy Building (page 19). Razed in 1938.

**FORMER COLLEGE OF MEDICINE BUILDING**  
(Chicago)





**COLLEGE OF DENTISTRY BUILDING**  
(Chicago)

Originally, College of Physicians and Surgeons. This old building housed the College of Dentistry which is now in the new Dentistry, Medicine, and Pharmacy Building (page 19). Acquired in 1913 at a total cost of \$68,349. Razed in 1938.





The two buildings with flag poles housed part of the College of Pharmacy which is now in the new Dentistry, Medicine, and Pharmacy Building (page 19). Acquired in 1915 at a cost of \$239,636. Razed in 1939.

**COLLEGE OF PHARMACY BUILDINGS**  
(Chicago)

# STATEMENT OF COSTS OF NEW BUILDINGS AND EQUIPMENT BY SOURCES OF FUNDS. JULY 1, 1933, TO JUNE 30, 1942

	Total	State Tax Revenues	University Income Fund	United States Grants	Loans	Gifts from Private Sources
Metallurgical Laboratory Addition.....	\$ 49 998	\$ 49 998				
Dentistry, Medicine, and Pharmacy Building, Second Unit.....	1 818 836	373 112		\$354 724	\$1 091 000	
Library Addition.....	222 216		\$ 2 416	219 800		
McKinley Hospital Addition, South Wing.....	181 101		347	180 754		
Gregory Hall.....	888 713	703 002	15 440	170 271		
Illini Union Building (Urbana).....	1 483 004		90 375	510 125	705 653	\$176 851 <sup>6</sup>
Abbott Power and Heating Plant and Distribution System.....	1 685 934	1 675 000	10 934			
Men's Residence Hall.....	690 563		50 366		640 197	
Chicago Illini Union Building.....	101 274		40 190	( <sup>2</sup> )	61 084 <sup>1</sup>	
Water Tower with New Wells and Water Mains...	90 000	90 000				
Total University Funds.....	\$7 211 639 <sup>3</sup>	\$2 891 112	\$210 068	\$1 435 674	\$2 497 934	\$176 851 <sup>6</sup>
Natural Resources Building.....	582 335 <sup>5</sup>	295 472 <sup>5</sup>	18 500	268 363		
Natural Resources Building Garage.....	70 000 <sup>5</sup>	70 000 <sup>5</sup>				
Geological Survey Laboratory.....	95 000 <sup>5</sup>	95 000 <sup>5</sup>				
Total <sup>4</sup> .....	<u>\$7 958 974<sup>6</sup></u>	<u>\$3 351 584</u>	<u>\$228 568</u>	<u>\$1 704 037</u>	<u>\$2 497 934</u>	<u>\$176 851<sup>6</sup></u>

<sup>1</sup>\$18,401 not capitalized. <sup>2</sup>U. S. grant of \$62,080 not capitalized. <sup>3</sup>Does not include equipment belonging to the State of Illinois. <sup>4</sup>Not including Neuro-psychiatric Institute, a building belonging to the State of Illinois, and built upon land owned by the State of Illinois, adjacent to Dentistry, Medicine, and Pharmacy Building and Research and Educational Hospitals from appropriations to Department of Public Welfare. Approximate cost of \$834,750 from State funds in addition to a Federal grant. <sup>5</sup>State appropriation was made to the Department of Registration and Education. <sup>6</sup>Contributions as of November 1, 1942, are \$209,255; grand total for new buildings and equipment, \$7,991,378.

## GIFTS

The University of Illinois has received as contributions to the above building program \$1,435,000 from Federal sources in outright grants and nearly \$250,000 subscribed by Alumni for furnishings and equipment for the Illini Union Building, total \$1,685,000.

*Special Note:* A State appropriation of \$125,000 for a Band Building was made for the 1941-43 biennium, but construction was postponed on account of war priorities.



## MAJOR BUILDINGS RAZED

JULY 1, 1933, TO JUNE 30, 1942

	Date Added to Inventory	Value of Property Razed	Year Razed
University Hall.....	1873	\$163 327 24	1937-38
Dental Building (old).....	1913	68 349 23	1937-38
Medical Building (old).....	1913	178 633 29	1937-38
Pharmacy (north units).....	1915	239 626 98 <sup>1</sup>	1938-39

---

<sup>1</sup>Remaining value of building \$246,052.59 transferred to "The University of Illinois Foundation" to be remodeled for use as a Student-Faculty Union building.

## OTHER IMPROVEMENTS MADE DURING THE EIGHT YEARS 1934-1942

A list of minor capital improvements at the University of Illinois, Urbana-Champaign and Chicago, since July 1, 1934. These items are entirely distinct from ordinary building maintenance, repairs, and replacements. Approximate total cost, \$450,000.

Telephone Exchange  
Radio Transmitter Station and Tower  
Remodeling for Transfer of Departments Housed in University Hall  
when This Building Was Razed  
Illini Hall Remodeling  
Remodeling Dentistry, Medicine, and Pharmacy Building in Chicago  
to Rehouse College of Pharmacy  
Steam Tunnel to Residence Halls  
Additional Twelve-inch Steam Main from Power Plant  
Skating Rink Floor  
Animal Husbandry Poultry Barn  
Herdsman's Cottage, Dairy Husbandry Department  
Scale House  
Swine Feeding Shed  
Addition to Sheep Feeding Shed  
Walks and Drives  
Connecting Link and New Stairs in Gymnasium Annex  
Horticultural Horse Barn  
Animal Pathology Incinerator Rebuilding  
Steam Conduit to McKinley Hospital  
Steam Main to Memorial Stadium  
Fire Station Remodeling  
Electrical Engineering Laboratory Remodeling  
Electrical Engineering Annex Remodeling



Nuclear Radiation Laboratory Remodeling  
 Garage and Storeroom Additions  
 Electrical Load Center at Noyes Chemistry Laboratory  
 Parking Yards (Automobile and Bicycle)  
 Reconstruction Mining Laboratory  
 Extension of Water Main to Abbott Power Plant  
 Remodeling—Administration Building Basement for Tabulating Office and Storage,  
 and Print Shop  
 (Mumford Hall) — Remodeling New Agriculture Building Basement  
 Agronomy Drying Shed  
 (Altgeld Hall) — Law Library—Reading Room and Reconstruction of Dome  
 Women's Residence Halls—Recreation Rooms, Kitchens, and Additional Rooms  
 Remodeling Classrooms and Offices, Engineering Hall and Commerce Building  
 Dairy Manufactures Building—New Floors and Incidental Remodeling  
 Replacement Underfloor Sewerage System—Laura B. Evans Residence Hall  
 Service Building—Illinois Field  
 Remodeling Lincoln Hall for Department of English Office, College of Liberal  
 Arts and Sciences Office, and Air Conditioning of Theatre  
 McKinley Hospital Kitchen Remodeling  
 Physics Building Incidental and General Remodeling  
 Fence at Brownfield Woods  
 Remodeling Room 123 Woman's Building  
 Weatherstripping of Ceramics Building, Noyes Chemistry Laboratory,  
 Administration Building, and Engineering Hall  
 Installation of Zone Heat Controls in Commerce Building  
 Milking Parlor at Dairy Barn  
 Agronomy Service Building  
 Water Storage Tank and New Twelve-inch Main to Filtration Plant  
 Two New Wells and Three New Well Houses  
 Auditorium Remodeling

## COMPARATIVE DATA ON ABBOTT POWER PLANT PERFORMANCE

### Generation and Consumption of Power and Steam in Relation to Coal Burned

#### URBANA DEPARTMENTS

	1932-33	1941-42	Percentage of Increase or Decrease
Building Cubage Heated.....	55,981,863	63,277,352	+ 13.0
Electric Power			
Generated—(K.W.H.).....	5,689,800	12,193,400	+114.3
Purchased—(K.W.H.).....	1,446,900	None	
Sold—(K.W.H.).....	None	324,500	
Consumed—(K.W.H.).....	7,136,700	11,868,900	+ 66.3
Coal Burned (Tons).....	37,932.77	34,191.30	— 9.9
Steam to Heat (1000 lbs.).....	337,142	311,324.2	— 7.7

The turbines in the Power Plant are of (1) extraction-condensing, and (2) straight non-condensing type. The boilers are single cross drum, water-tube type with completely water-cooled walls. Each boiler is provided with a cyclone dust collector, economizer, and air heater.

THE LIBRARY OF THE  
JUN 17 1943  
UNIVERSITY OF ILLINOIS



