

UNIVERSITY OF ILLINOIS

Chicago Illini Union

715 South Wood Street



The frontispiece and contents of this booklet give you a brief introduction to the new Chicago Illini Union. A little over a year ago this building was vacated by the College of Pharmacy which found new and better quarters in the nearby Medical and Dental College Laboratories Building. The Board of Trustees approved the recommendation of the University administration that the building be converted for the use of students, faculty, and alumni for social and recreational purposes.

It is my earnest hope that you will make the Union a vital and constructive part of your lives on the Chicago Campus. The great professions of the medical sciences serve the highest ideals of humanity. The University, through the creation of the Union, recognizes in a practical way the importance of social, recreational, and cultural activities in the well-rounded life of professional men and women.

Please accept my best wishes for your success and happiness in this new venture.

Cordially yours,

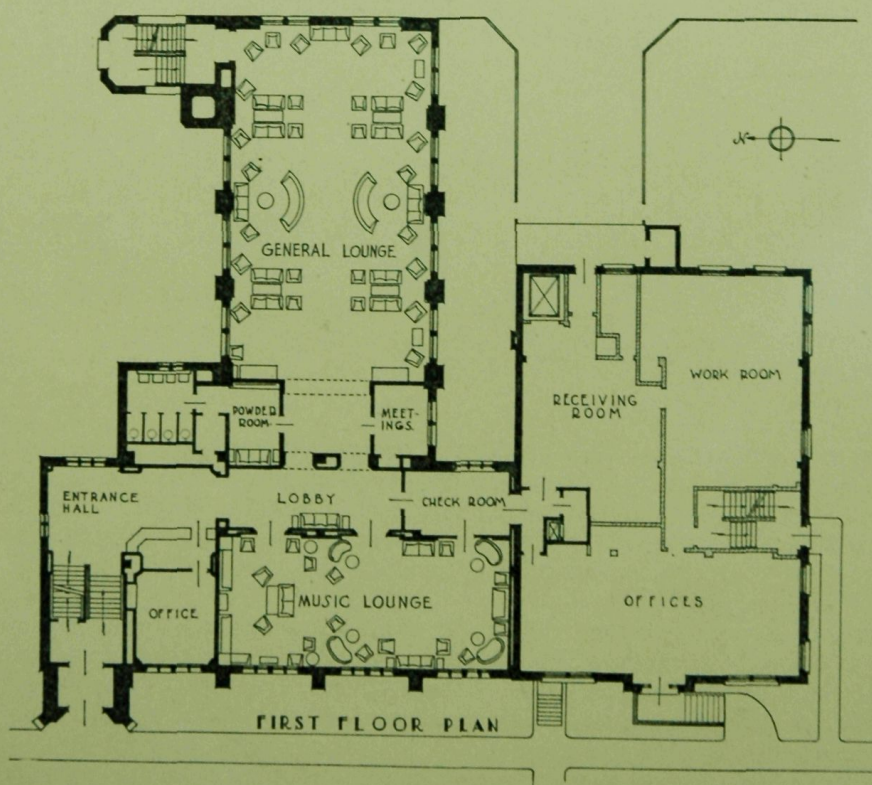
A. C. Willard

President

FOR many years there has been a need on the Chicago Campus of the University of Illinois for an official organization whose sole function would be to plan and supervise a cultural, social, and recreational program for the students attending the Colleges of Dentistry, Medicine, and Pharmacy. The local environment of the colleges has been both a definite handicap to such a program, and a strong stimulus for one. Now, under a trust agreement between the University of Illinois Foundation, and the University of Illinois, with funds made available through a loan from a private source, and with the assistance of the Works Progress Administration, it has become possible to create the new Chicago Illini Union, designed to organize social and recreational activities and supply food service for students, faculty, and alumni. Those who have planned this new project are enthusiastic and hope the Chicago Illini Union will receive complete cooperation from all groups entitled to the privileges of the building (undergraduate students, graduate students, university staff members, and alumni) and will make full use of the Chicago Illini Union Building.

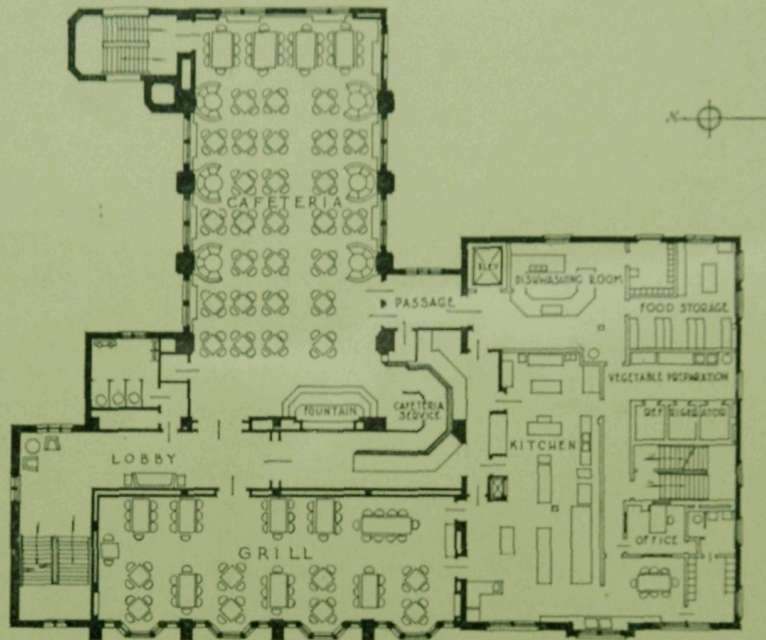
The new Chicago Illini Union is located in two buildings previously occupied by the College of Pharmacy at 715 South Wood Street. The buildings have been completely remodeled and refurnished throughout. Study of the floor plans will indicate how these buildings have been adapted to the purposes intended.

The first floor is given over principally to two lounges, the general lounge in the east wing of the building, and the music lounge in the front part of the building. The

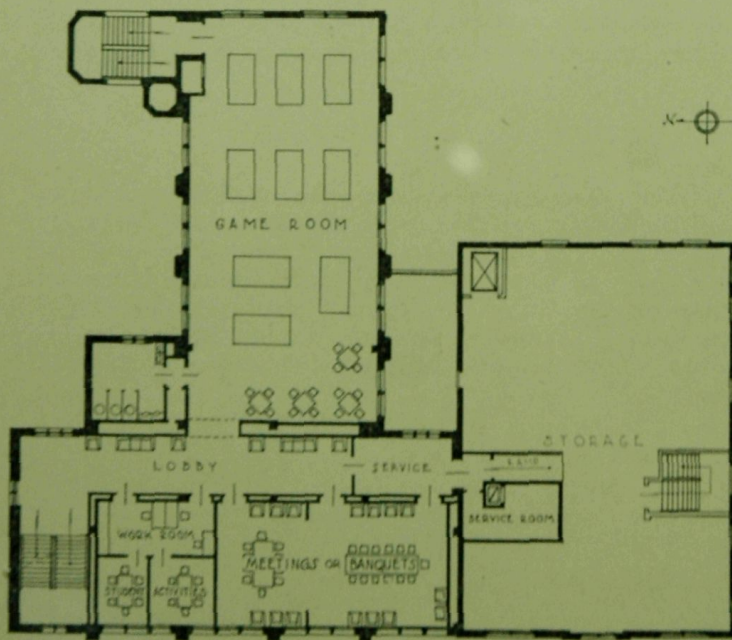


interior design and furnishings of the lounges provide an atmosphere of restfulness, conducive to relaxation. The music lounge, as the name implies, will be used not only as a lounge but as a place to listen to music. It is hoped that books and magazines will be provided so that this lounge may be used as a browsing room. Between the two main lounges is the checking room. The administrative office of the Union and information desk are just inside the main entrance.

Facilities for food service are located on the second floor. There are two types of service offered—cafeteria with a capacity for 180, and a table serv-



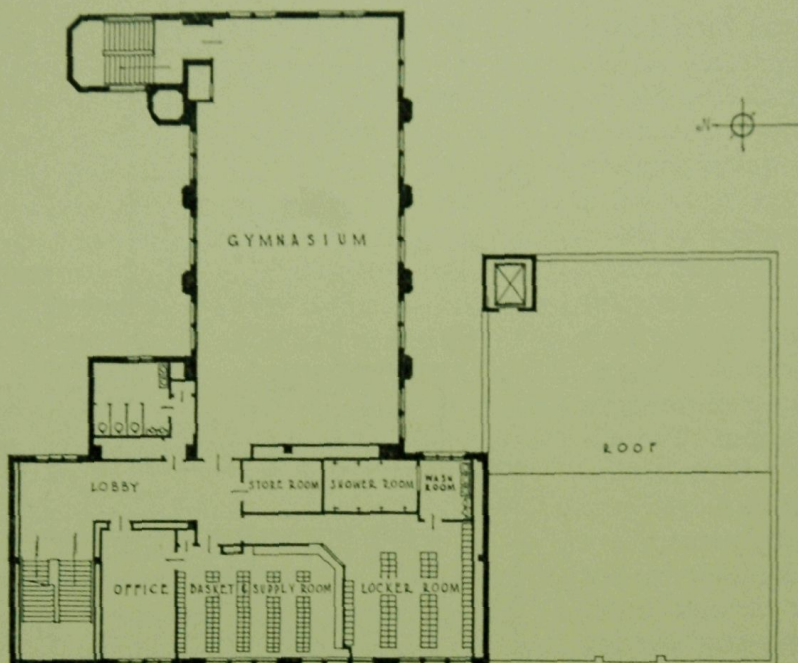
SECOND FLOOR PLAN



THIRD FLOOR PLAN

ice grill which will seat 90 people. A soda fountain at one end of the cafeteria will be in operation at all hours that the building is open. The office of the Food Service Manager is placed on this floor in the food preparation department.

The third floor houses a large game room in which ping pong tables, card tables, shoe quoits, shuffle board, and other similar types of equipment will be placed. The remainder of the space will be occupied by conference and committee meeting rooms which will include facilities for student activity work, and for filing records of various student organizations.



FOURTH FLOOR PLAN

A gymnasium comprises the major portion of fourth floor facilities. The office of the Recreational Director, and athletic equipment storeroom, a shower room and a combination game-equipment and basket locker checkroom fill the remaining area on this floor.

The Chicago Illini Union has an advisory board created by the Board of Trustees comprised of one member from the faculty of the Colleges of Dentistry, Medicine, and Pharmacy, a student representative from each of these colleges, one intern from Research Hospital and an alumni representative. This Board advises on management and operation and is responsible for formulating the general policies of the Union. Precedents set in similar student unions in other cities have been followed in most instances. Students, faculty, and alumni are urged to offer suggestions which they feel would improve the value and service of this Chicago Illini Union.

We wish to acknowledge the services of Mr. Ernest C. Von Ammon, Interior Decorator and Miss Mildred Bonnell, Advisor on Food Service