

C  
IL64Rsc

Illinois University.  
Student Council  
A Student Need

Lithomount  
Pamphlet  
Binders

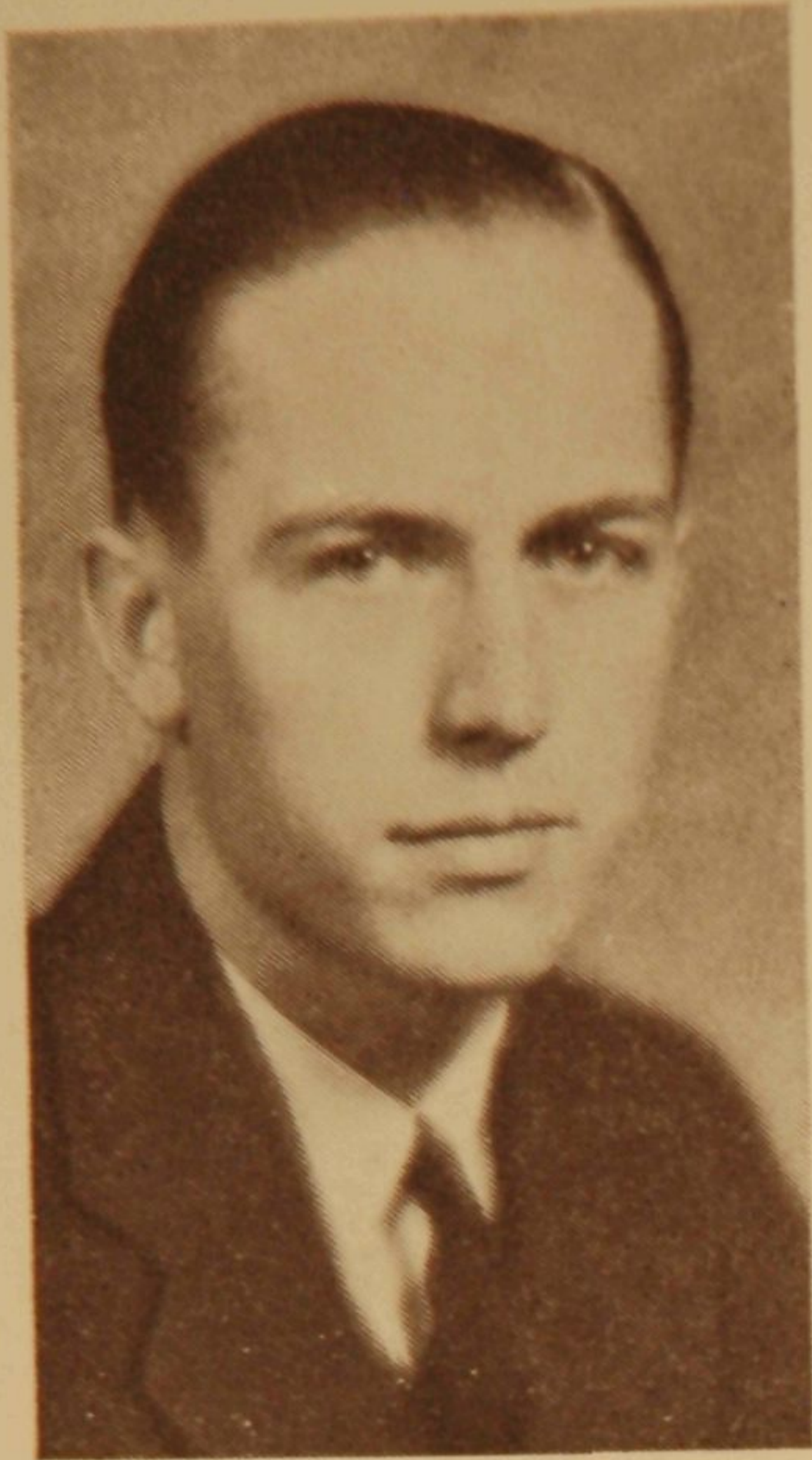
<sup>c</sup>  
Il6u Rsc

A  
STUDENT NEED  
*at the*  
University of Illinois

THE LIBRARY  
OF THE  
UNIVERSITY OF ILLINOIS

PUBLISHED BY  
THE STUDENT COUNCIL OF  
THE UNIVERSITY  
OF ILLINOIS

THE LIBRARY  
OF THE  
UNIVERSITY OF ILLINOIS



## THE STUDENT COUNCIL OFFICERS

V. L. KRETSCHMER, President (left)

EMILY JOHNSON, Vice-President (center)

J. R. ADAMS, Secretary (right)

J. R. ADAMS	Editor of <i>The Daily Illini</i>
P. C. BRINES	President, U. of I. Y.M.C.A.
R. H. CROWE	President of Class of 1932
BETTY DEBERARD	President, Woman's League
C. L. EMRICH	Editor of <i>Illio</i>
C. R. HARPER	Atheletic Council Representative
EMILY JOHNSON	President, U. of I. Y.W.C.A.
W. K. JORDAN	President, Interfraternity Council
V. L. KRETSCHMER	President of The Illinois Union
S. P. LANGHOFF	Student Colonel
LOUISAN MAMER	Woman's Editor of <i>The Daily Illini</i>
VIRGINIA MURTON	President, W.A.A.
L. A. PETERSON	Athletic Council Representative
L. K. MCNEAL	President of Class of 1931
R. C. RUGEN	Independent Council
MILDRED SHUMAN	President, Woman's Group System
R. E. SLOAN	Business Manager of <i>The Daily Illini</i>
T. W. SWAIN	Business Manager of <i>Illio</i>

Dr. H. W.  
President  
Urbana  
Dear Dr.  
For  
been com  
League  
We  
report  
We  
campus  
bamp  
of it  
ities  
activ  
a cent  
V  
of s  
offic  
spac  
tha  
f  
im  
as  
1

STUDENT COUNCIL  
UNIVERSITY OF ILLINOIS  
Urbana, Illinois

March 5, 1931.

Dr. H. W. Chase,  
President, University of Illinois,  
Urbana, Illinois.

*Dear Dr. Chase:*

For the past three months, the Student Council has been considering the work of the Illinois Union, Woman's League, and allied student activities.

We beg to submit for your approval the following report:

We feel that the Illinois Union has a place on the campus of the University of Illinois but that its work is hampered by the lack of necessary funds for the extension of it and by the lack of a suitable center for student activities. On the campus, there is no general center for student activities and we feel that the University should foster such a center either on the campus or on property adjoining it.

We propose that this general center include all forms of student activities with adequate places for meetings, office headquarters, general lounging facilities, and other space needed in a general student center. We also believe that there is a need on the campus for quarters for social functions but we do not feel that this question is of major importance at the present time.

The Student Council submits the following two plans as a temporary remedy for the situation:

1. We propose that the Woman's building, which will be vacated by the physical education department upon completion of the new Woman's Gym, be remodeled with adequate facilities for student activities, or
2. The present Union building be remodeled and kept up through an appropriation from the University. If this were accomplished, all commercial enterprises within

the building would be removed and the entire building would be used for only student activities. The annual appropriation for this would amount to approximately \$25,000.

In uniting all of the student activities under one head, we propose the following system of organization:

1. The student activities center would be directed by a board of directors composed of faculty men and women and students, in equal numbers and would be in charge of a business manager.
2. Each organization within the center would have its own board of directors or cabinet to direct its own activities.
3. Any campus organization desiring headquarters in the building would apply to the governing board of the center.
4. An activities counsellor or adviser, similar to the assistant dean of men in charge of activities, should have offices in the building. We feel that he should take the place of the assistant dean of men now acting in that capacity.

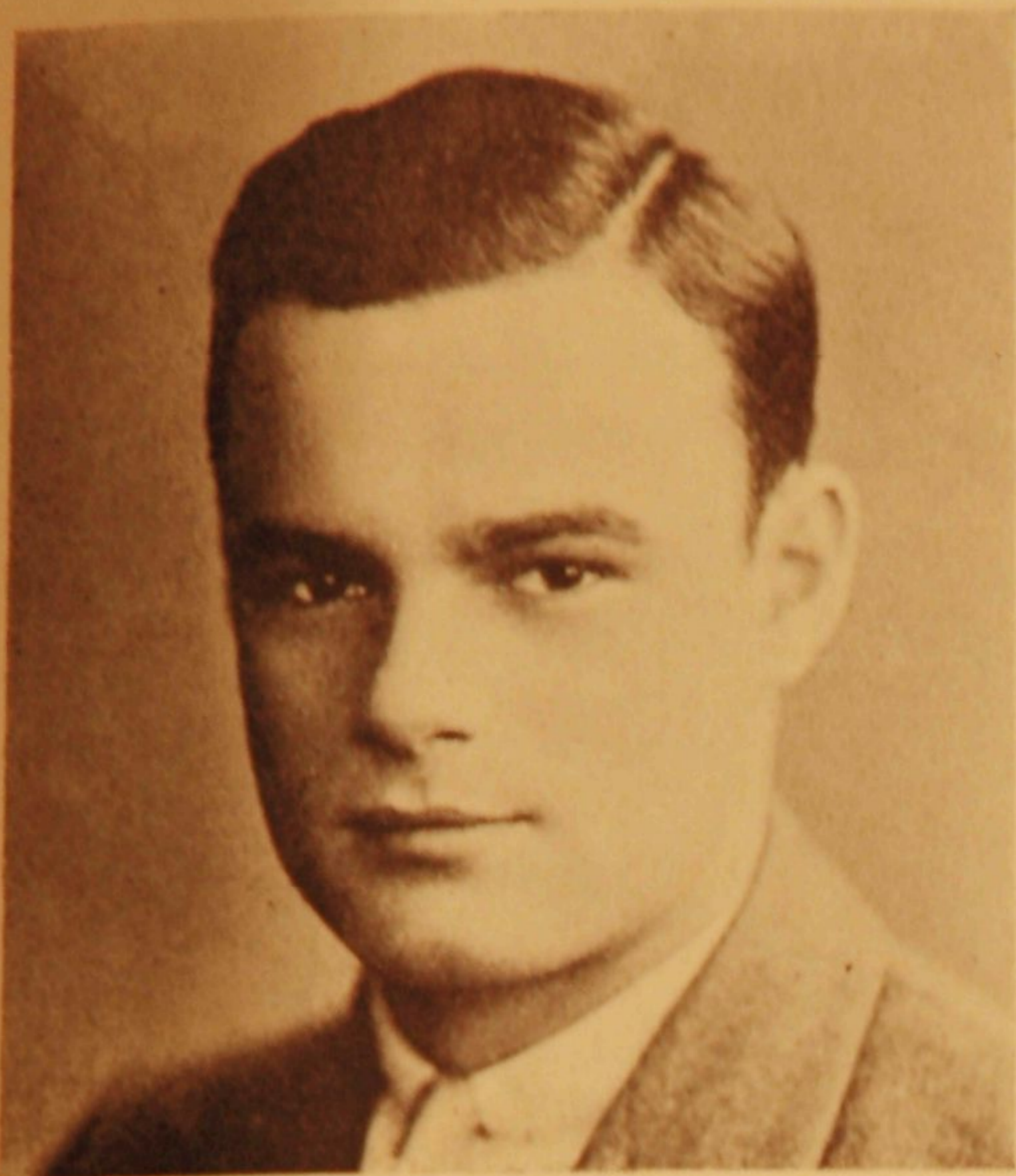
Under such a plan, offices could be maintained in the building by the publications, the Union, Woman's League, Woman's Group System, Star Course, athletic managers, athletic ticket office, Illini Theatre Guild, Interfraternity council, Pan-Hellenic council, and the Independent council, and meeting space would be available for all other activities.

We are submitting this report to you and hope that you will find it advisable to present it to the Board of Trustees within the very near future.

Cordially yours,

THE STUDENT COUNCIL,

V. L. KRETSCHMER, Pres. (signed)  
EMILY JOHNSON, Vice-Pres. (signed)  
J. R. ADAMS, Sec.-Treas. (signed)



W. K. JORDAN, President



M. O. GROSSMAN, Secretary

## THE INTERFRATERNITY COUNCIL

Resolution of the Interfraternity Council of the University of Illinois, unanimously adopted in meeting February 16, 1931.

WHEREAS, There is a generally recognized need at Illinois for a headquarters building for general student extra-curricular activities, and

WHEREAS, The Illinois Student Union, which has endeavored to fill this need, is unable because of inadequate quarters and because of insufficient stable income, to provide a center that is appropriate or which compares with similar buildings at other universities, and

WHEREAS, Many educational institutions of like character have recognized this need and have provided such a building on university property, and have further provided for its operation either by the assessment of a small fee from every undergraduate student or through its general appropriation, and

WHEREAS, The Student Council of the University of Illinois has recognized this need and have recommended to the proper university authorities that steps be taken to provide better accommodations for The Illinois Union, and that provision be made to operate these quarters in any manner the Board of Trustees see fit to outline, and

WHEREAS, The Interfraternity Council representing all the men's Greek letter fraternities at the University has acknowledged the necessity for improvement, and have appointed a committee to investigate existing conditions at Illinois and at similar universities, and

WHEREAS, This committee finds through its investigation that the need for a center of student activities is urgent, and is generally favored by a large majority of Illinois students,

BE IT THEREFORE RESOLVED, That the Interfraternity Council petition the President of the University and the Board of Trustees to investigate the facilities of The Illinois Union, and its income for operation and if this investigation finds need for improvement, that the Board of Trustees either assist The Illinois Union in remodeling its present quarters; or that the Board of Trustees provide a better building on the University campus, such as the Woman's Building soon to be largely vacated at the completion of the new Women's Gymnasium Building; and that the Board of Trustees provide for the maintenance of these quarters, either by the assessment of a small fee from each undergraduate student at the time of registration, or by providing the necessary amount of money from the general university appropriation, and

BE IT FURTHER RESOLVED, That the secretary of The Interfraternity Council be instructed to convey copies of this resolution to The Council of Administration, to the President of the University, and to the Board of Trustees of The University of Illinois.



## FACTS REGARDING STUDENT UNION BUILDINGS

In a recent survey made by the Directors of The Illinois Union, the following information was compiled regarding Student Union Buildings in the middle West, including the University of Michigan, University of Wisconsin, University of Minnesota, Ohio State University, University of Iowa, Purdue University, University of Kansas, University of Oklahoma, Iowa State College, and Michigan State College.

Of the sixteen large Universities having Student Union Buildings, ten were built as a result of student and alumni subscription campaign, two were provided by Universities, and four were provided by individual donors.

Eleven of the Universities hold title to the Student Union property. In five cases legal ownership is held by Student Union Corporations.

Four of the Universities operate the Student Union Buildings outright. The remaining twelve Universities delegate the operation to the Student Union Corporation.

In fifteen of the sixteen Universities queried, the land on which the Union Building was constructed was furnished by the University. In one case (Michigan) the land was purchased by the Union Corporation and later deeded to the University.

In all cases, therefore, the property occupied by the Union is legally owned by the University.

In all of the Universities interviewed, a fee is collected by the Bursar to provide for operation of the Student Union Building. The maximum fee collected is \$10.00 per year; the minimum \$3.00; average \$6.25. In fourteen of the institutions the fee is collected from both men and women. In the remaining two universities only men pay the fee.

Eight of the Universities collect and disburse the fees. The remaining eight turn the money over to the Union Corporation for disbursement. In practically every institution, provision is made for the refund of fee in cases where justified. These institutions report that there are very few applications for refund.

## DIRECTORS OF THE ILLINOIS UNION

### Officers

V. L. Kretschmer, '31, president  
W. E. Dillavou, '31, vice-president  
G. E. Springer, '31, secretary  
Prof. Lloyd Morey, treasurer

### College Representatives

G. E. Springer, '31, L.A.& S.  
R. J. Conover, '31, Commerce  
G. C. Stoltz, '31, Engineering  
E. G. Woods, '31, Agriculture  
S. G. Webb, '31, Education

### Faculty Representatives

Professor J. M. White  
Mr. Fred H. Turner  
Professor A. B. Mays

### Alumni Representatives

Mr. C. J. Roseberry  
Professor O. A. Leutwiler  
Mr. Carl Stephens  
Professor H. T. Scovill



THE MICHIGAN UNION

The University of Michigan Union, Ann Arbor. Funds raised by subscriptions of students and alumni. Total investment in building and furnishings \$1,278,235.00. Annual fee collected from each male student \$10.00; \$5.00 toward retirement of mortgage indebtedness and \$5.00 toward operation.



THE WISCONSIN UNION

The Wisconsin Union. A war memorial built by subscriptions from alumni, faculty and students. Total cost approximately \$1,250,000. A fee of \$10.00 per year is collected from every undergraduate student for maintenance and retirement of mortgage indebtedness.



## THE IOWA UNION

The Iowa Union Building. Investment to date \$461,000. Building is operated by the University. The State Board of Education employs a director who is responsible to the University.



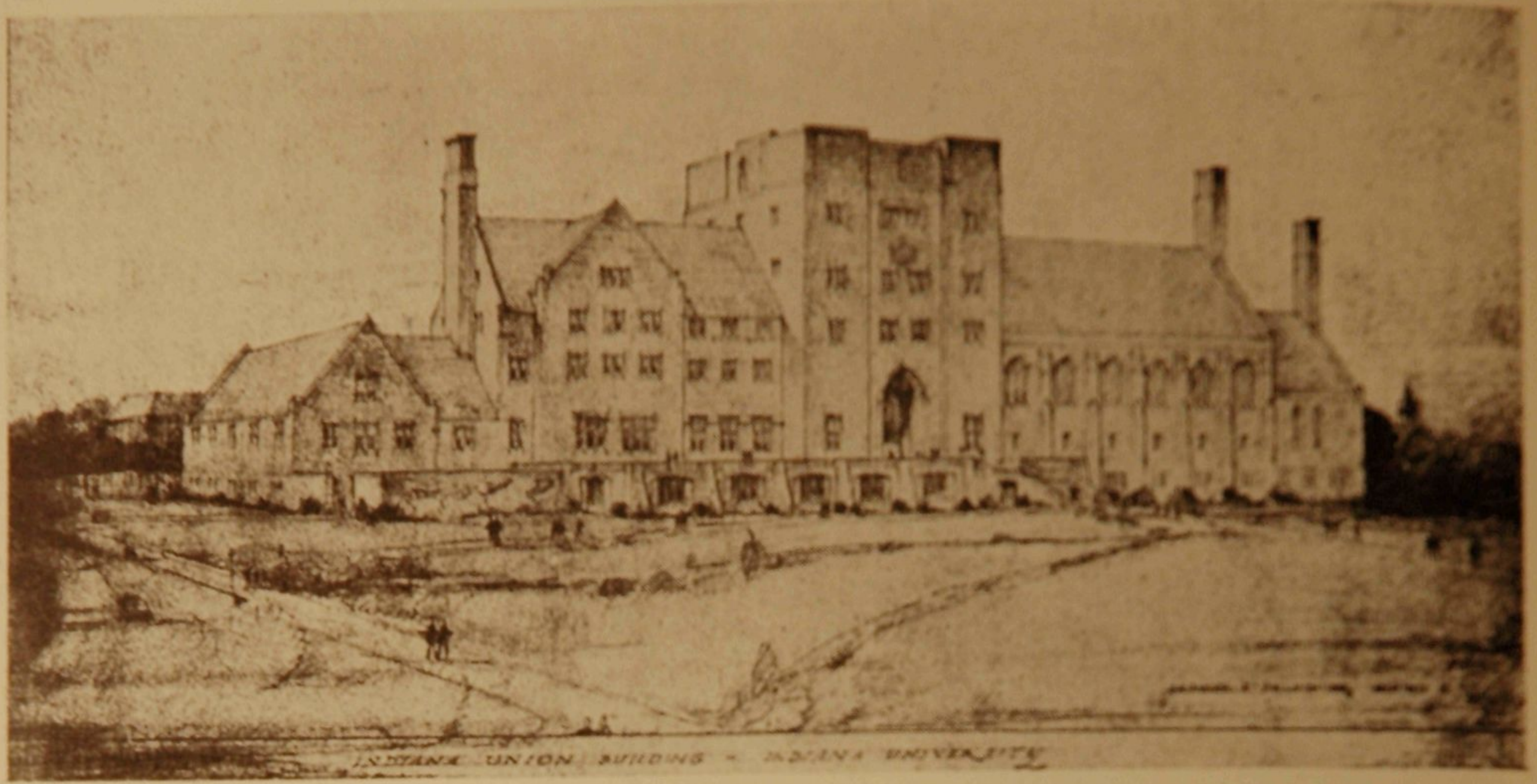
THE PURDUE MEMORIAL UNION

Purdue Memorial Union. A war memorial built by subscriptions. Total investment \$900,000. Annual student fee \$8.00 collected from both men and women undergraduates.



THE MINNESOTA UNION

The Minnesota Union, University of Minnesota, Minneapolis, Minnesota. This building, formerly a university building, was turned over to the Student Union which campaigned for funds to redecorate and refurnish the building as it is now being operated.



THE INDIANA UNION

The new Indiana Union Building now under actual construction. When completed total investment will approximate \$850,000. To maintain the building a fee of \$6.00 is to be charged each student.





THE OHIO UNION

Ohio Union constructed in 1908. State appropriation of \$75,000. The furniture secured through subscriptions of students and alumni. \$1.00 quarterly fee charged all male students.



THE IOWA STATE COLLEGE MEMORIAL UNION

Iowa State College Memorial Union. A war memorial, completed in 1928. Total investment, \$824,000. Building maintained by annual fee of \$6.00, collected from all undergraduate students.



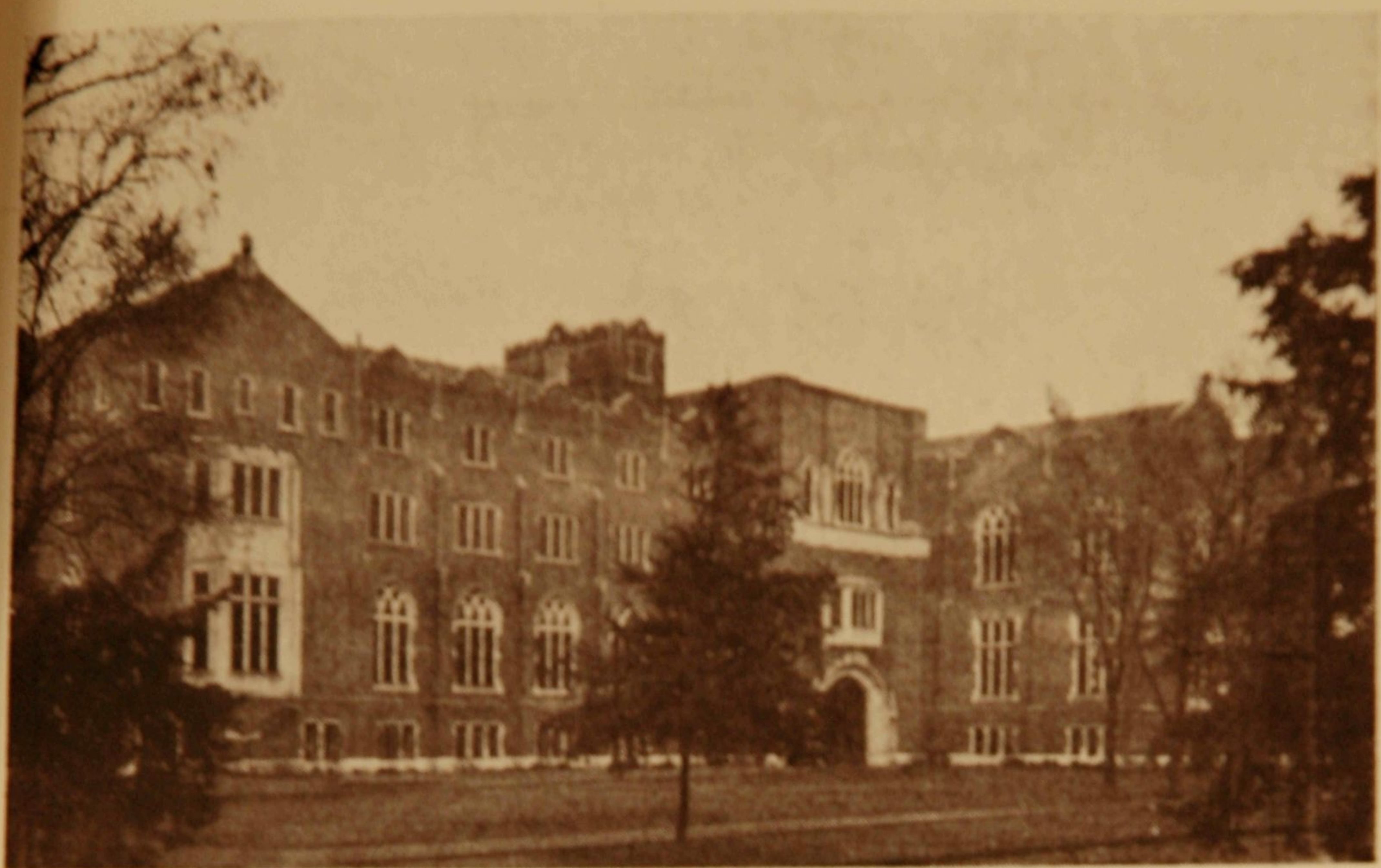
THE MICHIGAN STATE UNION

Michigan State Union. Completed in 1924. Money raised by pledges of alumni and students. Total investment \$430,000. Building operated by annual fee of \$4.50.



THE KANSAS UNION

The Kansas Union. A World war memorial begun in 1925. Total investment approximately \$250,000. Building operated by annual fee \$5.00, collected from both men and women.



THE OKLAHOMA UNION

The Oklahoma Union Building, University of Oklahoma, Norman, Oklahoma.



THE STEPHENS UNION BUILDING

Stephens Union Building, University of  
California.



A GROUP OF INTERIOR VIEWS

- Upper left: The Kansas Union
- Upper right: The Iowa Memorial Union
- Center left: The Purdue Memorial Union
- Center right: Wisconsin Memorial Union
- Lower left: The Michigan Union
- Lower right: Willard Straight Hall, Cornell University



### MISCELLANEOUS STUDENT UNION VIEWS

Upper left: Exterior view of Willard Straight Hall, Cornell University. Upper right: Interior view of Willard Straight Hall, Cornell University. Center left: Houston Hall, University of Pennsylvania. Center right: Interior view of Administration Building, Pennsylvania State College. Lower left: Exterior view of Administration Building, Pennsylvania State College. Lower right: The Vanderbilt Union, Vanderbilt University.



## THE ILLINOIS UNION

Throughout its entire history, The Illinois Union has attempted to provide a center for student activities at the University of Illinois.

The stated purpose of The Illinois Union is to promote Illinois spirit and loyalty by all possible means, and to foster all legitimate forms of student activities, especially by the maintenance of a social and recreational center for Illinois men and women.

The Illinois Union was organized in 1909 at the suggestion of Ex-President Edmund James. The growth of the organization and its activities has been steady during the 22 years of its existence, and has kept pace with the general growth of the University. On January 1st, 1919, the Union rented from the Y. M. C. A., the first floor of the Y. M. C. A. Building, at the corner of Wright and John Streets. Two years later in 1921, the Union took over on a rental basis, the entire Y. M. C. A. Building. In 1923 the Union entered into a contract with the Y. M. C. A. to purchase the building; the Union deeded to the Y. M. C. A. real estate in which the Union had invested its savings valued at \$30,000.00.

In 1927 the Union, in order to provide for further expansion, purchased the Bradley Arcade Building, which adjoins the Union Building site on the north.

The government of The Illinois Union is vested in a board of directors composed of the president, vice-president, treasurer, (who, with the consent of the president of the University, is the comptroller of the University); one officer of the Alumni Association, five student members of the Illinois Union, elected annually, one from each of the five major colleges; three members of the Alumni Association, and three members of the University of Illinois faculty. The three Alumni directors are appointed by the president of the Alumni Association. The three faculty directors are appointed by the Council of Administration.

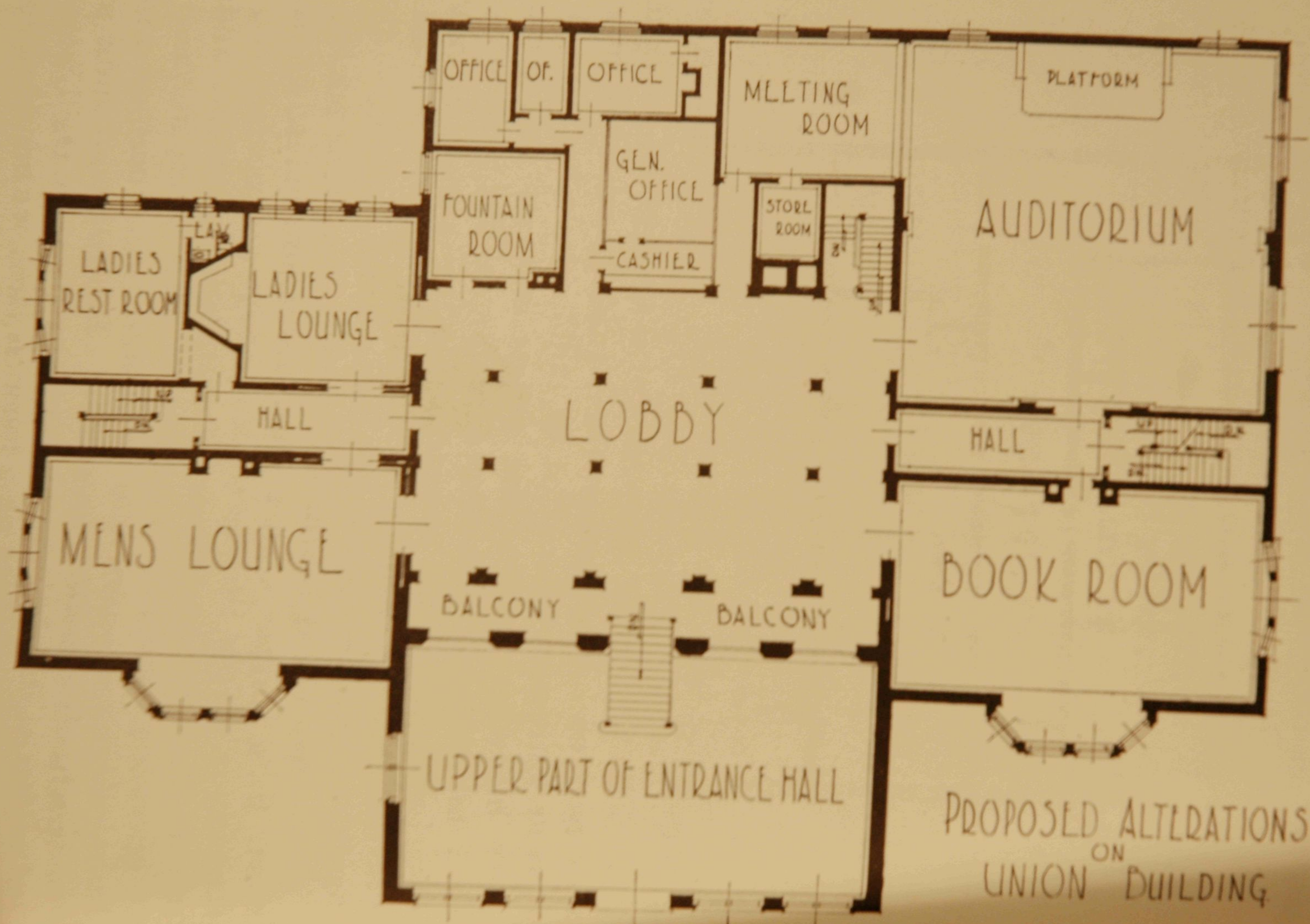


Why cannot The Illinois Union function as a student center in the same way similar organizations do at other universities? In the first place, our Student Union Building, at its best, does not compare with corresponding buildings at neighboring schools. These latter Student Buildings were secured for the most part from subscription campaigns such as the one waged for our Memorial Stadium. This was the source of funds for Union Buildings at Indiana University, Iowa State College, University of Iowa, Kansas State Teachers College, University of Kansas, Michigan State College, University of Michigan, University of Oklahoma, Purdue University, and the University of Wisconsin.

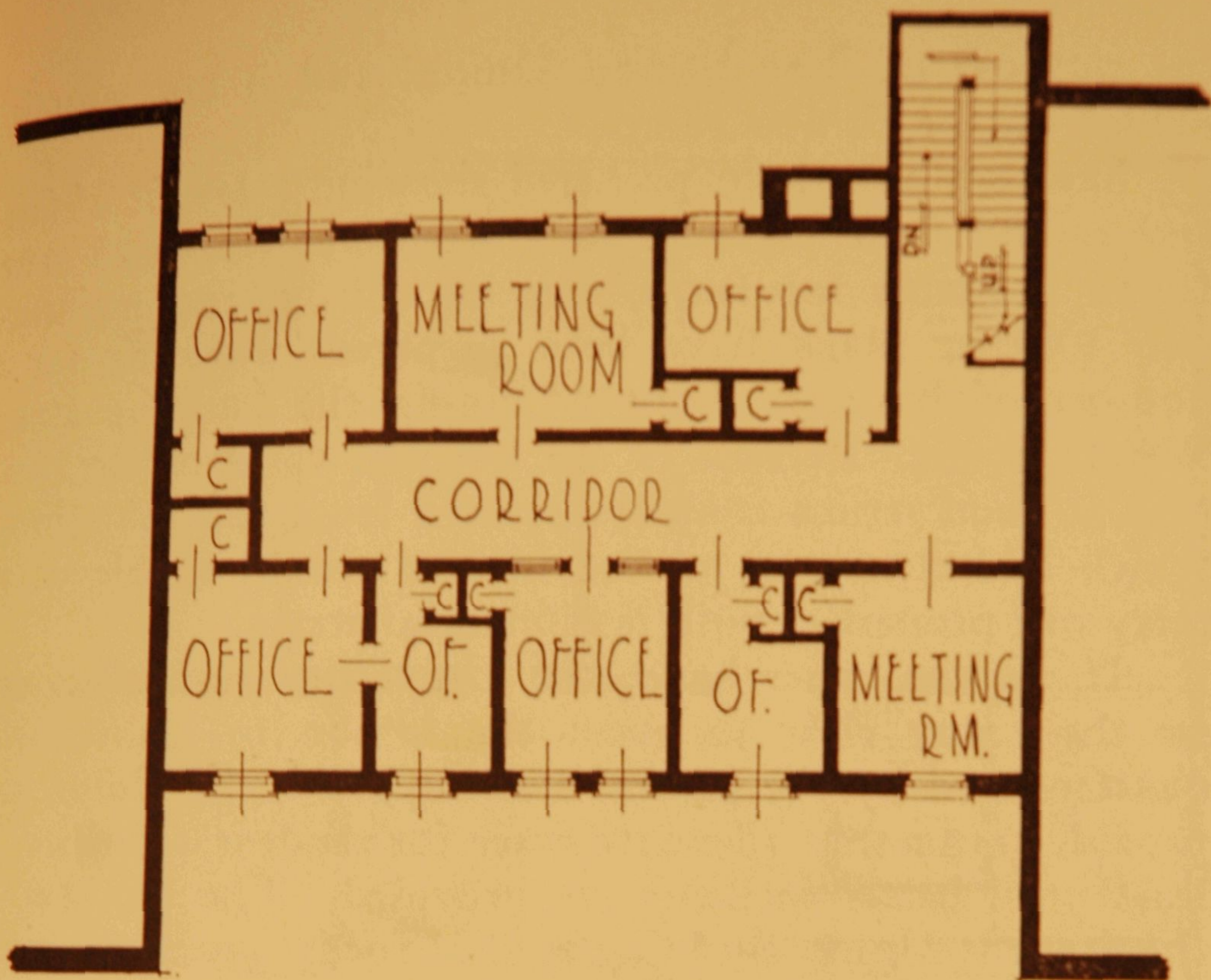
At a few schools private individuals have personally contributed the funds for student activity buildings, viz.: Brown University, Cornell University, University of Pennsylvania, and the University of Toronto. At two neighboring universities, the University of Minnesota, and Ohio State University, the universities themselves assigned university buildings already in existence for use as student activity buildings.

While it is true that our student building, at its best, does not compare with corresponding buildings at many other universities, it is also true that the quarters already provided by The Illinois Union, if properly maintained, would serve the present need, until a better building could be provided, either by the University, by state appropriation, by a subscription campaign, or by an individual donor.

In the cases cited above, after the student union buildings were provided, arrangements were made by the various college and universities to *maintain* the buildings. At some schools a small fee is assessed each student at the time of registration. At others the Union is maintained out of appropriations just as any other department of the University.



PROPOSED ALTERATIONS  
ON  
UNION BUILDING



At Illinois, on the other hand, the Student Union has never received a contribution from anyone, either for improvement or maintenance of its building. It has carried heavy mortgage indebtedness on its property, has paid heavy taxes and other operating expenses, just as a commercial concern would operate, but at the same time has been expected to furnish the student body (without charge) all the services furnished at other universities.

The result was inevitable. A point has been reached where The Illinois Union must discontinue most of its free service to the Illinois student body, and operate as a private business concern, or it must receive assistance and co-operation from the University in carrying out its functions, *which are generally recognized as a part of the machinery of a modern university.* The Illinois Union is not selfish in its motives. If forced by necessity the Union can operate its property on a business basis without loss to anyone, and with probable success. This, however, is not

the purpose of The Illinois Union, and is not what is needed on the Illinois campus.

Sketches have been prepared showing a layout of first and second floor plans as they would be employed were funds available for furnishing, decorating and maintenance. Other plans have been prepared providing for a number of business shops adjoining the building along Wright Street. Because of the business value of our location, a good return could be secured from this investment which added to our present income would enable us to carry our properties with less financial strain.

If, on the other hand, the University authorities can see their way clear to assist the Union in maintaining quarters used by the general student body, the Union can provide reasonably adequate space for student activities, at least until better facilities are provided. The location of the Student Union Building is ideal for its purpose, standing in almost the exact center of the student population.

Opinion has been voiced that the present Woman's Building, when largely replaced by the Women's New Gymnasium, could be converted into a serviceable headquarters for student activities including also headquarters for faculty and alumni. The Illinois Union would be glad to assist in any more ambitious program of this nature.

In conclusion, therefore, The Illinois Union, in collaboration with the Student Council, earnestly calls to the attention of the President and the Board of Trustees to the need at the University of Illinois for better facilities on the campus for social contact and social co-operation, for social experience and social expression now available to only a small percentage of the students who have created their own facilities.