



Entering the University of Illinois at Urbana Champaign

UNIVERSITY OF ILLINOIS

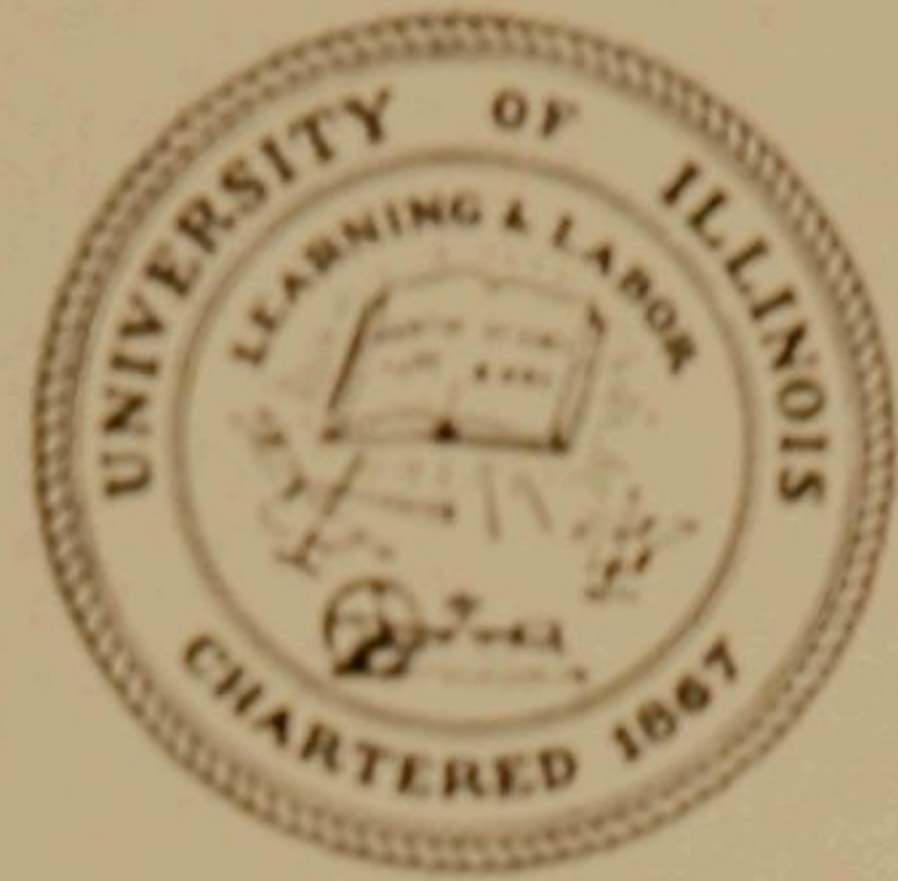
OCT 14 1969

LIBRARY

University of Illinois Bulletin. Volume 66, Number 107; April 25, 1969. Published twelve times each month by the University of Illinois. Entered as second-class matter December 11, 1912, at the post office at Urbana, Illinois, under the Act of August 24, 1912. Office of Publication, 114 Altgeld Hall, Urbana, Illinois 61801.

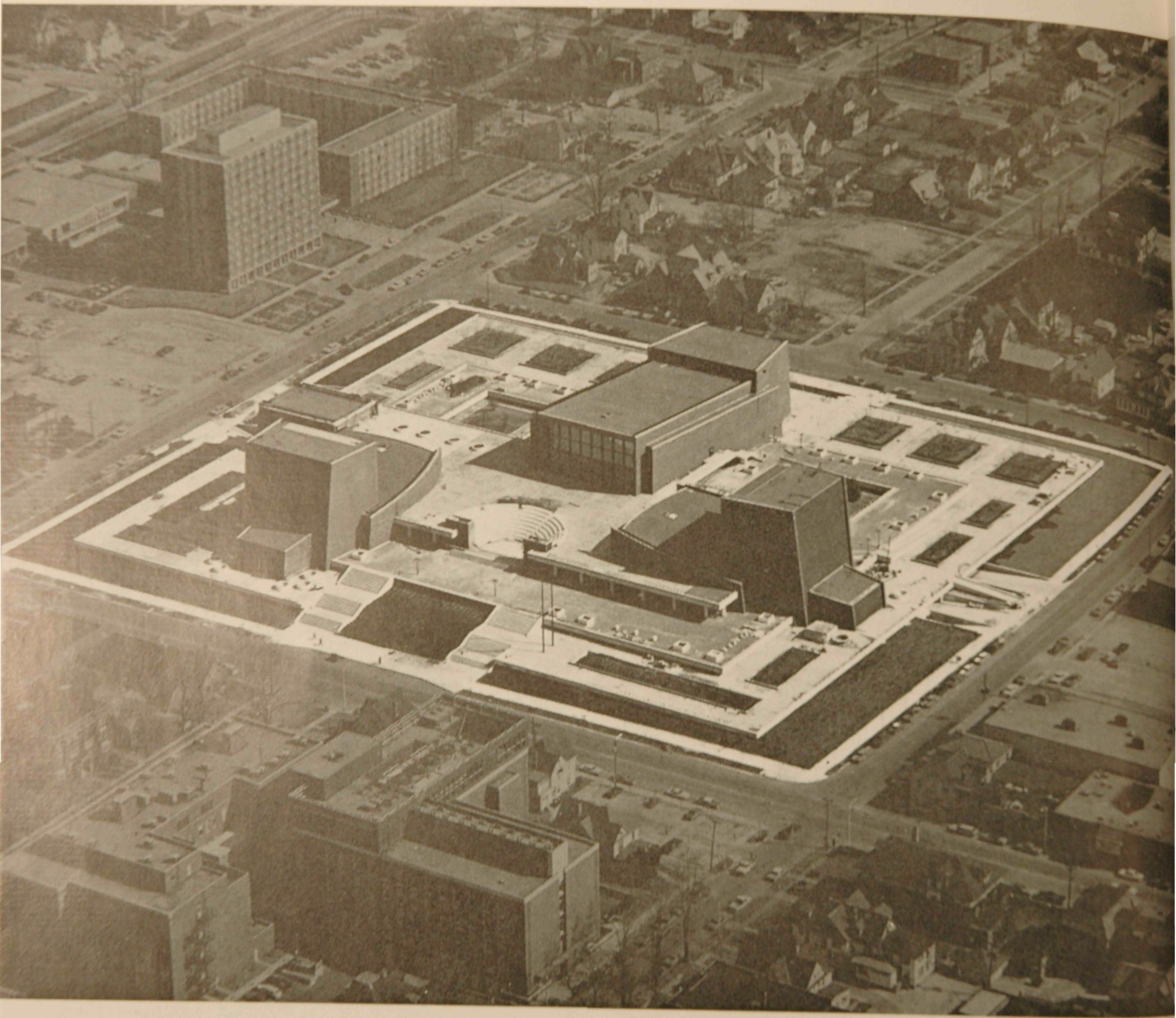
This publication has been prepared by the University Office of Public Information and the Urbana-Champaign Office of Admissions and Records. Copies may be obtained from the Office of Admissions and Records, 100a Administration Building, Urbana 61801.

It is the policy of the University of Illinois to afford equal educational opportunities to qualified persons regardless of race, religion, or ethnic background.



Entering
the University
of Illinois
at Urbana
Champaign

1969-1970



The Krannert Center for the Performing Arts.

C.
Ibbu Igui
1969/70

Cop. 2

Contents

YOUR STATE UNIVERSITY	5
ADMISSION TO THE UNIVERSITY OF ILLINOIS	6
Who May Attend the University	6
How to Choose a Course of Study	8
Fields of Study Open to Undergraduates at Urbana-Champaign	8
How to Apply for Admission	16
When to Apply for Admission	17
Health Examination	18
AFTER ADMISSION TO THE UNIVERSITY	19
NEW STUDENT PROGRAM	20
SPECIAL OPPORTUNITIES	22
Edmund J. James Scholars	22
National Advanced Placement Program	23
Special Early Admissions Program for High School Seniors	23
Early Admission Program in Music	24
Special Educational Opportunities Program	24
HOW MUCH WILL IT COST?	24
Fees and Expenses	24
Special Fees	25
Deposits	26
IF MONEY IS A PROBLEM	26
WHERE WILL YOU LIVE?	26
STUDENT SERVICES AND STUDENT ACTIVITIES	28
Activities for Fun and Self-Improvement	28
Where to Go for Advice	29
Library Facilities	31
Military Training	31
Health Services	31
MAJOR REGULATIONS APPLYING TO NEW STUDENTS	32
Physical Education	32
Automobiles, Motorcycles, and Bicycles	32
TO THE FUTURE STUDENT	32
Please Feel Free to Write	32
Come to Visit	33
Tour the Campus	33
ADMISSIONS CHART	34
REQUIREMENTS FOR ADMISSION	40
SPECIAL REQUIREMENTS FOR ADMISSION	42
Exemptions and Substitutions	42
Special Admissions	42

Your State University

A center of learning . . . a meeting ground for students of varied cultures, backgrounds, and ideologies . . . a focus for social and cultural activities . . . a major influence on the economic, intellectual, and cultural life of the state.

This is the University of Illinois, for over a century a leader among the nation's state universities.

The University was chartered in 1867 under the Morrill act, signed by Abraham Lincoln. It opened March 2, 1868. One of sixty-eight land-grant colleges in the United States, the University of Illinois today has more than 52,000 students and more than 7,000 full-time and part-time members of the teaching, administrative, and research faculty on its three campuses: the Chicago-based Medical Center; Chicago Circle, a commuter campus just west of Chicago's metropolitan area; and the 637-acre campus at Urbana-Champaign.

In aiming at its three-fold goal of teaching, research, and service, the University is more than a tri-campus institution — it is a statewide network of education, reaching into every county of Illinois. Service activities such as extension classes bring educational advantages to all parts of Illinois, and research by faculty members benefits all the people of the state, and the nation as well.

In fact, traceable results from faculty research repay every year to the people of Illinois more than the cost of building and operating the University since it opened in 1868.

Though size does not guarantee quality, the University's magnitude is important because it means that the University of Illinois has the facilities and personnel to offer a wide variety of educational, social, and cultural opportunities not available to smaller numbers. For example, its library collections, numbering more than 6,422,959 items on all campuses, is the largest of any state university, third among all American universities, and fifth among all the nation's libraries. Similarly outstanding are educational and research facilities in many other areas.

Yet, living units, and, where possible, classes are organized into small personalized groups so that the individual need not feel lost in numbers. These small units within the whole, like neighborhoods in a large city, allow each student to tailor his patterns of living to his own needs, abilities, interests, and tastes.

For all its scope and stature, the University of Illinois exists for one basic purpose: teaching students who come in search of knowledge. They come from every county in the state, every state in the nation, and over eighty foreign countries to Urbana-Champaign.

Admission to the University of Illinois

WHO MAY ATTEND THE UNIVERSITY

The University would like to admit any applicant who is sixteen or older and who has a proper foundation for his college work. Unfortunately, since the University's facilities are limited, priority must be given to the best qualified students who apply. In September, 1968, for example, 98 per cent of freshmen entering at the Urbana-Champaign campus were from the top half of their high school graduating classes; 83 per cent were from the top quarter. (Your rank in your high school class is based on high school work completed by the time you submit your application to the University.)

High school rank, however, is only one of three criteria which are combined to judge which students are the best qualified. In addition, all beginning freshman applicants must take the admission test prescribed by the University, and they must have had certain prerequisite high school subjects.

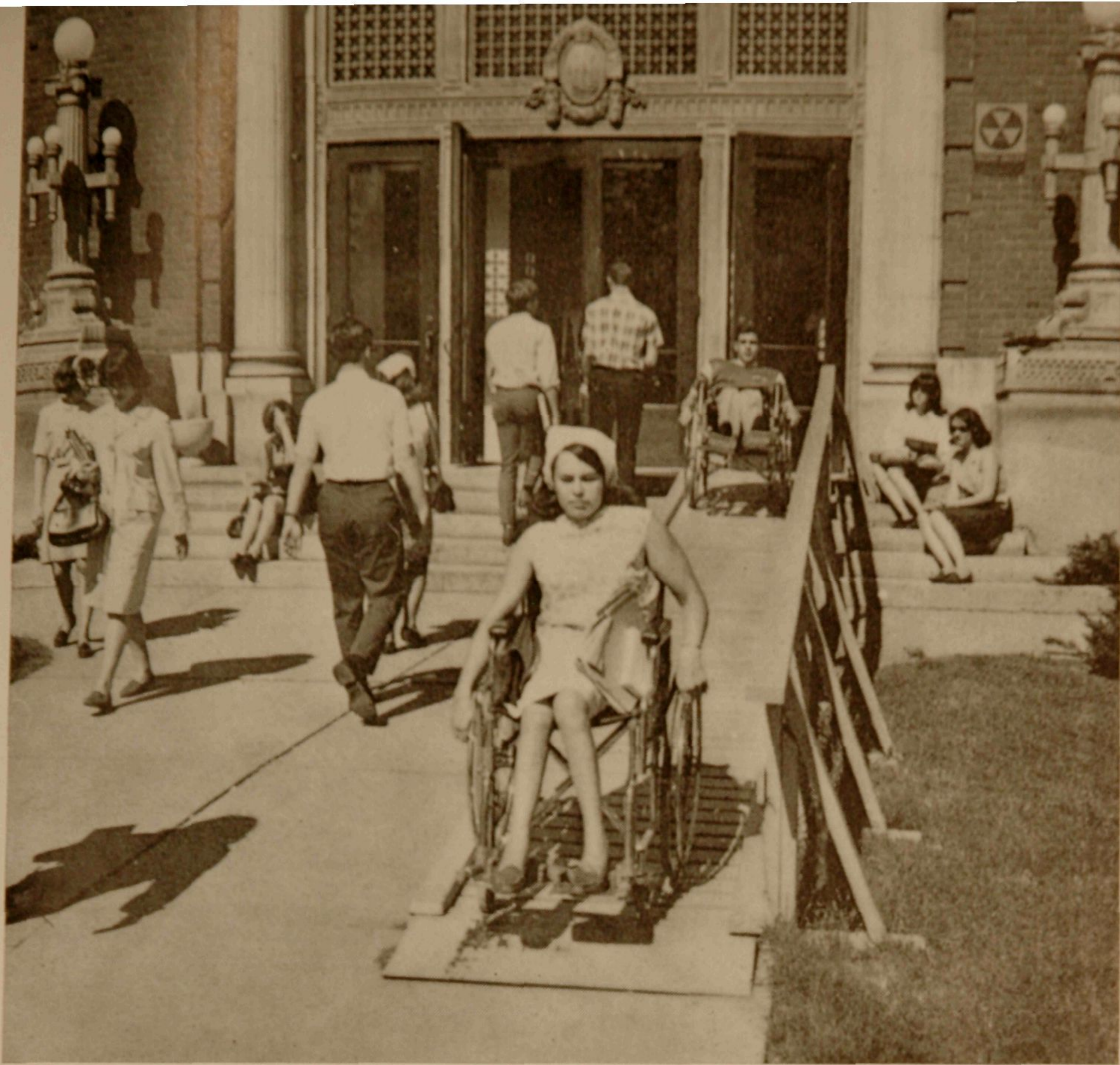
High school subjects required for admission vary with the curriculum chosen. For example, freshmen going into Engineering or Liberal Arts and Sciences' chemistry curriculum must have had more high school mathematics than those entering elementary education or music. Check the detailed table of entrance requirements beginning on page 34.

Quotas by level of instruction have been established in all colleges and curricula. For admission in September, 1970, freshman applicants who satisfy the high school subject pattern and the minimum combination of rank in class and test score required for their chosen curriculum will be approved for admission as long as spaces remain in that program. Prospective students should consult their high school counselors for current information on minimum required percentile rank and test score for each program.

Illinois residents who rank in the lower half of their high school classes but who are otherwise qualified may be admitted if they show ability to carry University work by doing exceptionally well on their admission tests.

Out-of-state residents who plan to enter the University as freshmen must rank at least in the top quarter of their high school classes.

Students transferring from other colleges or universities as undergraduates are considered on the basis of those applicants presenting a cumulative grade-point average which satisfies the minimum requirement for their chosen curriculum. Qualified applicants are approved as long as spaces remain. Unless a transfer applicant can not profitably pursue his



Auxiliary facilities serve disabled students.

area of academic interest at the institution he is now attending, usually he can not be admitted to the Urbana-Champaign campus until he has completed sixty semester hours. A pre-transfer grade-point average of 3.25 (on a 5 = "A" scale) is required in most colleges, although several colleges have established higher requirements for admission and continuation in certain curricula. An Illinois resident whose average is 3.0 or above, but below 3.25, may be admitted upon approval of his petition by the dean of the college he wishes to enter and by the Director of Admissions and Records. (Requirements for admission are explained more fully in the Undergraduate Study catalog.)

Prospective students with severe permanent physical handicaps will find special services available to them. The Division of Rehabilitation-Education Services has special facilities and services for such physically handicapped students as paraplegics, polios, triplegics, and spastics. The requirements for admission are the same as for general student enrollment, except that acceptance of physically handicapped students by the Office of Admissions and Records must be supported by joint approval of the University Health Service and the Division of Rehabilitation-Education Services. Such students should apply early, since facilities are limited. Preference is given to residents of Illinois, but qualified students from other states are considered.



Trustee Ralph Hahn participates in student convocation.

Institute of Aviation

These are two-year terminal curricula.

AIRCRAFT MAINTENANCE (including combined flight-maintenance programs)

AVIATION ELECTRONICS

PROFESSIONAL PILOT

Flight courses are open to students enrolled in other schools and colleges on a space-available basis.

College of Commerce and Business Administration

The first two years of work in all fields in the College of Commerce and Business Administration, except Teaching Economics and Business Subjects, are almost the same. Students later concentrate in one of the following major fields:

ACCOUNTANCY

ECONOMICS (several specialized sequences)

FINANCE (areas of specialization: finance, investment, and banking; insurance and risk management; and in urban land economics, including a residential development option)

INDUSTRIAL ADMINISTRATION (specialized sequences in production management and in personnel management and industrial relations)

MARKETING

TEACHING ECONOMICS AND BUSINESS SUBJECTS

(This curriculum is currently undergoing revision. Anyone interested in pursuing it should contact the Office of the Dean of the College of Commerce and Business Administration.)

College of Education

EARLY CHILDHOOD EDUCATION (preparation for teaching at the kindergarten and pre-kindergarten level)

ELEMENTARY SCHOOL TEACHING (general option and specialty for elementary school librarians)

TECHNICAL EDUCATION SPECIALTIES (preparation to teach a specialty at one or more school levels — elementary, secondary, technical institute, junior college, or industrial training program — with specialties in electronics, machine tools, avionics, machine tool drafting, architectural drafting, and construction, as well as industrial arts)

TEACHING DEAF AND HARD-OF-HEARING CHILDREN

TEACHING MENTALLY HANDICAPPED CHILDREN

College of Engineering

A common program is followed by freshmen in the College of Engineering so that a student may change from one to another of the following curricula at the end of the first year without loss of credit:

AERONAUTICAL AND ASTRONAUTICAL ENGINEERING

AGRICULTURAL ENGINEERING (options in electric power and processing, farm structures, power and machinery, and soil and water)

CERAMIC ENGINEERING

CIVIL ENGINEERING (areas of specialization: hydraulic and sanitary, structural, transportation, including highways, traffic, and railways, and photogrammetry and geodesy)

COMBINED FIVE-YEAR AGRICULTURAL ENGINEERING-AGRICULTURAL SCIENCE PROGRAM (freshmen enter the College of Agriculture)

COMBINED FIVE-YEAR ENGINEERING-LIBERAL ARTS AND SCIENCES PROGRAM (freshmen enter the College of Engineering)

ELECTRICAL ENGINEERING

ENGINEERING MECHANICS (for students interested in research and development in engineering)

ENGINEERING PHYSICS (including basic preparation for atomic and nuclear engineering)

GENERAL ENGINEERING (fields of concentration in engineering administration, engineering meteorology, engineering publications, engineering sales, and mining and geological engineering)

INDUSTRIAL ENGINEERING

MECHANICAL ENGINEERING

METALLURGICAL ENGINEERING

TEACHING OF ENGINEERING TECHNOLOGY (electronics and mechanical options)

College of Fine and Applied Arts

ARCHITECTURAL STUDIES

A new four-year program for freshmen beginning in September, 1969, and thereafter.

ART

Freshmen enter directly into the chosen curriculum, but the first year of each is basic and cultural; specialization begins in the second year in one of the following curricula:

Art Education (for prospective teachers)
Crafts (ceramic or metal emphasis)
Graphic Design
History of Art
Industrial Design (art or structural emphasis)
Medical Art (five-year program combined with College of Medicine; the first three years are given on the Urbana-Champaign campus)
Painting
Sculpture

DANCE (applied program for men and women)

LANDSCAPE ARCHITECTURE

MUSIC, WITH MAJORS IN:

History of Music
Instrumental Music
Music Composition
Voice

MUSIC EDUCATION (vocal-choral or instrumental emphasis) (for prospective teachers)

TEACHING OF DANCE

THEATRE

Theatre: Acting
Theatre: Directing and Playwriting Bases
Theatre: Technology and Design (costume and scenery options)

URBAN PLANNING

College of Liberal Arts and Sciences

CHEMICAL ENGINEERING (engineering and physical science options)

CHEMISTRY

COMBINED FIVE-YEAR ENGINEERING-LIBERAL ARTS AND SCIENCES PROGRAM (freshmen enter the College of Engineering)

GENERAL (two-year curriculum, emphasizing advising and counseling, for the student who chooses to defer selection of a major)

MEDICAL RECORD ADMINISTRATION

MEDICAL TECHNOLOGY

OCCUPATIONAL THERAPY

PHYSICS

PREDENTISTRY

PREPHARMACY

PREPROFESSIONAL NURSING

PREVETERINARY MEDICINE (also offered in the College of Agriculture)

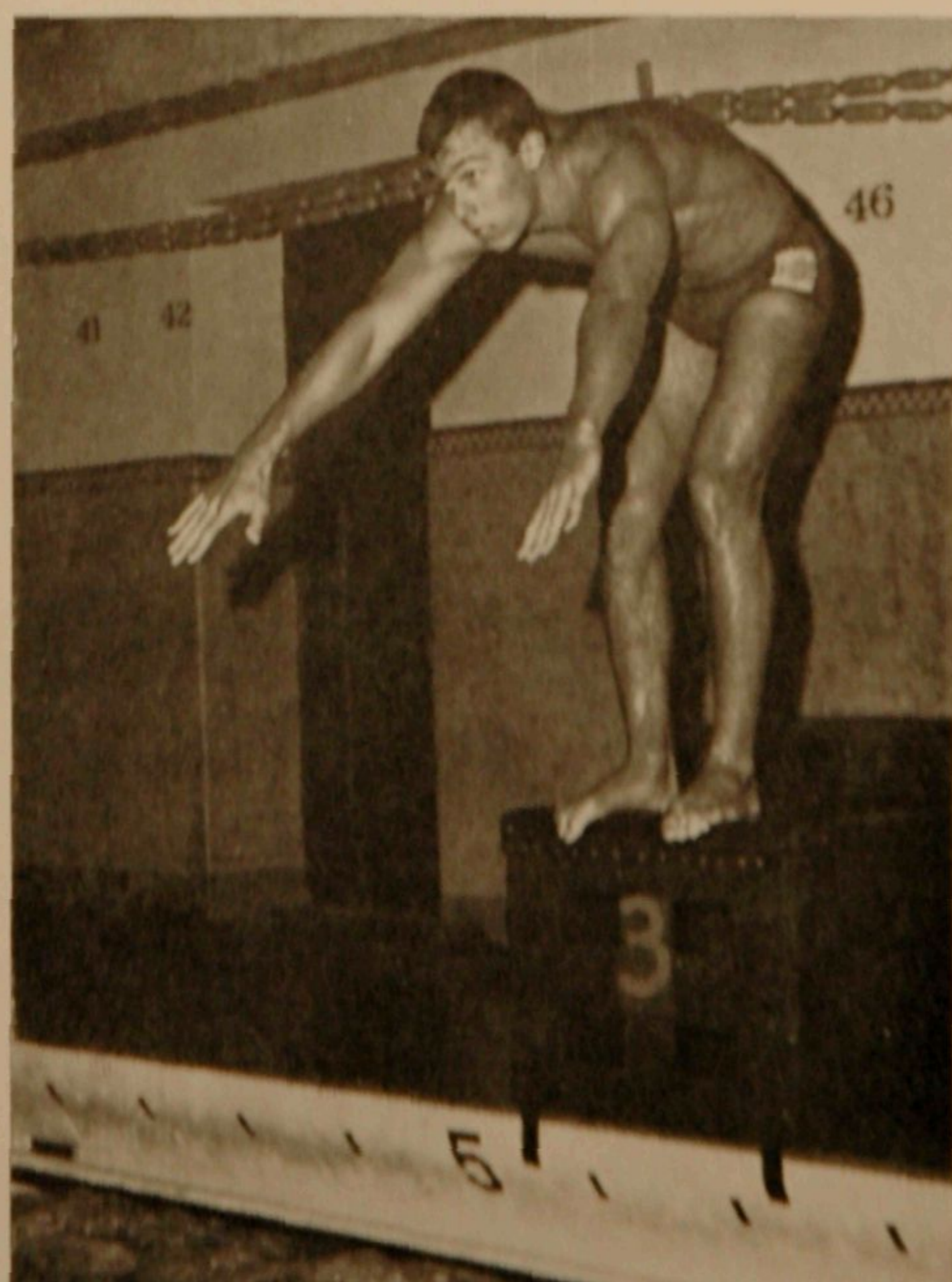
SCIENCES AND LETTERS (including preprofessional preparation for Communications, Law, and Medicine)

Students in this curriculum take two years of basic work followed by a major in one of the following subjects:

Actuarial Science (mathematics)
American Civilization
Anthropology
Astronomy
Biology (general and honors majors)

Botany
Chemistry
Economics
English
Entomology
Finance
French (literature or language and linguistics)
Geography
Geology
German
Greek
History
History of Art
Home Economics
Italian
Latin
Latin-American Studies
Mathematics
Mathematics and Computer Science
Medieval Civilization
Microbiology
Music
Philosophy
Physics
Physiology
Political Science
Portuguese Language and Literature
Psychology (general, applied, and graduate preparatory options)
Rhetoric and Composition
Russian
Russian Language and Area Studies
Sociology
Spanish

Instruction and competition are offered in many sports.





The foyer of the Education Building doubles as a lounge.

Speech (areas of emphasis: general speech, public address, interpretation, theatre, speech science and phonetics, speech correction and audiology)

Statistics (mathematics)

Zoology

SPEECH CORRECTION (teacher education)

TEACHER EDUCATION (secondary) (fields of biological sciences and general science, chemistry, earth science, English, geography, mathematics, physics, social studies, and speech)

TEACHER EDUCATION IN FOREIGN LANGUAGES (secondary and elementary) (French, German, Latin, Russian, Spanish)

College of Physical Education

HEALTH AND SAFETY EDUCATION (for men and women) (including options, selected in the junior and senior years, in school health education and school safety education (teacher education programs) and in community health education and public safety education)

PHYSICAL EDUCATION FOR MEN (options for the High School Certificate, grades six through twelve, for the Special Certificate, kindergarten through junior college, for the teacher education minor in coaching, and for the teacher education minor in physical education for men)

PHYSICAL EDUCATION FOR WOMEN (including general teacher education options for the High School Certificate, grades six through twelve, and for the Special Certificate, kindergarten through junior college)

RECREATION (including options in general recreation, park administration, outdoor recreation, and therapeutic recreation)

TEACHING OF DANCE

OPEN TO TRANSFER AND ADVANCED STUDENTS

Qualified transfer students may enter all the courses of study available to freshmen. They also may enter the following if they meet the requirements for advanced standing as given for each college.

College of Communications

Applicants must have fifty-six semester hours of undergraduate credit, exclusive of basic military and the required courses in physical education, and a minimum average of 3.5 (midway between "B" and "C") in all college work. No applicant whose grade-point average in all college work is less than 3.5 is admitted except on approval by the college of an individual petition for admission. Curricula are:

ADVERTISING

NEWS-EDITORIAL (areas of special interest: newspaper journalism, magazine journalism, radio-television journalism, and community journalism)

RADIO-TELEVISION (to prepare students for work in all except the technical phases of radio and television)

College of Education

The Curriculum Preparatory to High School Teaching requires junior standing and a minimum academic average of 3.5 (midway between "B" and "C"), or special approval. Applicants with averages below 3.5, but at least 3.3, may be considered for admission on an individual basis by petition. Students admitted on this basis are placed on academic probation during their first semester of attendance. (See admissions chart, pages 34 to 39, for complete requirements.)

College of Engineering

A thirty-two semester hour post-baccalaureate program designed to provide additional training and depth of subject matter is available to persons who are currently teaching in the area of engineering technology. The Certificate in the Teaching of Engineering Technology is awarded upon completion of the program.

College of Fine and Applied Arts

In addition to other curricula in this college, new transfer students may enter the curriculum in architecture (general and engineering options). This is a five-year program for students who began an architectural program before September, 1969.

College of Law

Applicants for entrance into the College of Law must have a bachelor's degree from an accredited four-year college or university, with a minimum grade average of 3.5 (midway between "B" and "C"). In addition, they must take the Law School Admission Test and furnish the score on that test to the college. Students with averages slightly below 3.5 may petition for admission if the petition is supported by high scores on the Law School Admission Test and other evidence of high aptitude for the study of law. The requirement of a prior degree may be waived in exceptional cases by special action of the Admissions Committee of the College of Law. Complete applications must be received in the college office not less than 120 days prior to the beginning of the term in

which admission is requested. New students are admitted only in September. The work in the College of Law requires three years, full time, to complete.

College of Veterinary Medicine

Applicants for entrance into the College of Veterinary Medicine must have at least sixty hours of acceptable college credit, exclusive of military and physical education, and a minimum average of 3.5 (midway between "B" and "C") in all college work. Preparation for entrance into this college must include certain required subjects. Candidates for admission may be required to appear for personal interviews and to present test scores. New students may enter this college only in September, and must apply by the preceding March 1.

TEACHER EDUCATION CURRICULA

Programs in teacher education for prospective teachers are administered in the College of Education and in the various colleges in which the major subjects are offered. For example, a student who plans to teach a language in elementary or secondary school, or a number of other secondary school subjects offered in the College of Liberal Arts and Sciences enters that college; a student who plans to teach agricultural occupations enrolls in the College of Agriculture; a student who plans to teach economics and business subjects registers in the College of Commerce and Business Administration; and the student who expects to teach art, dance, or music enrolls in the College of Fine and Applied Arts. Prospective athletic coaches and physical education teachers usually register in the College of Physical Education.

A student with sixty or more semester hours (inclusive of military and physical education) who wishes to enter a teacher education curriculum in any college must have an all-University grade-point average of at least 3.5. Students whose averages are below 3.5, but not less than 3.3, may be admitted on probation upon approval of a petition addressed to the Urbana Council on Teacher Education, 120 Education Building, Urbana, Illinois 61801.

Details concerning requirements in each of the above programs are given in the various college sections of the Undergraduate Study catalog.

NOTE

For additional information on University of Illinois requirements and programs of study, examine the Undergraduate Study catalog in your high school library.

HOW TO APPLY FOR ADMISSION

First, complete an application form. If you did not receive one with this publication, write to the Office of Admissions and Records. Ask your high school principal or counselor to send the completed application, together with a transcript of your high school credits, to the Director of Admissions and Records. If you wish to carry only a partial program of studies, you should indicate this intent at the time you apply for admission.

If you are planning to transfer from some other college or university, the Director of Admissions and Records at the University of Illinois will need the following records: (1) a transcript of your college work, includ-



Winter ice storm adds beauty to the Illini Union.

ing any in which you are currently enrolled, (2) a transcript of your high school work, and (3) the completed application form.

Records of service in the Armed Forces of the United States and records of correspondence or other study also should accompany the application.

Your social security number, which will serve during your student years as your permanent identification number, should be recorded on your application for admission. For beginning freshmen, the social security number should be recorded, too, on the American College Test (ACT) or Scholastic Aptitude Test (SAT) forms. If you do not have a social security number, you should obtain one from your local Social Security Office before applying for admission.

Admission Test scores (ACT or SAT) are required by the Office of Admissions and Records for every prospective freshman before he is considered for admission to the University. The test administered by the American College Testing Program (ACT) is prescribed. However, you may substitute the Scholastic Aptitude Test (SAT) scores for admission. Scores on either ACT or SAT must be sent to the University on an official score report by the testing agency. All freshman applicants are encouraged to complete the ACT or SAT in the spring of the junior year in high school and submit their applications as soon as possible after September 25. Be sure your social security number is recorded in the appropriate space on the test form.

WHEN TO APPLY FOR ADMISSION

You should apply for admission as early as possible within the time limits set by the University.

If you are a new student applying for admission as a beginning freshman, you may apply on the basis of six semesters of completed high school work. If you are a transfer student or former student seeking readmission and currently attending another institution, you may apply as early as the beginning of the final term preceding the one you wish to enter.

Applications may be submitted *on or after* the following dates, but not before.

September 25For admission of all students in the following spring semester.

September 25For admission of beginning freshmen in the following fall semester, including those who wish to enter in the summer session and continue in the fall.

March 1For admission of all students in the following summer session who do not intend to continue in the fall.

March 1For admission of new transfers and readmission of all former students in the following fall semester.

Applications for fall semesters must be received by the University no later than two weeks before the first day of the fall registration period which the student plans to enter.

Physically handicapped students, transfer students to the College of Veterinary Medicine, and students in the combined Engineering-Liberal Arts and Sciences five-year program should check special deadlines for these areas in the Undergraduate Study catalog.

Because available academic facilities are inadequate to provide admission spaces for all qualified applicants to the undergraduate colleges and institutes at the Urbana-Champaign campus, quotas have been established for admission to the various curricula by levels of instruction.

Beginning Freshmen

Since admission of all beginning freshmen is determined on the basis of high school percentile rank combined with the test score, plus academic subjects prescribed for the curriculum the student wishes to enter, evidence to satisfy all three criteria must be received by the Office of Admissions and Records before an application is considered complete. Prospective students should consult their high school counselors for current information on the minimum required percentile rank and test score for each program. For the academic subjects prescribed for the curriculum of your choice, see pages 34 to 39.

Transfer Students

In most cases, transfer students with fewer than sixty semester hours will not be admitted. For additional information, see page 6.

HEALTH EXAMINATION

All new students, both freshmen and transfers, must present adequate

evidence of satisfactory physical and mental health. You are expected to comply with this requirement prior to completion of your first registration in the University. Detailed information concerning the required examination is included in the New Student Program which will be sent to you after your application has been approved and your advance deposit on tuition and fees has been received. Students transferring from other campuses of the University must request transfer of their physical examination records to the University Health Service, Urbana-Champaign campus.

After Admission to the University

The University offers Pre-College Programs to make entering the University easier for high school seniors and others planning to enroll at the Urbana-Champaign campus in September.

FRESHMEN

A special brochure, *Pre-College Programs for Entering Freshmen*, is sent to you with your notice of eligibility for admission and contains a form for you to use if you wish to take part in any or all parts of the program.

Arrangements include:

1. *Freshman Guidance Examinations and Placement Tests.* These required tests are offered at various locations throughout the state during the spring and summer. For those unable to complete them on one of the scheduled dates, they will be repeated during the New Student Program prior to fall registration.

These tests include Freshman Guidance Examinations in addition to

Mothers Association "survival kits" brighten Exam Week.



proficiency and/or placement tests in biology, chemistry, rhetoric, foreign languages, and mathematics.

2. *Individual Pre-College Counseling.* Available on the Urbana-Champaign campus in the spring and summer. It is open by appointment to prospective freshmen who have completed their advance testing.

3. *Advance Enrollment.* During June and July, you may come to the campus, consult an academic adviser, select the courses you will take, and arrange your class schedule. Only those prospective freshmen who have completed their required tests and have paid their advance deposit on tuition and fees are eligible for advance enrollment. An advance appointment is necessary.

4. *Parents Program.* During the summer advance enrollment period, parents are provided with special opportunities to learn about the University and to tour the campus. This program is co-sponsored by the University, the Dads Association, and the Mothers Association.

If you take advantage of opportunities provided for early testing, counseling, and advance enrollment, you will be assured of your schedule of courses before you come to the campus in the fall, and you will be free of many of the pressures which are inevitable during the fall registration period. You may also be granted college credit on the basis of successful performance on the proficiency examinations.

TRANSFER AND READMITTED STUDENTS

Transfer students and readmitted students receive a special brochure, *Pre-College Programs for Transfer and Readmitted Students*, and are offered the opportunity to advance enroll during the summer for the fall semester. Specific information about this program will be sent to you along with your notice of eligibility for admission. New transfer students may obtain a ticket of admission to the placement and proficiency testing sessions which apply to them by completing and returning to the Office of Admissions and Records the request form enclosed in the brochure. The results of the tests are used in connection with academic advising and assignment to courses. Advance enrollees are relieved of required participation in some of the New Student Week events, and may be granted proficiency credit.

New Student Program

Freshmen and other undergraduates entering the University of Illinois in September or February take part in the New Student Program — an

introduction to college study, student life, and the campus community, during the week immediately preceding the opening of classes.

Some New Student Program events, such as orientation meetings, tests and examinations, college conferences, and registration, are required and are planned to help you enter your academic program as easily and efficiently as possible.

Others introduce you to campus life. Many student and University groups, as well as religious foundations, sponsor social events to welcome new students. These organizations give you a chance to learn about their services and facilities, and introduce you to other new students.

An official program of events and other information for new students will be mailed to you prior to registration for the semester to which you are admitted.

If you have questions about planning your class program, making new friends, or learning locations of classroom buildings, remember that most other new students have similar problems. You'll find the answers during the Pre-College Programs and the New Student Program. That's what they are for — to answer your questions and to help you get off to a good start.

The University ranks high nationally in instruction and research.



Special Opportunities

Students who have outstanding academic records in high school will find special academic opportunities awaiting them at the University of Illinois. Various honors programs are carried on by the colleges and departments throughout the University. Four of the newer programs, all open to qualified new students, are noted in the following paragraphs. You will learn about the others from your faculty advisers as you become eligible for them during your college years.

Applicants who are eligible for the honors programs may be eligible for scholarships, grants, or other awards.

EDMUND J. JAMES SCHOLARS

Seniors in Illinois high schools are eligible to be considered for inclusion in the James Scholars Program if they rank high in their classes. Applications are also considered from outstanding high school seniors in other states. Selection is based on high school grades, college aptitude, achievement, and other test scores, and recommendations of high school faculty members.

James Scholars are given University recognition during all four years of undergraduate study and are encouraged to enroll in enriched programs fitted to their individual needs. James Scholars may enroll in honors courses and honors seminars organized to meet and to stimulate their academic talents; they are given individual faculty honors advisers who are prepared to guide them toward advanced study. In the junior and senior

The campus is a community of over 40,000 within the twin cities.



years, James Scholars may undertake independent study or research projects in preparation for the baccalaureate degree with honors.

NATIONAL ADVANCED PLACEMENT PROGRAM

The University of Illinois is cooperating in the Advanced Placement Program administered nationally by the College Entrance Examination Board. This program is designed for the abler high school student who wants to get a "head start" on his college work. You may be able to take college-level work in selected subjects during your senior year. Satisfactory work in these courses, as demonstrated by a grade earned in a standard national test, entitles you to college credit and admits you to advanced courses (in most departments) when you enter the University as a freshman. Your high school principal or counselor can tell you about this program. (More details appear in the Undergraduate Study catalog.)

SPECIAL EARLY ADMISSIONS PROGRAM FOR HIGH SCHOOL SENIORS

If you are academically talented, and have made high grades in high school, you may apply for permission to enroll in the University as a high school senior. This means that upon recommendation by your high school principal and after acceptance by the University of Illinois, you may be allowed to enroll in college courses at the end of your third high school year and during your senior year in high school.

Specifically, you may (1) enroll in correspondence courses or extramural classes conducted by the University of Illinois Division of University Extension in or near your home community; (2) attend the Uni-



versity during the summer session; (3) commute to the campus for course work during your senior high school year. Information can be obtained from the Office of Admissions and Records.

EARLY ADMISSION PROGRAM IN MUSIC

A limited number of selected pupils with outstanding musical talent are allowed to begin University level work in the School of Music during the summer following their junior year in high school. For information, write to the Director of the School of Music, 100 Smith Music Hall, Urbana, Illinois 61801.

SPECIAL EDUCATIONAL OPPORTUNITIES PROGRAM

The University has developed a Special Educational Opportunities Program for those students who might not otherwise be able to enter and to continue their education at the college level, and who need special services to realize their full potentialities. Removing the financial, academic, and social impediments to the success of these students constitutes a growing part of the University's role. Applicants who want more information should write to the Office of Admissions and Records, 100a Administration Building, Urbana, Illinois 61801.

How Much Will It Cost?

FEES AND EXPENSES (Subject to change)

Estimated expenses for unmarried undergraduate students attending the University of Illinois at Urbana-Champaign, exclusive of such variable items as major articles of clothing, household expenses, and recreation, are given in the budget below. This budget covers two semesters for students who are residents of Illinois.

	<i>Moderate</i>
Tuition (residents of Illinois)	\$ 246.00
Required fees	116.00
Textbooks and other school supplies.....	130.00
Double room and board (residence hall rate for nine months).....	935.00
Miscellaneous (including local transportation, personal and miscellaneous expenses, and provision for Sunday evening meals which are not included in University residence hall charges).....	493.00
Travel allowance (to and from home).....	40.00
<i>Total, Two Semesters.....</i>	<u>\$1,960.00</u>

For those who are not residents of Illinois, the tuition is \$852.00. Required fees are the same for resident and nonresident students.

In certain fields such as art, architecture, and engineering, costs of textbooks and other school supplies run somewhat higher. The room and

board cost could be reduced somewhat by arranging for a triple instead of a double room, or by living in cooperative housing. The *miscellaneous* item could be reduced by careful attention to personal spending.

In addition to the annual expenses listed on the preceding page, applicants for admission or readmission in September, 1970, and thereafter, must submit with their applications a nonrefundable application fee of \$15.00.

Tuition and fees are payable in full when the student registers, unless the installment plan is elected. Anyone wishing information about costs for partial programs of study, under which they would carry less than the usual class load, should write to the Director of Admissions and Records. Registration in less than a full program of studies requires approval by the dean of the student's college.

Students will find it hard to earn all their expenses during the school year, and should have cash reserves or other aid of at least \$500.00 a year, even if they plan to work their way through the University.

SPECIAL FEES

Flight-Training Fee. Students taking flight training pay a materials and supply fee of \$475.00 for each flight-training course in addition to the regular tuition and fees. This fee is not covered by scholarships.

Installment Fee. Students electing the installment plan for payment of tuition and fees must pay a service charge of \$2.00. An additional service charged of \$2.00 is assessed if the flight-training fee is paid on the installment plan. There is no service charge for the payment of University housing accounts on the installment basis. Arrangements for installment payment are made at the time the student registers.

A complete list of special fees is given in the Undergraduate Study catalog.

Students gather in Illinois Street Residence Hall dining room.



charged of \$2.00 is assessed if the night-training fee is paid on the installment plan. There is no service charge for the payment of University housing accounts on the installment basis. Arrangements for installment payment are made at the time the student registers.

A complete list of special fees is given in the Undergraduate Study catalog.

Students gather in Illinois Street Residence Hall dining room.



DEPOSITS

Each eligible new and readmitted student (except foreign students who, at the time of application, are residing outside the United States and certain others specifically exempted) who wishes to register for a fall or spring semester in the University at the Urbana-Champaign campus is required to make an advance tuition and fee deposit of \$30.00 to confirm his intent to register and reserve his place. This deposit is applied toward each student's tuition and fees in the semester for which he is admitted. In case the student fails to enter the University in that semester, the deposit may not be applied toward any future registration. The deposit is nonrefundable except in very special cases and should not be sent until requested by the University. It is refunded after registration to students holding scholarships covering *both* tuition and fees.

If Money Is a Problem

The University of Illinois offers seven kinds of help to students with financial problems: scholarships; grants-in-aid, including federal educational opportunity grants; student loans; part-time jobs, including the Federal Work-Study Program; combination work-scholarship awards; moderately priced and cooperative housing; and an installment plan for paying tuition and fees. Specific information concerning available financial aids will be sent to all students who check Item 15 on the application for admission.

Where Will You Live?

In his "home away from home," the University of Illinois student makes many friendships which make college years happy and meaningful and which provide him with life-long associations of great profit and enjoyment.

University residence halls, privately owned halls and rooming houses, and fraternities and sororities provide varied types of living accommodations. As you choose where you make your home on campus, keep one rule in mind, however: all unmarried undergraduate students who were born after September 1, 1948 — both men and women — must live for the entire academic year in quarters which meet standards established by the University.

You will be wise to begin making your housing arrangements early. At the time the Office of Admissions and Records receives your application for admission to the University, you are sent a copy of the brochure,



The Jazz Band sound thrills crowds on campus — and on tour.

Student Housing at the University of Illinois, explaining in detail the various types of housing available and the general regulations which govern student housing.

An application for the University residence halls is sent to you automatically after you have received your notice of eligibility for admission to the University and have paid the \$30.00 advance deposit on tuition and fees. If you wish to apply for accommodations in the University residence halls, the application form should be returned promptly. You are then mailed a housing contract which must be signed and returned to the University together with an advance payment of \$40.00 for the year. One-half of the housing deposit is applied on your first semester's rent and the other half on the second semester's rent. This payment is \$20.00 if you enter in the spring or summer terms.

If you prefer living quarters in private residence halls or privately operated student rooming houses, the Housing Division recommends that you visit various houses and make in person all arrangements with the operator or house director in charge. It is wise to stop at the Housing Division for information about current vacancies before calling at the various units; contractual agreements often are supplied and enforced by the Housing Division. Many of the operators of privately operated residence halls and rooming houses require a permit to enter the University before they issue a contract for a room.

Do not sign a contract until you have read it in detail. Discuss any questions you may have with the Housing Division staff *before* the contract is signed.

Local students whose families live in Urbana-Champaign are, of course, allowed to live at home with their parents. However, out-of-town students born after September 1, 1948, who want to live with close relatives in Urbana-Champaign or who plan to hold room and board jobs must obtain permission in advance from the Dean of Student Personnel.



Illinettes give a Homecoming badge to the Queen.

Student Services and Student Activities

Some of the questions of freshman or transfer students about counseling, housing, employment, loans, or recreation are answered in the following paragraphs.

ACTIVITIES FOR FUN AND SELF-IMPROVEMENT

Activities. As a student, you may participate in a variety of out-of-class activities — sports, music, publications, dramatics and debate, student government, civic service, hobby groups, clubs based on professional or academic interests. Although the University is non-sectarian, religious foundations have grown up around the campus; they will invite you to take part in their various programs. Lectures by famous scholars and world figures, and music and art at their best nourish cultural interests.

The University holds a Festival of Contemporary Arts every odd-numbered year, at the Urbana-Champaign campus. The Festival includes art, architecture, landscape architecture, urban planning, drama, motion pictures, literature, printing, photography, dance, and music.

The Krannert Center for the Performing Arts, a \$20 million training and cultural complex which opened in April, 1969, includes four indoor theatres plus an outdoor amphitheatre.

Social Life. Your social activities can be as extensive as your personal inclinations, your purse, and your study schedule dictate. Plays, dances,

movies, concerts, lectures, art exhibits, and sports events provide a variety of opportunities. Some social events will be planned by you and your friends in your housing group, whether you live in a residence hall, organized independent house, cooperative, fraternity, or sorority.

The Illini Union. Community center of the University of Illinois Urbana-Champaign campus, the Illini Union serves the cultural, recreational, and social interests of students, faculty, and staff. Union facilities include food services, guest rooms, entertainment, lounge areas, art galleries, bowling lanes, billiard tables, ballrooms, bookstores, a ticket office, and the University Information and Campus Tour office.

Many all-campus activities are centered in the Illini Union Student Activities Program. The Illini Union sponsors a wide variety of clubs, events, and observances. In Illini Union committees, for example, you may help plan such traditional collegiate events as Homecoming, Dad's Day, and Campus Mother's Day — all of which originated at Illinois.

Fraternities and Sororities. Information on fraternities and registration forms for rush week are sent to each man within three weeks after receiving his permit to enter. University housing is available for those who take part in formal rush but do not pledge. Scholastically eligible men may take part in informal rushing and pledging throughout the school year by registering at the Interfraternity Council Office, 266 Illini Union. Write the Assistant Dean for Fraternities, 110 Student Services Building, Champaign, Illinois 61820, for more information about fraternities.

Dates for sorority rush and a description of this activity may be obtained from the Assistant Dean for Sororities, 110 Student Services Building, Champaign, Illinois 61820.

WHERE TO GO FOR ADVICE

The University of Illinois has able and interested advisers available to every student.

Advice About Academic Affairs. Your instructors, the academic adviser to whom you are assigned at the beginning of the semester, and the associate and assistant deans of your college are specialists in academic counseling, ready to give encouragement and assistance in helping you meet problems arising out of your classroom experiences, your school program, or related areas.

Advice About Student Life. The Dean of Students is in charge of most matters of student welfare and activities. As part of his organization, the Dean of Student Programs and Services, the Dean of Student Personnel, the Director of Housing, and their assistants are general advisers to whom

students may turn for assistance and advice. These advisers help with problems arising from campus life, including how to locate suitable housing, how to find part-time employment, how to budget expenses. They answer questions about student activities, fraternity and sorority pledging, and interpretation of University rules. Any student or prospective student may go to them, and inquiries from parents and guardians are welcomed.

Advice About Study Habits, Personal Adjustment, and Careers. The Student Counseling Service offers high-level professional counseling and scientific aptitude testing. Individual counseling is available on a voluntary basis for all present or prospective students. Through these services, you can gain information about your abilities, interests, and personality which will help you make a wise choice of course of study and, later, of vocation. During your University years, the Student Counseling Service offers help with reading skills, study habits, and any personal or psychological problems which might interfere with a happy and successful University career.

Advice About Admission, Fees, Adjustment of Credits, and Transcripts. The staff of the Office of Admissions and Records welcomes your questions on these subjects.

Advice About Scholarships and Other Financial Aids. The Office of Student Financial Aids is prepared to give you information about types and requirements for scholarships, loans, grants-in-aid, and student employment.

Advice About Selective Service, Veterans' Affairs, and Faculty Deferments. See the staff of the Office of the Dean of Students.

Approximately 4,600 bicycles are registered annually.



LIBRARY FACILITIES

The University Library at the Urbana-Champaign campus, with a collection of more than 4.25 million volumes, is an outstanding facility for use by students. In addition, thirty-five departmental libraries are available across the campus, and the new Undergraduate Library opened in June, 1969. A library policy allows students, who show current identification cards, to borrow materials from the libraries at the University's other two campuses, Chicago Circle and the Medical Center, Chicago.

MILITARY TRAINING

The University of Illinois, a "land-grant" institution, offers military training in Army R.O.T.C., Naval R.O.T.C., and Air Force R.O.T.C. programs on a voluntary basis at the Urbana-Champaign campus. Through such training, students may qualify for commissions in any of the three services. Entering male students are sent additional information with their permit to enter.

HEALTH SERVICES

Staffed by skilled physicians, nurses, and technicians, the University Health Service, Urbana-Champaign campus, provides a professional clinical service where students may come with their physical and mental health problems. Health Service physicians provide office or hospital treatment for students. The Mental Health Division of the Health Service has a staff of seven full-time professional workers, including four psychiatrists. A student may consult with them on any type of personal problem with full assurance that it will be held in confidence. The Health Service staff also operates McKinley Hospital, and teaches courses in health science.

McKinley Memorial Hospital, where students and faculty are served, is a well-equipped modern plant which provides for the care of communicable disease and general illness. The student may choose either a Health Service physician or a community physician for his hospital care. Urbana-Champaign is served by four additional modern hospitals.

Hospital-Medical-Surgical Insurance is required for all students. It is included in the fees paid at the time of registration. In addition to insurance, the Hospital-Medical-Surgical Fee provides hospital services at McKinley Hospital without additional charge other than for personal convenience items. If you can present evidence that you already carry health insurance equal in benefits to those obtained through the University, you will be refunded the cost of your University insurance policy. A signed waiver and assumption of responsibility is required.

Major Regulations Applying to New Students

PHYSICAL EDUCATION

All students — except the physically handicapped — entering the University as freshmen or sophomores must take enough physical education to earn four semesters of credit. (This means you will probably take physical education during each of your first four semesters in the University; transfer students may apply credit received for physical education courses taken at their previous colleges toward the requirement.) Transfer students entering with sixty or more semester hours are exempt from the physical education requirement.

AUTOMOBILES, MOTORCYCLES, AND BICYCLES

The University restricts the use of motor vehicles by all undergraduates at Urbana-Champaign. Students, regardless of their age, who are eligible to have automobiles, must register them with the University and pay a nonrefundable fee of \$5.00 annually. Unmarried freshmen under twenty-one years of age are not allowed to register to drive an automobile while under jurisdiction of the University of Illinois, except in cases of demonstrated need. For more information, write the University Motor Vehicle Division, 101 North Mathews Avenue, Urbana, Illinois 61801.

All University students who use bicycles in the campus community are required to register their bicycles with the Motor Vehicle Division, and to mount the permit they receive on their bicycle. Re-registration is required each year. There is no registration fee.

Motor bikes, scooters, and cycles owned by students and staff must be registered. The registration fee is \$3.00 per year. Additional information may be obtained from the Motor Vehicle Division.

To the Future Student

When you have finished reading this booklet, you may have questions about various aspects of student life and learning at the University of Illinois at Urbana-Champaign. If you do:

PLEASE FEEL FREE TO WRITE

If you have special problems or unanswered questions, write to the Director of Admissions and Records, Dean of Students, dean of the college of your choice, or to the other appropriate person among the University offices listed inside the back cover of this booklet.

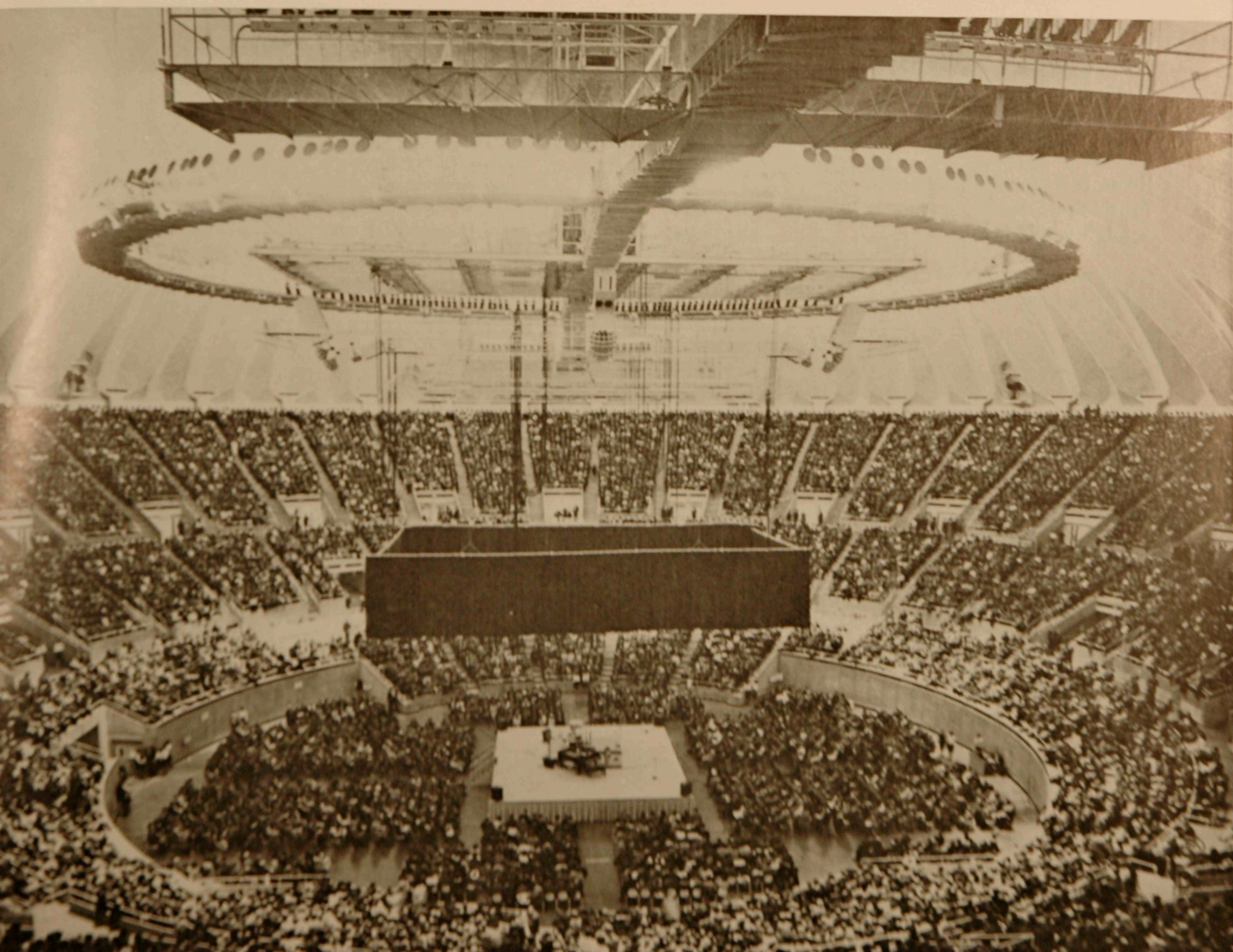
COME TO VISIT

If you come to visit Urbana-Champaign during the months before you enter, the University's regular office hours are from 8:00 a.m. until 12:00 noon and from 1:00 to 5:00 p.m. Monday through Friday, excepting major holidays. Certain campus facilities, including the offices of the Chancellor, the Dean of Students, Student Financial Aids, Foreign Student Affairs, Housing, Student Personnel, the Placement Service, and Student Programs and Services are open during the noon hour. The Illini Union remains open weekends.

TOUR THE CAMPUS

Arrangements can be made for group or individual tours of the campus either by bus, by automobile, or on foot. Write or telephone the Campus Tour Office, 115 Illini Union, Urbana, Illinois 61801; telephone 217-333-3668. Such arrangements should be made as far in advance as possible to assure the availability of tour guides. Maps for self-guided tours, including information on campus points of interest, are available.

Capacity crowd watches theatre in the round at the Assembly Hall.



Admissions Chart

REQUIREMENTS FOR ADMISSION TO THE VARIOUS UNDERGRADUATE CURRICULA

Please consult the Undergraduate Study catalog for definitions and explanations of subject requirements for admission.

(Admission quotas have been established for all curricula.)

Colleges and Curricula at Urbana-Champaign	Minimum		Special Requirements	Subject Pattern Required (See page 40.)
	High School Rank (Freshmen only)	Transfer Average		
COLLEGE OF AGRICULTURE¹ Agricultural Science Preveterinary Medicine	Residents: Upper 1/2 Nonresidents: Upper 1/4	3.5		Pattern I
Agricultural Communications Agricultural Industries Core Curriculum ² with majors in: Agricultural Economics (specify option) Agricultural Mechanization Agronomy Animal Science Dairy Science General Agriculture Horticulture Dairy Technology Food Science Forest Science Home Economics Ornamental Horticulture Restaurant Management Wood Science	Nonresidents: Upper 1/4	3.25		
Home Economics Education ³ Teaching of Agricultural Occupations (high school level) ³			3.5 after 60 semester hours	
Combined Agricultural Science-Agricultural Engineering (five-year program) ⁴	Residents: Upper 1/2 Nonresidents: Upper 1/4	3.5		Pattern V ⁵

¹ One unit of physics, one unit of chemistry, or two and one-half units of mathematics are required for admission to the beginning college chemistry course required in all curricula in Agriculture.

² Transfer applicants with forty-five or more semester hours also should indicate their desired major.

³ Continuation in this program beyond the sophomore year requires admission to advanced standing in teacher education.

⁴ The first three years are taken in the College of Agriculture, the fourth year in either the College of Agriculture or the College of Engineering, and the fifth year in the College of Engineering.

⁵ Students admitted with foreign language deficiency under "Special Admissions" provision must remove the deficiency within the first two years without credit toward college graduation.

INSTITUTE OF AVIATION (Two-year terminal curricula) ¹ Aircraft Maintenance Aviation Electronics Professional Pilot	Nonresidents: Upper 1/4	3.25	Personal interview Special aptitude test	Pattern I
--------------------------------------------------------------------------------------------------------------------------------------------------	----------------------------	------	---------------------------------------------	-----------

Colleges and Curricula at Urbana-Champaign	Minimum		Special Requirements	Subject Pattern Required
	High School Rank (Freshmen only)	Transfer Average		
Combined Flight-Maintenance Program	Nonresidents: Upper ¼	3.25	Enter Aircraft Maintenance	Pattern I

¹ Special physical examination required for all flight students.

COLLEGE OF COMMERCE AND BUSINESS ADMINISTRATION	Nonresidents: Upper ¼	3.25		Pattern IV ¹
Accountancy Economics Finance Industrial Administration Marketing				
Teaching Economics and Business Subjects ²		3.5	See footnote 3 below	

¹ Students admitted with deficiencies under "Special Admissions" provision must remove the deficiencies within the first year.

² Continuation in this curriculum beyond the sophomore year requires admission to advanced standing in teacher education. This program is currently being revised. Anyone interested in pursuing it should contact the office of the Dean of the College of Commerce and Business Administration.

³ Students who plan to teach shorthand and typing must present college credit in these areas from another institution.

COLLEGE OF COMMUNICATIONS				
Advertising News-Editorial Radio-Television		3.5	56 semester hours, exclud- ing military and physical education A reasonable degree of typing ability	
COLLEGE OF EDUCATION				
Elementary School Teaching ¹ Specialty for Elementary School Librarians General Option Early Childhood Education ¹	Nonresidents: Upper ¼	3.5 (In some cases, ap- plicants with aver- ages between 3.3 and 3.5 may petition for ad- mission on probation.)		Pattern III
High School Teaching ¹			Junior standing	Pattern II
Teaching of Deaf and Hard-of-Hearing Children ¹ Teaching of Mentally Handicapped Children ¹	Residents and Nonresidents: Upper ¼		Personal interview	
Technical Education Specialties ¹ (Industrial Education)	Nonresidents: Upper ¼	3.25	3.5 after 30 semester hours	

¹ Continuation in this curriculum beyond the sophomore year requires admission to advanced standing in teacher education.

Colleges and Curricula at Urbana-Champaign	Minimum		Special Requirements	Subject Pattern Required
	High School Rank (Freshmen only)	Transfer Average		
COLLEGE OF ENGINEERING Aeronautical and Astronautical Engineering Agricultural Engineering Ceramic Engineering Civil Engineering Electrical Engineering Engineering Mechanics General Engineering Industrial Engineering Mechanical Engineering Metallurgical Engineering	Nonresidents: Upper ¼	3.25		Pattern V ¹
Engineering Physics			See footnote 2 below	
Teaching of Engineering Technology ³ Electrical Technology Mechanical Technology		3.5 (3.3 to 3.5 may petition)		Pattern II
Post-Baccalaureate Certificate Program in the Teaching of Engineering Technology Electrical Technology-Electronics Mechanical Technology (See Undergraduate Study catalog)			Baccalaureate degree from an accredited institution Two years of pertinent in- dustrial expe- rience Two years of experience teaching technical courses in the respec- tive subject matter special field	One year of college physics Completion of integral calculus
Combined Engineering-Liberal Arts and Sciences (five-year program) (Specify curriculum)	Nonresidents: Upper ¼	3.5	See footnote 4 below (Must satisfy both Engi- neering and Liberal Arts and Sciences requirements)	Pattern V
Combined Agricultural Science-Agricultural Engineering (five-year program)	See Agriculture			

¹ Students admitted with foreign language deficiency under "Special Admissions" provision must remove the deficiency within the first two years without credit toward college graduation.

² A minimum average of 3.5 in all subjects, exclusive of basic military and physical education, and a combined average of 3.5 in all courses in mathematics and physics are required for registration in advanced undergraduate physics courses.

³ Continuation in this curriculum beyond the sophomore year requires admission to advanced standing in teacher education.

⁴ The first, fourth, and fifth years are taken in the College of Engineering; the second and third years are taken in the College of Liberal Arts and Sciences. In general, transfer students with more than seventy-five semester hours of credit are ineligible for this program.

Colleges and Curricula at Urbana-Champaign	Minimum		Special Requirements	Subject Pattern Required
	High School Rank (Freshmen only)	Transfer Average		
COLLEGE OF FINE AND APPLIED ARTS Architectural Studies ¹ Architecture (general and engineering options) ²	Residents: Upper 1/2 Nonresidents: Upper 1/4	3.25	3.25 for transfers from other departments in the University	Pattern V
Urban Planning	Nonresidents: Upper 1/4			Pattern III
Landscape Architecture				Pattern II
Dance				
Teaching of Dance ³			3.5 after 60 semester hours	
Art Curricula ⁴ Crafts Graphic Design History of Art Industrial Design Medical Art (five-year program) ⁵ Painting Sculpture			3.25 for transfers from other depart- ments in the University and for continua- tion in art courses at the junior level ⁶ Transfers must present portfolios of previous art work	Pattern III
Art Education ^{3, 4}			3.5 after 60 semester hours	
Theatre Curricula Theatre: Acting Theatre: Directing and Playwriting Bases Theatre: Technology and Design				
Music, with majors in: History of Music Instrumental Music Music Composition Voice			Music qualifying audition	
Music Education (vocal-choral or instrumental emphasis) ³			Music qualifying audition 3.5 after 60 semester hours	
Early Admission Program in Music ⁷	See Undergraduate Study catalog			

¹ New four-year program for freshman students beginning in September, 1969, and thereafter.

² Five-year program for students who began an architectural program before September, 1969.

³ Continuation in this curriculum beyond the sophomore year requires admission to advanced standing in teacher education.

⁴ Effective for the fall term, 1969, all applicants for admission to curricula in art, except History of Art, must present a qualifying portfolio of art work.

⁵ The first three years are taken at Urbana-Champaign; the last two years are taken at the Medical Center, Chicago.

⁶ Cumulative averages for this purpose are computed by using grades for: (1) all University of Illinois courses; or (2) the combination of University of Illinois and transfer courses. The lowest average in (1) or (2) governs.

⁷ Applicants should rank in upper quarter and show evidence of academic maturity and musical talent.

Colleges and Curricula at Urbana-Champaign	Minimum		Special Requirements	Subject Pattern Required
	High School Rank (Freshmen only)	Transfer Average		
COLLEGE OF LAW (New students may enter only in September)		3.5 or ap- proval of petition	Law School Ad- mission Test Bachelor's de- gree from an accredited four-year college or university, ex- cept by special action of the Admissions Committee of the College of Law	
COLLEGE OF LIBERAL ARTS AND SCIENCES Sciences and Letters Curriculum (including preprofessional preparation for Communications, Law, and Medicine) General (two-year program for freshmen and sophomores uncommitted to a departmental major)	Nonresidents: Upper ¼	3.25		Pattern III
Secondary Teacher Education Curricula in Biological Sciences and General Science, Chemistry, Earth Science, English, Geography, Mathematics, Physics, Social Studies, Speech ¹ Speech Correction (teacher education) ¹ Teacher Education Curricula in Foreign Languages for both high school and elementary school teaching (French, German, Latin, Russian, Spanish) ¹			3.5 after 60 semester hours	
Occupational Therapy	Residents: Upper ½ Nonresidents: Upper ¼		See Under- graduate Study catalog	
Medical Technology Medical Record Administration	Nonresidents: Upper ¼			
Preprofessional Nursing	Residents: Upper ½ Nonresidents: Upper ¼	3.5		
Prepharmacy	Nonresidents: Upper ¼	3.25		
Chemistry Chemical Engineering			3.5 (for juniors and seniors)	Pattern V

Colleges and Curricula at Urbana-Champaign	Minimum		Special Requirements	Subject Pattern Required
	High School Rank (Freshmen only)	Transfer Average		
Physics	Residents: Upper 1/2 Nonresidents: Upper 1/4		See footnote 2 below	
Combined Engineering-Liberal Arts and Sciences (five-year program)	See Engineering			

¹ Continuation in these curricula beyond the sophomore year requires admission to advanced standing in teacher education.

² A minimum average of 3.5 in all subjects, exclusive of basic military and physical education, and a combined average of 3.5 in all courses in physics and mathematics are required for registration in advanced undergraduate mathematics and physics courses.

COLLEGE OF PHYSICAL EDUCATION				
Recreation (options in general recreation, park administration, outdoor recreation, and therapeutic recreation)	Nonresidents: Upper 1/4	3.25		Pattern II
Health and Safety Education ¹ (options in school health education, school safety education, community health education, and public safety education) Physical Education for Men ² Physical Education for Women ²			3.5 after 60 semester hours	

¹ For those who plan to teach (school health education or school safety education option), continuation in this curriculum beyond the sophomore year requires admission to advanced standing in teacher education.

² Continuation in this curriculum beyond the sophomore year requires admission to advanced standing in teacher education.

COLLEGE OF VETERINARY MEDICINE				
(New students may enter only in September)		3.5	Personal inter- view and test scores when requested 60 semester hours of acceptable credit, exclu- sive of military and physical education	

Requirements for Admission

Except as indicated under Exemptions and Substitutions on page 42, each new applicant for admission to the University at Urbana-Champaign as a freshman or transfer must present a minimum of fifteen units of acceptable credits and must satisfy the academic subject requirements listed in one of the five following patterns, as prescribed for the college and curriculum of his choice. Consult the admissions chart on pages 34 to 39.

<i>Subjects</i>	<i>Minimum Number of Units</i>
Pattern I	
English	3
Mathematics: ¹	
Algebra	1
Plane Geometry	1
One or more units in <i>at least three</i> of the following: one additional unit in English, two units in one foreign language, science (not general science), social studies, additional mathematics (beyond algebra and plane geometry)	5
<i>Total</i>	10
Pattern II	
English	3
Mathematics: ¹	
Algebra	1
Plane Geometry	1
One or more units in <i>at least three</i> of the following: two units in one foreign language, science (not general science), social studies, additional mathematics (beyond algebra and plane geometry)	7
<i>Total</i>	12
Pattern III	
English	3
Mathematics: ¹	
Algebra	1
Plane Geometry	1
One foreign language	2
One or more units in <i>at least two</i> of the following: additional foreign language, science (not general science), social studies, additional mathematics (beyond algebra and plane geometry)	5
<i>Total</i>	12

¹ The mathematics requirement in each of the admission patterns may be satisfied by the prescribed courses or the corresponding number of units in college preparatory mathematics.

Pattern IV	
English.....	3
Mathematics: ¹	
Algebra.....	2
Plane Geometry.....	1
One foreign language.....	2
Science (not general science).....	2
Social Studies.....	2
<i>Total</i>	<u>12</u>

Pattern V	
English.....	3
Mathematics: ¹	
Algebra.....	2
Plane Geometry.....	1
Trigonometry.....	½
One foreign language.....	2
One or more units in each of the following: science (not general science), social studies.....	4
<i>Total</i>	<u>12½</u>

¹ The mathematics requirement in each of the admission patterns may be satisfied by the prescribed courses or the corresponding number of units in college preparatory mathematics.

Many students use the departmental libraries for study.



Special Requirements for Admission

All colleges of the University have established certain minimum specific subject requirements for admission to the various undergraduate curricula which are considered essential preparation for successful study in the chosen field. The admissions chart on pages 34 to 39 shows the subject pattern which has been prescribed for admission to each.

EXEMPTIONS AND SUBSTITUTIONS

1. *Applicants with Less than Thirty Semester Hours.* No exemptions are permitted or substitutes accepted for the high school subjects prescribed by the University or for the requirements of high school graduation, except as provided for under "Special Admissions" described below, and as provided through entrance examinations, General Educational Development Tests, and American College Tests.

2. *Transfers with Thirty or More Semester Hours.* The requirements of high school graduation and specific high school entrance subjects (except when necessary as prerequisites for required courses to be taken here) may be waived for those students listed below who transfer to the University with thirty or more semester hours of credit earned with at least a 3.25 average in all work attempted:

- a. Transfers to the University from fully accredited junior and/or senior colleges;
- b. Transfers from one college to another on the same University of Illinois campus;
- c. Transfers from one campus of the University to another.

All other requirements established for admission as a transfer to the curriculum of the student's choice must be met. Some colleges have established minimum average requirements higher than 3.25 for admission to certain curricula. (See also provision for special admissions below.)

High school entrance requirements are not waived for transfers to the College of Commerce and Business Administration, to the College of Engineering, or to the College of Fine and Applied Arts, unless the transfer students have demonstrated proficiency in the areas in which they are deficient.

SPECIAL ADMISSIONS

A student not otherwise eligible for admission may be admitted, with the approval of the Director of Admissions and Records and the dean of the college he wishes to enter, providing he submits evidence which clearly establishes his qualifications to do satisfactory work in the curriculum or course in which he wishes to enroll.

Where to Write for Information

For information about the University of Illinois, write to the dean of the college which you plan to enter or to the appropriate officer at the addresses listed below.
For University addresses in Urbana, use zip code 61801; in Champaign, 61820; in Savoy, 61874.

- DIRECTOR OF ADMISSIONS AND RECORDS
100a Administration Building, Urbana
- DEAN OF COLLEGE OF AGRICULTURE
104 Mumford Hall, Urbana
- PROFESSOR OF AIR FORCE
AEROSPACE STUDIES
232 Armory, Champaign
- DIRECTOR OF INSTITUTE OF AVIATION
University of Illinois—Willard Airport,
Savoy
- CAMPUS TOUR OFFICE
115 Illini Union (North Lobby), Urbana
- DEAN OF COLLEGE OF COMMERCE AND
BUSINESS ADMINISTRATION
214 David Kinley Hall, Urbana
- DEAN OF COLLEGE OF COMMUNICATIONS
119 Gregory Hall, Urbana
- DEAN OF COLLEGE OF EDUCATION
120 Education Building, Urbana
- DEAN OF COLLEGE OF ENGINEERING
101 Engineering Hall, Urbana
- DEAN OF DIVISION OF UNIVERSITY
EXTENSION
118 Illini Hall, Champaign
- DEAN OF COLLEGE OF FINE AND
APPLIED ARTS
110 Architecture Building, Champaign
- DIRECTOR OF INSTITUTE OF
GOVERNMENT AND PUBLIC AFFAIRS
1201 West Nevada Street, Urbana
- DEAN OF GRADUATE COLLEGE
330 Administration Building, Urbana
- DIRECTOR OF HEALTH SERVICES
278 Health Center, Urbana
- DIRECTOR OF HOUSING
420 Student Services Building, Champaign
- DIRECTOR OF INSTITUTE OF LABOR AND
INDUSTRIAL RELATIONS
249 Labor and Industrial Relations Building,
Champaign
- DEAN OF COLLEGE OF LAW
209 Law Building, Champaign
- DEAN OF COLLEGE OF LIBERAL ARTS
AND SCIENCES
294 Lincoln Hall, Urbana
- DIRECTOR OF GRADUATE SCHOOL OF
LIBRARY SCIENCE
329 Library, Urbana
- DIRECTOR OF SCHOOL OF LIFE SCIENCES
387 Morrill Hall, Urbana
- PROFESSOR OF MILITARY SCIENCE
111 Armory, Champaign
- DIRECTOR OF SCHOOL OF MUSIC
100 Smith Music Hall, Urbana
- PROFESSOR OF NAVAL SCIENCE
239 Armory, Champaign
- DEAN OF COLLEGE OF PHYSICAL
EDUCATION
107 Huff Gymnasium, Champaign
- DIRECTOR OF DIVISION
OF REHABILITATION-EDUCATION SERVICES
Rehabilitation-Education Center, Champaign
- DIRECTOR OF THE JANE ADDAMS
GRADUATE SCHOOL OF SOCIAL WORK
1207 West Oregon Street, Urbana
- DIRECTOR OF STUDENT COUNSELING
SERVICE
249 Student Services Building, Champaign
- DIRECTOR OF STUDENT FINANCIAL AIDS
Room 109, 707 South Sixth Street, Champaign
- DEAN OF STUDENT PERSONNEL
130 Student Services Building, Champaign
- DEAN OF STUDENT PROGRAMS
AND SERVICES
110 Student Services Building, Champaign
- DEAN OF STUDENTS
310 Student Services Building, Champaign
- DIRECTOR OF UNIVERSITY HONORS
PROGRAMS
1205 West Oregon Street, Urbana
- DEAN OF COLLEGE OF VETERINARY
MEDICINE
135 Veterinary Medicine Building, Urbana