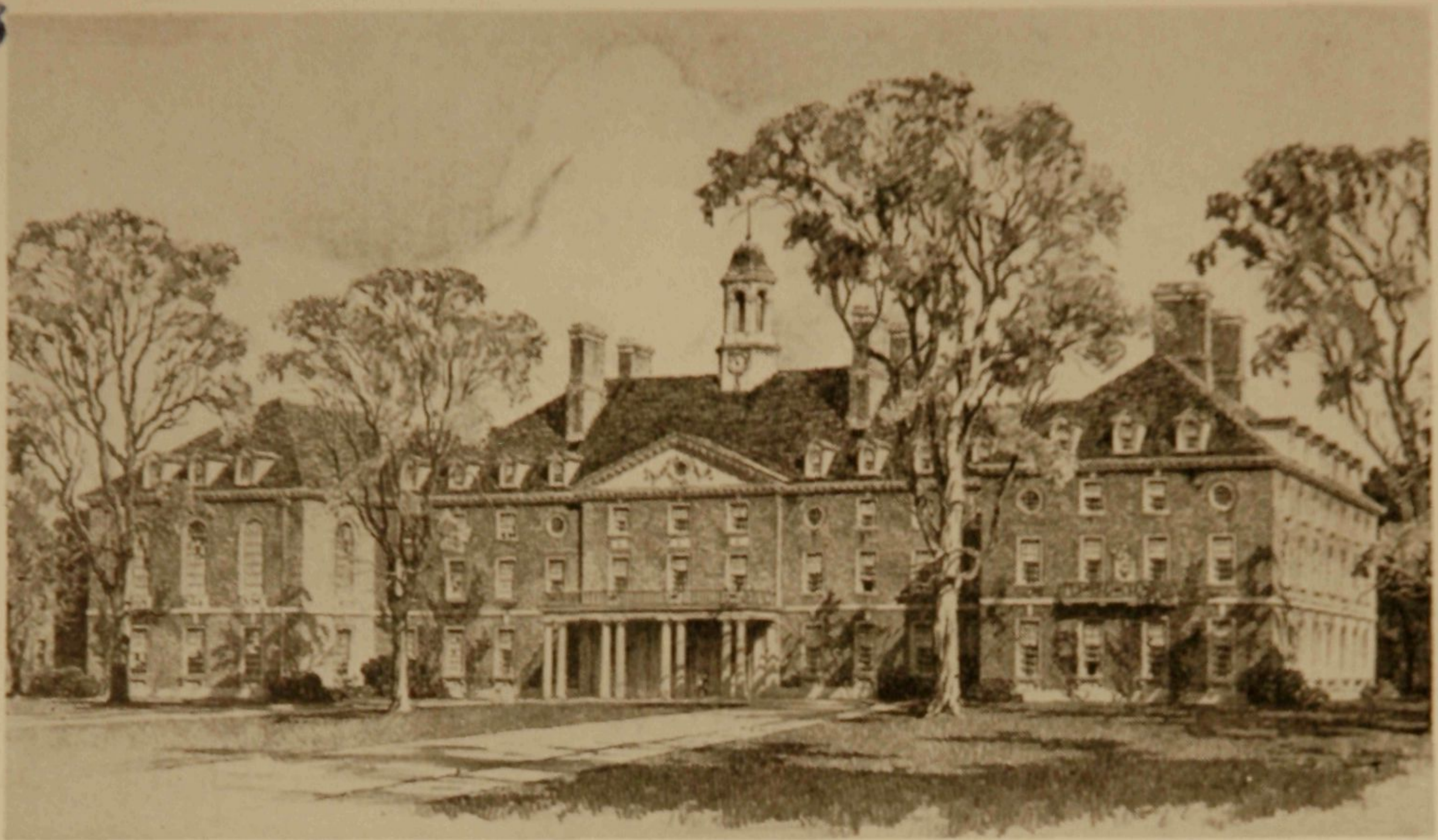


<sup>C</sup>  
Illini Union I  
1941  
~~cop. 3~~



“..... The sole idea has been to provide a distinguished social center for campus life which it is hoped will furnish not only service but real inspiration for better living and a finer University to all who enter its doors.”—President ARTHUR CUTTS WILLARD, February 5, 1941.

# NEW ILLINI UNION

*Summer*

*Program*



# SUMMER SESSION HOURS ILLINI UNION BUILDING

## DAILY (Monday through Friday)

	Opening Time	Closing Time
General Building.....	7:00 a.m.	*11:00 p.m.
Browsing Room.....	10:00 a.m.	10:00 p.m.
Bowling Alleys.....	9:00 a.m.	*11:00 p.m.
Commons:		
Breakfast.....	7:30 a.m.	8:30 a.m.
Luncheon.....	12:00 noon	1:00 p.m.
Dinner.....	5:30 p.m.	6:30 p.m.
Colonial Room:		
Luncheon.....	12:00 noon	1:00 p.m.
Dinner.....	6:00 p.m.	7:00 p.m.
Tavern.....	8:30 a.m.	*11:00 p.m.

## SATURDAY

General Building.....	7:00 a.m.	1:00 a.m.
Browsing Room.....	10:00 a.m.	10:00 p.m.
Bowling Alleys.....	9:00 a.m.	12:00 p.m.
Commons:		
Breakfast.....	7:30 a.m.	8:30 a.m.
Luncheon.....	12:00 noon	1:00 p.m.
Dinner.....	5:30 p.m.	6:30 p.m.
Colonial Room:		
Luncheon.....	12:00 noon	1:00 p.m.
Dinner.....	6:00 p.m.	7:00 p.m.
Tavern.....	8:30 a.m.	12:30 a.m.

## SUNDAY

General Building.....	8:00 a.m.	11:00 p.m.
Browsing Room.....	1:00 p.m.	10:00 p.m.
Bowling Alleys.....	1:00 p.m.	11:00 p.m.
Commons:		
Breakfast.....	(Breakfast served in Tavern)	
Luncheon.....	12:30 p.m.	1:30 p.m.
Dinner.....	5:30 p.m.	6:30 p.m.
Colonial Room:		
Luncheon.....	12:30 p.m.	1:30 p.m.
Dinner.....	5:30 p.m.	6:30 p.m.
Tavern.....	8:30 a.m.	11:00 p.m.

\*On Friday nights, the general building closes at 1:00 a.m., the bowling alleys at 12:00 p.m. and the Tavern at 12:30 a.m.

THE ILLINI UNION BUILDING, since it opened last February, has become the general meeting place for all students, faculty, and alumni of the University of Illinois. In the attractive surroundings of this social center, we feel sure that you will spend many pleasant hours during the next few months and hope that you will make full use of its many facilities.

The Illini Union Building is operated by the University on a non-profit basis. All students in the summer session pay a service charge of \$2.50 which entitles them to full use of the building during that period. (Students during the winter session pay a service charge of \$5.00 per semester.)

There are complete facilities in the building for a wide variety of student activities. Here you will find meeting rooms, a music room, browsing room, and many lounges which provide an excellent place to meet your friends, make new acquaintances, or spend a few idle moments for study and relaxation. There is a main dining room, cafeteria, and soda fountain, as well as many private dining and banquet rooms capable of serving groups ranging from 10 to 600. The cafeteria serves three meals daily and features student specials at each of these meals, thus offering an opportunity to the students to accurately budget their food requirements. There are also eight bowling alleys, six ping-pong tables, and many card tables with equipment for ping-pong, cards, chess and checkers available at the Main Desk. *All the lounges, ballroom, bowling alleys, and dining rooms are air-conditioned.*

A broad social, cultural, and recreational program is conducted under the general supervision of the social director, assisted by students. Included in these activities are music hours, dances, teas, coffee hours, forums, and many recreational activities such as bowling tournaments, chess and checker tournaments, and bridge tournaments. All students of the summer session are urged to participate in these activities; and those interested should apply at the Main Desk of the building.

## DANCES

**Registration Dance**—The Registration Dance will be Monday, June 16, in the Illini Union Ballroom. Open to all students, with dancing from 9 p.m. to 12 p.m. Admission—Men 20 cents, women 15 cents.

**"Get-Acquainted" Mixers**—Every Saturday night there will be a mixer dance in the air-conditioned Illini Union Ballroom. Dancing will be from 9 p.m. to 12 p.m. These dances, featuring popular orchestras, are open to all students—Men 20 cents, and women 15 cents.

**Friday Night Dances (Couples Only)**—Every Friday night there will be a dance in the Illini Union Ballroom limited to *couples only*. Good music—50 cents per couple. Dancing from 9 p.m. to 12 p.m. Tickets for these dances are on sale in advance at the Main Desk of the Illini Union.

**Summer Prom**—The Summer Prom will be held July 26 in the Illini Union Ballroom. Details will be given later, but it will be formal and there will be a nationally-known orchestra, so make your arrangements early.

**SOCIAL DANCING CLASSES.** Mixed Social Dancing Classes under the direction of the Summer Recreational Committee every Wednesday in the Illini Union Ballroom. Free instruction will be offered by a physical education instructor.

**HEADQUARTERS!** The Main Desk of the Illini Union Building will be open during the Summer Session. Tickets and information concerning the social information service, will be available at the Main Desk. Men and women during the summer must sign up at the Main Desk. Results of a

## MUSIC HOURS

Programs of the world's finest recorded music are held every day in the General Lounge on the second floor. Selections on these programs are provided from a library of over 650 records and are played on the Carnegie Music Set which was presented to the Illini Union Building by the Carnegie Corporation of New York. *All summer-session students who wish to work on the Music Hour Committee should immediately contact the office of the Social Director, Room 129. Positions will be open for work on the Program, Operating, and Publicity committees.* Programs are made up from written requests from any student. The requests may be left at the Main Desk, specifying selection and time to be played.

Music Hours are presented daily as follows:

Monday through Friday—

12:30 p.m. to 1:00 p.m.

6:30 p.m. to 7:30 p.m.

\* Saturday and Sunday—

6:30 p.m. to 7:30 p.m.

ing Classes open to both men and women will be given under  
Wednesday evening from 7:00 p.m. to 8:00 p.m. in the Illini  
ical education dance instructor.

Building will be the general headquarters for the campus  
erning all summer entertainment events as well as a general  
men and women desiring to enter any tournament conducted  
of all matches must be reported at this same location.

## BOWLING

Eight air-conditioned bowling alleys are open daily from 9 a.m. to 11 p.m., Saturdays from 9 a.m. to 12 p.m., and Sundays from 1 p.m. to 11 p.m. Bowling is 15 cents a line. Starting on June 23, there will be a league open to both men and women, and all players interested in participating should sign up either at the desk in the bowling alleys or at the Main Desk of the building by June 21. No entry fee—prizes will be awarded to all winners. If there are enough women bowlers interested, there will be a separate league for women.

## COFFEE HOURS

A faculty-student coffee hour for men and women every Wednesday starting June 25, from 3:00 p.m. to 4:30 p.m., in the Pine Lounge on the first floor. Everyone is welcome, and there is no charge. We suggest that you go to these coffee hours, as they provide an excellent opportunity to meet many students and faculty members, and to make new friends.

## CO-OPERATIVE BOOKSTORE

The Illini Union Bookstore is operated in conjunction with the new Illini Union and is one of the many service features offered to the students and faculty by the University of Illinois.

This bookstore is a co-operative. Students and faculty who make their book and supply purchases in the Illini Union Bookstore have returned to them in the form of dividends at the end of the fiscal year profits made during that year. Anyone in the bookstore will gladly explain the "how" of this plan to you. Stop in today.

## PING-PONG

Ping-pong tables are available in the air-conditioned Game Room. Paddles are provided without cost at the Main Desk. Players must furnish the balls, or they may be purchased at the Main Desk. From July 14 to July 19, there will be a series of tournaments consisting of men's singles, women's singles, men's doubles, women's doubles, and mixed doubles. There will be no entry fee, but entries must be in by July 7. Prizes will be awarded to the winners. Sign up at the Main Desk.

## CHESS, CHECKERS, PINOCHLE, BRIDGE

Card tables are available in the Game Room or in the Pine Lounge; and additional tables may be secured by making such requests at the Main Desk. All those interested in a chess tournament, checker tournament, pinochle or bridge tournaments, should sign up at the Main Desk. These tournaments will start on July 6, if enough interested players sign up.

## MANAGEMENT OF THE ILLINI UNION BUILDING

VERNON L. KRETSCHMER  
Manager

Mrs. KATHARINE M. ANSLEY  
Food Service Manager

Miss IRENE PIERSON  
Social Director

ERWIN J. SCHREIBER  
Manager of  
Illini Union Bookstore

JOHN HARMAN  
Manager of  
Bowling Alleys